

Product Name:	Ceramic Birdbath
----------------------	------------------

Thank you for purchasing this LuxenHöme product. This product has been manufactured with the highest standards of safety and quality.

PLEASE READ ALL INSTRUCTIONS BEFORE ASSEMBLY.

Please make sure to unpack all the components from the packaging inside the carton to ensure that there are no missing or damaged parts. Do not attempt to assemble or use the product if any parts are missing or damaged.

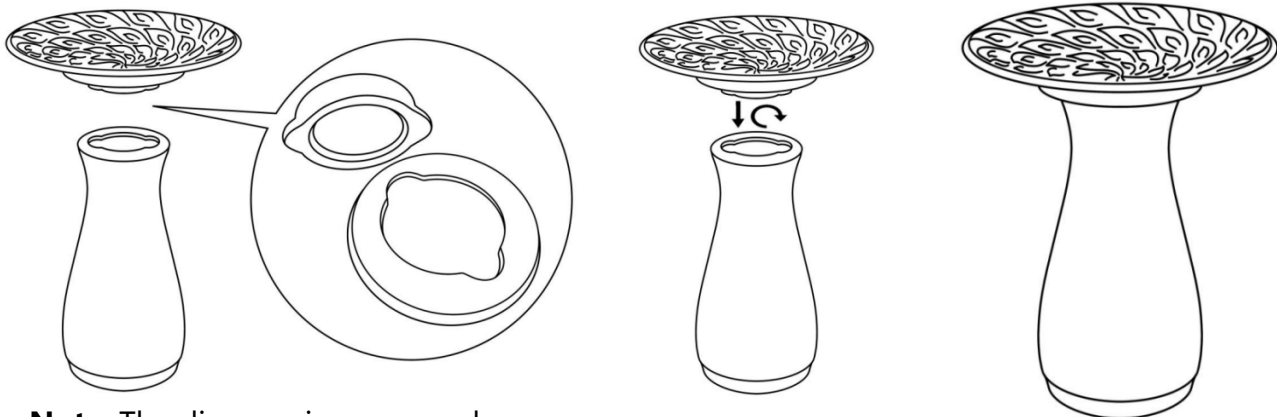
CARTON CONTENTS:

Description	Quantity
Birdbath Basin	1
Birdbath Pedestal	1

Tools required for assembly: No tools are required for assembly.

Assembly Instructions:

1. Select a flat, level surface for your birdbath.
2. Line up the bottom of the basin to the pedestal so the basin sits on the pedestal.
3. Rotate the basin to secure it to the pedestal.



Note: The diagram is an example.

Attention: If installed outdoors and in a freeze-area of the country, ensure that all water is removed and the unit is completely dry.

This product is NOT to be operated below 41°F (5°C) freeze damage may occur.