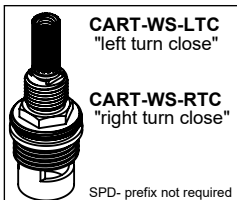
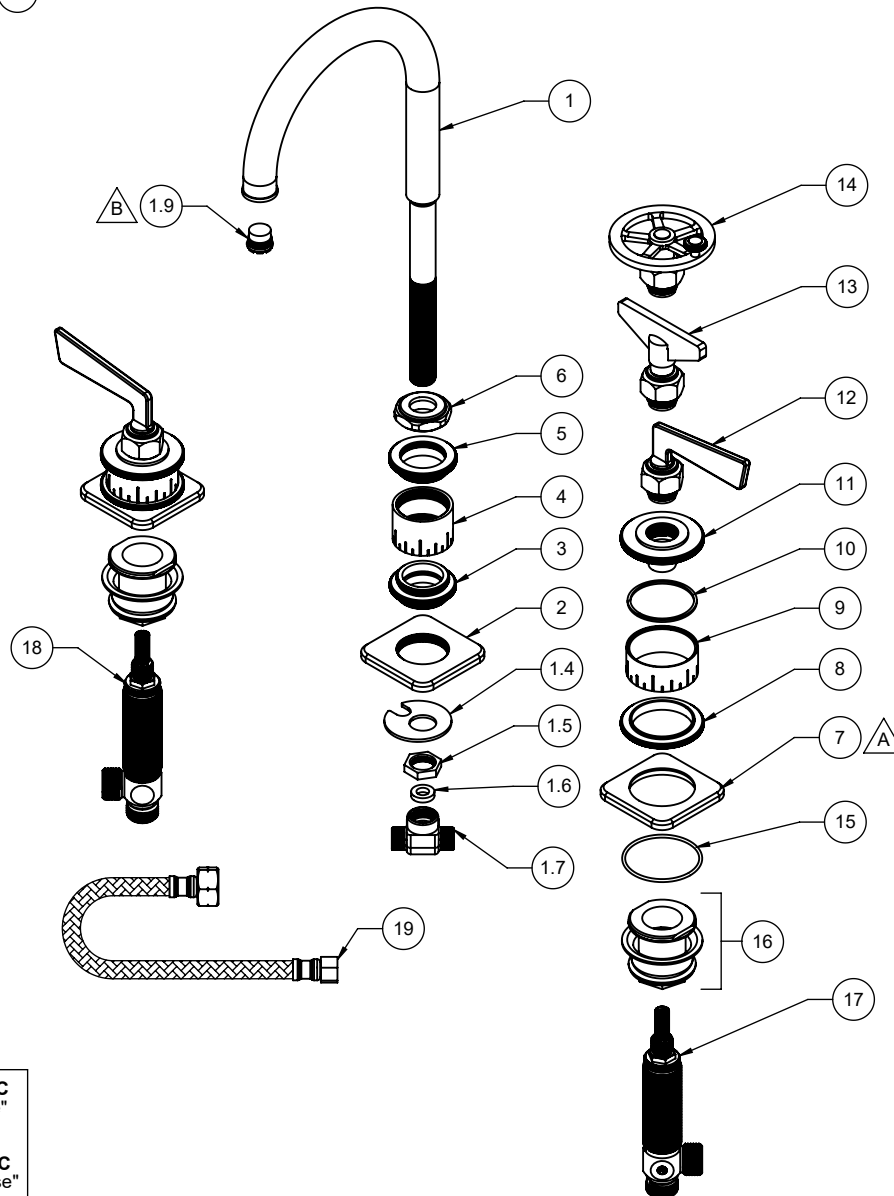


△ REQUIRES ITEM 15

△ REQUIRES ITEM 20



To order spare parts add and/or replace as stated below:

SPD- prefix added to part number(s)

-ZZ replaced with finish code (see finish table)

-WW replaced with **-90** (light finish) or **-96** (dark finish)

Ex: **SPD-7-100463-PC** or **SPD-86030-96**

ITEM	PART NO	DESCRIPTION	QTY.	
1	7-100340-ZZ	ASM, LAV CANE SPOUT INDUST THIN TIP <i>(incl. 1.4, 1.5, 1.6, 1.7, 1.9)</i>	1	
1.4	881766-99	WSHR HORSESHOE	1	
1.5	881276-99	NUT, HEX 3/8"-18 NPSM X .20 HT	1	
1.6	87162-80	WSHR Ø8.5 X Ø15.5 X 3.5MM EPDM A70 (NSF-61-12 & WRAS)	1	
1.7	880083-90	TEE, 3-WAY LAV - SS	1	
1.9	880356-81	INSERT, 1.2 GPM, TT LAMINAR (CACHE)	1	
2	10814-ZZ	RING, SQ ROUNDED SPOUT BASE	1	
3	10815-ZZ	COIN, SPOUT BASE BOTTOM	1	
4	10816-ZZ	BASE, SPOUT W/ HASH	1	
5	10817-ZZ	COIN, SPOUT BASE TOP	1	
6	10818-ZZ	HEX, SPOUT BASE DECORATIVE	1	
7	10820-ZZ	RING, SQ ROUNDED BASE	2	
8	10821-ZZ	COIN, ESCUTCHEON BOTTOM	2	
9	10822-ZZ	ESCUTCHEON, HASHED	2	
10	87254-81	WSHR Ø42.16" X Ø45.87 X 1.57MM ACETAL	2	
11	10823-ZZ	COIN, ESCUTCHEON TOP	2	
for 86 Series	12	7-100322-ZZ	ASM, FLAG INDUSTRIAL LEVER	2
for 86B Series	13	7-100324-ZZ	ASM, KEY INDUSTRIAL LEVER	2
for 86W Series	14	7-100323-ZZ	ASM, WHEEL INDUSTRIAL LEVER	2
15	87263-81	O-RING Ø49 X 2.0 (NA) BUNA-N A70	2	
16	6-200294	KIT, W/S INV NUT - 2 SETS (1 SET - 6-200294-1)	1	
17	6-200087	ASM, COLD-LAV "NL" BODY & CART (.25 Pb)-G4 <i>(incl. CART-WS-LTC)</i>	1	
18	6-200088	ASM, HOT-LAV "NL" BODY, CART (.25 Pb)-G4 <i>(incl. CART-WS-RTC)</i>	1	
19	880099-99	HOSE, POLY BRAIDED, 1/2 IPS X 3/8 CMP X 12 (DN6-SILICONE) (NL, NSF-61-12 & WRAS)	2	
20	223472-99	KEY, TT CACHE AERATOR INSERT	1	