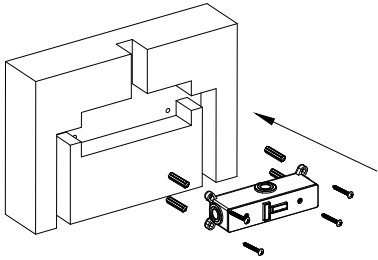


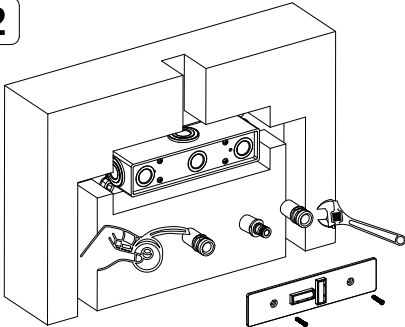
List of standard parts

1



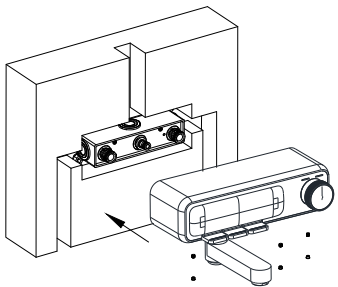
Insert the self-working rubber granules into the hole and fix the reference level of the concealed faucet body with self-working screws to ensure the level. Do not remove the transparent protective cover of the cement wall to avoid the cement splashing on the copper parts (the protection box must be higher than the tile surface).

2



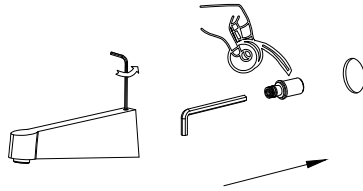
After installing the concealed faucet body, remove the transparent protective cover and install the water inlet connector on the concealed faucet body with a wrench

3



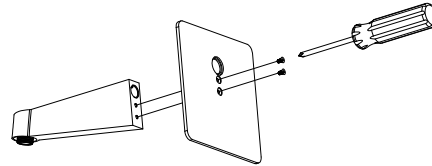
Install the faucet body on the water inlet joint, lock it with hexagonal screws and plug the silicone granule, and the main body of the faucet is installed.

4



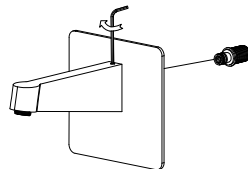
Loosen the hex socket screw to remove the connector and install upper outlet arm connector, wrap the raw material belt around the tail tooth of the connector, and tighten the connector with the sealing belt into the water pipe

5



Lock the two screws behind the decorative plate and the upper outlet arm as shown in the figure

6



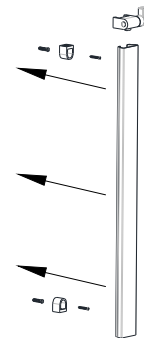
After locking the screws, fasten them into the joint on the wall, and tighten the hex key to complete the installation

7



Remove the plastic cover, plastic holder and screws at both ends of the lifting rod

8



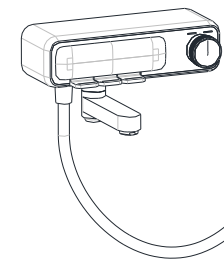
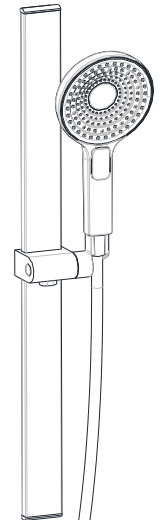
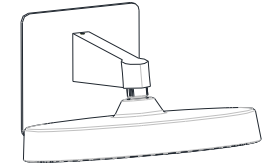
Attach the plastic holder to the wall with self-tapping screws, Put the sleeve on the lifting rod, Then buckle both ends of the lifting rod to the fixed holder

9



Screw the plastic cover to both ends of the lifting rod

List of standard parts



Concealed shower faucet installation completed