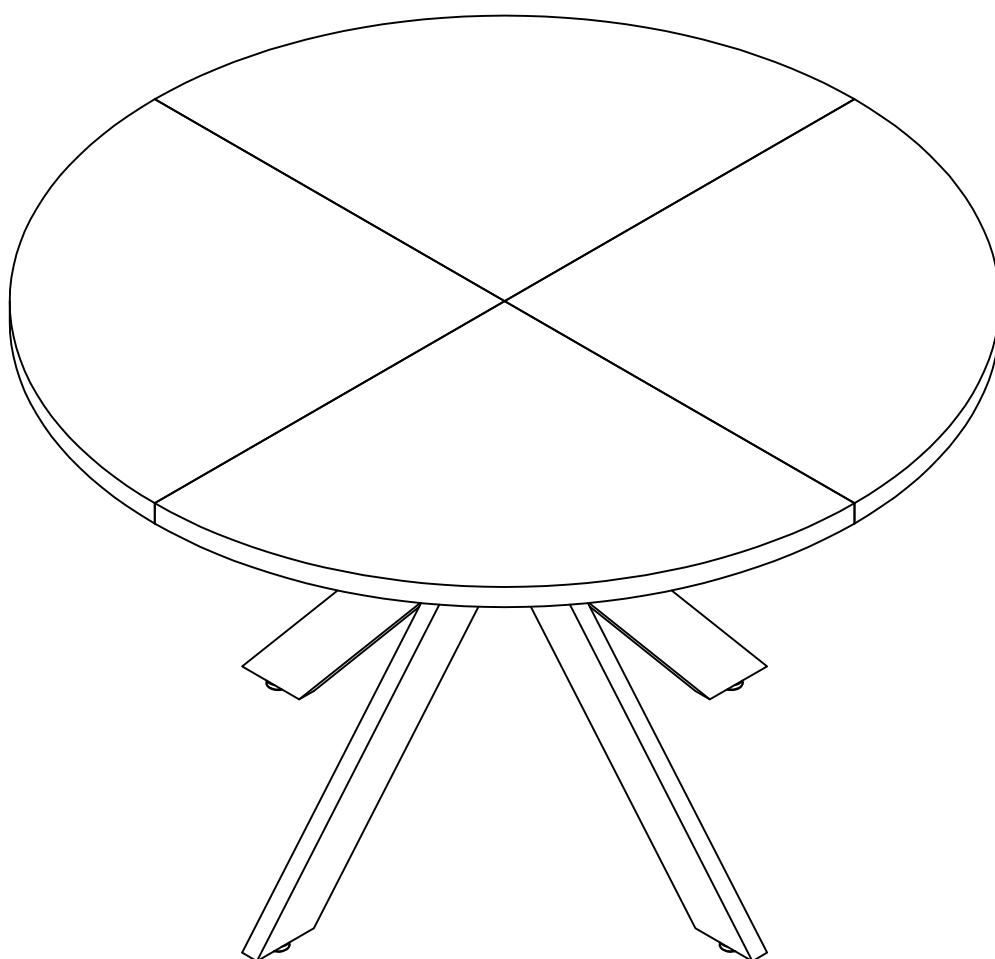


Installation Instruction



Assembling

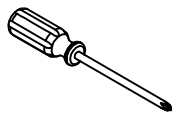
Estimated time for assembly



45 : 00

What you need

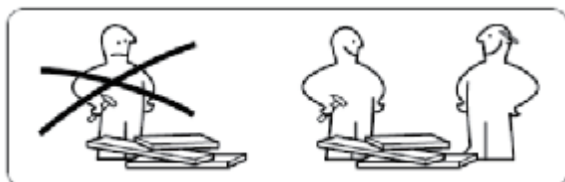
- Use the packaging carton as a working surface to prevent product damage during assembly
- Phillips head screwdriver



Weight Limitation



100 | **35**
lbs table top lbs per

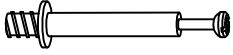


What' included

Code Description	Qty
A Cam Bolt M6X35MM	12
B Cam Lock 15X12MM	12
C Wooden Dowel M10X50MM	16
D Screw M6X28MM	12
E Wrench M4X55MM	1
F Screw M6X10MM	24
G Adjustable Leveler	4

The Hardwares

Ⓐ



Ⓑ



Ⓒ



Ⓓ



Ⓔ



Ⓕ



Ⓖ



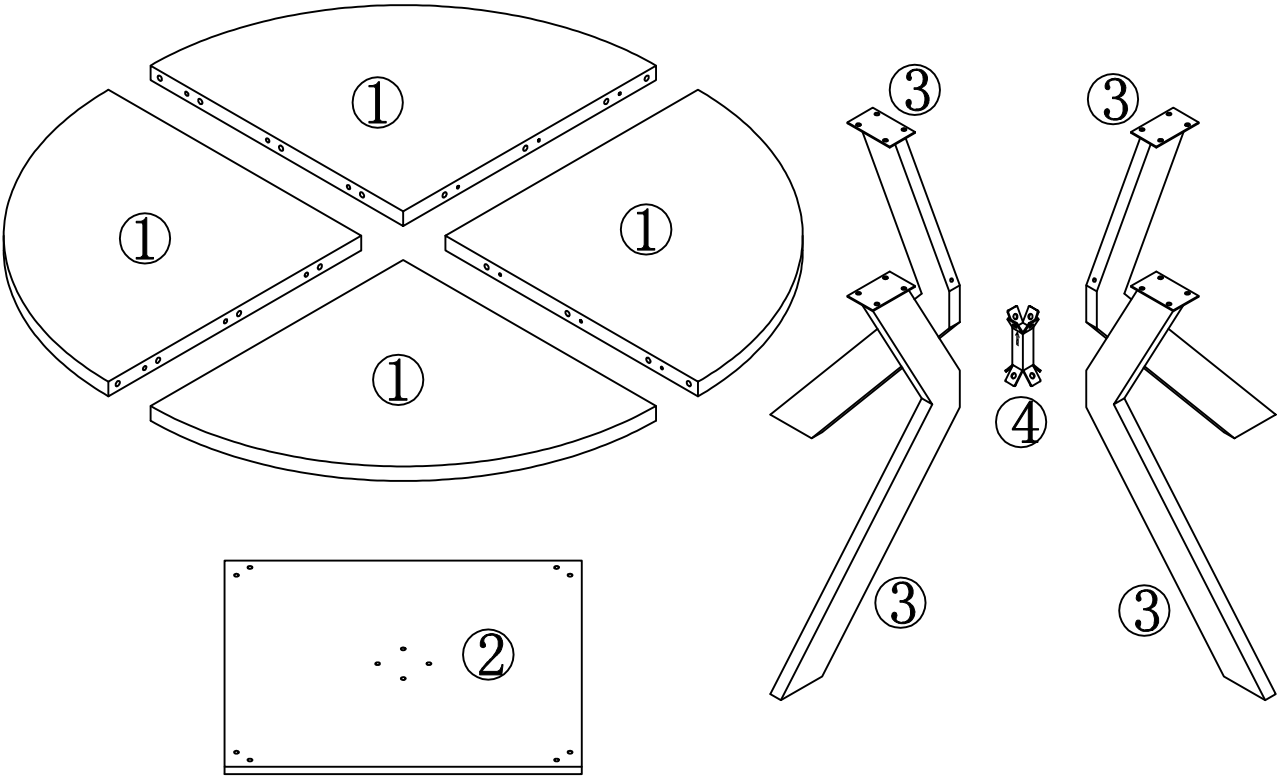
IMPORTANT:

1. Do not tighten bolts / screws completely until all bolts / screws are lined up and inserted into holes.
2. Do not over tighten screws and bolts to avoid stripping
3. Please use hand tools to assemble this product. Do not use power tools.

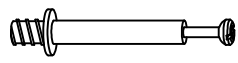
Included Accessories

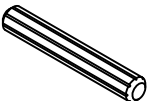
Code	Description	Qty
1	Panel	4
2	Roof plate	1
3	Supporting leg	4
4	Reinforced pipe	1

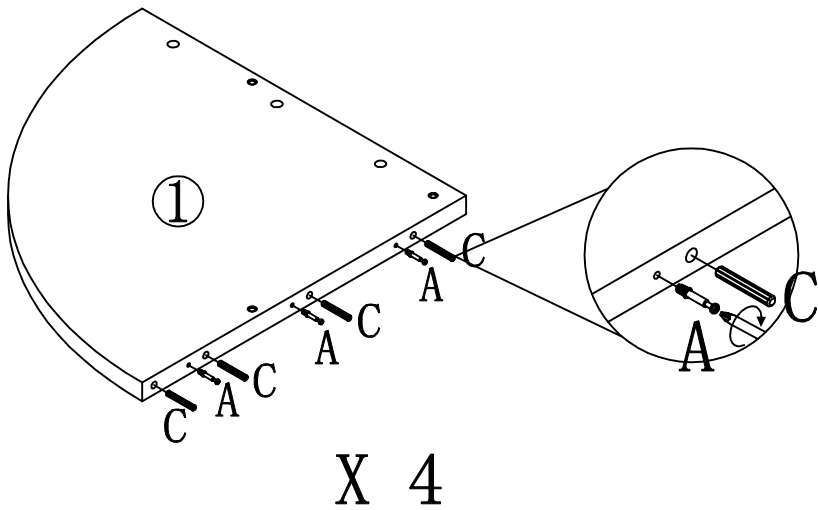
The Accessoriess




Step 1

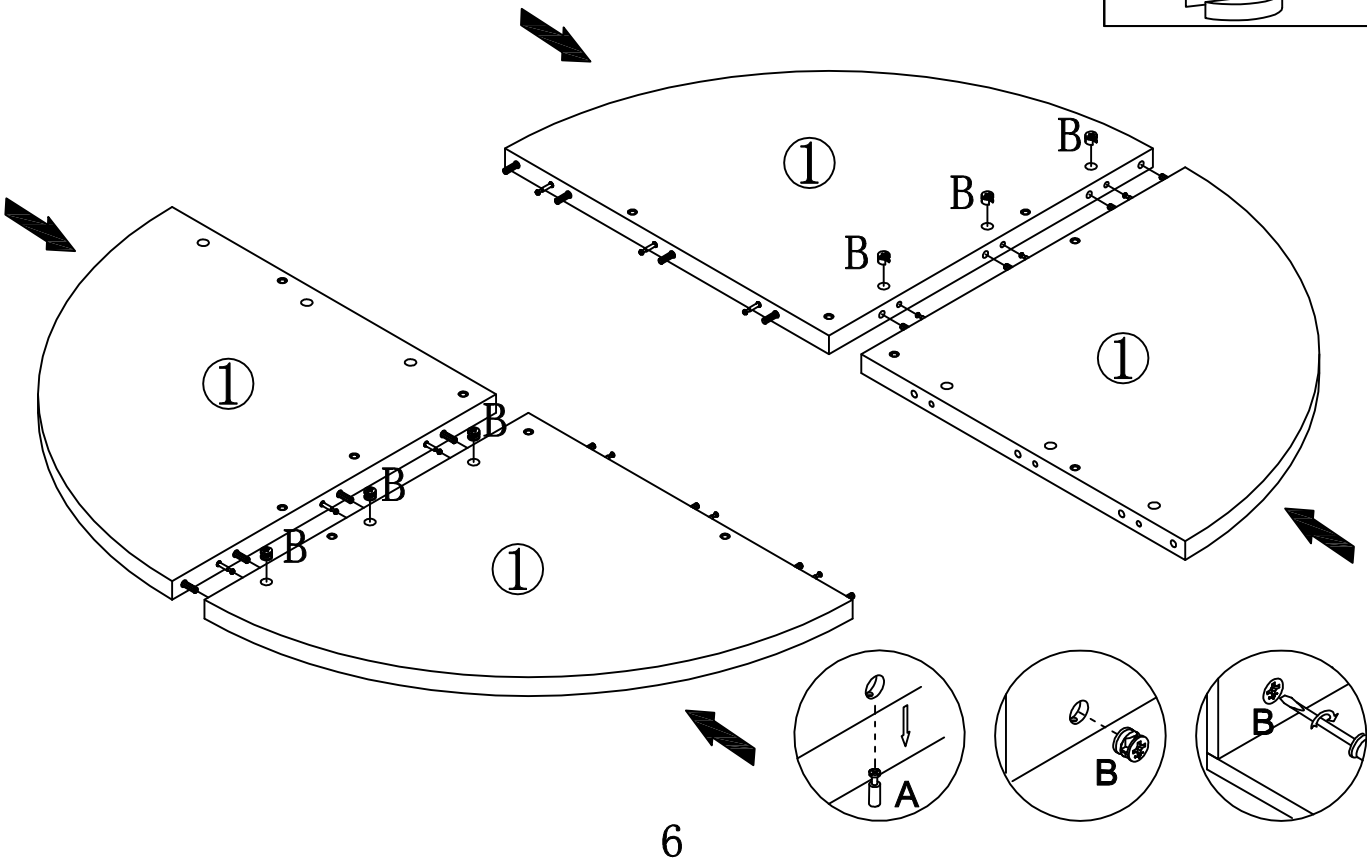
A	x 12
	

C	x 16
	

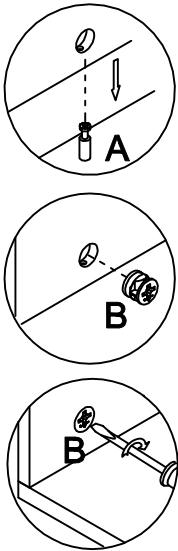
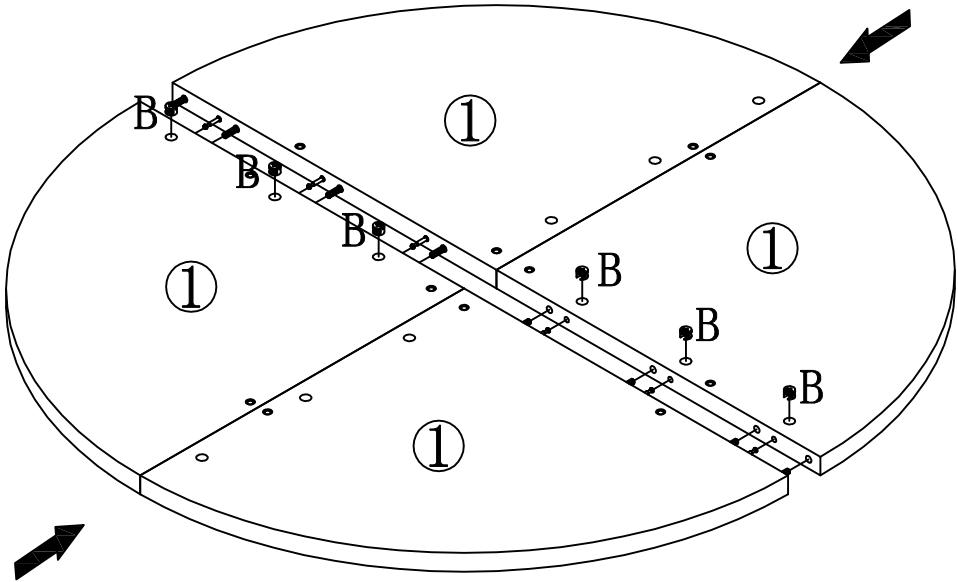
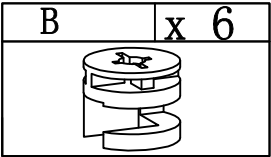


Step 2

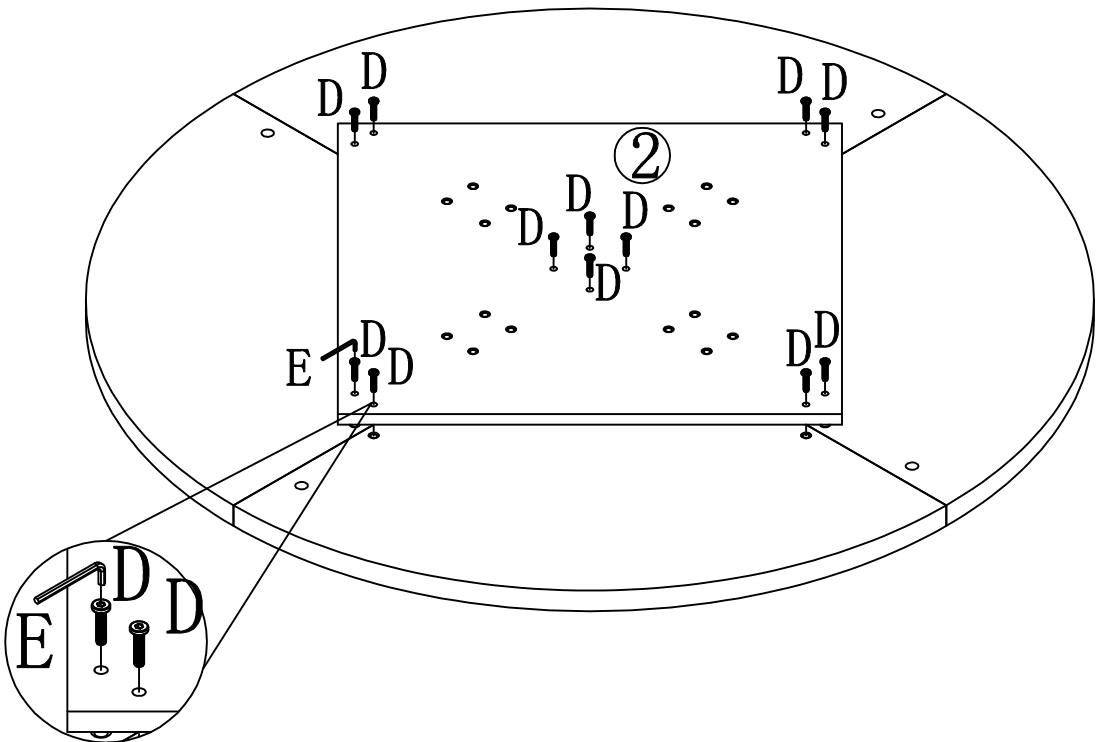
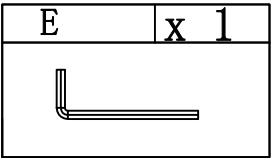
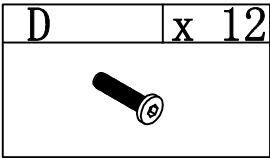
B	x 6
	




Step 3




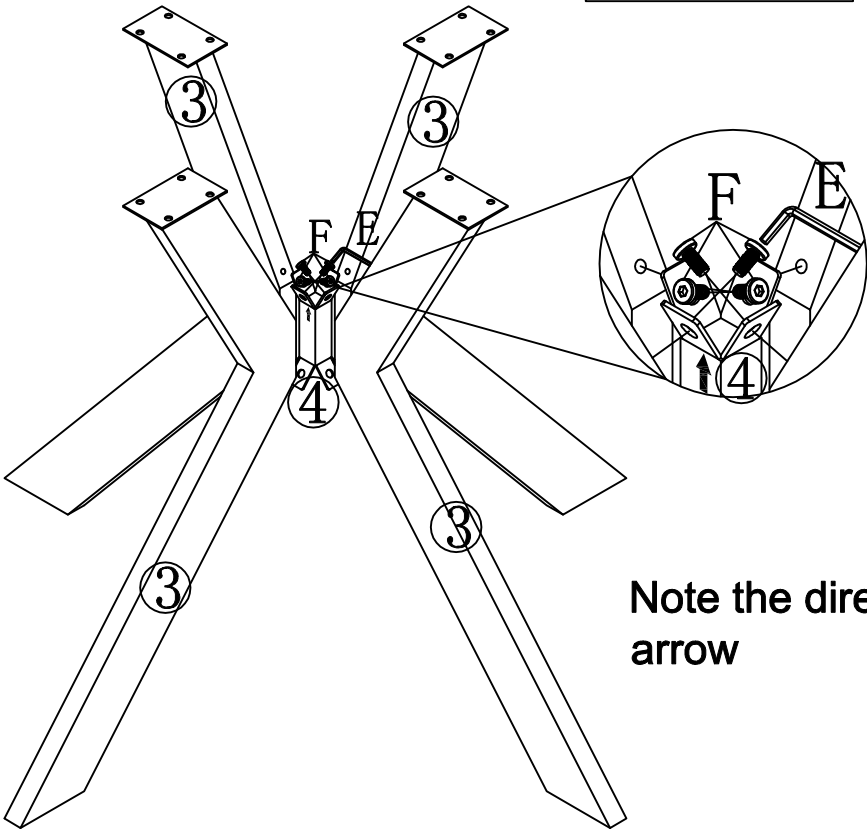
Step 4



Step 5


E	x 1
	


F	x 4
	

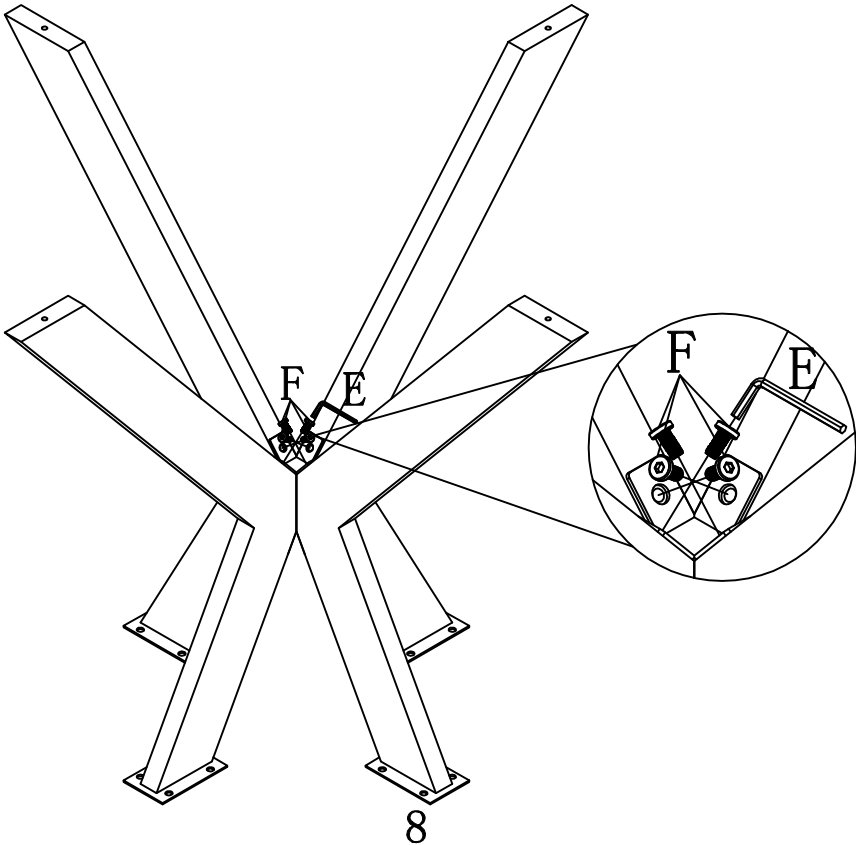


Note the direction of the arrow

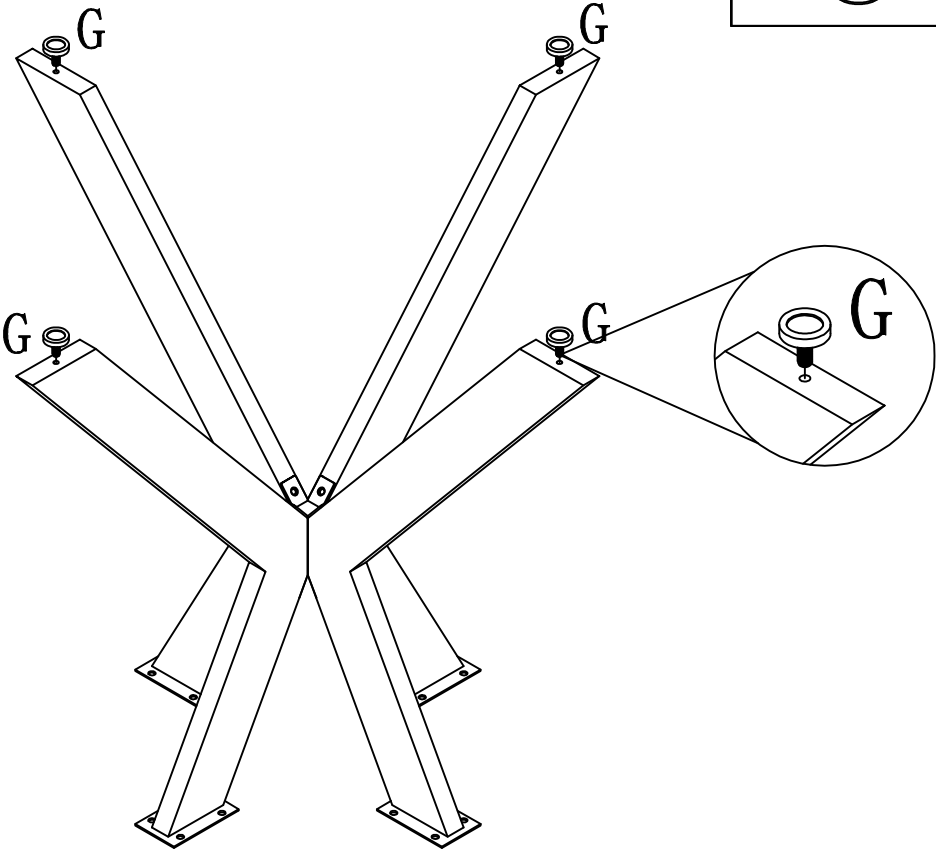
Step 6


E	x 1
	

F	x 4
	

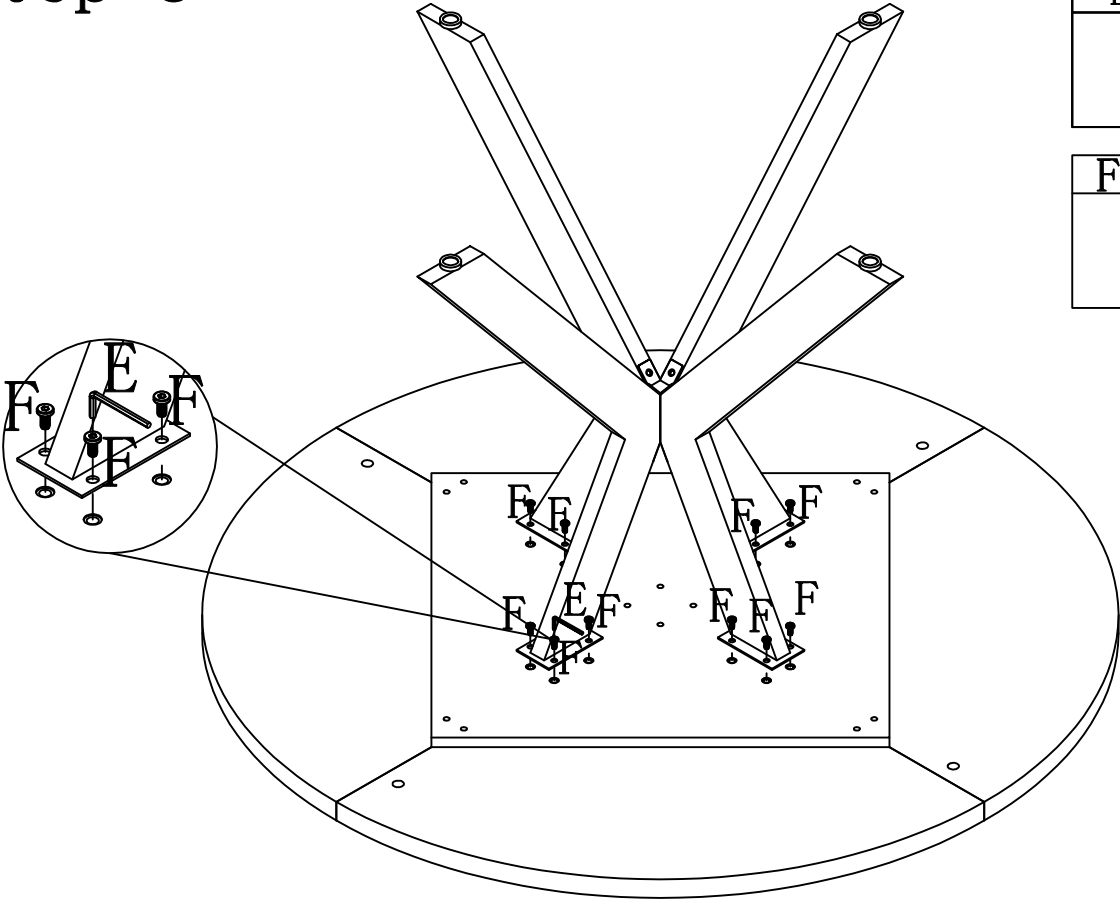



Step 7




G	x 4
	

Step 8



E	x 1
	

F	x 16
	

Step 9

