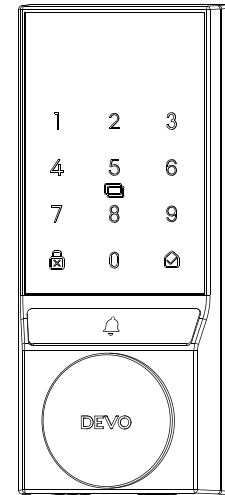




# USER MANUAL

— MODEL NO:G4 —



*Unlock the Future with Our Smart Lock:  
Security Meets Convenience*

Please read this manual carefully before using the lock  
Please take good care of this manual for reference after reading

## FOR USERS IMPORTANT

Thank you for choosing DEVO smart lock

In order to ensure the ease of use and safety of our products, we have prepared this manual to help you better understand DEVO Smart Lock.

Thank you for purchasing a "DEVO" smart lock. Considering the continuous improvement and updating of our products, the actual products may be slightly different from the pictures in this manual, please refer to the actual products!

DEVO smart lock is popular among users for its unique appearance, advanced and reliable technology and considerate after-sales service. Our smart locks have been tested for reliability and functionality. Ambient light test, temperature test, etc. constitute the leading and unique advantages of smart locks.

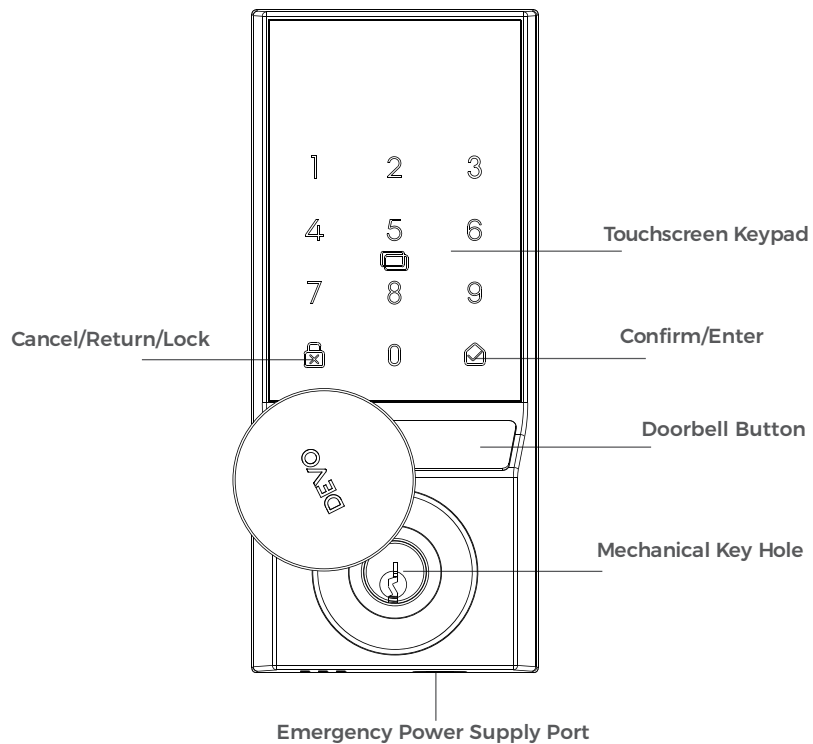
Our company has established a complete intelligent R&D, manufacturing and sales system. All smart locks are independently developed by the company. We sincerely invite you to share with us your experience of use and opinions of improvement, which will help us to improve our products.

## CONTENTS

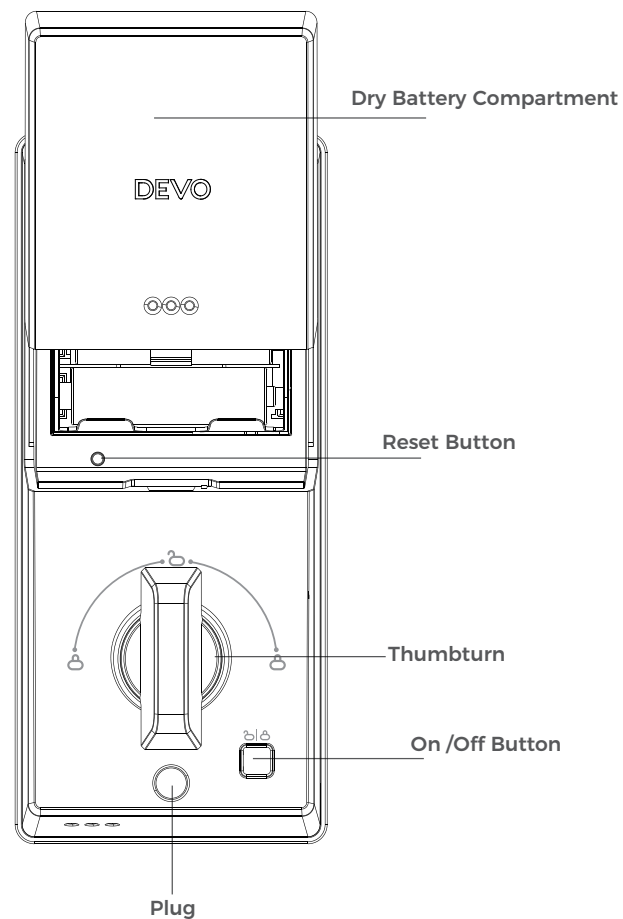
|             |                                 |       |
|-------------|---------------------------------|-------|
| • • • ..... | <b>Hardware Introduction</b>    | 01-03 |
| • • • ..... | <b>Compatible Doors</b>         | 04    |
| • • • ..... | <b>Parts List</b>               | 05-06 |
| • • • ..... | <b>Product Dimension</b>        | 07-08 |
| • • • ..... | <b>Installation Overview</b>    | 09-20 |
| • • • ..... | <b>Programming Instructions</b> | 21-32 |
| • • • ..... | <b>Product Parameters</b>       | 33-34 |

# 1/ Hardware Introduction

## (1) Overview

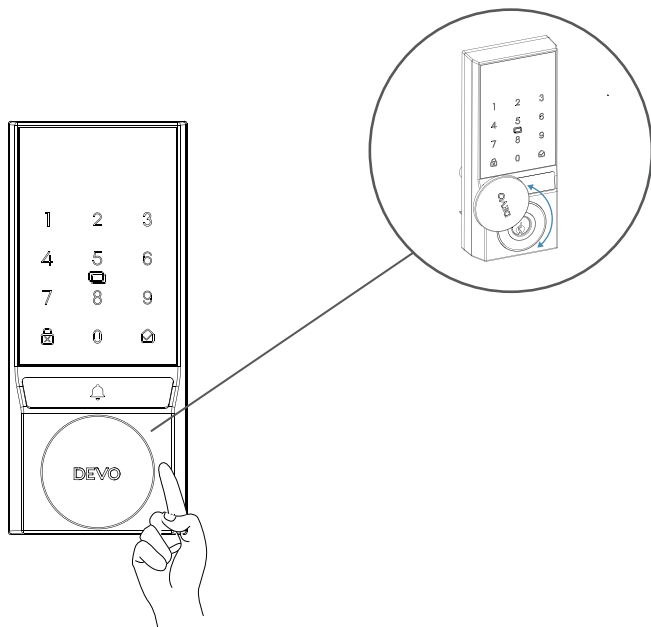


Note: The "Emergency Power Supply Port" is not for battery charging purpose and can only be used for emergency power supply to the lock.



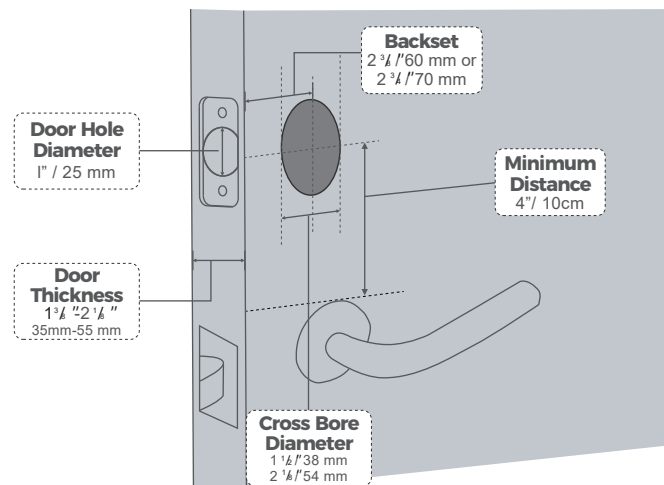
## (2) How To Open / Close Lock Cylinder Cover

Press and hold the Lock Cylinder Cover and turn it clockwise/counterclockwise to open it.

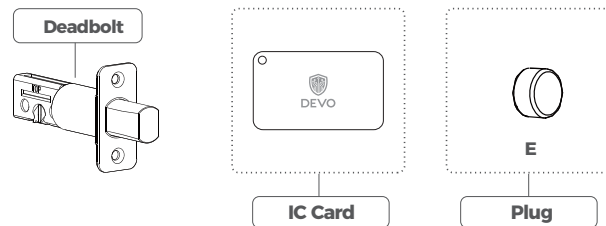
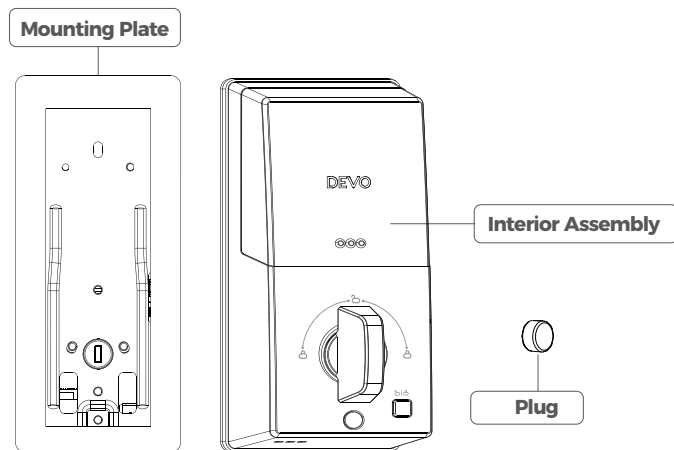
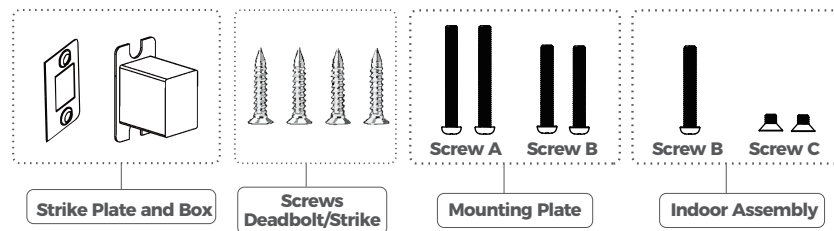
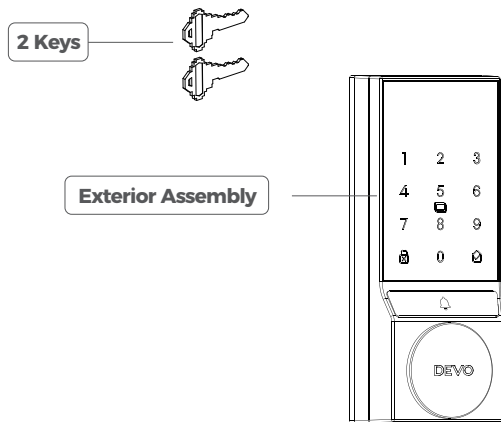


## 2 / Compatible Doors

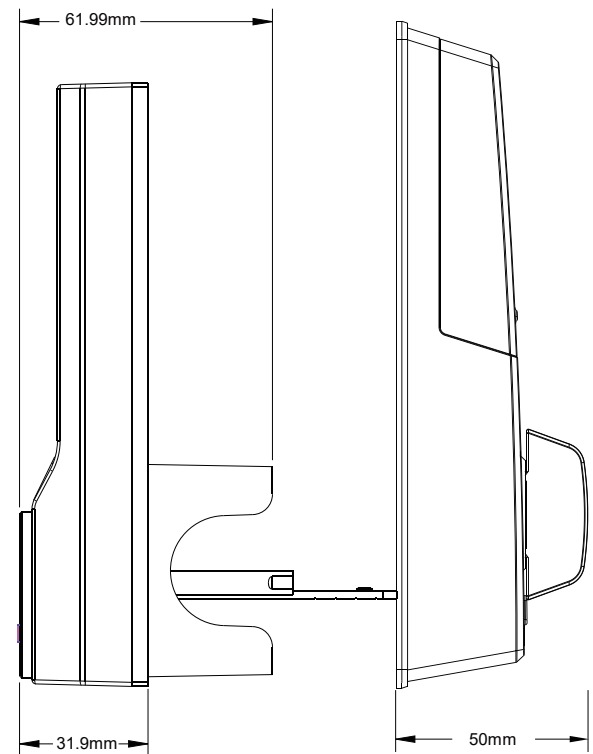
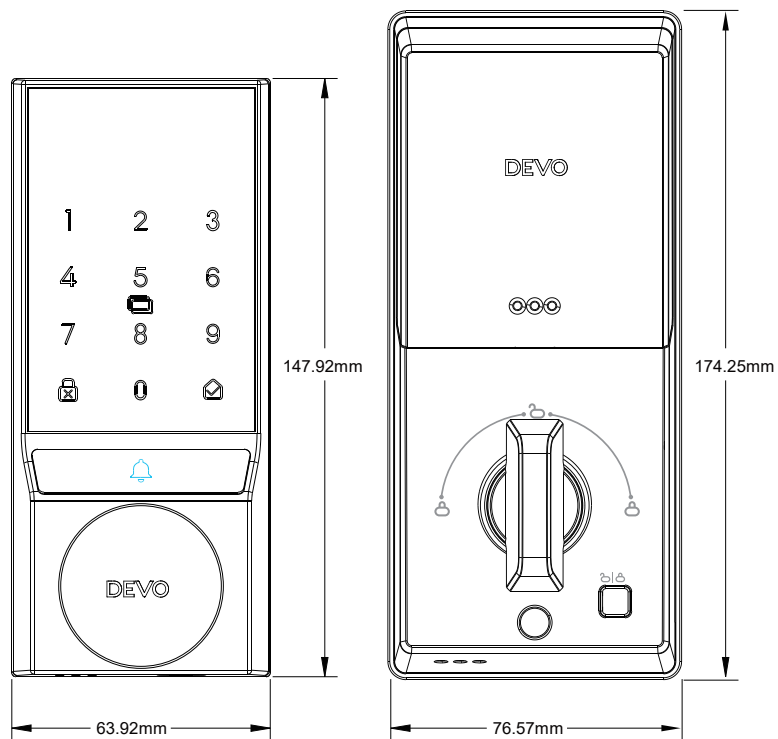
### Compatible Doors



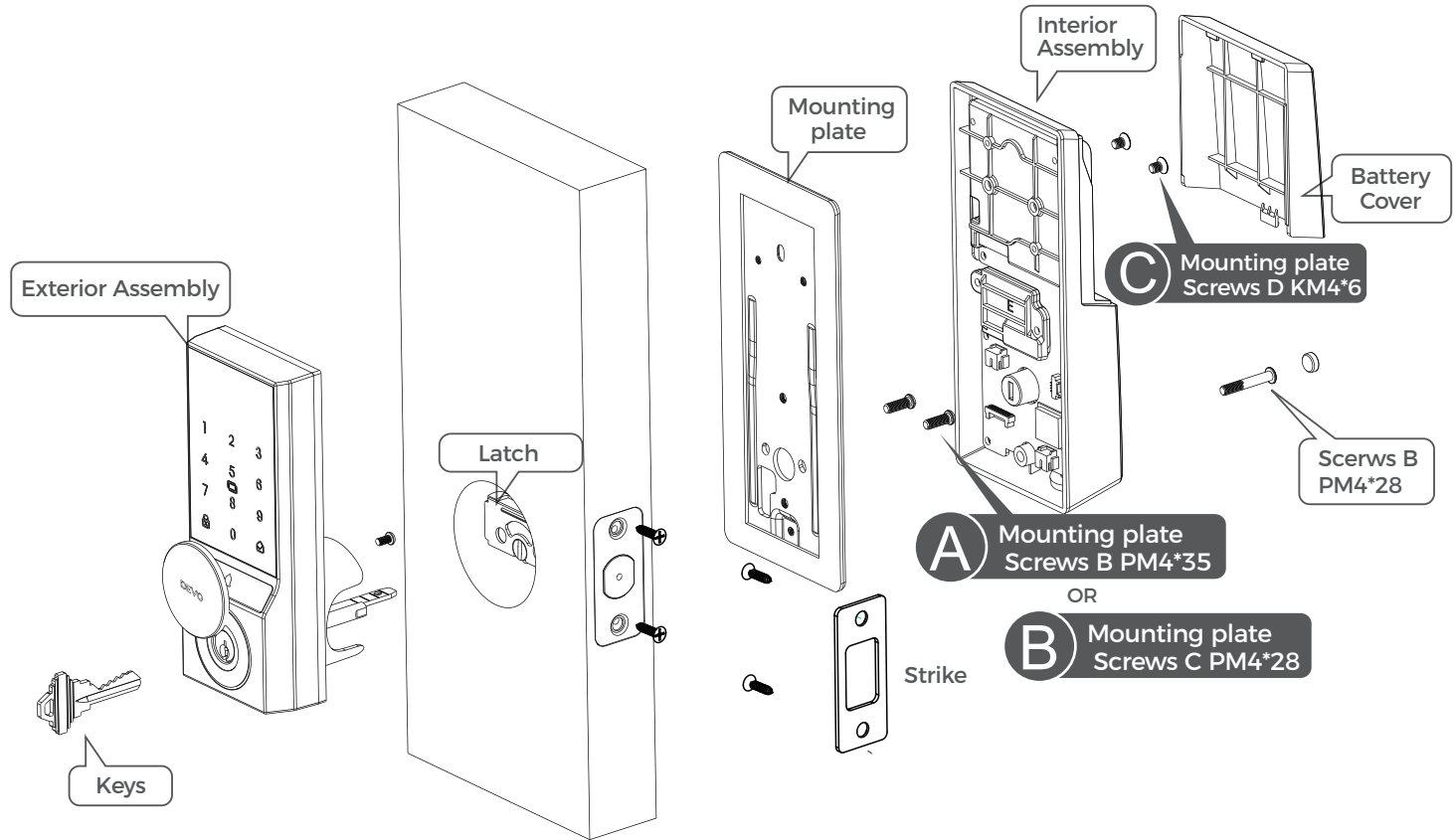
# 3 / Parts List



## 4 / Product Dimension



# 5/ Installation Overview



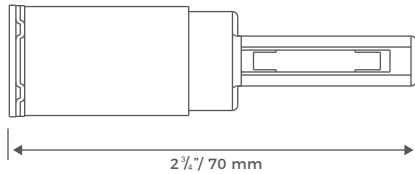
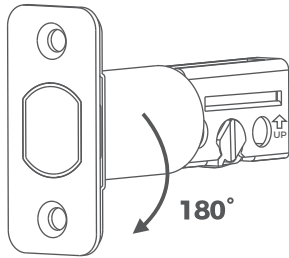
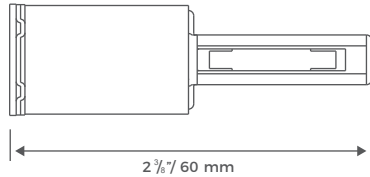
\*45-55mm door thickness use **A**

\*35-45mm door thickness use **B**

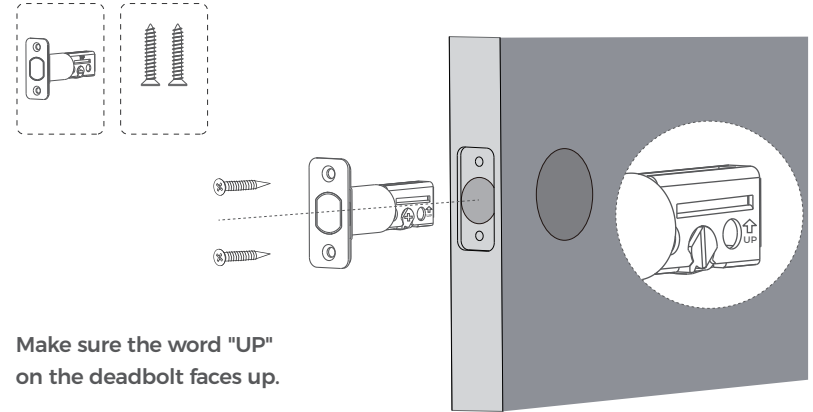
## Step 1. Install Deadbolt

(1). Check your door to see if the deadbolt requires adjustment.

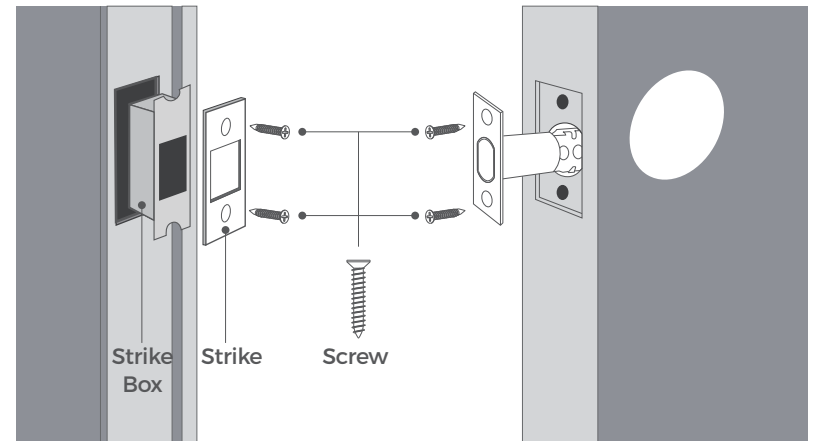
If the backset is 70mm, turn the faceplate 180° to extend the length.



(2). Insert and screw the deadbolt into the doorframe.



## Step 2. Install Strike Plate





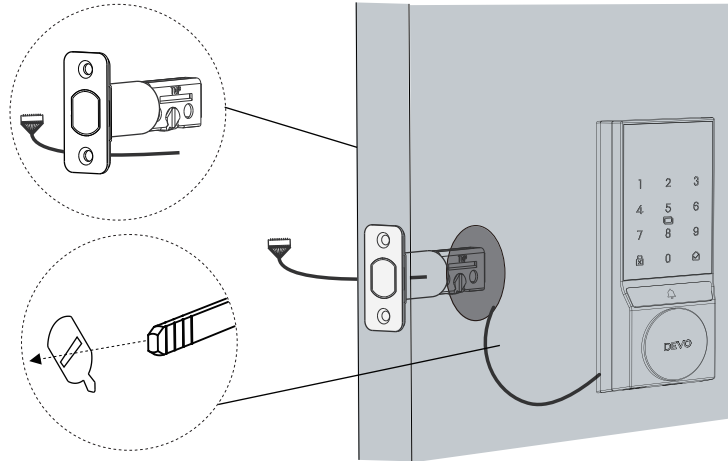
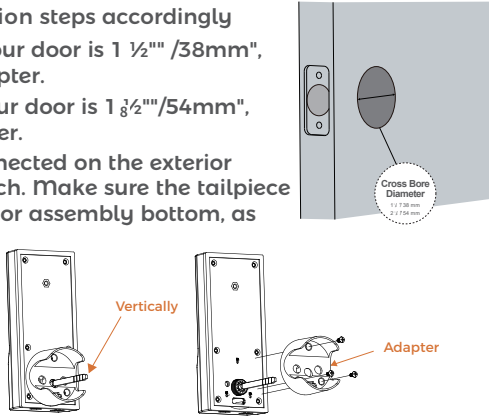
### Step 3. Install Exterior Assembly

**Remember to attach the rubber gasket to the handle before installation.**

(1). Measure your cross bore dimension and determine the installation steps accordingly

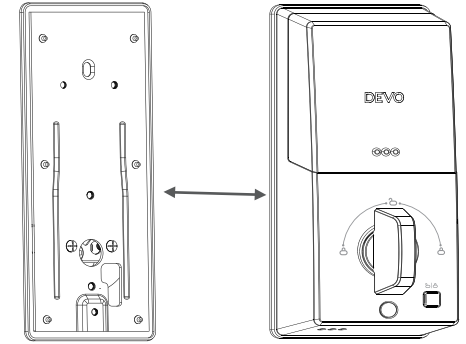
- If the cross bore of your door is 1 ½" / 38mm", please remove the adapter.
- If the cross bore of your door is 1 ¾" / 54mm", please keep the adapter.

(2). Route the cable connected on the exterior assembly under the Latch. Make sure the tailpiece is Vertically to the exterior assembly bottom, as the illustration shows.

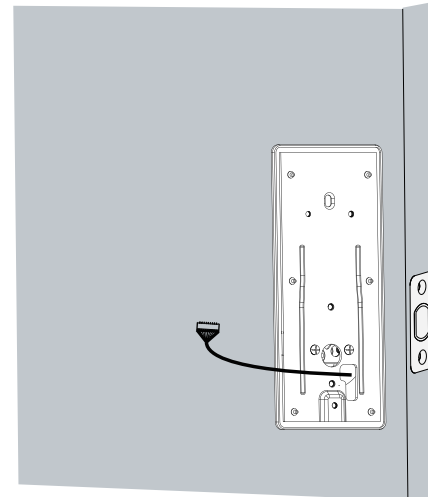


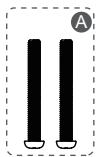
### Step 4. Install Interior Assembly

(1). Detach the back cover from the interior assembly.



(2). Run the wires through the back cover.



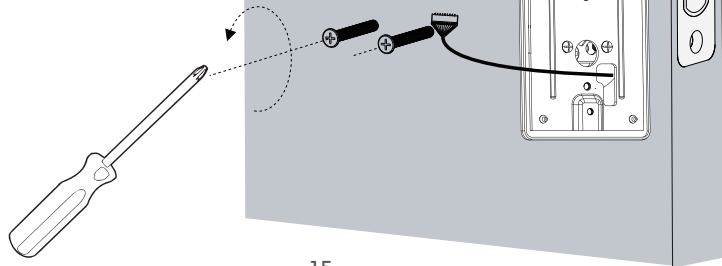


45~55mm door  
thickness use A



35~45mm door  
thickness use B

(4). Tightly fasten the screws  
in place. Set the screws  
with your hands, then use  
a screwdriver to secure  
them.

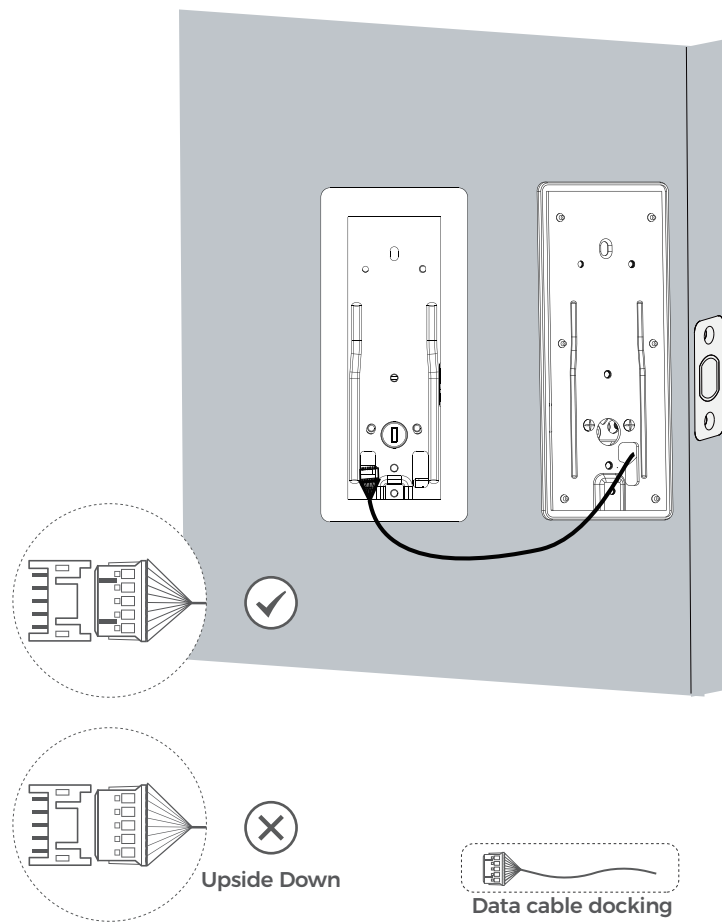


(3). Secure the back cover with screws.

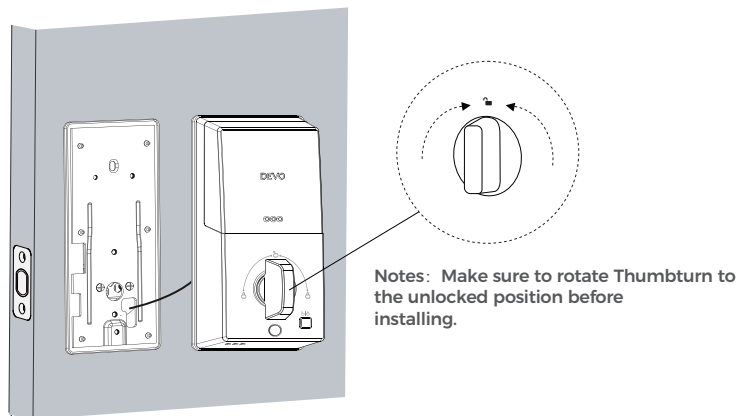
**Important:** Please select Screw A, Screw B  
based on the thickness of the door(35mm-55mm)

- 1. Thickness of Screw A compatible doors: 45-55mm
- 2. Thickness of Screw B compatible doors: 35-45mm

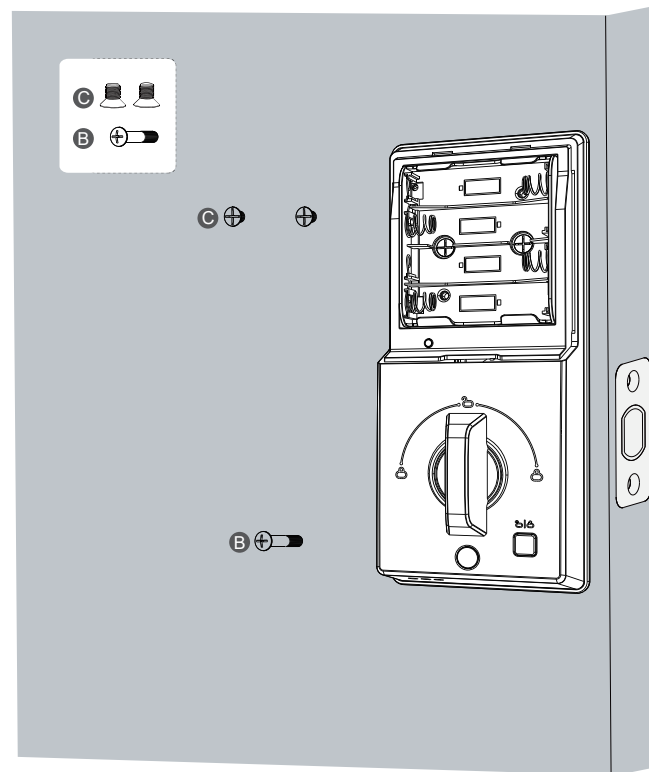
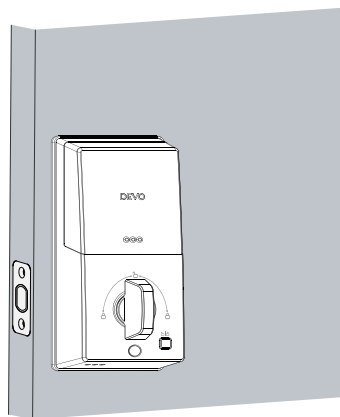
(5). Wire to the interior assembly.



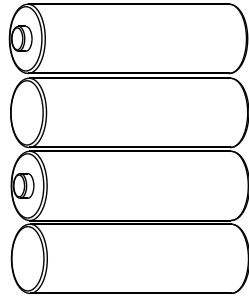
(6). Mount the interior assembly. Make sure the wire is tucked into the cabin on the back of the interior assembly.



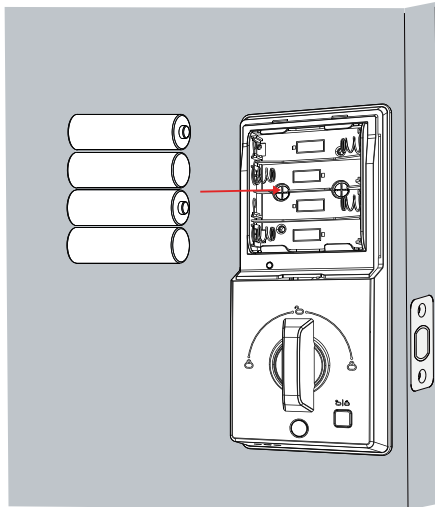
(7). Check if the deadbolt retracts by turning the thumbturn.



(8). Install 4 AA batteries into the door lock and it is ready to be used.

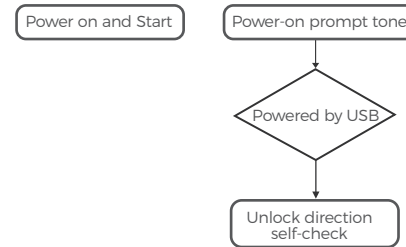


(9). Pay attention to the placement direction of the positive and negative poles of the battery when installing it.



**Apart from being able to configure your door lock through the app, you can also directly set the relevant settings on the door lock following the instructions below.**

### (1). Smart Lock Powered on



The smart lock self-checks the unlocking direction when powered on. After the self-check is completed, the lock will be closed.

## 6/ Programming Instructions

### (1). User Type

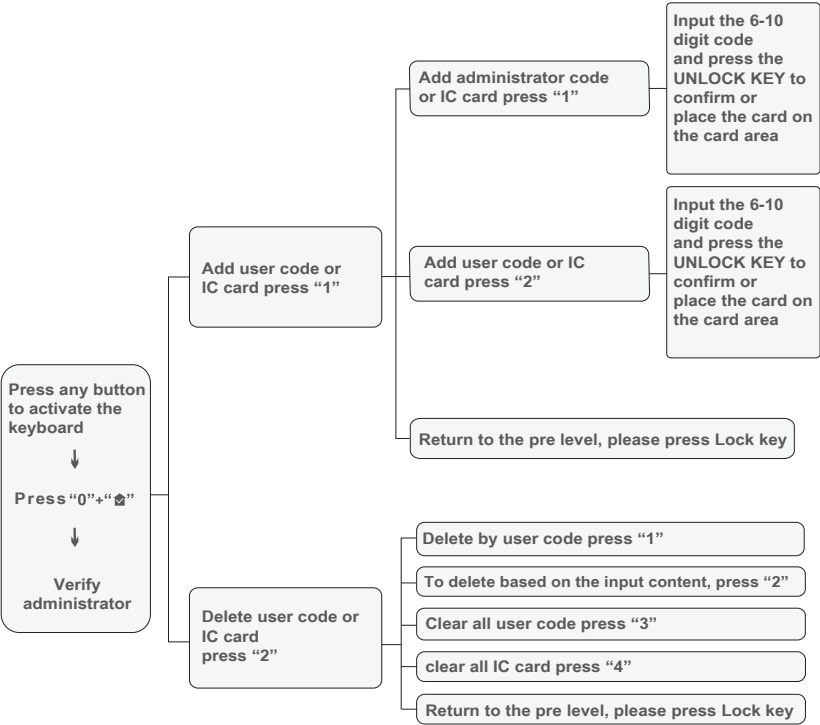
| Type          | Capacity | Description  |
|---------------|----------|--|
| Administrator | 3        | <ul style="list-style-type: none"><li>• Sequence ID 3</li><li>• Unlock</li><li>• Management</li></ul>                    |
| Regular User  | 97       | <ul style="list-style-type: none"><li>• Sequence ID 3-97,</li><li>• Unlock, (Invalid when the Anti-lock is On)</li></ul> |
| Total         | 100      | <ul style="list-style-type: none"><li>• Passcode Capacity: 50</li><li>• IC Capacity: 50</li></ul>                        |

(2). How to Program User Access Code

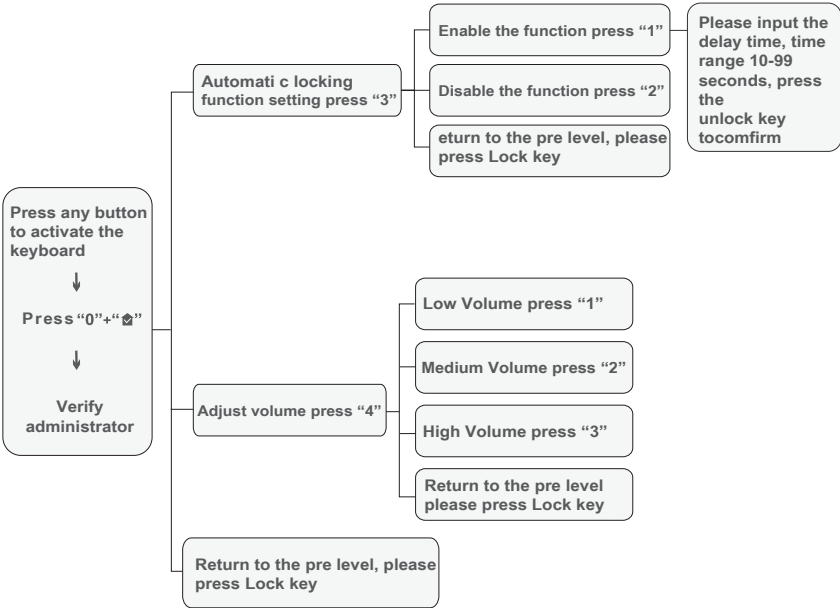


The default Administrator code is 123456. It's required that you change it to a code of your own before programming.

After adding the first administrator password or fingerprint, the default code will invalid.



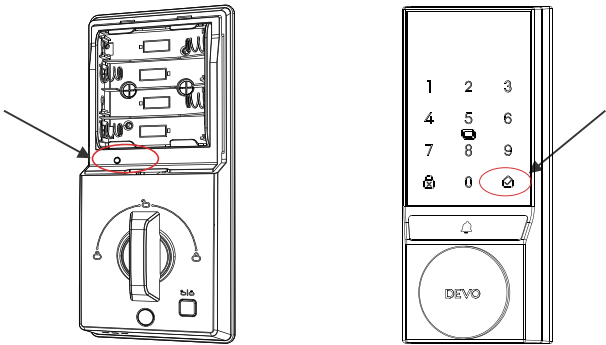
(3). Enter the Door Lock Setting Menu



Notes:25 seconds timeout, automatically exit menu (voice prompt, system has exited)

(4). Restore Factory Settings

Press and hold the reset button for 10 seconds (It will beep 10 times).  
Release it and press the confirmation button to restore to factory settings, and it will prompt "Initialization successful"



(5). Set Administrator Password



- 1. Press "0" + "☑" to wake up the keyboard, and you will hear a voice prompt to set the administrator password.
- 2. Enter the administrator password to be set, and press the "☑" key to confirm.
- 3. Enter the administrator password again according to the voice prompt, and then press the "☑" key to confirm.

(6). Others

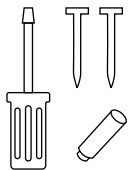
- 1. When the password, IC card input are entered incorrectly 5 times, the system will be locked for 1 minute. When the system is locked, pressing any button will result in a voice prompt of "alarm sound" and the indicator light will turn red. The system will not be unlocked until the 1-minute countdown.
  - 2. After the ultra-low power alarm, the motor cannot work. (Please replace the battery at this time, current firmware version, load condition (peephole lock control working status). If the battery power is lower than 10%, it will report low battery ).
- Shortcut keys**
- In any state, press "1+confirm key" to query the previous and next software version numbers, and the version number will be announced by voice. 1-minute countdown reaches 0 or the power is turned off and restarted.
- Normal open function setting**
- After the electronic user unlocks the door, in the unlock state, press 7 and 8 keys + unlock key to turn on the normal open setting. The voice prompt "Normal open mode, please pay attention to safety" will be issued. As long as the external or internal door is opened, the normal open function system lock will be cancelled.

| Operation   | Operation result                               | Indicator status                               | Voice broadcast  |
|---|--|--|--|
| Password /<br>Card /<br>Remote<br>unlock /<br>Wake up panel | Verify successfully                            | The number keys will light up except for key 5 | Verify successfully<br>Unlocked                                      |
|   | verification failed                            | The number key 13579 will light up             | Voice prompt for verification failure                                |
|   | Wrong password for more than five times        | /  | Alarm sounds and locks the system                                    |
|   | Battery level is less than 10%                 | Low battery warning                            | The battery is too low, please use the key or emergency power supply |
| Lock  | Successful                                     | /  | Locked   |
| Enter the menu  | To wake up the panel press 0 + "☑"             | /  | Please enter administrator password                                  |
| Invalid menu item   | Repeat the current menu content                | /  | /  |
| Factory reset   | Press and hold the "set" button for 10 seconds |  | Press "☑" to confirm   |
| Power on the device   | Install the battery and turn on the power      | All number keys light up simultaneously        | Power-on tone  |

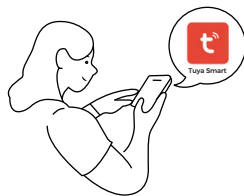
## (7). App Operation Guidance

### 1). Connect The Lock To Internet

- ❶ Following the installation instruction to install the smart lock.



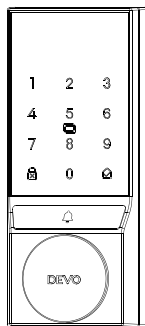
- ❷ Download Smart Life App.



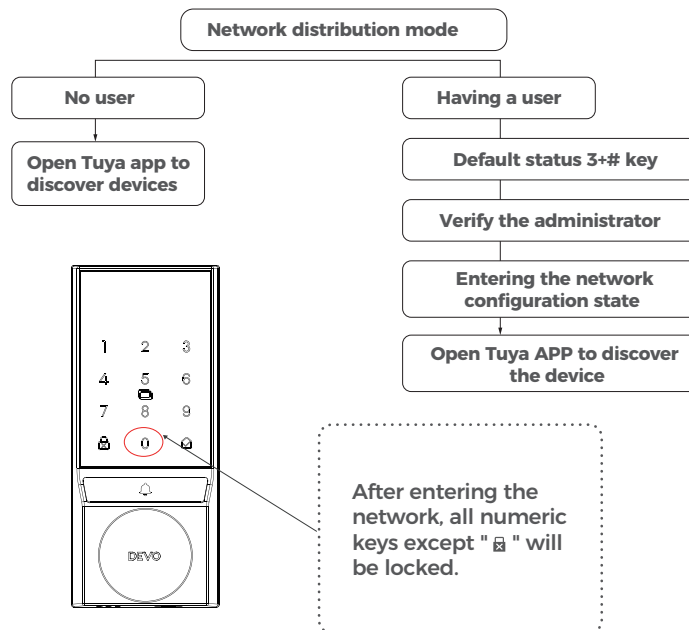
- ❸ Register and login to the Smart Life App.



- ❹ Calibrate the smart lock and Bluetooth.



Notes: After 25 seconds, the system will automatically exit the menu (voice prompt: system has exited)

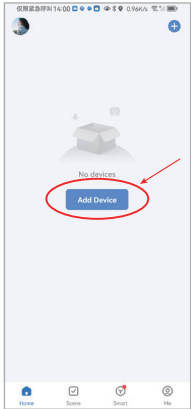




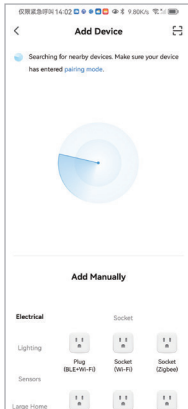
## (8). Main Interface Introduction

### 1). Add Device (Smart Life App For Reference)

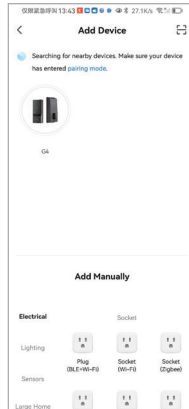
 Please make sure that your Phone 's Bluetooth is turned on



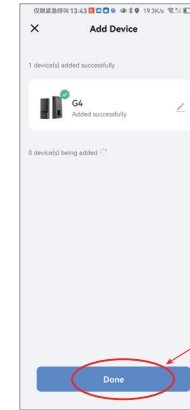
① Click 'Add Device'



② Waiting for device search



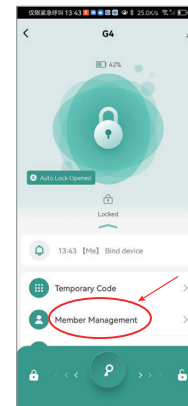
③ Once the device is discovered click G4 device



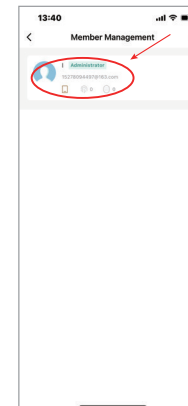
① Device added successfully  
Click 'Done'

## 2). Network Configuration

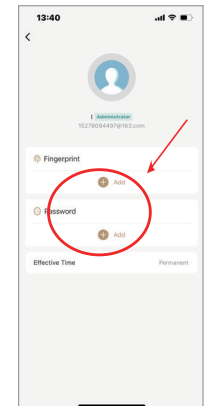
### 3). Members Management



① Member management

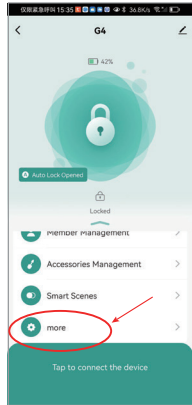


② Select the corresponding member

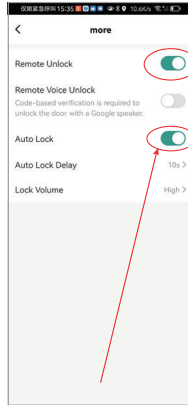


③ Add or delete fingerprints and passwords

#### 4). Settings



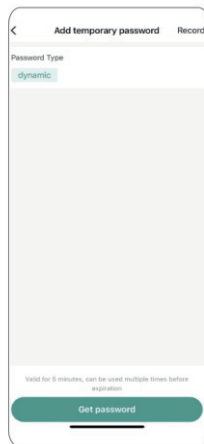
① Enter More



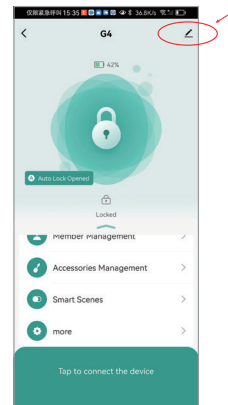
**Note:**  
The Bluetooth version  
does not support  
remote unlocking

② The lock end does not support  
automatic locking after closing

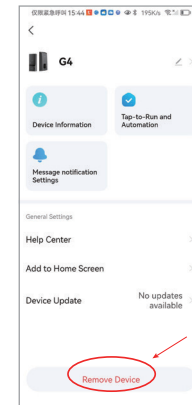
#### 5). Password Settings



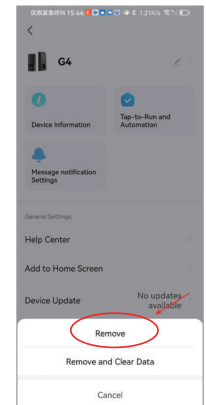
#### 6). Device Unbinding



①



②



③

## 7 / Product Parameters

|                           |  |
|---------------------------|--|
| Power Supply              | 4.8V-6V Four Cell No.5 Battery/1200mAh |
| Emergency Power           | 5V                                     |
| Fingerprint Capacity      | Passcodes 50 MAX , IC Card 50 MAX      |
| Identification Speed      | 0.25sec                                |
| False Positive Rate       | <0.0001%                               |
| Rejection Rate            | <0.1%                                  |
| Working Temperature       | -15C°-50°C (5°F - 122°F)               |
| Working Humidity          | 0%~85% ( No Condensation)              |
| Standby Current           | < 120 μA                               |
| Dynamic Power Consumption | < 250 mA                               |
| Material                  | Aluminum Alloy                         |
| Passcode Length           | Supports 6-10 Digits                   |
| Emergency power Interface | Type-C                                 |
| Scramble Passcodes        | Support Scramble Passcode              |

3578 123456 65987

Real Passcode

Random Digits

(Add Random Digits Before Or After The Real Passcode)

Random Digits No Length Limit)



**For any questions, please feel free to contact us, we will send you a reply and solve the problem within 24 hours.**



**Email: [DEVO.services@outlook.com](mailto:DEVO.services@outlook.com)**

**DEVO reserves the final interpretation right of all terms and conditions in this manual.**

**MADE IN CHINA**