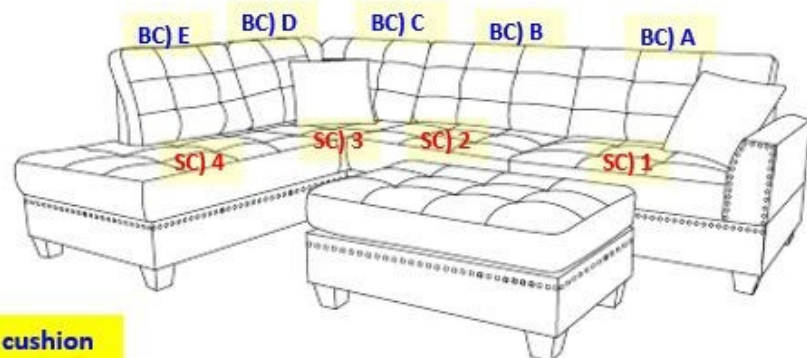


*** NOTICE BEFORE ASSEMBLY ***

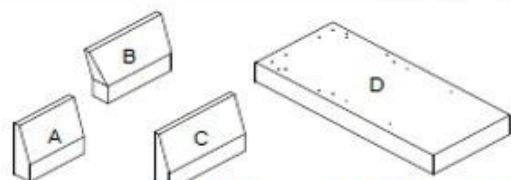
Please choose the **CHAISE** will be on
The **LEFT** or **RIGHT** hand side.

ASSEMBLY INSTRUCTION I: CHAISE ON THE LEFT

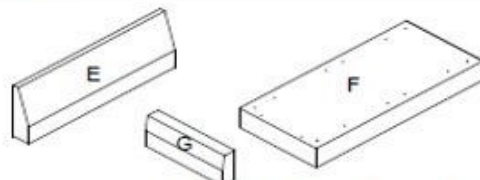


BC) back cushion
SC) seat cushion

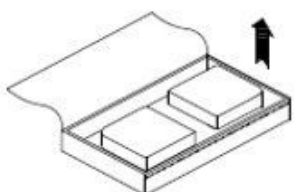
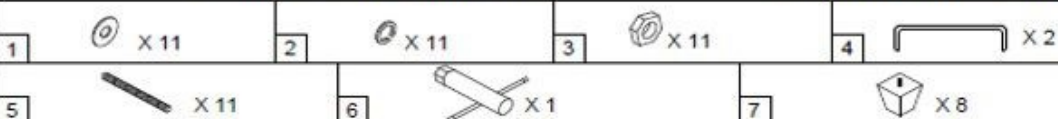
PART LIST



*Cushions, pillow and legs included



*Cushions, pillow and legs included

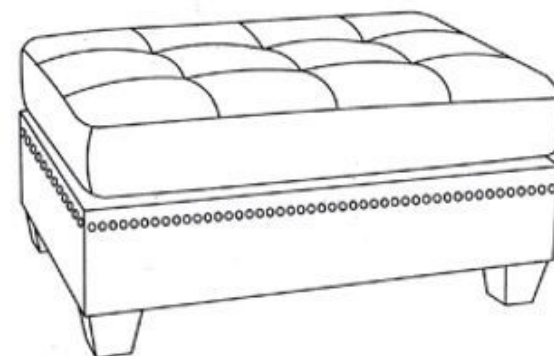


Open up the Velcro of Non-Woven Fabric cover on the bottom of the seat frame to remove seat cushions, back cushions and pillow.

*** PLEASE REMOVE ALL PARTS FROM SEAT FRAMES AND BACKS BEFORE ASSEMBLY***

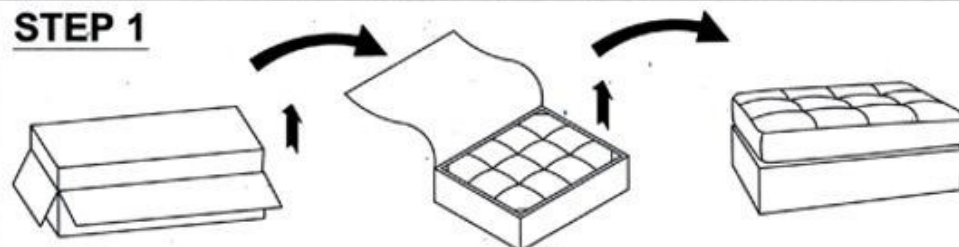
1/5

Assembly Instructions



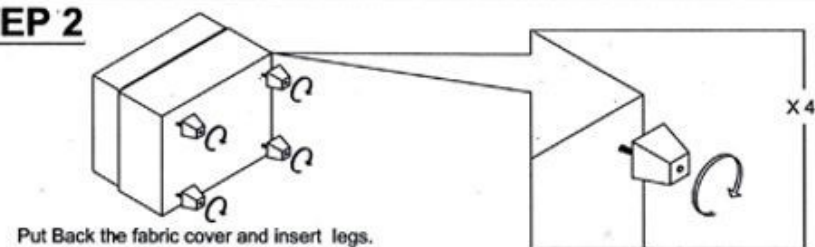
1

STEP 1



Open up the Velcro of Non-Woven Fabric cover on the bottom of the seat frame to remove seat cushion out.

STEP 2



Put Back the fabric cover and insert legs.

1/1