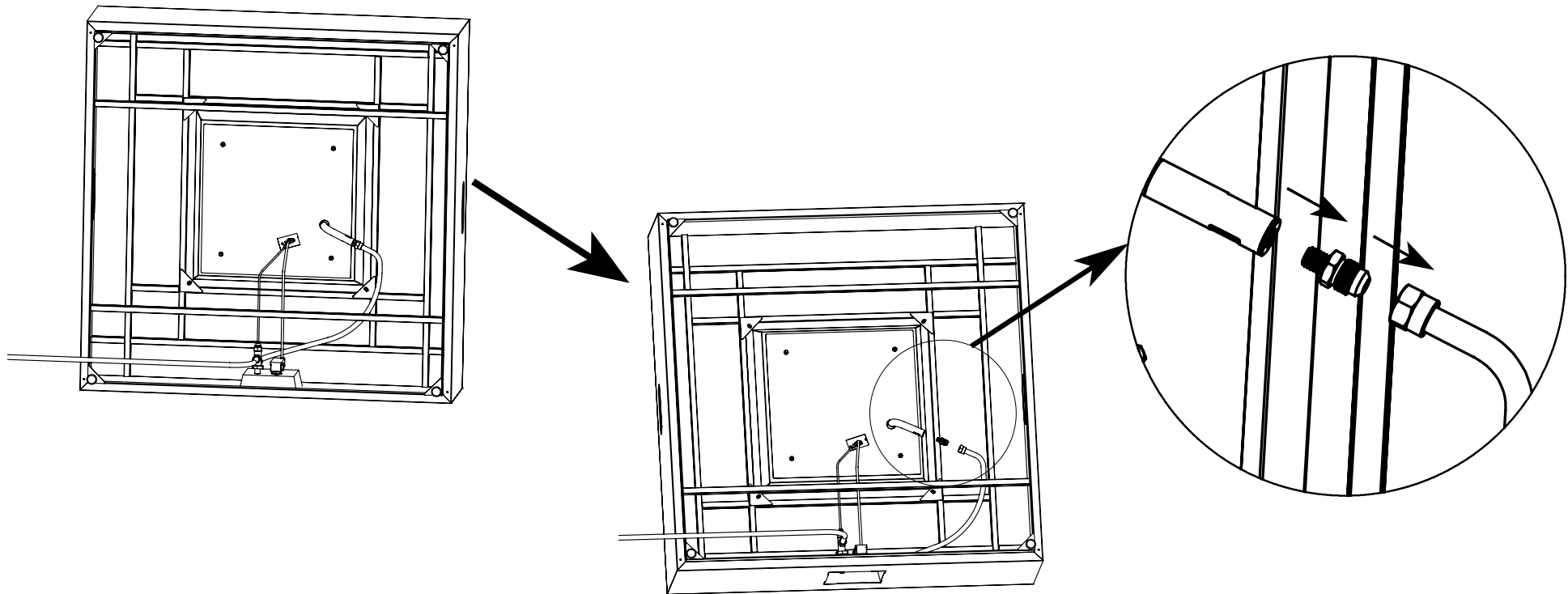


**WARNING:** Natural gas conversion must be performed only by a qualified natural gas provider or service technician.

**WARM REMINDER:** When replacing the orifice, ensure that the gas supply has been disconnected and that the work environment is well-ventilated.

## ● **STEP 1**

Remove the connection between the corrugated pipe and the nozzle ( $\Phi 2.25$ ), remove the connection between the nozzle ( $\Phi 2.25$ ) and the burner.



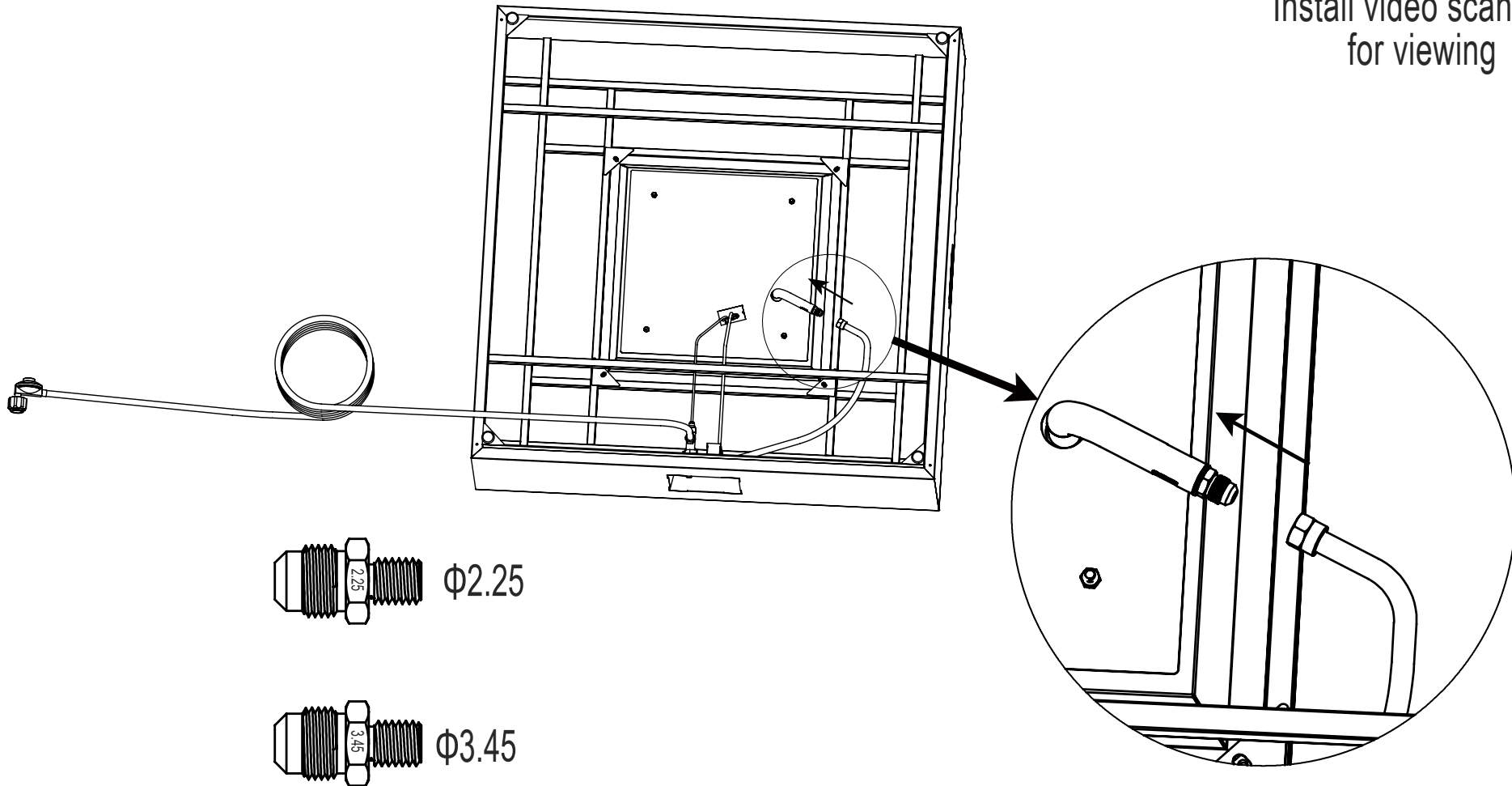
\* You will need two wrenches for disassembly and tightening.

# ● STEP 2

After removing the  $\Phi 2.25$  nozzle, connect the  $\Phi 3.45$  nozzle to the burner and tighten it securely. You will need two wrenches for disassembly and tightening.



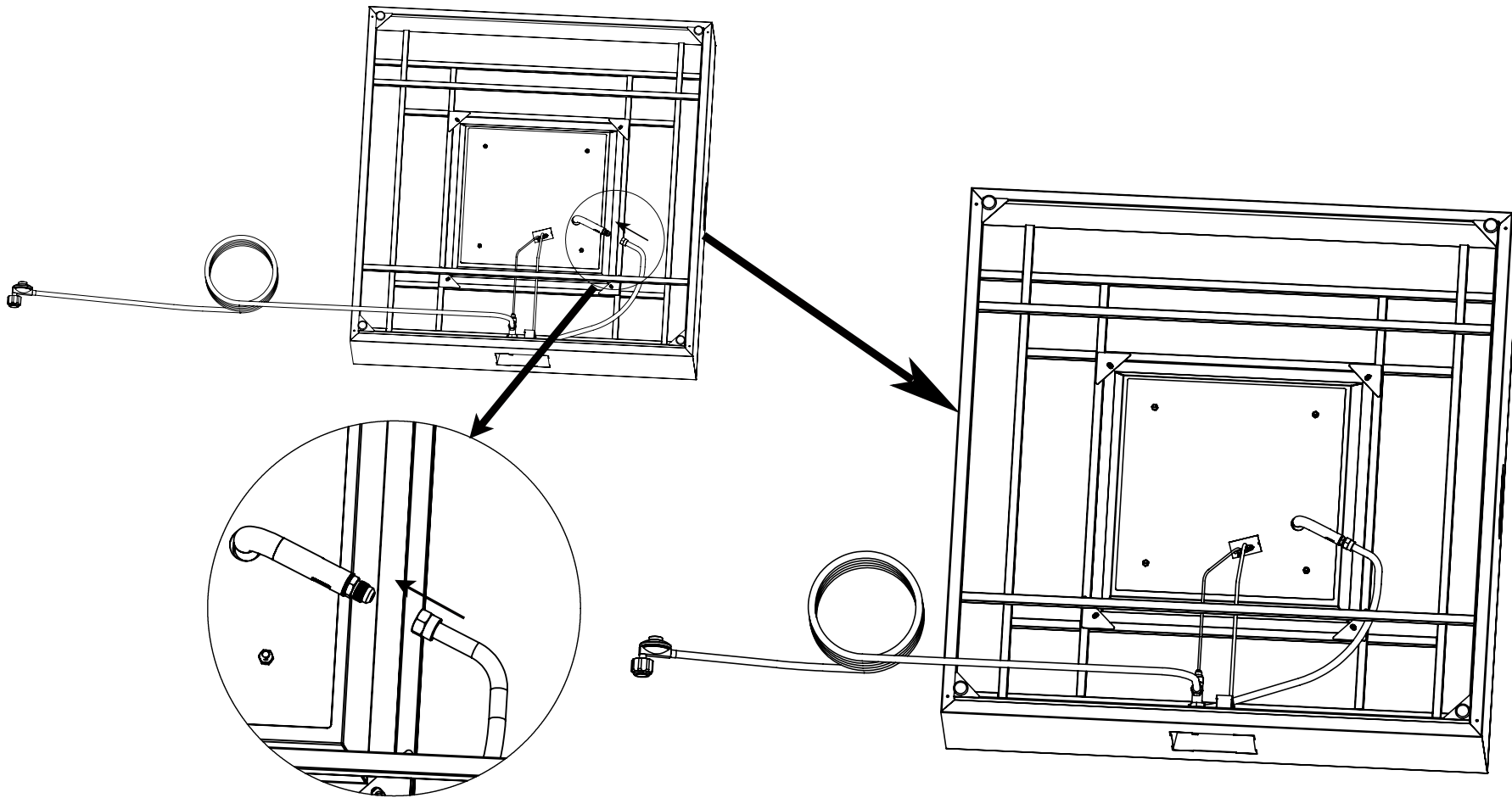
Install video scanning  
for viewing



\* You will need two wrenches for disassembly and locking.

# ● STEP 3

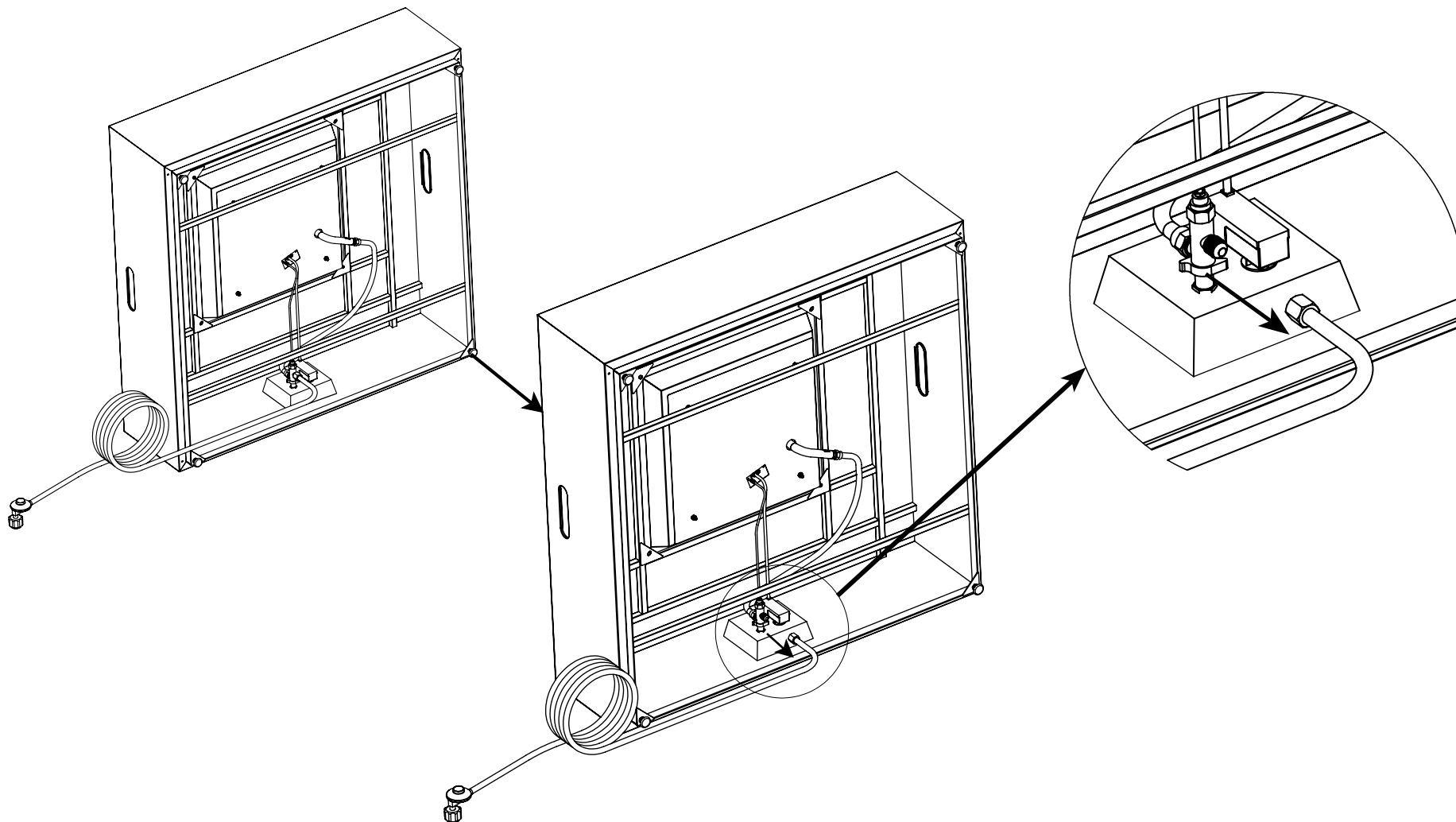
Connect the corrugated pipe to the nozzle and tighten it securely.



\* You will need two wrenches for disassembly and locking.

# ● STEP 4

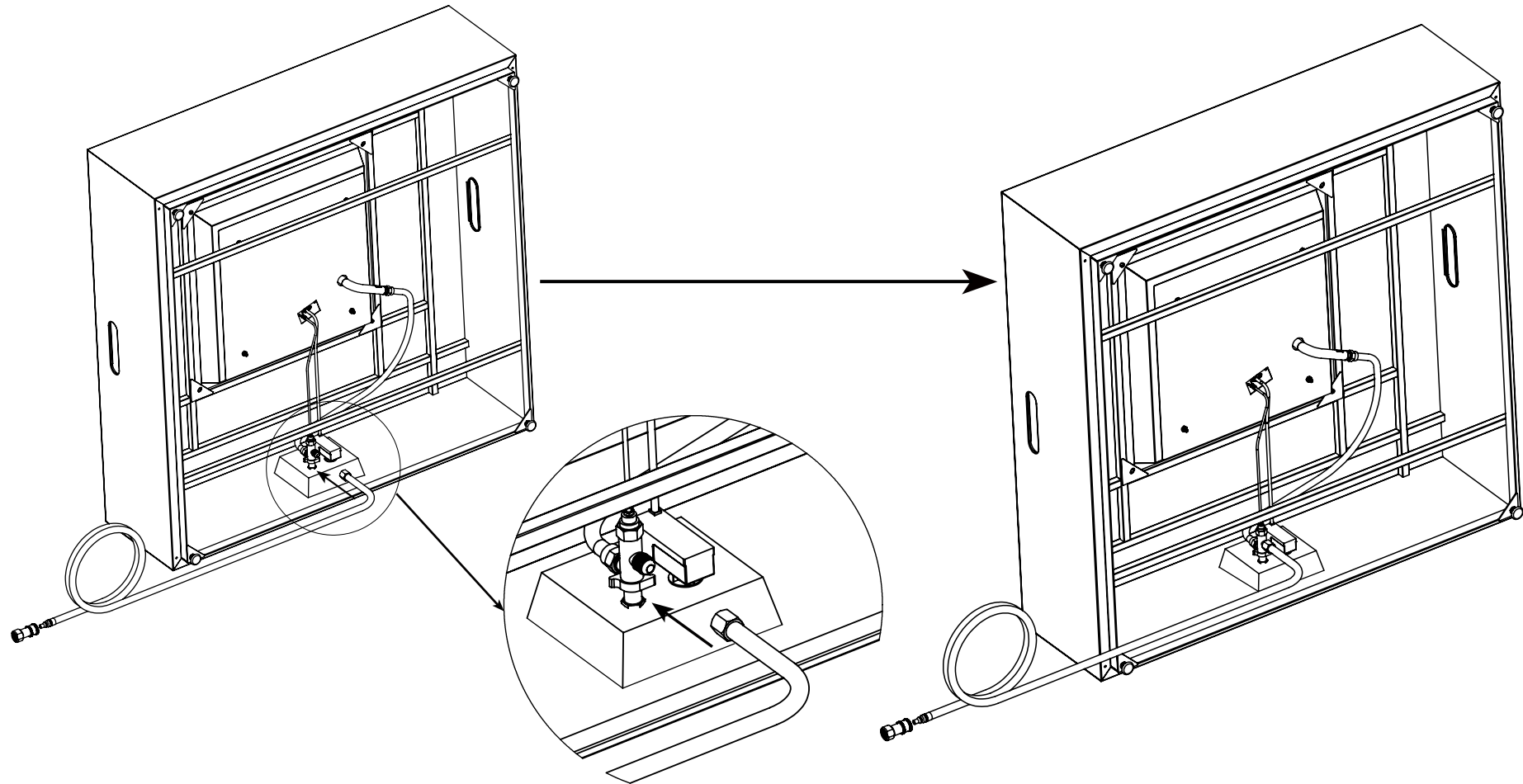
Then, disconnect the connection between the regulator and the gas valve.



\* You will need two wrenches for disassembly and locking.

# ● STEP 5

Connect and secure the natural gas hose to the gas valve.



Warm reminder: Please prioritize using a 1/2 inch ID natural gas hose. Fire pits with a power of less than 60,000 BTU can also use a 3/8 inch ID natural gas hose.

\* You will need two wrenches for disassembly and locking.