



NAMASKAR - DARK GREY

NAMASKAR, a traditional greeting originating from Sanskrit, means "I bow before you", and is the basis of inspiration for our new collection of flatweaves.

The rugs in this collection have neutral, timeless colors and a silky and sophisticated texture, which can be used as an overlay base, or even be unique protagonists of sober and minimalist decorations.

PRODUCT DETAILS

Catalog Code: NAMASKAR - NK04 - DARK GREY

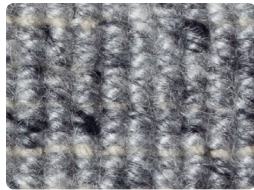
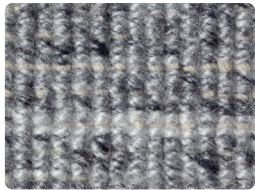
Construction: Hand Woven

Weight: 1500g | **Pile Height:** Flatweave

Composition: 60% Wool + 20% Viscose + 20% Cotton

Origin: India

Sizes



CARE INSTRUCTIONS

Sanitize regularly with the use of vacuum cleaner at low power. In case of stain, dry it immediately and clean with mild soap mixed with equal parts of white vinegar and water. Specialized washing is recommended once a year or when necessary.

AVAILABLE COLORS

View More Details



NK01 - LIGHT GREY



NK02 - SILVER



NK03 - BEIGE



NK04 - DARK GREY