

Specifications:

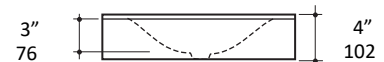
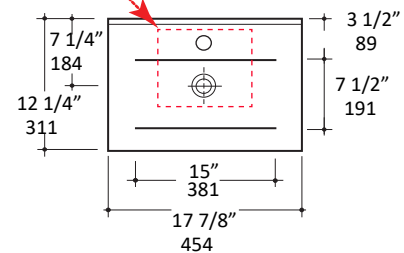
Installation:	Vessel or vanity-top
Exterior Dimensions:	17 7/8" w x 12 1/4" d x 4" h
Material:	Porcelain
Weight:	20 lbs
Overflow:	No
Finishes:	001 - White
Faucet Holes:	00 - no hole 01 - one centered hole 02 - two hole - center and right, 4" spread 03 - three hole, 8" spread
Cutout Size:	10" x 8" (template available upon request)
Faucet Hole Size:	Ø 1 3/8"
Drain Hole Size:	Ø 1 3/4"



Features:

- Porcelain sink without overflow
- Most standard American drains can also be used
- Unglazed back - it must be installed against a wall
- Wall-mounting bolts are included
- Unglazed bottom

CUT OUT
10" x 8"
254 x 203



Codes + Standards:

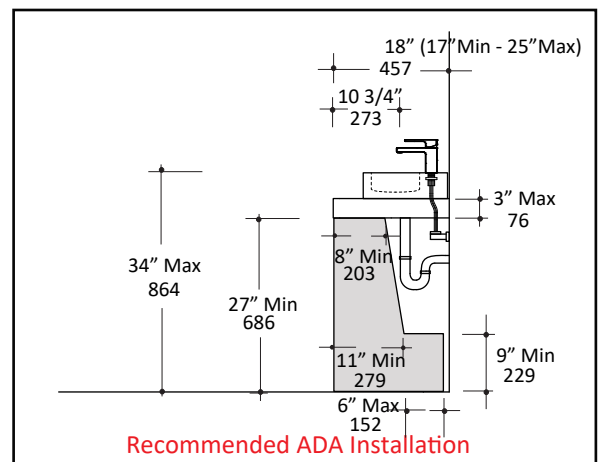
- Meets and exceeds applicable national codes and standards



compliant when installed to specific requirements of this regulation

Recommended Items:

- Furniture
 - MAR-FR-18 - Floor-standing metal console stand with a towel bar and optional shelf
- European drain without overflow
 - 7100-13



LACAVA reserves the right to revise any dimension or information on this sheet without notice. Dimensions are nominal and may vary within an industry accepted tolerance of 1/4". Drawings provided herein are meant to give the user an idea of the product and are not made to scale. Revised: 8/21/2019