

---

# Outdoor / Indoor Wall Clock with Temperature & Humidity

## User Manual

### 1 Quick Start Guide

1. Remove locking pin before use.
2. Insert one AA battery. Use a Carbon Zinc AA battery for most accurate clock movement. Set the time manually, removing the center cover on the back of the clock. Rotate cover counterclockwise to remove and set time.
3. Hang the clock on the wall.
4. Temperature and Humidity are automatically read

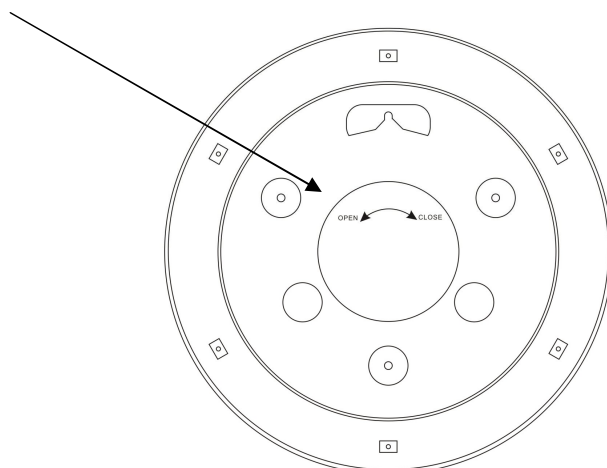
### 2 Important Notes

#### Before using this product, please read the following:

1. Read these instructions – All operating instructions should be read before the unit is operated.
2. Clean only with soft damp cloth.
3. Do not use near any heat sources such as radiators, heat registers, stoves, or other device (including amplifiers) that produce heat.
4. Refer all servicing to qualified service personnel. Servicing is required when the device has been damaged in any way, such as liquid has been spilled or the device has been exposed to rain or moisture, does not operate normally, or has been dropped.
5. The product must not be exposed to substantial mechanical strain or strong vibrations.
6. Do not leave packaging materials unattended. It may become a dangerous plaything for children.
7. Handle the product with care. It can be damaged by dropping and vibration.

### 3 Controls

The clock controls are on the back of the clock face, under the center cover. Remove the cover by rotating counter clockwise. Replace cover after adjusting.



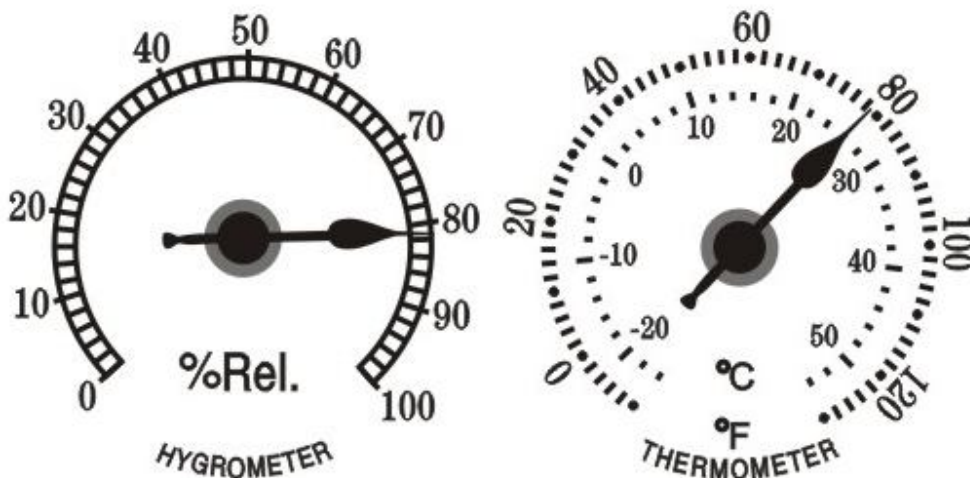
---

## Temperature and Humidity Sensors

The clock includes a temperature and humidity sensor,

Temperature and humidity are greatly influenced by direct sun and radiant heat from the wall it is attached to.

We recommend mounting the clock in a protected, shaded area to insure accurate temperature and humidity.



### 4 Maintenance

The device is maintenance-free but should be cleaned occasionally. Use a slightly dampened and soft cloth to clean the housing. Do not use abrasives or solvents.

### 5 Specifications

Operating Voltage	1.5 Vdc
Battery	1 x Carbon Zinc AA Battery
Battery Life	About 1 year (high quality batteries)
Dimensions	Approximately 18"

Measurement	Range	Accuracy	Resolution
Temperature	-10 to 130 °F	± 1.8 °F (± 1 °C)	1 °F
Humidity	0 to 100%	± 6% (10 to 40%) ± 5% (40 to 75%) ± 7% (75 to 85%) ± 8% (0 to 10 and 85 to 100%)	1 %