

PACKING LIST



Hanging Bracket*1



Cleat*3



LED Bathroom Mirror



Instruction Manua



SAFETY INSTRUCTIONS

- ① Please read the instructions carefully before using.
- ① Do not disassemble or refit the products.
- ① Press touch sensor button properly.
- ① Handle with care during installation or moving.
- ① Keep the mirror dry moisture reduces the sensitivity of the product.
- ① Turn off the power before cleaning. The surface of the mirror should be cleaned with glass cleaner , please make sure the mirror is completely dry before using.
- ① Turn off the power and avoid direct sunlight if not used or stored for a long time ,keep it away from children.
- ① Do not approach or put the product into the fire in case of fire or explosion.
- ① Stop using it immediately if abnormal condition occurs.

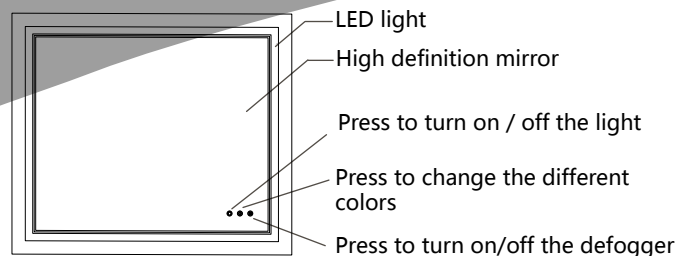
WALL-MOUNTED LED BATHROOM MIRROR

OPERATIONS MANUAL

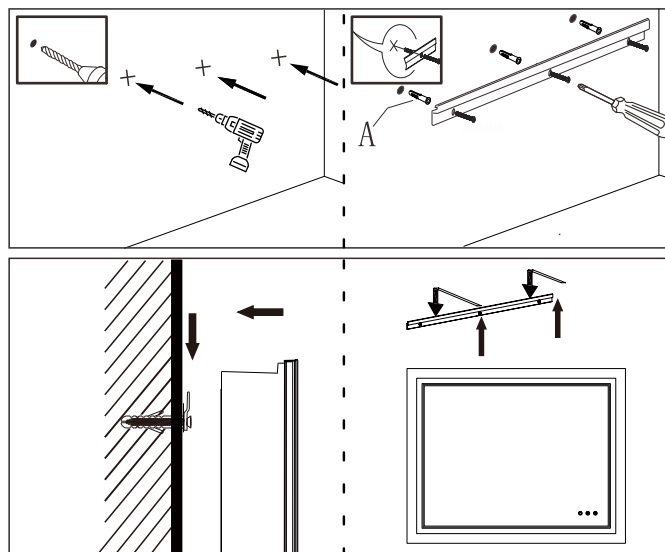


ASSEMBLY & INSTALLATION INSTRUCTIONS

ILLUSTRATION



INSTALLATION METHOD



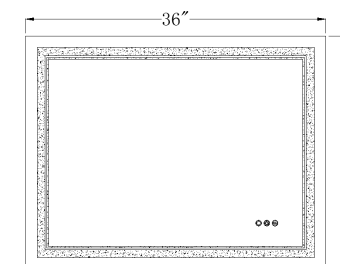
- ① Measure the distance of the aluminum strip behind the mirror with a tape measure.
- ② Mark at the determined installation positions and draw an auxiliary line with a pencil.
- ③ Drill holes at installation positions with an electric drill.
- ④ Hammer the expanded plastic material into the holes.
- ⑤ Take out the metal hanging piece and use a screwdriver to fix the hanging pieces on the wall with screws.
- ⑥ Point the aluminum strip at the metal pieces and hang the mirror on the wall.

OPERATING INSTRUCTIONS

- Please use standard plug to connect the power directly.
- The boot is the color temperature of the last shutdown, with a memory function. Press to turn the light on/off Long press to adjust the brightness.
- Press the switch to adjust the different color temperature of the light. You can choose warm, natural or cold light.
- Press switch to turn on/off the anti-fog. The button lights blue when the demister is on.
- Unplug when it is no used.

SPECIFICATIONS

[Product Name] LED bathroom mirror
[Material] Aluminum frame +Glass
[LED Color Temperature] 3000-4500-6000K
[LM] 6300LM
[Power Supply] Powered driver AC,120V
[Output]Around 63W



SPECIAL FEATURE

- 3/16 inch Thickness high definition eco-friendly glass mirror
- With switching and dimming function
- Free to switch between warm, natural and cool light
- With anti-fog function
- Built-in power plug

Warning: If any special control devices are used with this fixture, follow the instructions carefully to assure full compliance with N.E.C.requirements.If there are any questions,contact a qualified electrical contractor.

Caution: It is highly recommended to get an electrician to install this light.Please make sure to turn the electricity off at the main circuit breaker before beginning installation. All glass is fragile. Use care when handling glass component (s) and/or lamp(s).