

Industries

ASSEMBLY INSTRUCTIONS

FRANCESCA STOOL



Weight Capacity



Locate the **HARDWARE PACK** which is attached to the shipping carton with red tape.

01/2024



Have questions about assembling your item?



Items or parts damaged?



Missing a part?

We're here to help! (Monday-Friday from 9am-5pm CST)



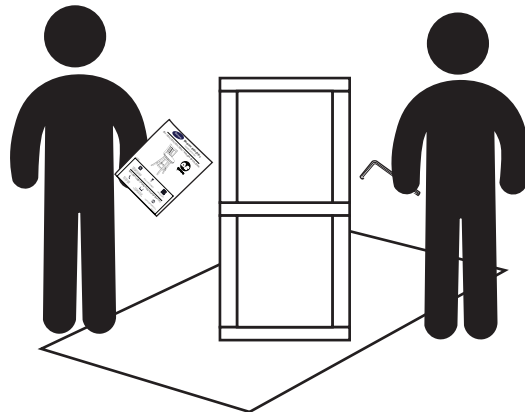
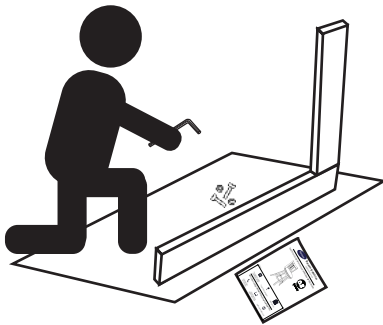
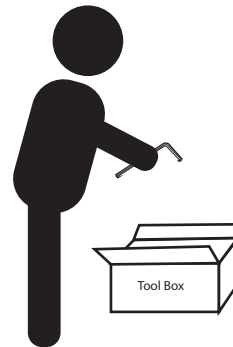
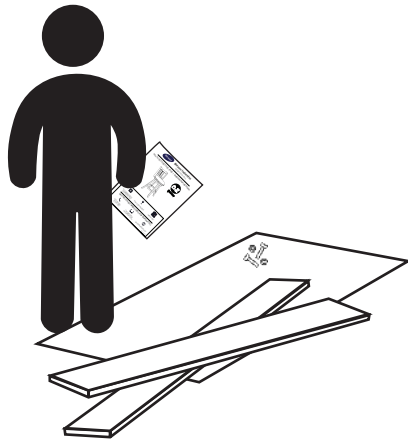
Philips screwdriver
not included.

Assembly And Care

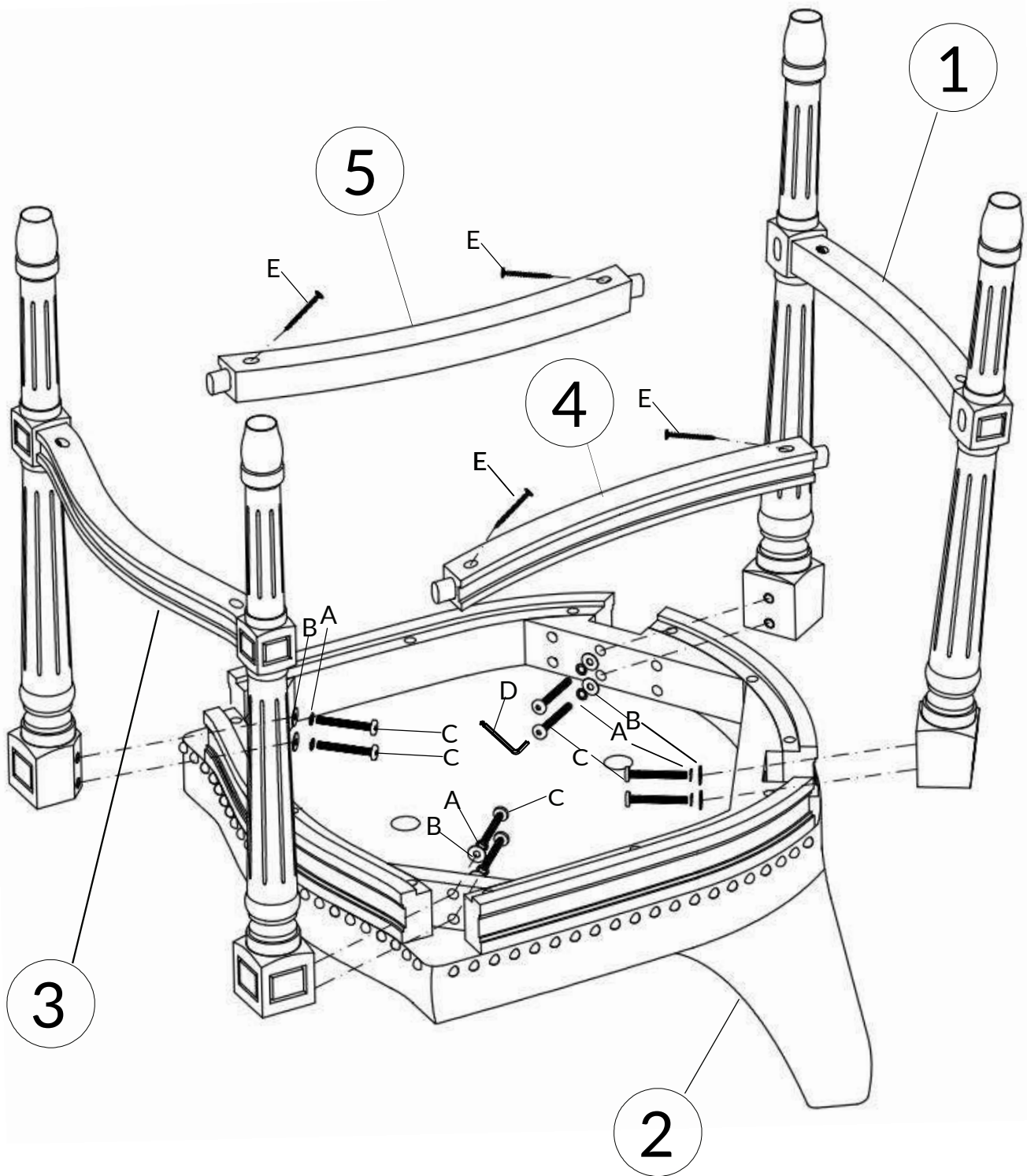
- All tools required for assembly are included unless noted.
- Prior to assembly, check for missing or damaged parts.
- Do not dispose of packing materials until assembly is completed.
- Assemble item on a soft, clean surface to prevent damage to the item.



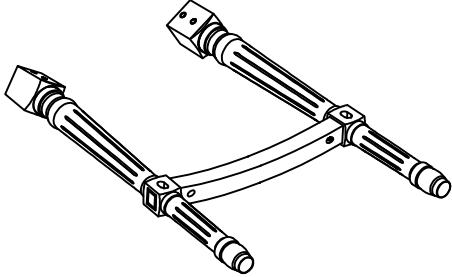
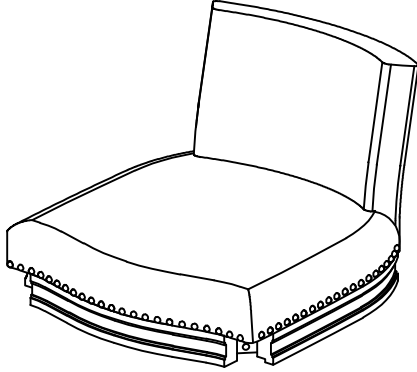
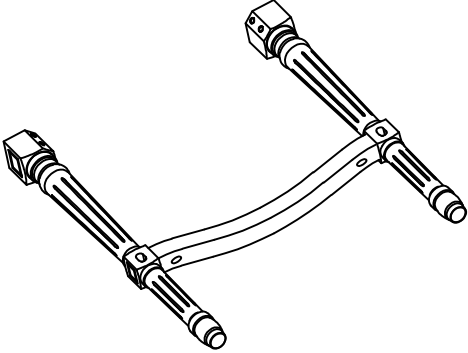
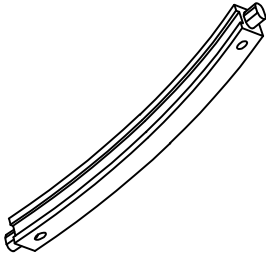
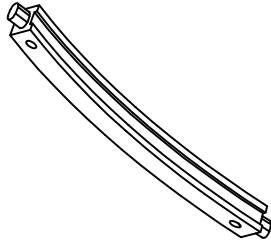
Locate the
HARDWARE PACK
which is attached to the
shipping carton with red
tape.



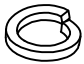
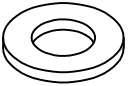
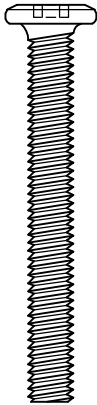
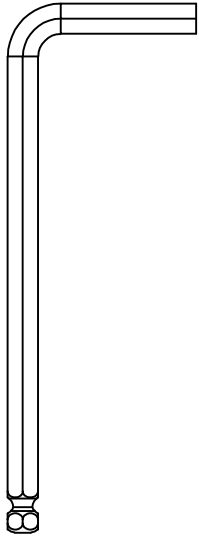
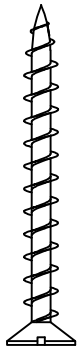
Assembly Overview



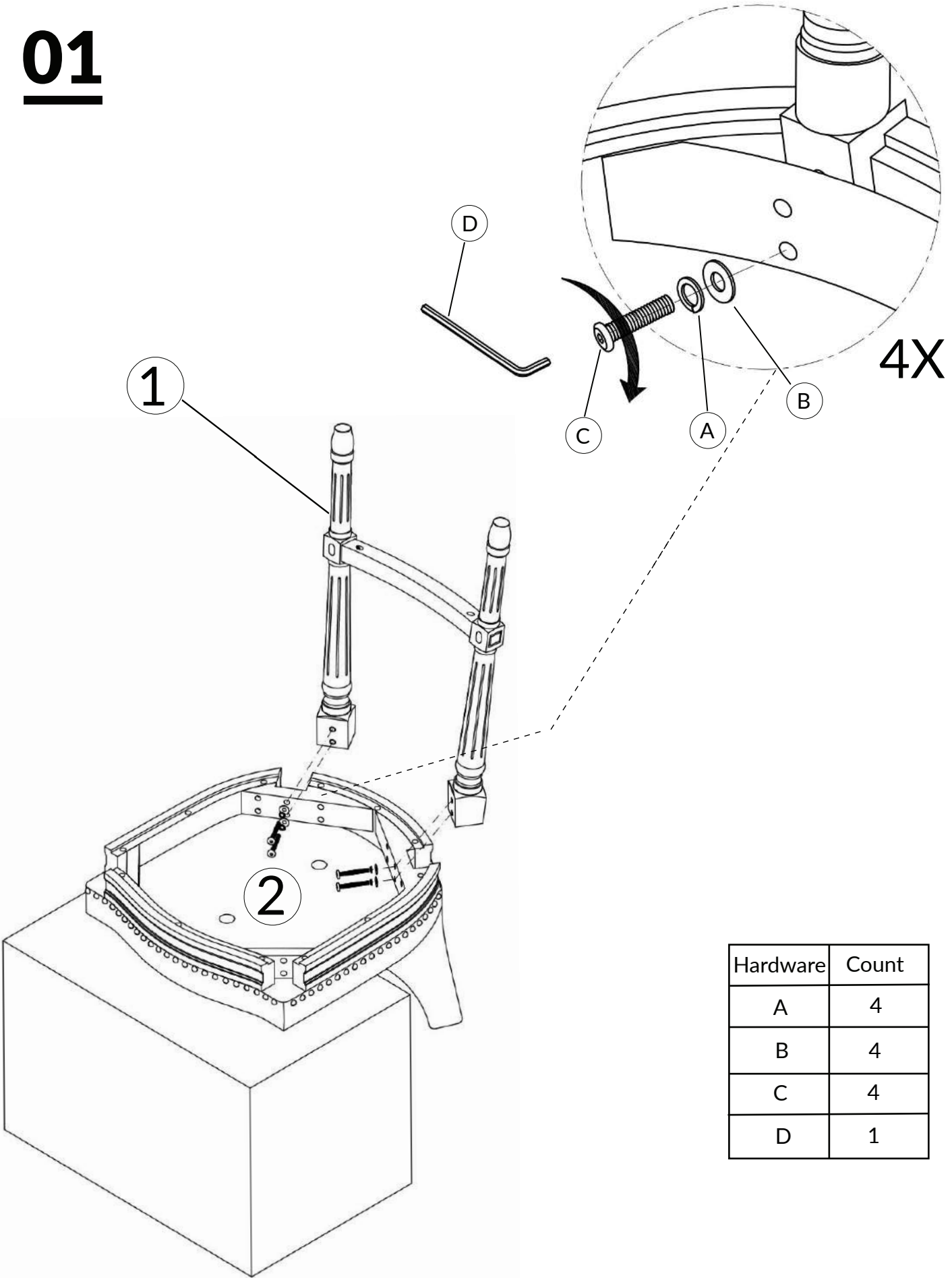
PARTS

<p>①(x1)</p>	<p>②(x1)</p>	
<p>Back Leg :</p> 	<p>Backrest and Seat Cushion :</p> 	
<p>③(x1)</p>	<p>④(x1)</p>	<p>⑤(x1)</p>
<p>Front Leg :</p> 	<p>Left Stretcher :</p> 	<p>Right Stretcher :</p> 

HARDWARE

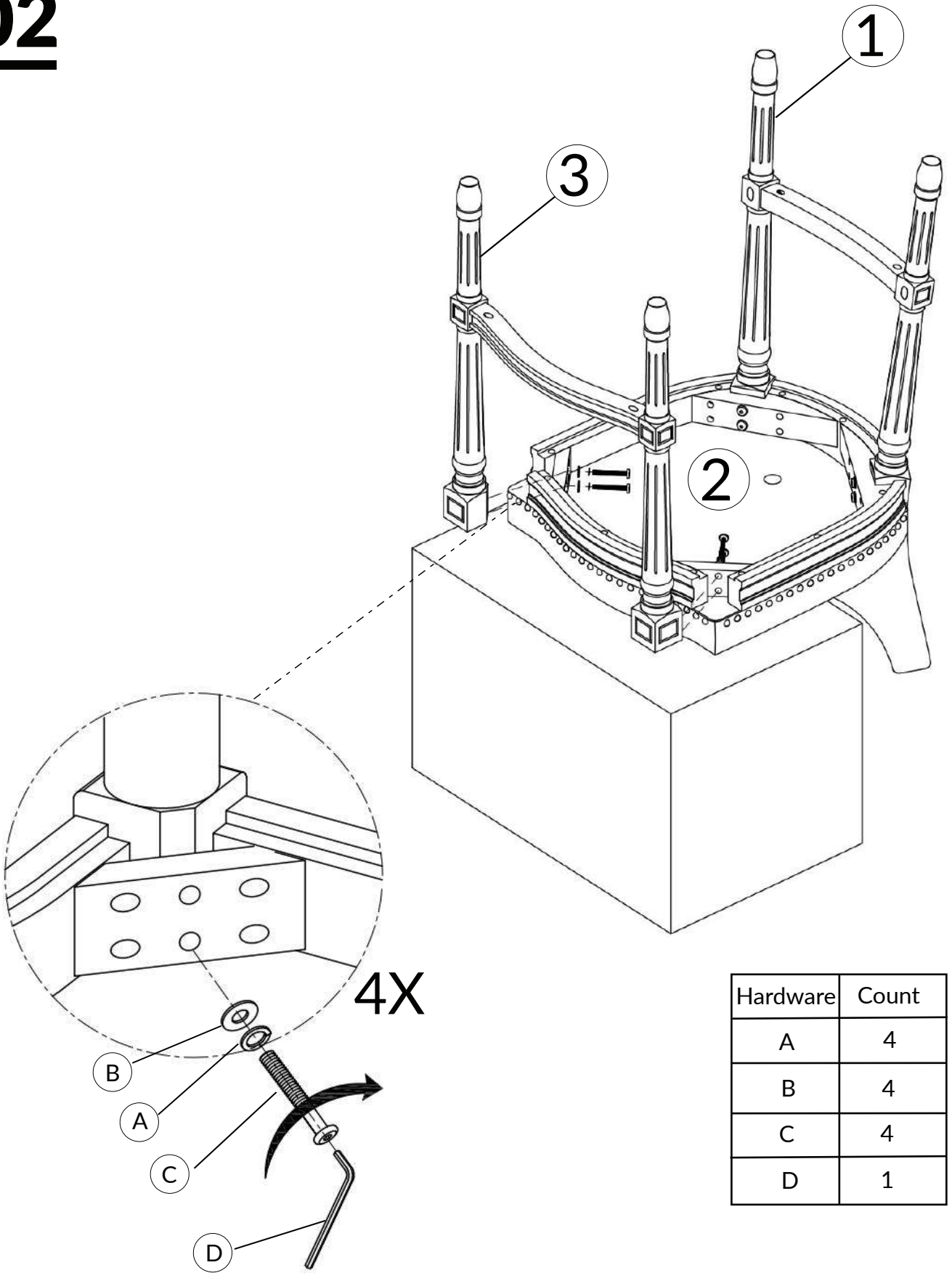
<p>Ⓐ(x8)</p>	<p>Ⓑ(x8)</p>	<p>Ⓒ(x8)</p>	<p>Ⓓ(x1)</p>	<p>Ⓔ(x4)</p>
				
<p>Spring Washer M6*10</p>	<p>Flat Washer M6*16</p>	<p>Bolt M6*50</p>	<p>Allen Wrench M4*100</p>	<p>Wood Screw M4*45</p>

01



DO NOT TIGHTEN BOLT COMPLETELY.

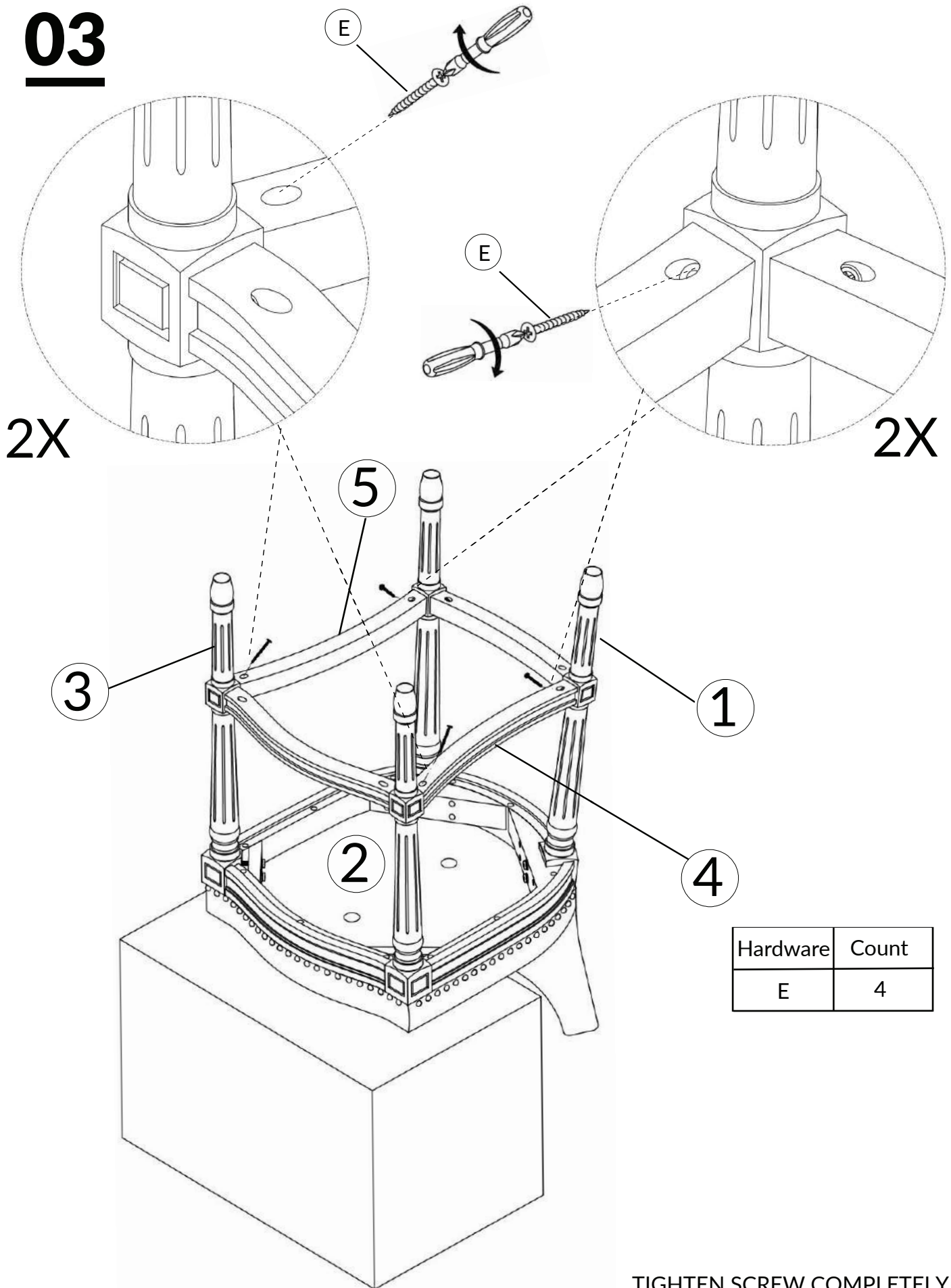
02



Hardware	Count
A	4
B	4
C	4
D	1

DO NOT TIGHTEN BOLT COMPLETELY.

03



Hardware	Count
E	4

TIGHTEN SCREW COMPLETELY



Weight Capacity

BE SURE TO CHECK ALL BOLTS ARE SECURELY TIGHTENED PRIOR TO USE.