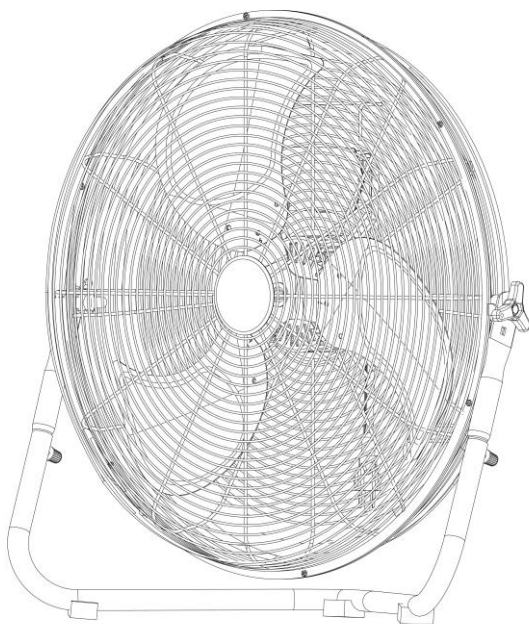




20" HIGH VELOCITY FAN



Model: ILG8F20

OWNER'S MANUAL

**PLEASE READ AND SAVE
THESE INSTRUCTIONS**

Read Instruction manual carefully before assembling or installing your fan. It is important that you observe all safety information to help prevent personal injury and/or property damage.

20" HIGH VELOCITY FAN

MODEL NO. : ILG8F20

Voltage Rating: 120VAC 60Hz

Power: 165W

CAUTION: Read and follow all instructions before operating fan. Do not use fan if any part is damaged or missing.

WARNING: To reduce the risk of fire or electrical shock, DO NOT use this fan with any solid state speed control device. This appliance has a 3-prong grounded plug that must be inserted into a matching outlet. To reduce the risk of electrical shock, this grounding plug must not be removed from the plug. Where a two-prong wall outlet is encountered, it must be replaced: contact a qualified electrician. DO NOT attempt to remove this safety feature. Use your fan only with adequate wiring that is up to Code. Connect to properly grounded outlets only.

INSTRUCTIONS FOR SAFE OPERATIONS

This product employs overload protection (fuse). A blown fuse indicates an overload or short-circuit situation. If the fuse blows, unplug the product from the outlet. Replace the fuse as per the user servicing instructions (follow product marking for proper fuse rating) and check the product. If the replacement fuse blows, a short-circuit may be present and the product should be discarded or returned to an authorized service facility for examination and/or repair.

- Always unplug unit for cleaning.
- Always unplug unit when not in use.
- Always unplug when moving unit from one location to another.

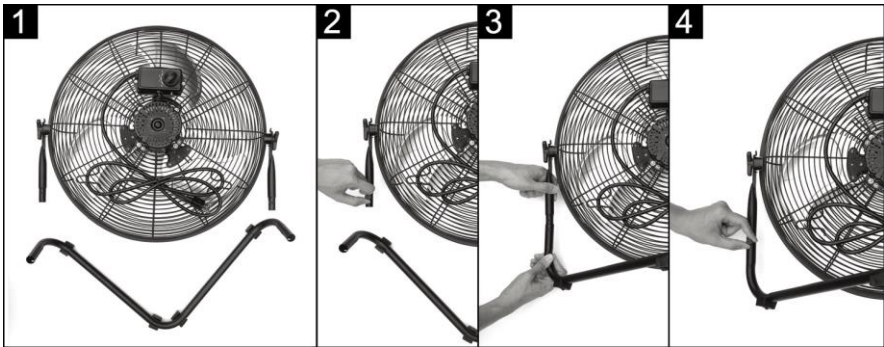
- Do not place foreign objects through guard when fan is in operation.
- Do not operate without fan guards properly locked.
- Do not use this fan with an extension cord.
- Do not use this fan near windows. Rain and moisture may create an electrical hazard.
- Do not place fan or fan parts near an open flame, cooking or other heating appliance.
- Do not operate this unit with a damaged cord or plug, especially when this unit has previously malfunctioned, or been dropped or damaged.
- Make sure fan is on a stable, flat surface when in operation.
- Close supervision is necessary when this unit is used by or near children.

UNPACK YOUR FAN AND CHECK THE CONTENTS

- Fan Head With Two Screws & Two Adjustment Knobs
- Supporting Stand
- Wall Bracket
- Instruction Manual

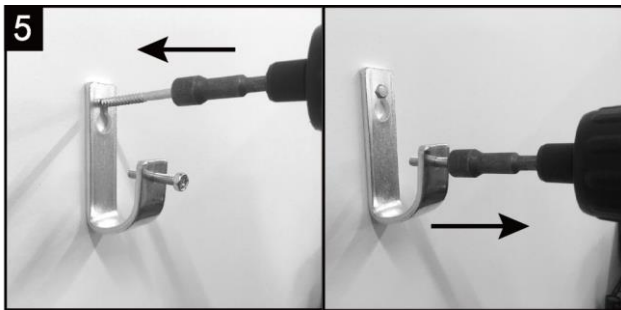
ASSEMBLY INSTRUCTIONS

1. Please put the fan on a flat and stable surface as shown in the picture.
2. Remove the two knobs from the steel tube attached to the fan head, save them for step 4.
3. Align the hole in the stand with the hole in the steel tube attached to the fan head.
4. Carefully insert the knobs from step 2 into the holes and tighten them. Please be sure to re-tighten the adjustment knobs to avoid swaying of the fan head.



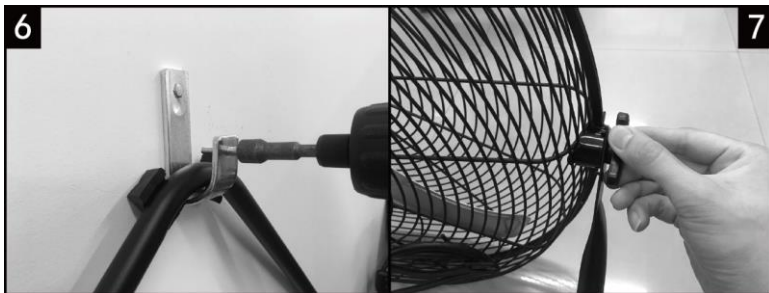
(If you need the fan for wall function, follow up Step 5 to 7.)

5. Mount the wall bracket with a $\frac{1}{4}$ " diameter by 2- $\frac{1}{2}$ " long lag bolt provided. Loosen set screw on the wall bracket, save it for step 7.



6. Hold fan in an upright position, place stand in wall bracket hook so that rubber feet on the stand rest against the wall. Tighten back the set screw from step 6 to lock the stand in position.

7. Tilt fan head to desired angle.



OPERATING INSTRUCTIONS:

1. Set fan on a dry, stable and flat surface.
2. Connect the plug to any standard 120-volt AC outlet. Caution: Make sure the Speed Control is in the OFF position.
3. Change the setting on the speed control to the desired operating speed --- OFF"0", LOW"1", MEDIUM"2" or HIGH"3".
4. To change the tilt -angle of the Fan Head, loosen the Tilt Adjustment Knob on the side of the Grille, tilt the Fan Head to the desired angle and tighten the knob. The knobs on both sides are tools for tilt adjustment.

Note: It is normal for the motor to feel warm to the touch during operation. The motor is thermally protected and will automatically shut off when it overheats for any reason. If this happens, immediately disconnect the fan from the power outlet. The motor bearings are permanently lubricated at the factory and do not require any additional lubrication.

REPLACING PLUG FUSE

When the fuse in the power cord blows, please replace the fuse by following these steps:

1. Disconnect the plug from the wall outlet. Do not unplug by pulling on cord. Then slide open the fuse access cover on top of attachment plug towards blades, as shown in Figure 1.
2. Remove the fuse carefully using a flat head screwdriver, as

shown in Figure 2.

3. Replace the fuse only with 5 Amp, 125 Volt fuse, as shown in Figure 3. (You may purchase a replacement fuse from a local hardware store).
4. Slide the fuse access cover on top of attachment plug, as shown in Figure 4.



Figure 1



Figure 2



Figure 3



Figure 4

CLEANING

WARNING: Unplug the fan from the wall outlet before cleaning. After cleaning, any safety device (including grills and blades) must be reinstalled or remounted as previously installed.

Use soft damp cloth then wipe with dry cloth. Do not use harmful cleaners. Do not bend the blades.

Wash guards and blades with water and a soft brush. Avoid harsh chemical cleaners. **DO NOT IMMERSE MOTOR IN WATER.** Allow fan to dry completely before use.

WARNING

This appliance is not intended for use by persons (including children) with reduced physical, sensory or mental capabilities, or lack of experience and knowledge, unless they have been given supervision or instruction concerning use of the appliance by a person responsible for their safety.

WARRANTY

This fan comes with a ONE-YEAR LIMITED COMPONENT WARRANTY. If your fan does not appear to be working properly, please contact our service center by calling 1-800-317-1688. Prior to your call, we encourage you to visit our website www.ilivingusa.com for troubleshooting tips and service instructions if needed.

Warranty Information

Register your product at our website:



Or visit iLivingUSA.com/register-product

Feedback

Love it? Help us make the product more for you.



Let us know with a customer review.

Please visit: <https://www.amazon.com/review/review-your-purchases#>

At iLiving USA, we are committed to bringing top quality products to our customers.

iLIVING USA
9293 Beatty Dr,
Sacramento, CA 95826
Tel: 1-800-317-1688
Email: service@ilivingusa.com



Like us on Facebook: <https://www.facebook.com/ilivingusa/>



Follow us on Twitter: @iLIVINGUSA

Check out our website: www.ilivingusa.com