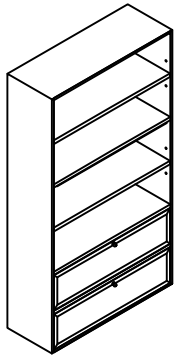


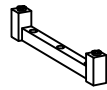
ASSEMBLY INSTRUCTION

MODEL: MILLIE BOOKCASE

Components



A Cabinet Body
x1



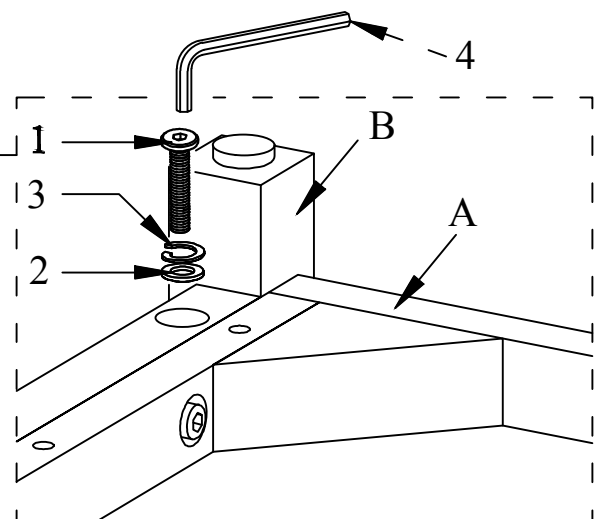
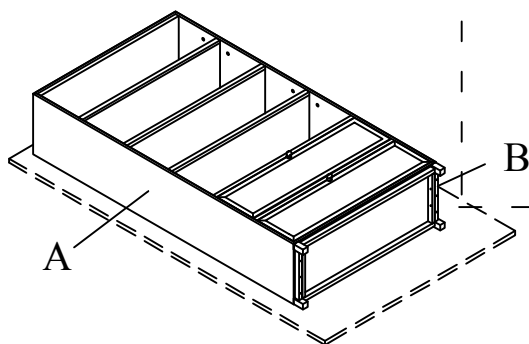
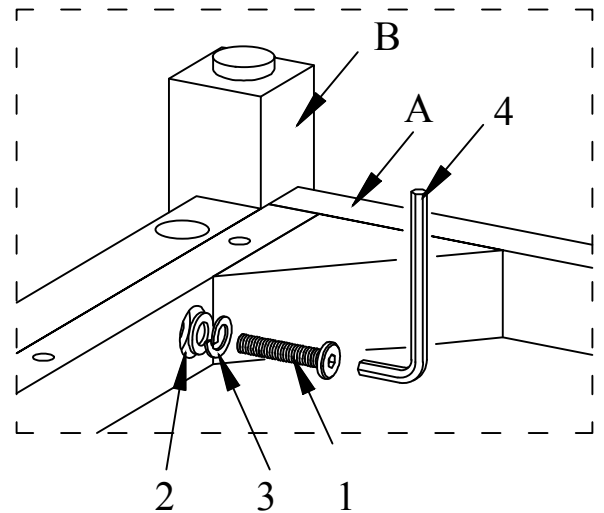
B Side Leg
x2

HARDWARE LIST				
NO	DESCRIPTION		QTY	
1		Allen bolt	5/16"x1-3/4"L	10pcs
2		Flat washer	5/16"x19mm	10pcs
3		Lock washer	5/16"	10pcs
4		Allen Key	5/16"	1pc
5		Tilt kit braket		2pcs

Assembly Instruction

Note:

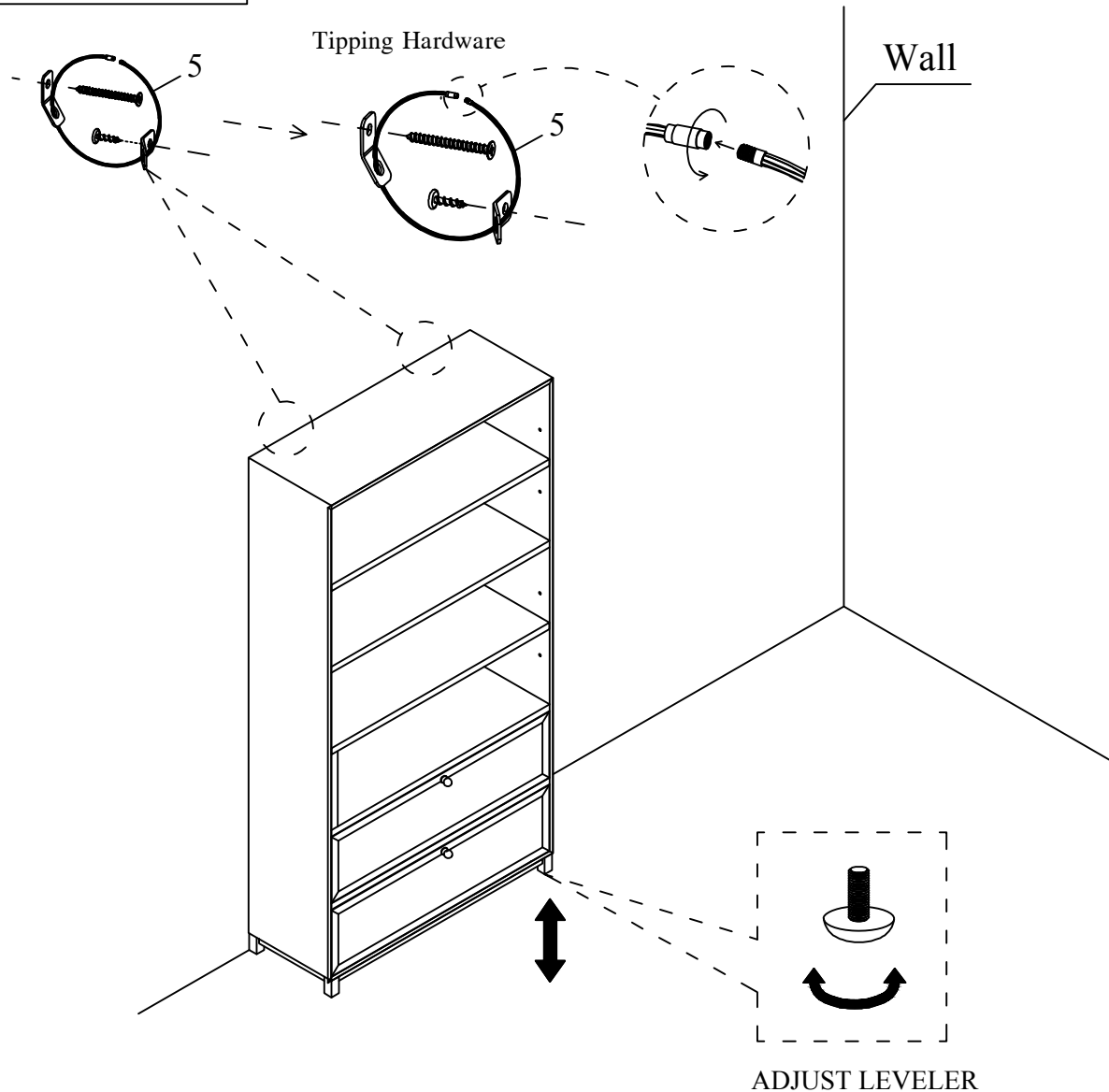
The floor must be covered with protective material so that the table top does not touch the floor directly.



ASSEMBLY INSTRUCTION

MODEL: MILLIE BOOKCASE

REMARK: There is a tip restraint kit provided on the back of this product please read the direction thoroughly and install immediately



Adjusting Floor Levelers

Your furniture has been expertly crafted and pre-adjusted by professionals. However, slight shifts can occur during transportation. If you notice that the drawers are not perfectly aligned or the furniture wobbles, a quick adjustment can help ensure stability and a seamless look.

Adjust the Floor Levelers

Check for Stability – Place the furniture in its final position on a level surface. If it wobbles or doesn't sit evenly, the floor levelers need adjusting.

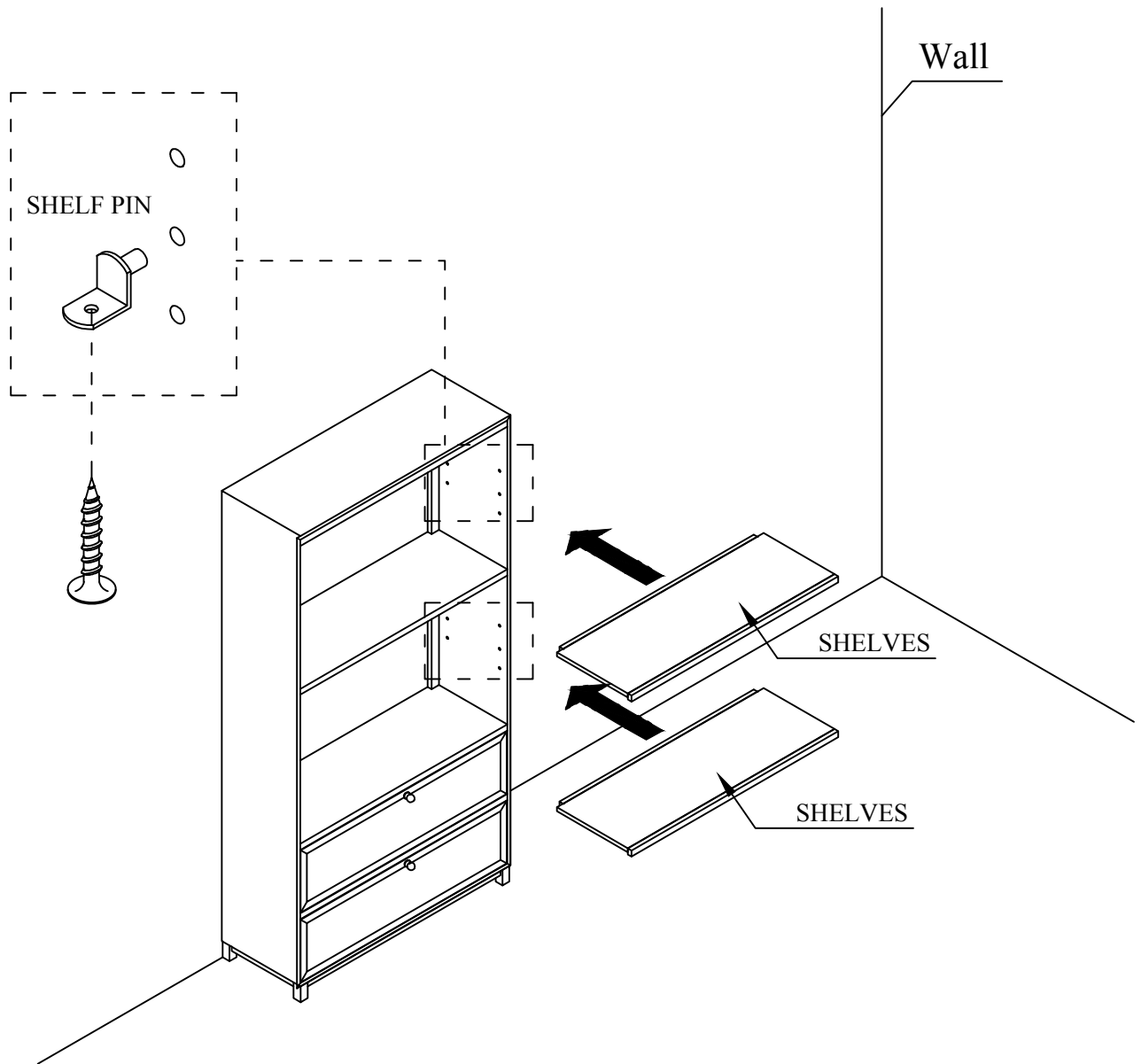
Locate the Levelers – These are small adjustable feet found at the bottom corners of your furniture.

Adjust as Needed – Using your hand or a wrench, turn the levelers clockwise to raise or counterclockwise to lower the furniture. Make small adjustments and check stability after each turn.

If you need further adjustments, repeat the process in small increments.

ASSEMBLY INSTRUCTION

MODEL: MILLIE BOOKCASE



The shelves can be adjustable by lifting the shelf up and removing the shelf pin, then placing the shelf pins into the upper hole or lower holes screw.