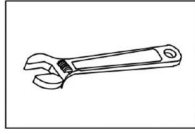
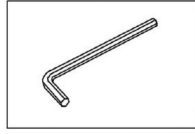


Two-Handle Widespread Bathroom Faucet Installation

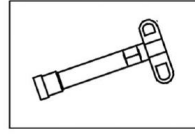
INSTALLATION MANUAL Tools You Will Need :



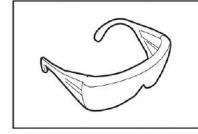
Adjustable wrench



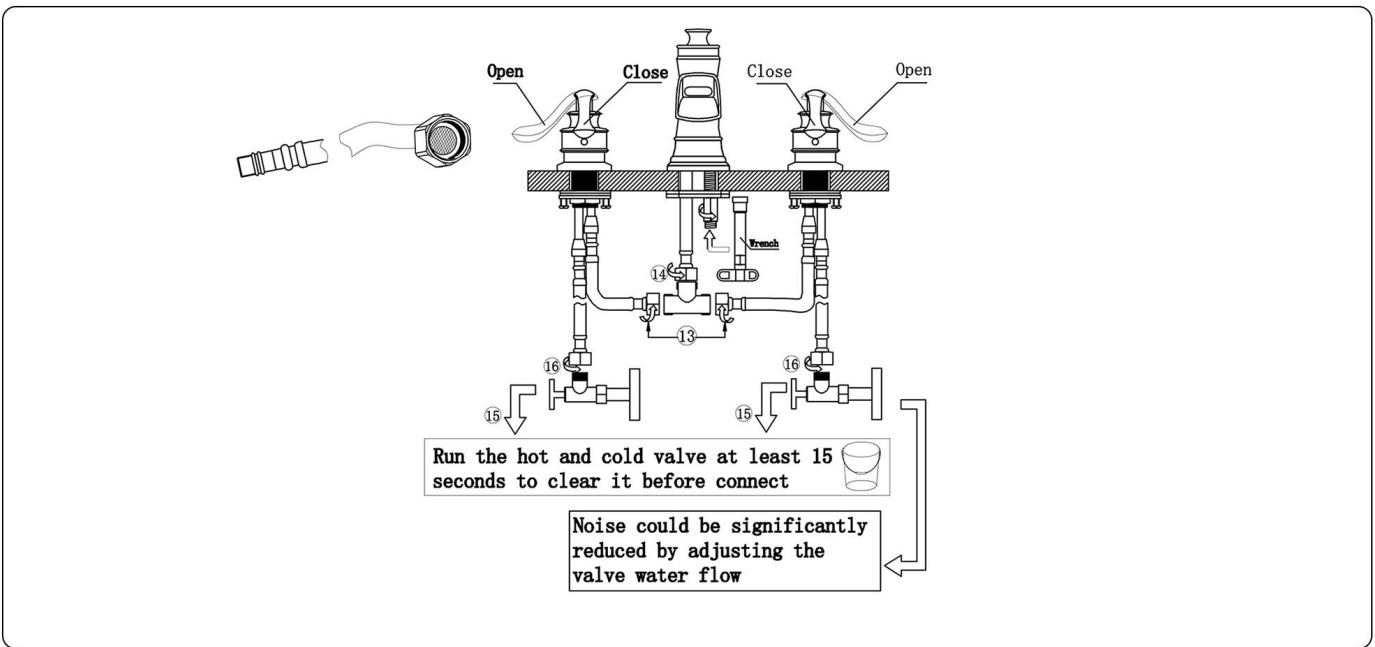
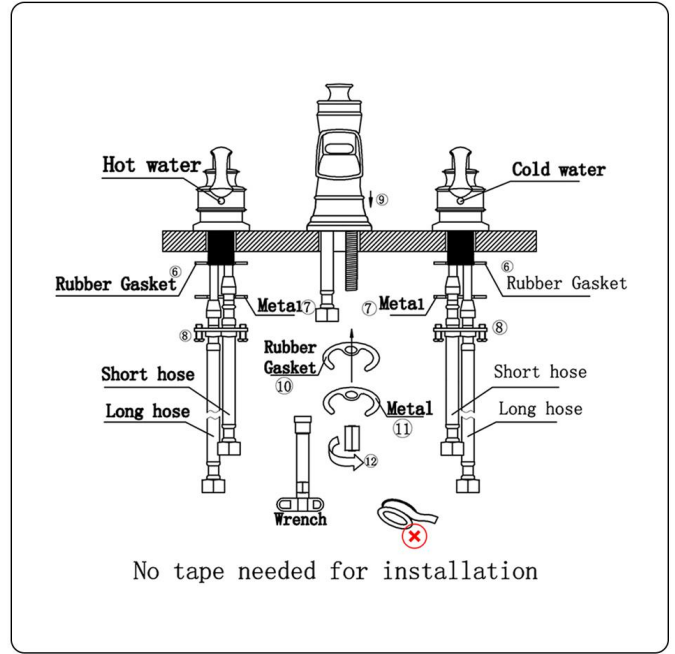
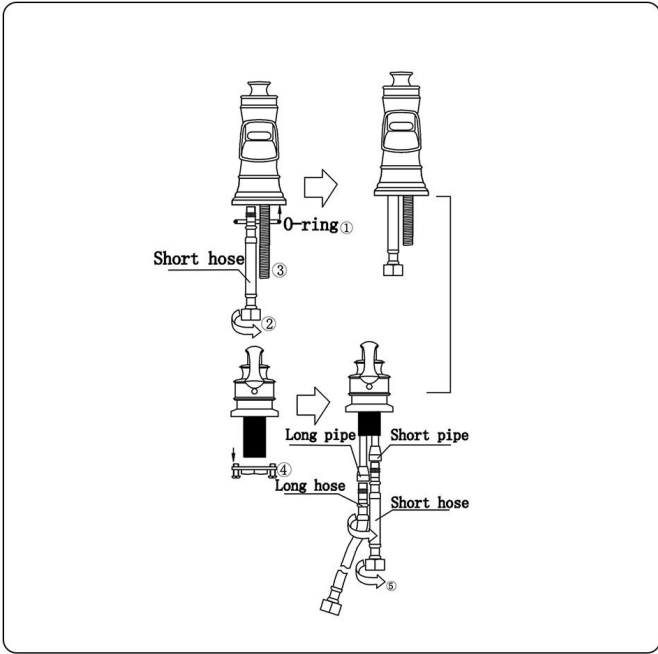
Hexagon wrench



wrench



glasses



Notes before installation:

- 1 . Please check that all components are present.
- 2 . Before installation ensure that all feed lines are clear of debris and on/off valve is present .
- 3 . Ensure water pressure is between 20–125 PSI (includes combination of hot and cold feed lines) .
- 4 . Pictures in the manual are general in content and may not represent exactly your purchased faucet . If you are having difficulties please contact a professional plumber .
- 5 . If you will be away from home for an extended period you should shut off the main water supply .

Daily maintenance

- 1 . Use a soft cloth and vinegar to remove hard–water spots
- 2 . Check aerator (if present) regularly for calcium build up are when water stream is not optimum.
- 3 . DO NOT use caustic cleaning products as the use will break down finish and will void the product warranty .
- 4 . Acceptable cleaners include vinegar or mild non–abrasive liquid detergents.
- 5 . If the water pressure appears to be less than optimum remove ,inspect , clean or replace aerator .