

Assembly Instructions

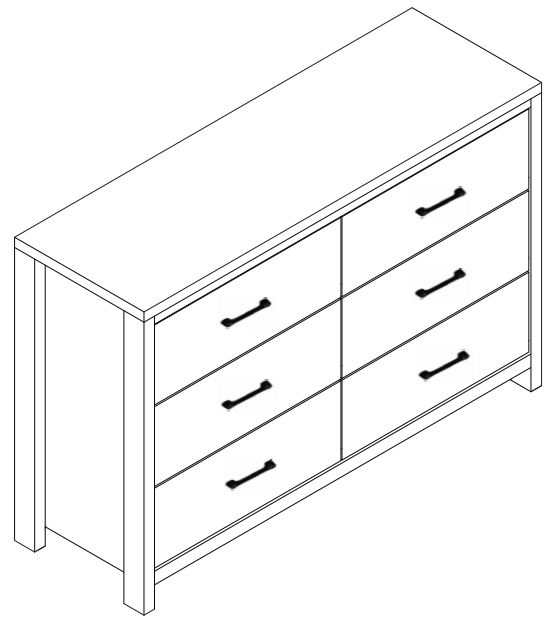
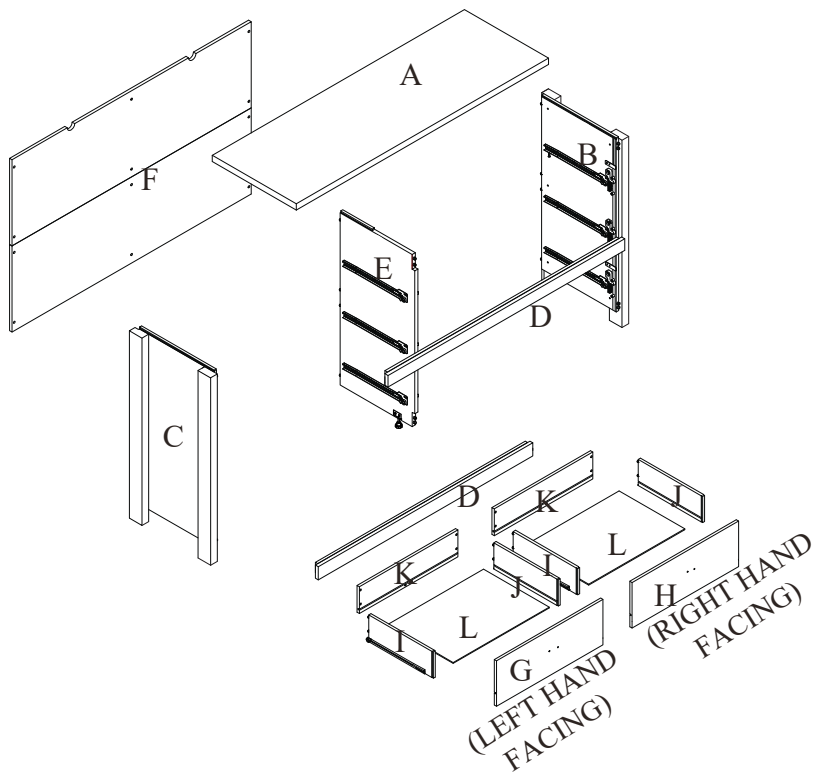


SHOULD YOU HAVE ANY QUESTIONS REGARDING THE ASSEMBLY OR PARTS OF YOUR NEW SLIDE

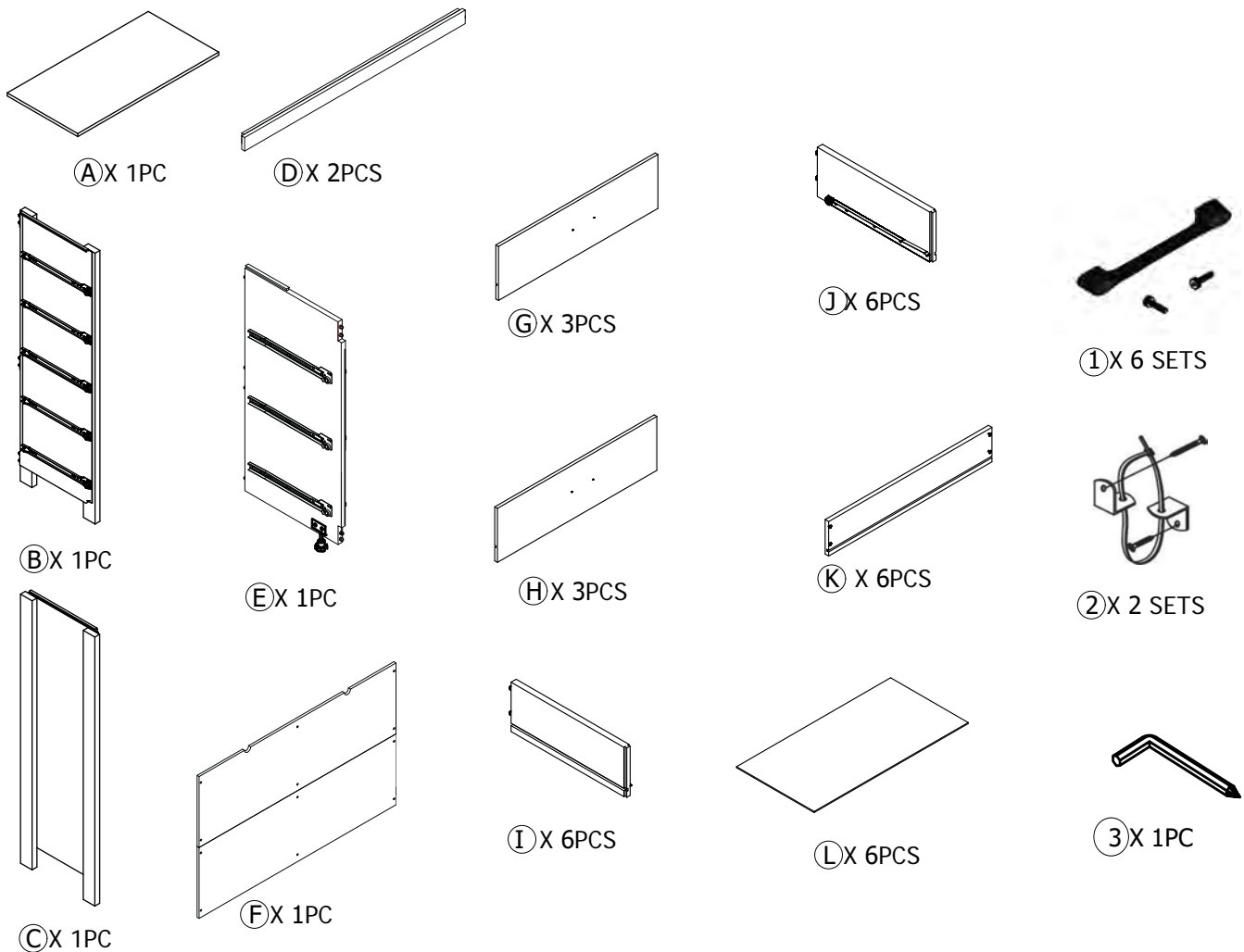
Perfect Fit Furniture Internationally Patented

offers patented furniture solutions to the consumer with simple assembly & innovative features. are changing the landscape of affordable storage furniture and breaking barriers for consumer reception of RTA/KD items. is made in state of the art Malaysian manufacturing facilities by engineering teams that are both creative and exactly precise. items are affordable and accessible to all customers regardless of assembly acumen or income level.

ASSEMBLY INSTRUCTIONS



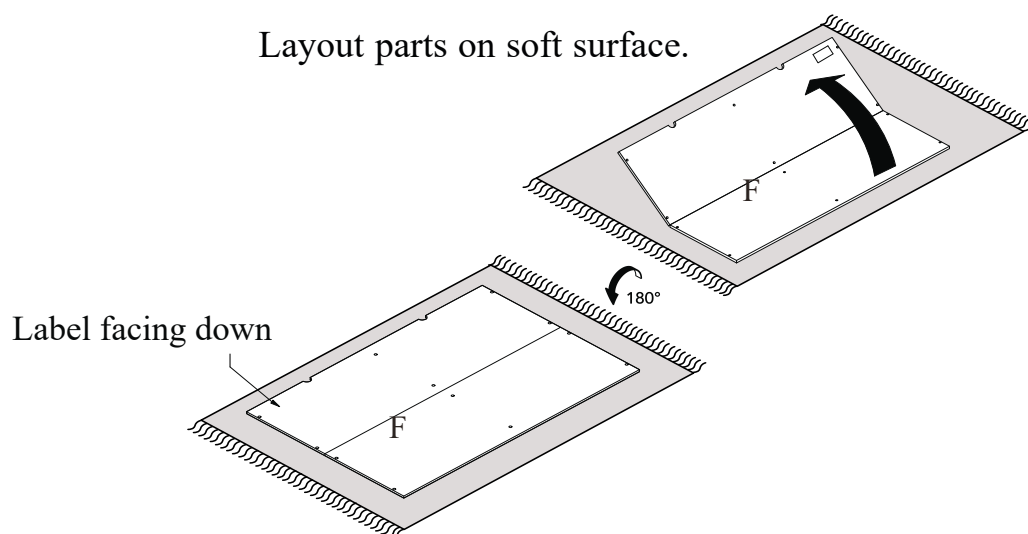
COMPLETED ASSEMBLY



ASSEMBLY INSTRUCTIONS

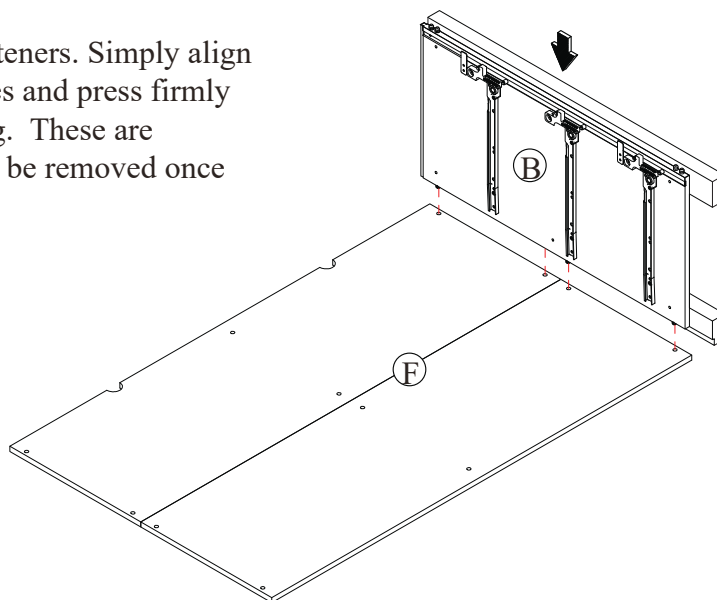
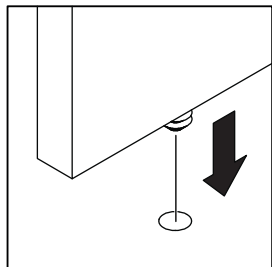
1

Layout parts on soft surface.



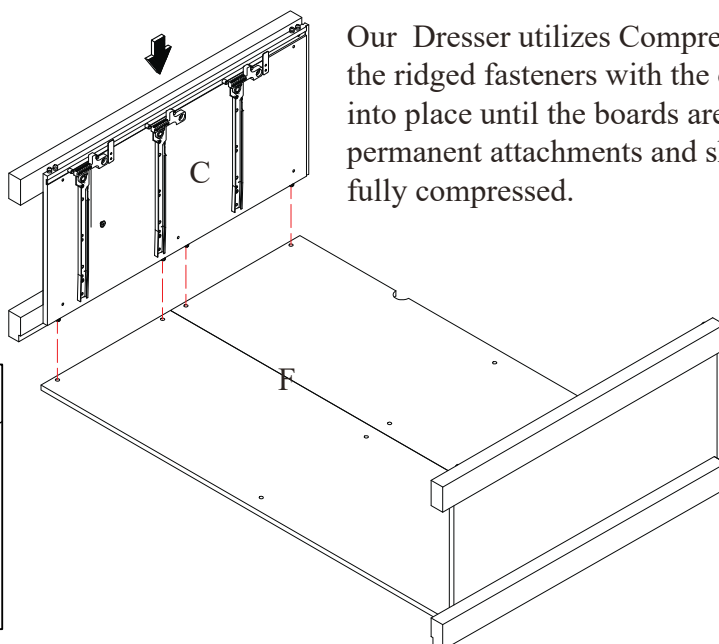
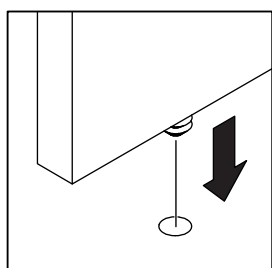
2

Our Dresser utilizes Compress Fit fasteners. Simply align the ridged fasteners with the open holes and press firmly into place until the boards are touching. These are permanent attachments and should not be removed once fully compressed.



3

Our Dresser utilizes Compress Fit fasteners. Simply align the ridged fasteners with the open holes and press firmly into place until the boards are touching. These are permanent attachments and should not be removed once fully compressed.



4

Diagram 4 shows the initial assembly of the side panels (B and C) and the internal divider (E). The panels are aligned with the pre-drilled holes in the frame. A small inset shows a close-up of a screw being inserted into a hole.

5

Diagram 5 shows the next step, where the top panel (D) is being attached to the side panels (B and C) and the internal divider (E). The panel is aligned with the pre-drilled holes, and a screw is shown being inserted.

6

Diagram 6 shows the installation of the bottom panel (A). The panel is aligned with the pre-drilled holes in the side panels (B and C) and the internal divider (E). A small inset shows a close-up of a screw being inserted into a hole.

7

Diagram 7 shows the final assembly of the cabinet. The bottom panel (A) is attached to the side panels (B and C) and the internal divider (E). The cabinet is now complete.

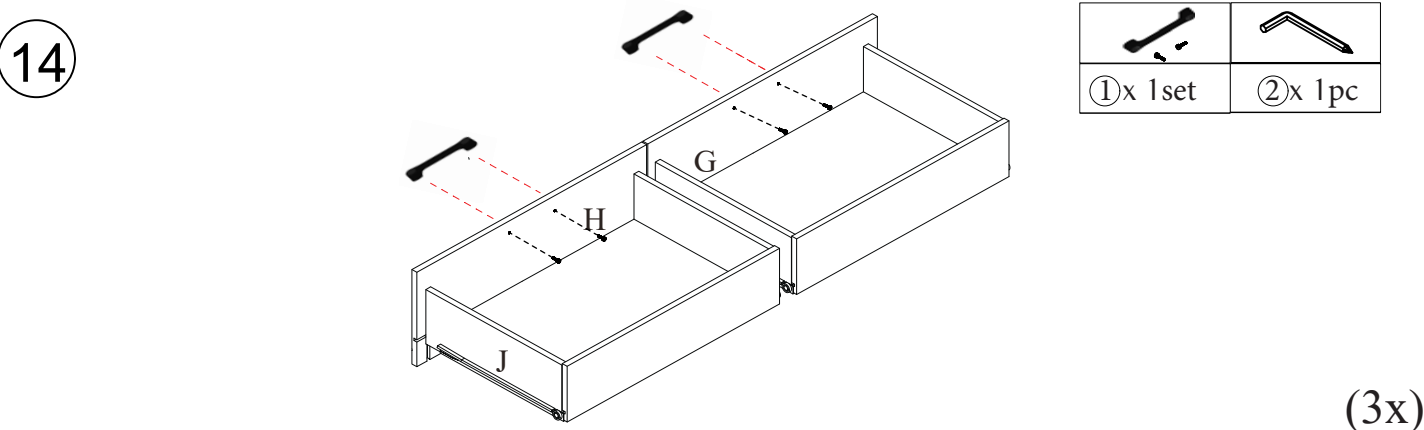
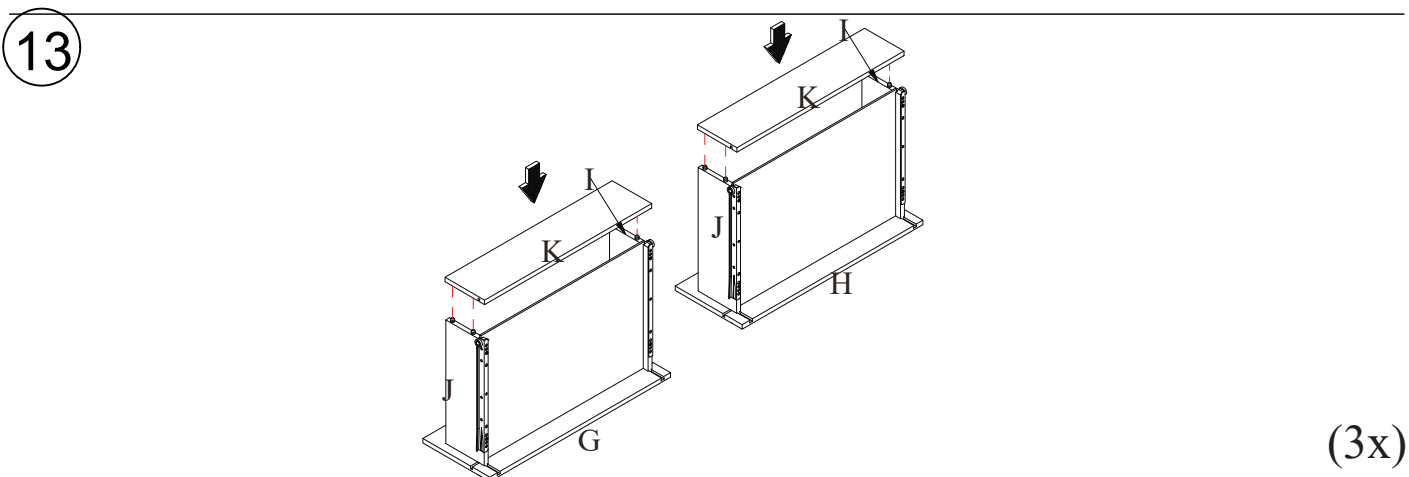
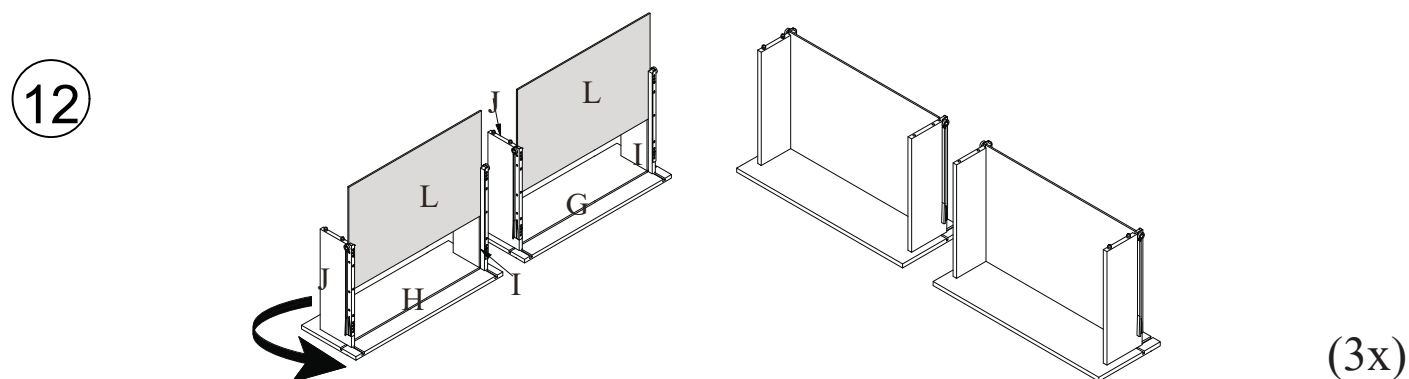
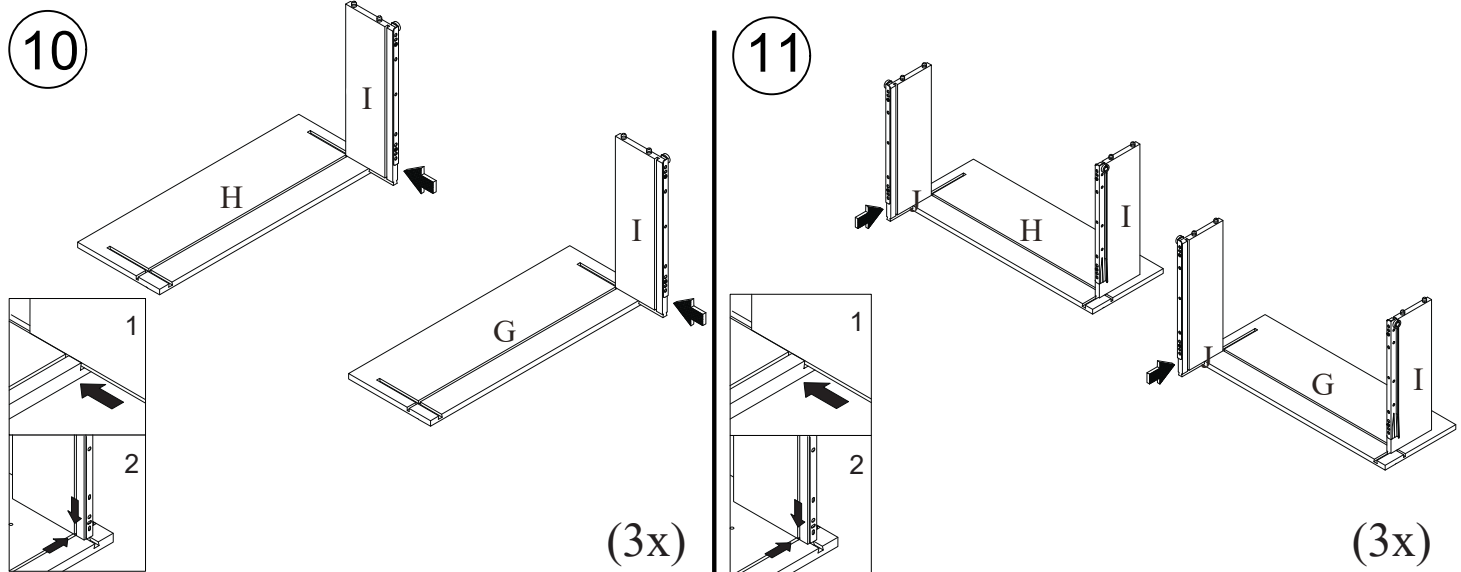
8

Diagram 8 shows the final assembly of the cabinet. The bottom panel (A) is attached to the side panels (B and C) and the internal divider (E). The cabinet is now complete.

9

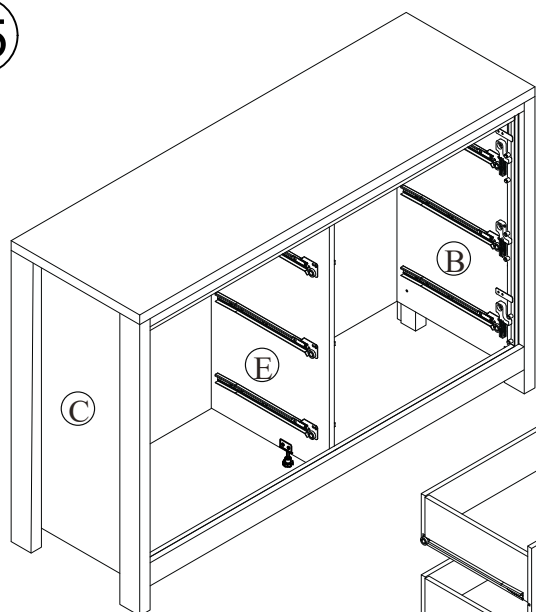
Diagram 9 shows the final step of the assembly, where the assembled unit is rotated 90 degrees to its final position. The rotation is indicated by a curved arrow labeled 90°.

ASSEMBLY INSTRUCTIONS



ASSEMBLY INSTRUCTIONS

15

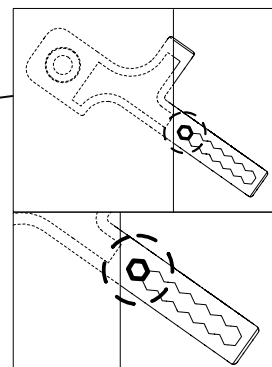
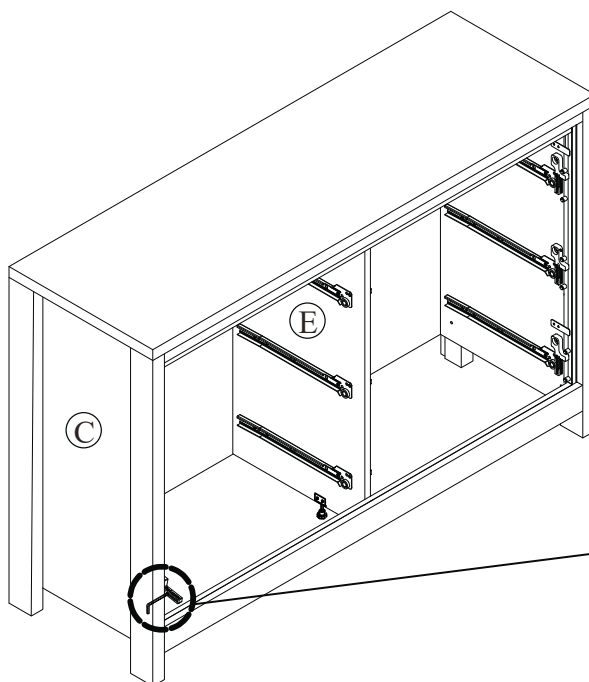
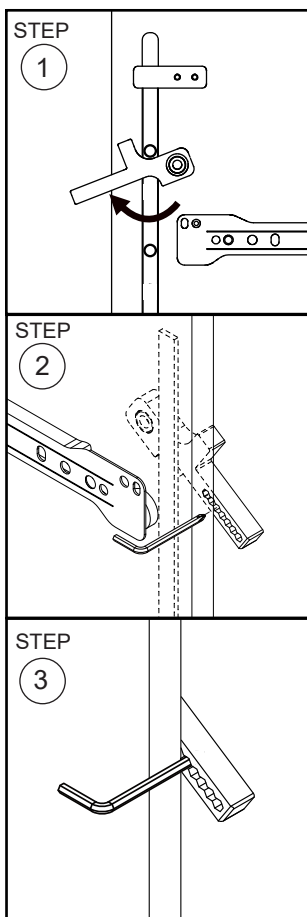


Insert drawers G then H starting with both bottom drawers first, followed by both middle, & then top drawers.

16

Interlocking Drawer System - Safety feature designed to allow only one drawer to be opened at a time.

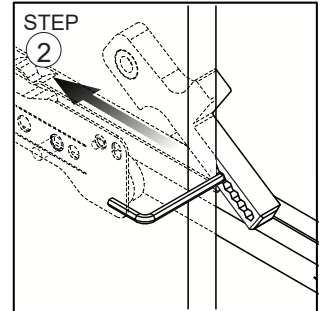
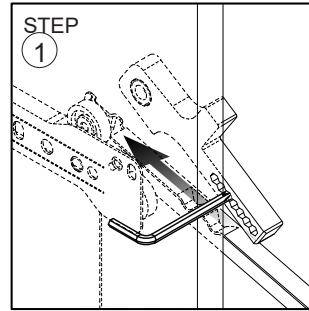
When inserting each drawer, use the Allen wrench (part 3) to lift the interlock upwards and align the drawer rails into place.



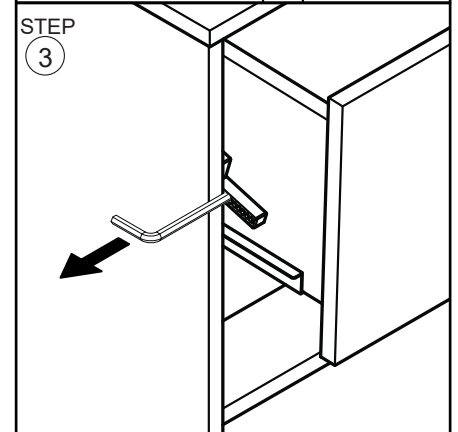
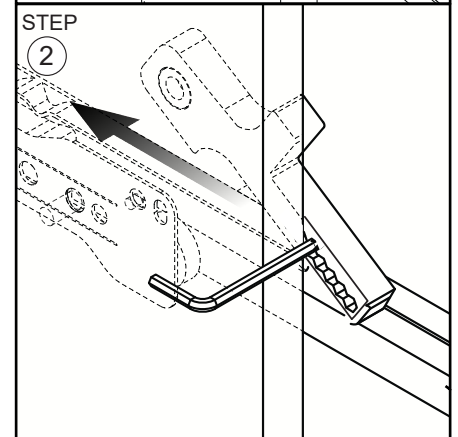
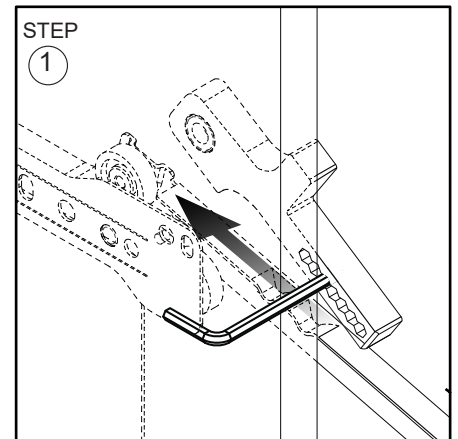
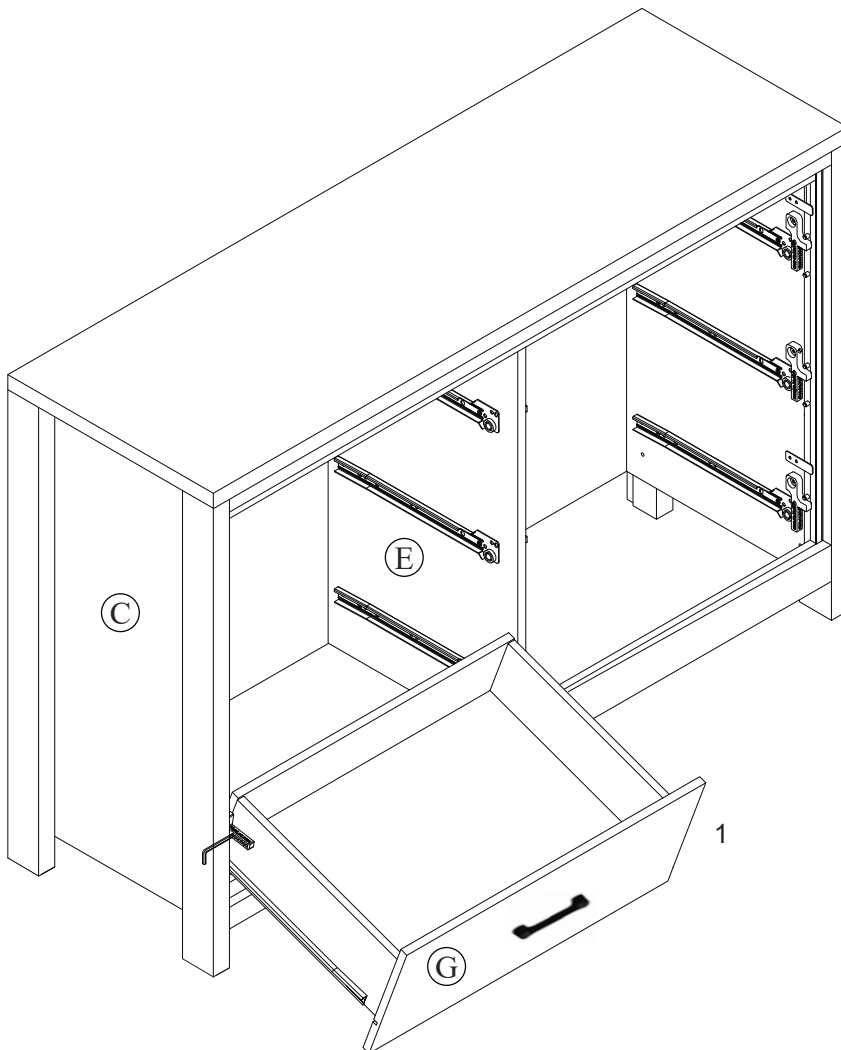
ASSEMBLY INSTRUCTIONS

17

Interlocking Drawer System - Safety feature designed to allow only one drawer to be opened at a time.

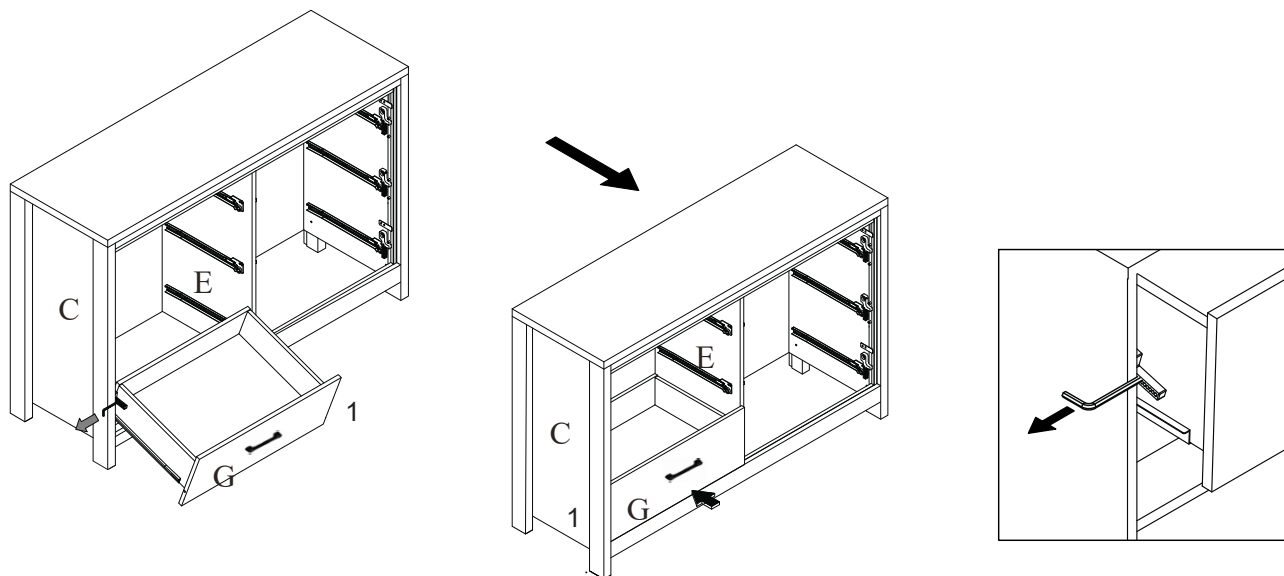


When inserting each drawer, use the Allen wrench (part 3) to lift the interlock upwards and align the drawer rails into place.

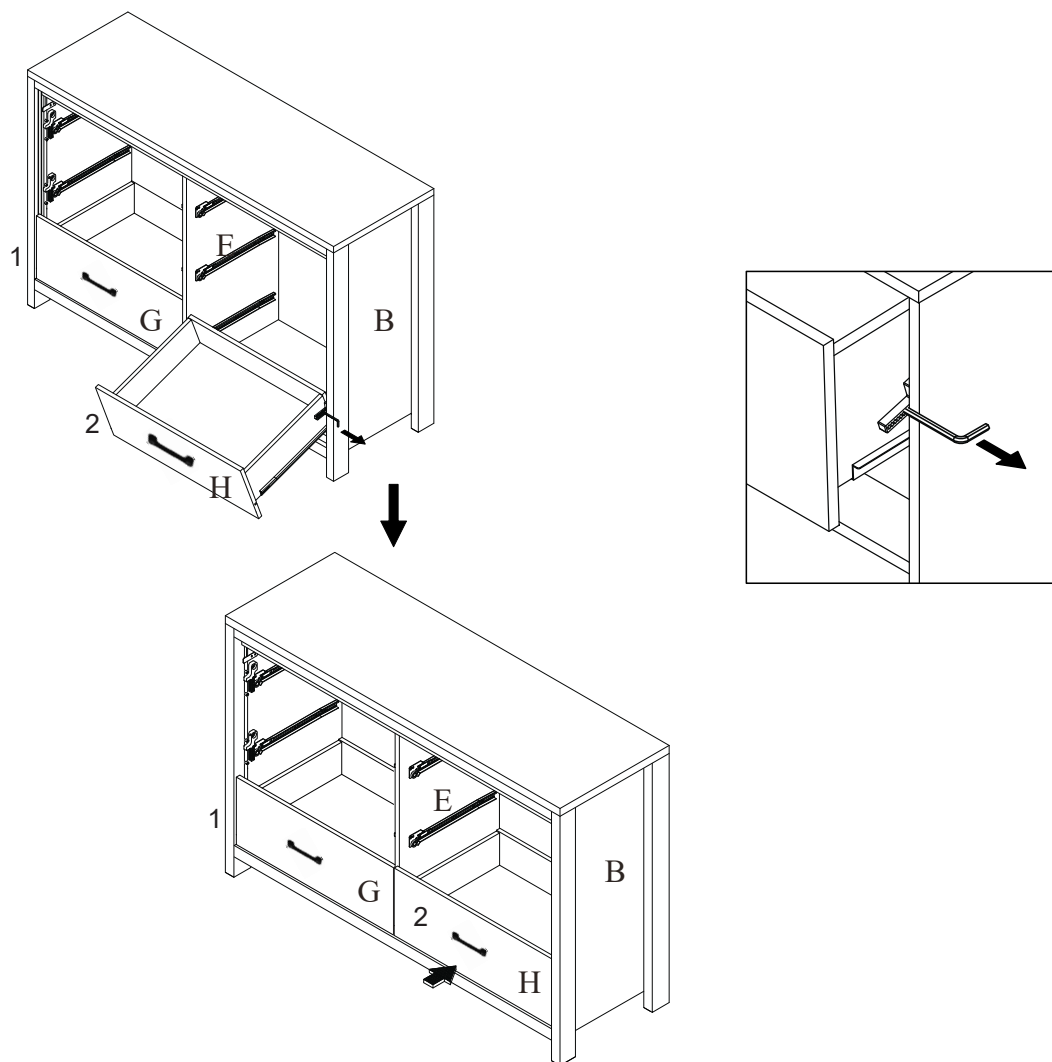


ASSEMBLY INSTRUCTIONS

18



19



ASSEMBLY INSTRUCTIONS

- 20 Repeat step 16 to 19 for each of the remaining drawers.

