

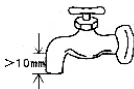
3. Installation of the water inlet pipe

Before installing the water inlet hose, first confirm the type of faucet. Then proceed with installation according to the diagram. After installation, ensure all connections are securely tightened without any looseness. Finally, turn on the faucet to check for leaks. It is recommended that users prioritize selecting a qualified dedicated washing machine faucet. If using a standard faucet, its water outlet must be larger than 10mm (requires compatible universal adapter). If using countertop faucets (requires compatible metal adapter).



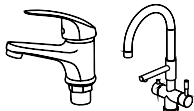
Washing machine
-specific faucet

Type 1



standard faucet

Type 2

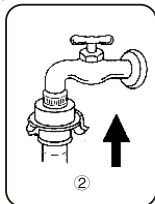
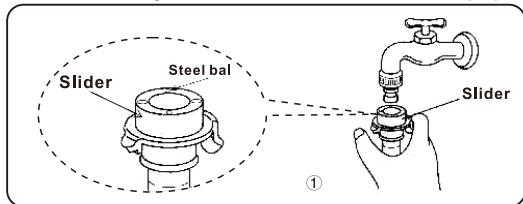


Countertop faucet

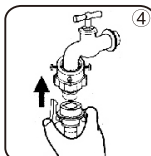
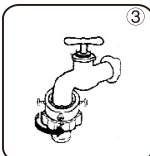
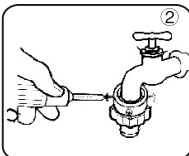
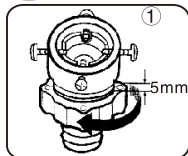
Type 3

Type 1: Connection between the water inlet hose and the dedicated washing machine faucet

Press down the slider (exposing the steel ball), vertically sleeve the water inlet hose onto the dedicated washing machine faucet. Release the slider once properly positioned.



Type 2: Connection between the water inlet hose and the standard faucet



Type 3: Connection between the water inlet hose and the Countertop faucet

fine thread
outer diameter 23-24mm
inner diameter 21-22mm



23-24mm
use outer fine thread



21-22mm
use inner fine thread



**Then connect the water inlet
pipe of the washing machine**