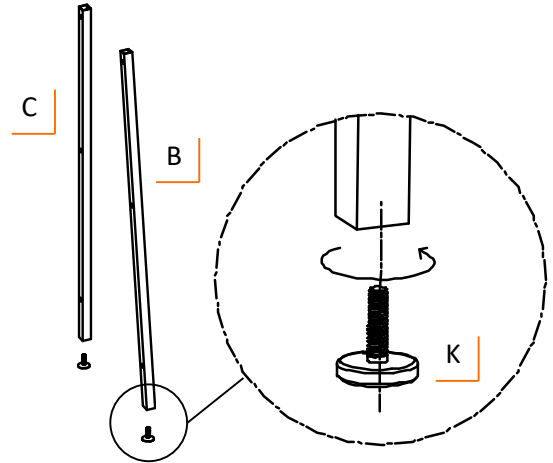
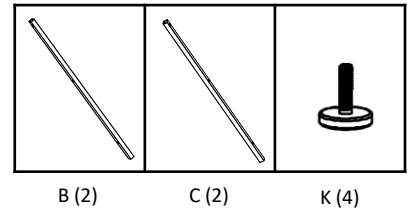


ASSEMBLY INSTRUCTIONS

STEP 1

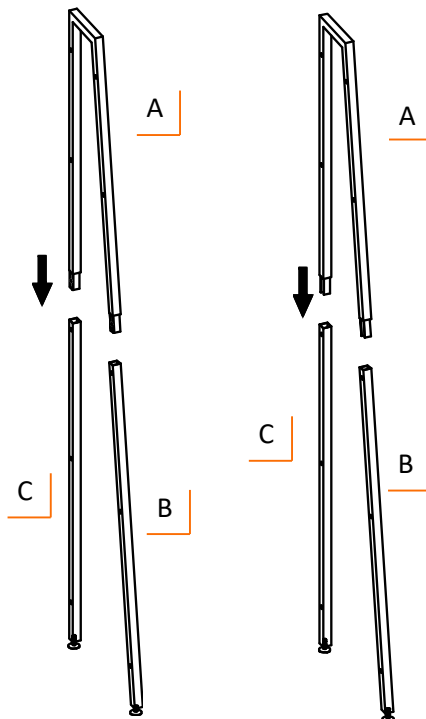
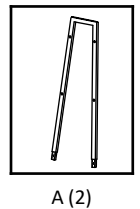
Screw FEET LEVELER (K) into FRONT & BACK LEG (B & C). Turn clockwise to screw in place.



STEP 2

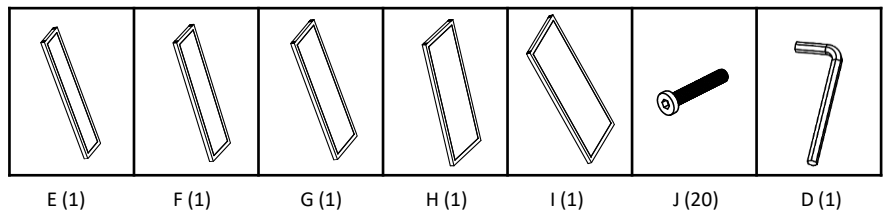
Connect TOP SIDE FRAME (A) with FRONT LEG (B) and BACK LEG (C) on its open end. Push the small metal piece all the way into FRONT & BACK LEG (B & C).

Do this for both TOP SIDE FRAME (A).



ASSEMBLY INSTRUCTIONS

STEP 3



Lay SIDE FRAMES (A + B + C) assembled in Step 2) on its side. Connect FIRST SHELF (E) with SIDE FRAME (A + B + C) by SCREWS (J) at narrow end of the SIDE FRAME (A + B + C), where the screw holes are, using HEX KEY (L) to fasten all SCREWS (J).

Do the same for SECOND SHELF (F), THIRD SHELF (G), FOURTH SHELF (H), FIFTH SHELF (I).

Stand the unit upright

