

# **Instruction Manual**

## **Multi-functional Floor Lamp with Table**

Lighting | USB | Storage

# End Table with Lamp instruction

*Important Note:*

*Please read the manual carefully before installing and using the side table lamp.*

## Preface

Thank you for purchasing and using Multi-functional innovative Furniture Co.

This manual has been prepared to acquaint you with the installation, operation, and maintenance of your product and to provide important safety information.

We urge you to read all of the instructions thoroughly before attempting the installation or operation of this floor lamp with table. This manual should be kept for future reference.

The manufacturer of this floor lamp with table will not be liable for any damage caused by failure to comply with the installation and operating instructions outlined in this manual.

***Thank you again for choosing our products!***

# Specification

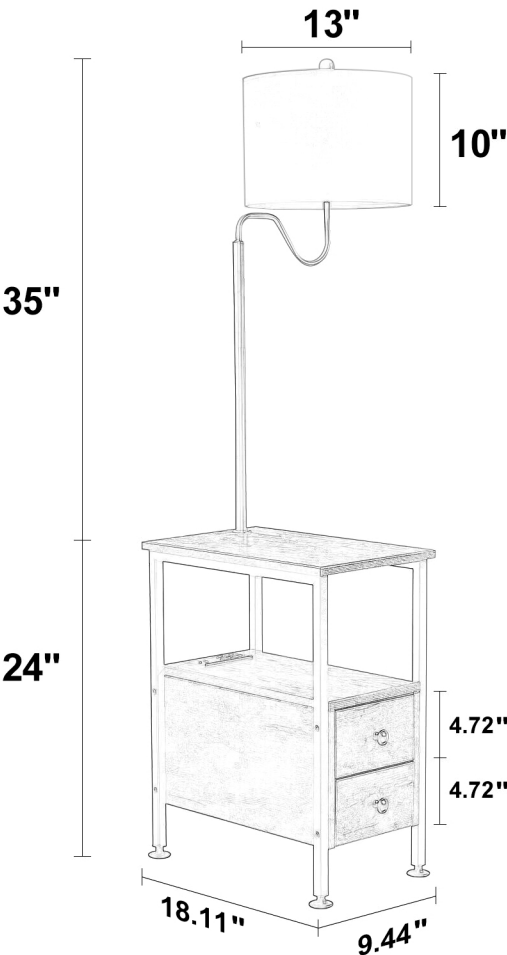
**Main Properties:** Strength, Durability and Stability

**Main Functions:** Light, Storage, USB Type-C & AC outlets Charing Ports

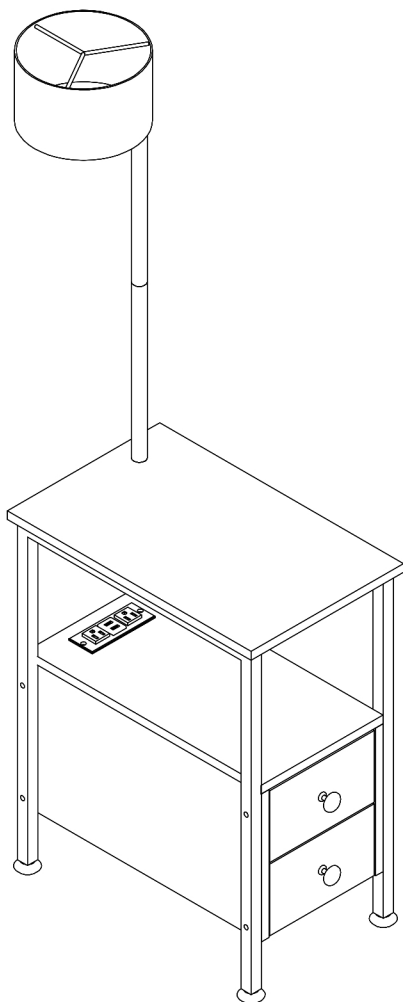
**Main Parameters**

Board material	P2 grade 15mm particle Triamine board
Hardware	20*20*0.7mm wall
Packing	7 layers 140lbs carton
Including	1 U.S. standard 2m line socket

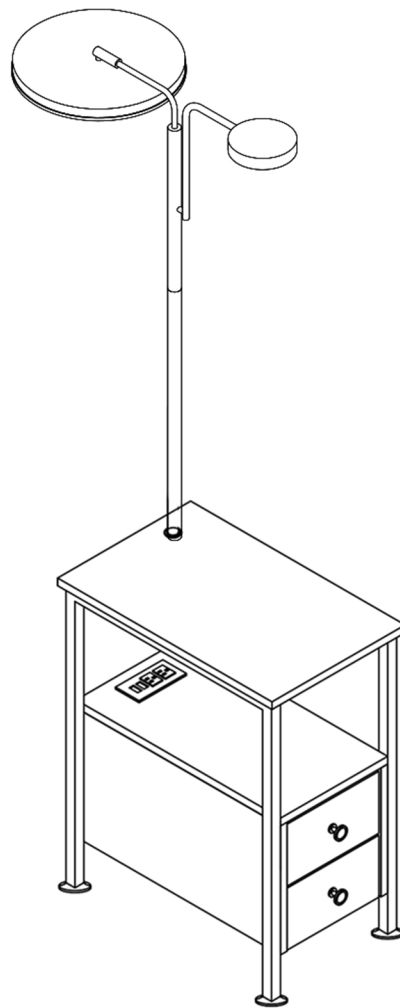
**Size:**



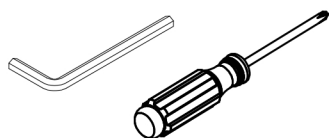
# Model 1



# Model 2



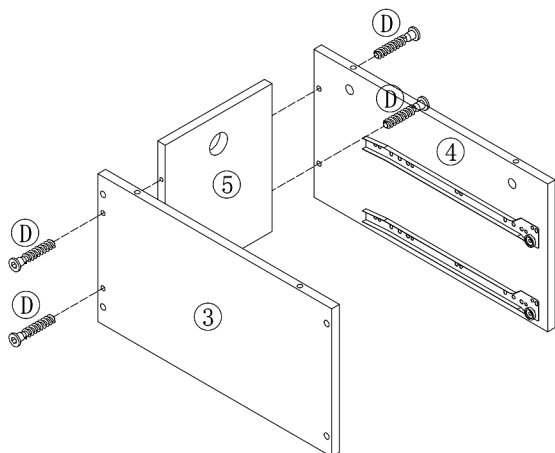
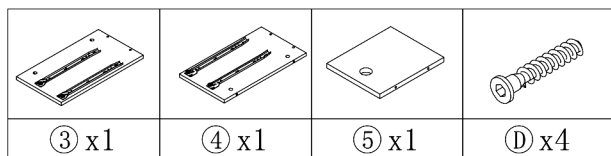
1  1pcs	2  1pcs	3  1pcs	4  1pcs	5  1pcs	6  2pcs	7  2pcs
8  2pcs	9  2pcs	10  2pcs	11  2pcs	12  1pcs Model 1	13  1pcs Model 1	14  1pcs Model 1
15  1pcs Model 1	16  1pcs Model 1	 <b>Note: Only model 2 has this lamp accessory</b> 1pcs Model 2		A  12pcs M6x34	B  12pcs 5x12	D  4pcs M7x38
F  12pcs M6x30	G  2pcs 3.5x14	H  1pcs	I  2pcs	J  2pcs M4x20	K  8pcs 3.5x35	M  4pcs M8



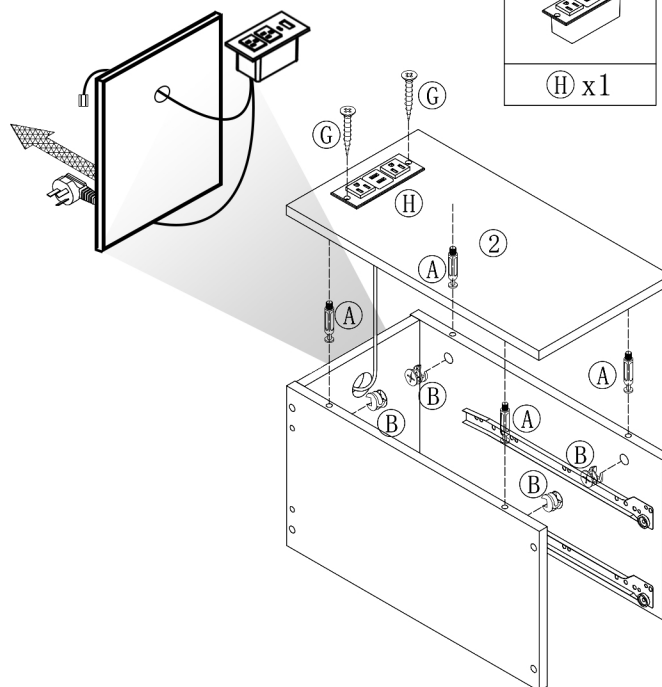
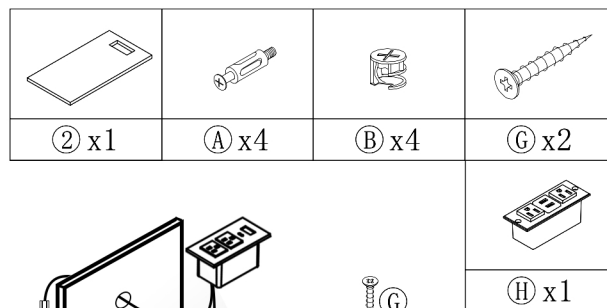
Screwdriver

Tips: Please don't tighten the screws completely and go back later for a final tightening of all the screws after pieces are aligned with each other.

## STEP1

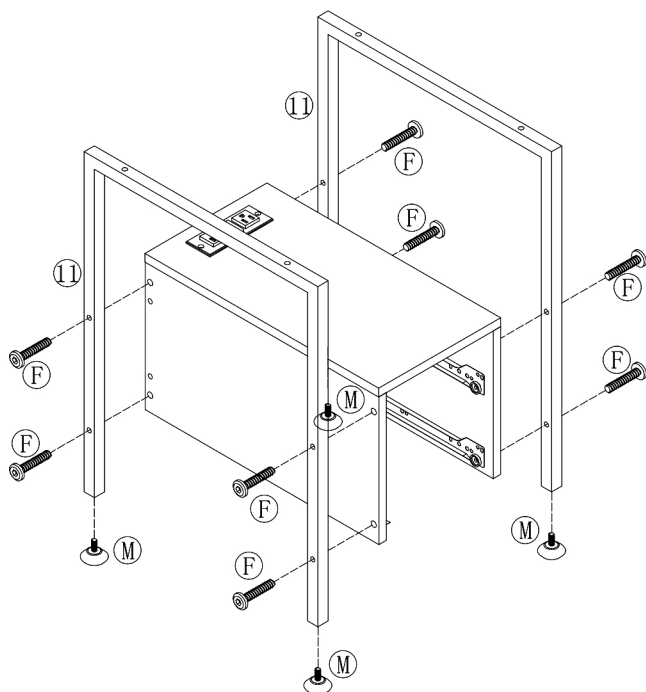
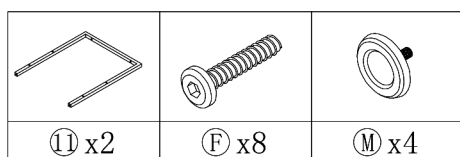


## STEP2

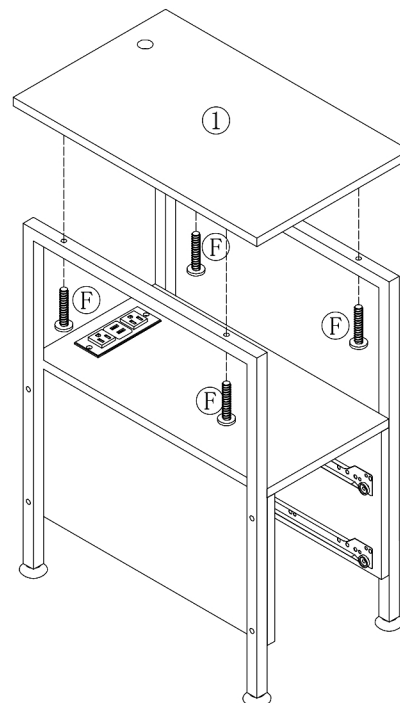
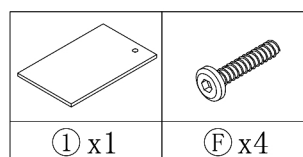


Please put the wire (the one without the standard plug) through the round hole for connecting the lamp head part before putting it into the sliding drawer

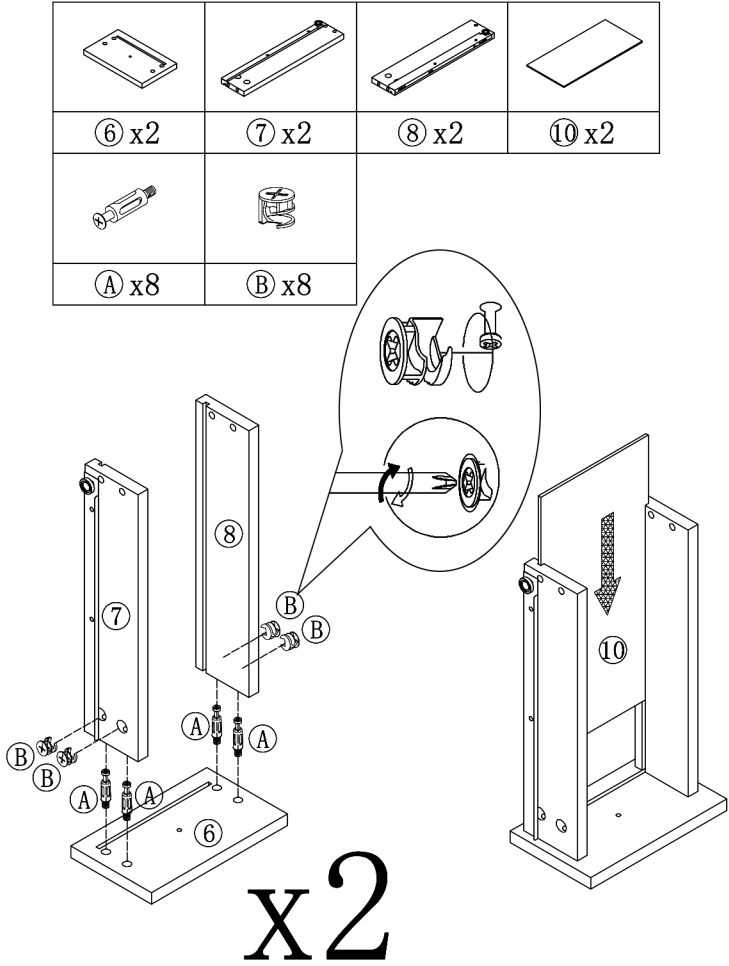
## STEP3



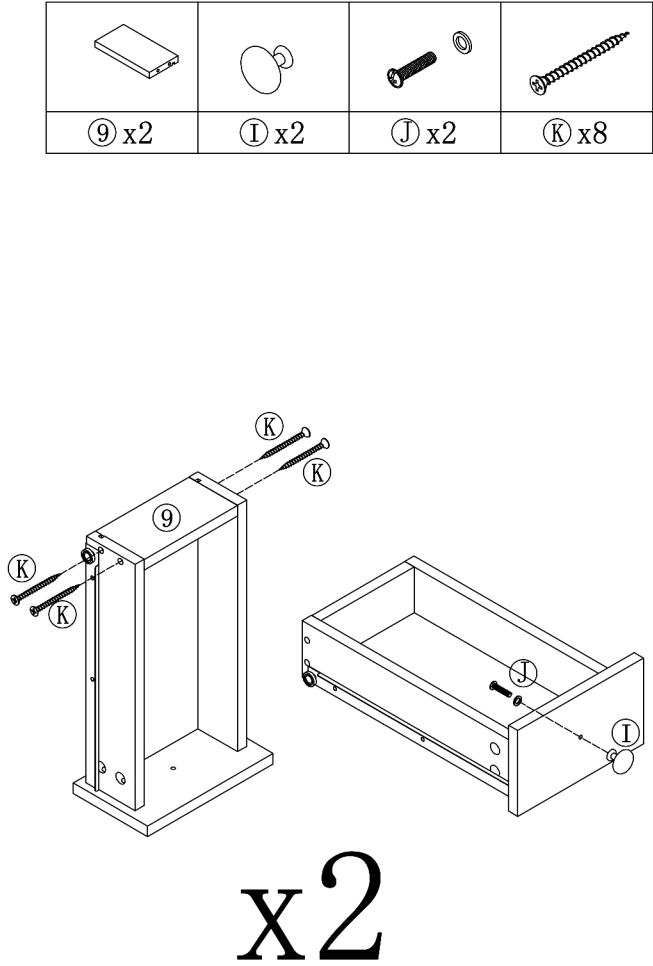
## STEP4



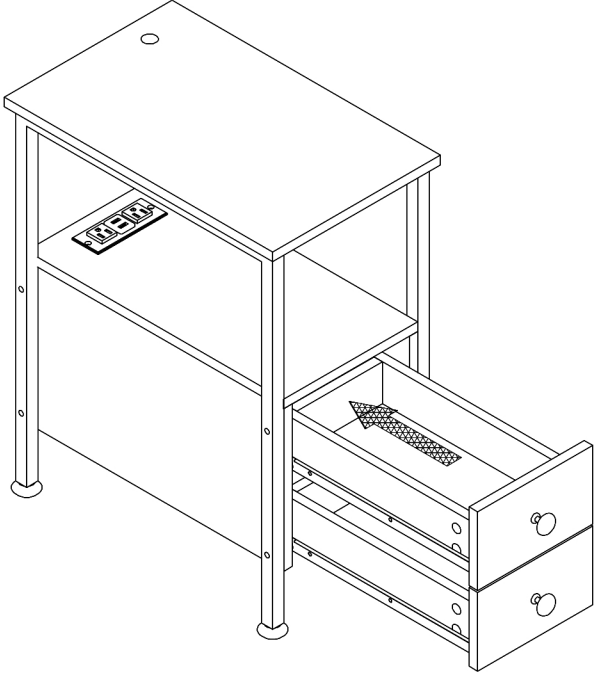
STEP5



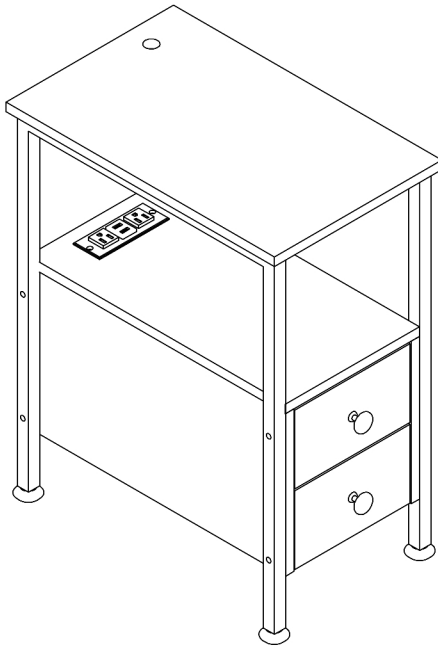
STEP6



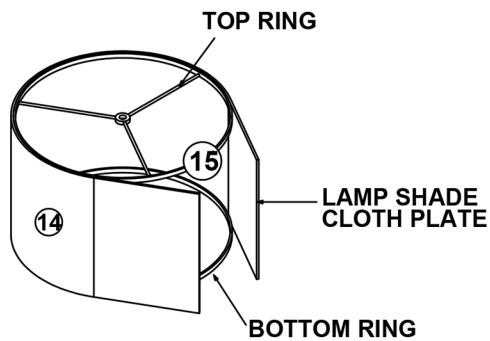
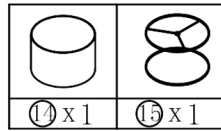
STEP7



STEP8



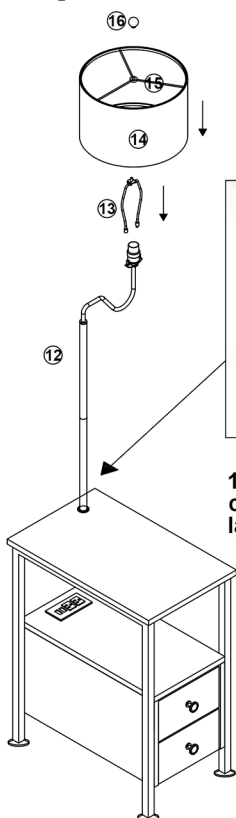
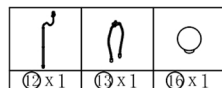
## Step9



## Lampshade is super easy to install

1. Put the BOTTOM RING on the table, then attach 3/4 while LAMP SHADE CLOTH PLATE around the BOTTOM RING.
2. Attach the TOP RING to the upper LAMP SHADE CLOTH PLATE and the rest 1/4 LAMP SHADE CLOTH PLATE to the BOTTOM RING. Then fix the place where the LAMP SHADE CLOTH PLATE is joined end to end.

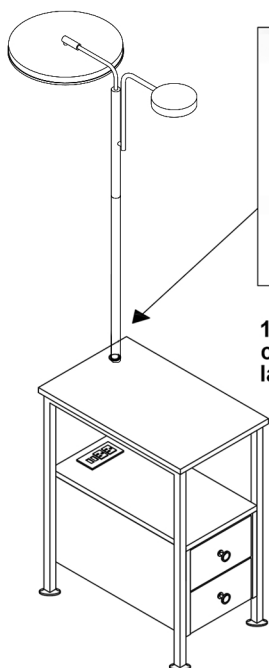
## Step10



1. Please connect the power cable on the USB to the lamp cable.

**Tips:** After tightening the middle of the metal pole of No. 10 lamp first ! ! ! then install the complete No. 10 lamp pole to the table.

## Step9



1. Please connect the power cable on the USB to the lamp cable.

**Lamp model 2 installation**



# Cautions

1. Please check if all accessories are included when opening the package, if not, please contact us.
2. Each lamp uses a maximum 60-watt bulb (not included)
3. When installing, cleaning lamps and replacing light bulb, please cut off the power supply.
4. The bulb will increase the brightness when it is reaching its life span or has a partial short-circuit. At that moment, please switch off, change a bulb, and use it as you would normally.
5. Don't put the lamp in overheating working condition or cast it into the fire.

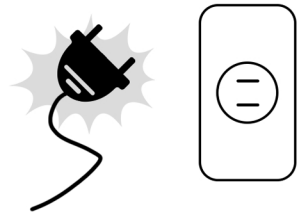
This product is suitable for bulbs within 60w, please do not use high-power bulbs.



Before use, please check if all the voltages match the voltage indicated in the product.



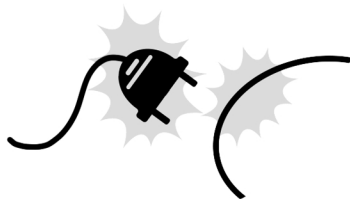
Do not connect to the power supply before the lamp is assembled, and cut off the power supply when moving the lamp.



Do not use wet hands to dial the power plug to avoid the risk of electricity, electric shock



Please check if the power cord and plug are damaged before use, if there is damage, please contact us directly to avoid danger.



Please do not place the lamp on the inclined ground to avoid the lamp falling over.

