

FABRICS



Nottingham-velvet / Terra-cotta - NV39



Nottingham-velvet / Cameo - NV41



Nottingham-velvet / Avocado - NV16



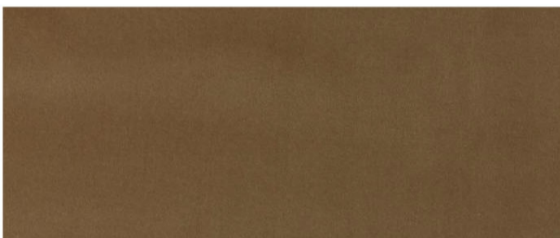
Nottingham-velvet / Ocean - NV24



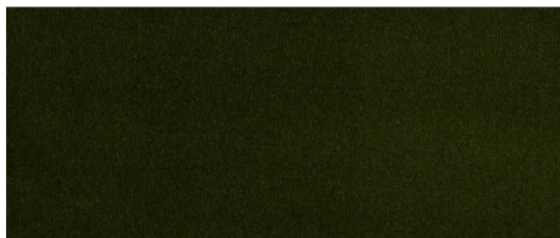
Nottingham-velvet / Marmalade - NV42



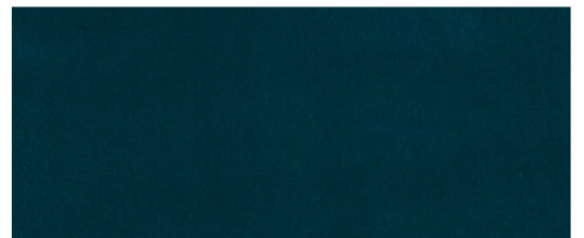
Nottingham-velvet / Cranberry - NV34



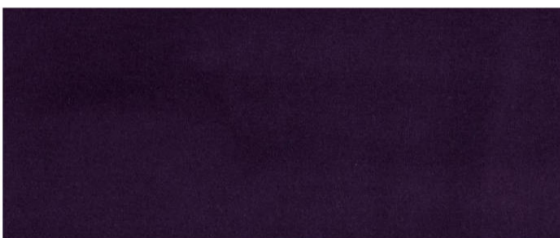
Nottingham-velvet / Taupe - NV12



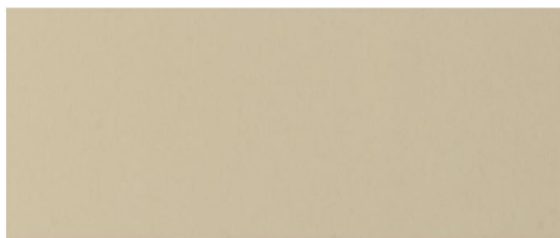
Nottingham-velvet / Evergreen - NV15



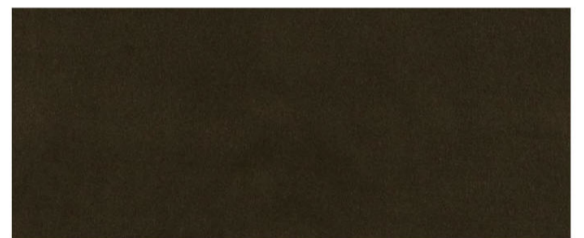
Nottingham-velvet / Ming - NV25



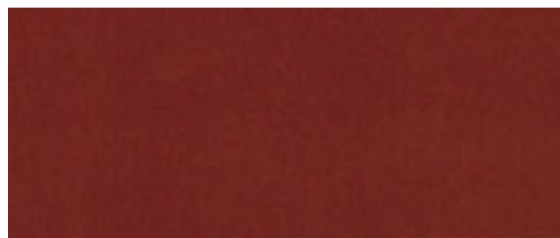
Nottingham-velvet / Violet - NV44



Nottingham-velvet / Shell - NV08



Nottingham-velvet / Earth - NV48



Nottingham - velvet/Bittersweet - NV33

HANDLES LEATHERS



Antiquity Chesterfield - JMAC



Antiquity Creme-Brulee - JMACB



Antiquity Umber - JMAU