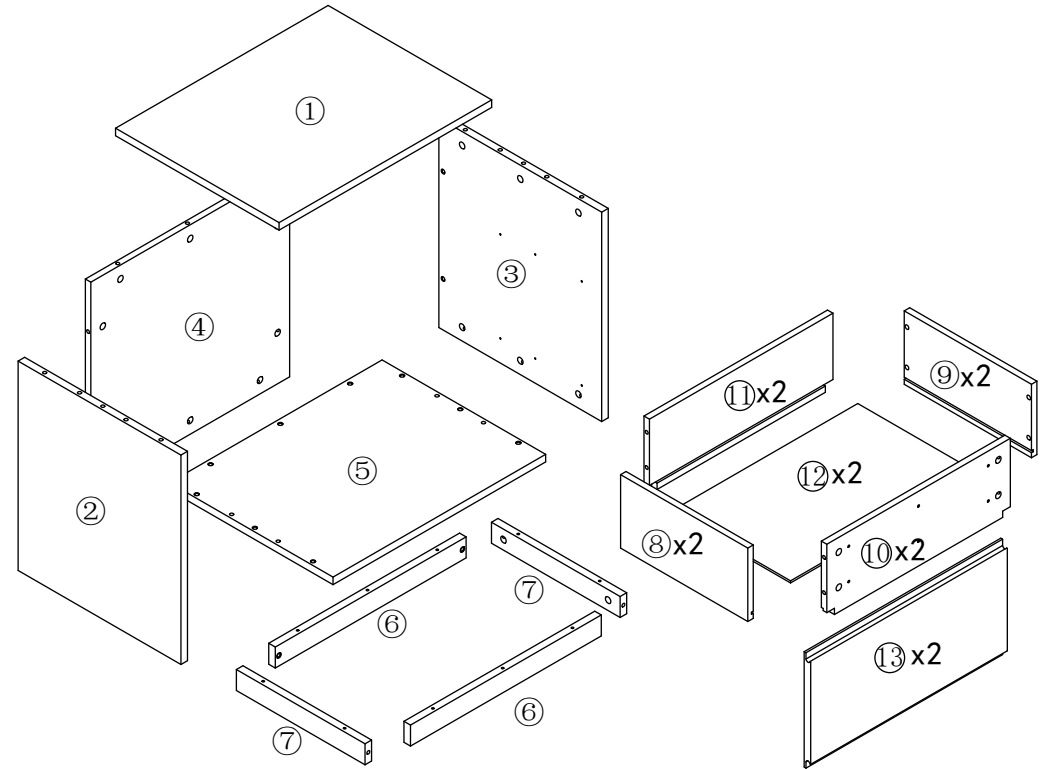
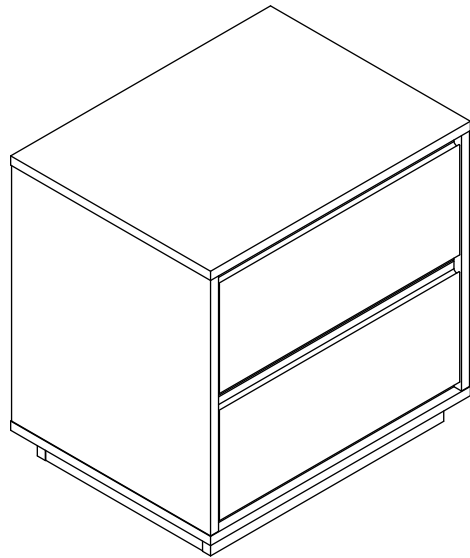


# Assembly Instructions

## NIGHTSTAND

PLEASE NOTE: Check that you have received all components and hardware before assembling. If you are missing any parts, contact your retailer.



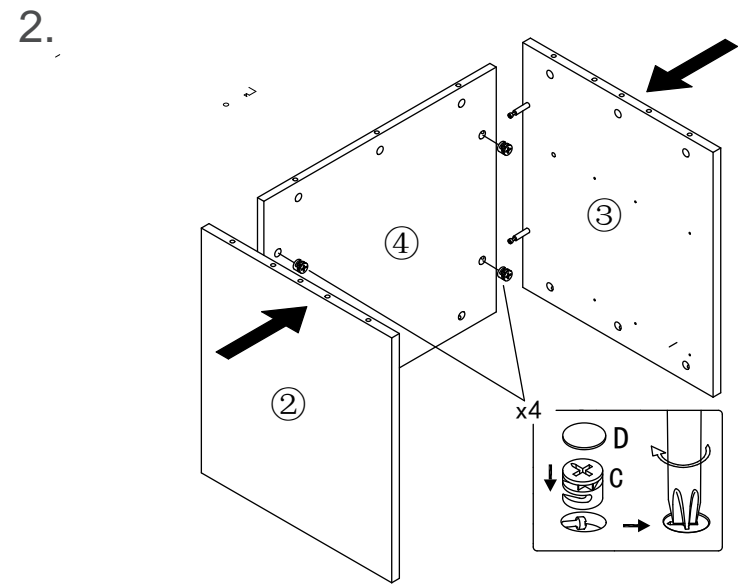
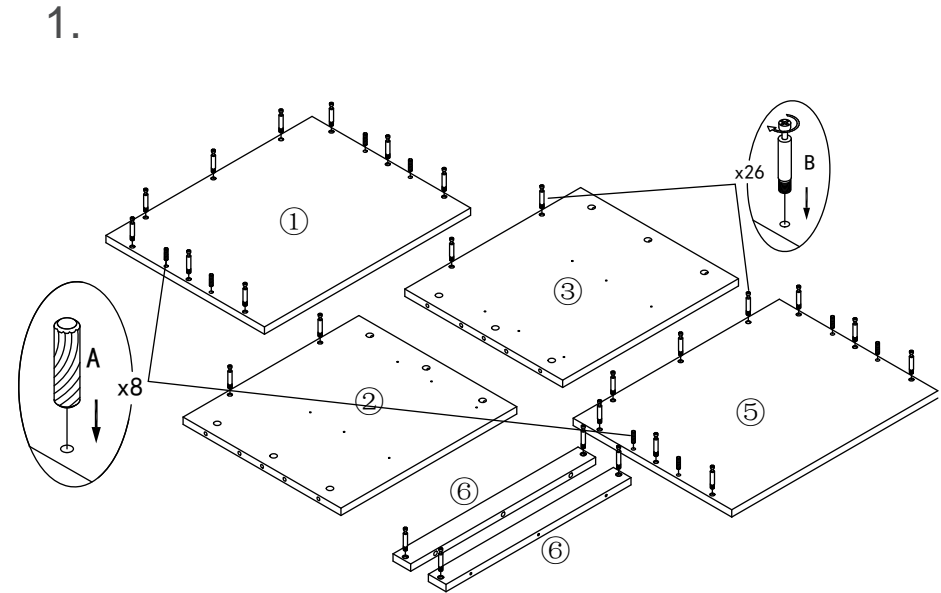
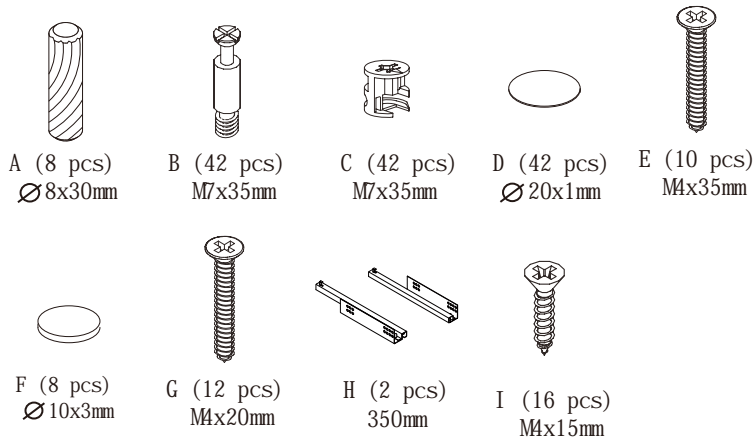
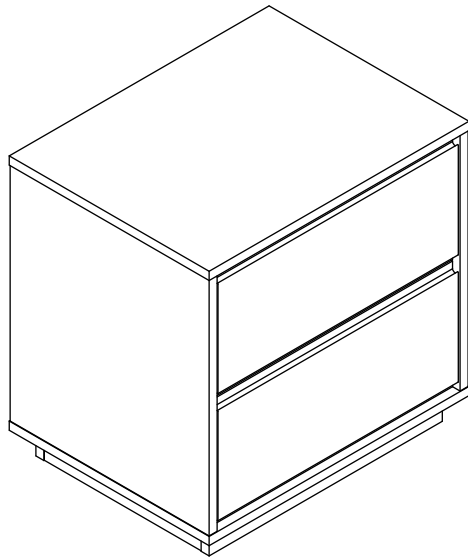
- A (8 pcs)  $\varnothing 8 \times 30 \text{mm}$
- B (42 pcs)  $M7 \times 35 \text{mm}$
- C (42 pcs)  $M7 \times 35 \text{mm}$
- D (42 pcs)  $\varnothing 20 \times 1 \text{mm}$
- E (10 pcs)  $M4 \times 35 \text{mm}$
- F (8 pcs)  $\varnothing 10 \times 3 \text{mm}$
- G (12 pcs)  $M4 \times 20 \text{mm}$
- H (2 pcs) 350mm
- I (16 pcs)  $M4 \times 15 \text{mm}$

During assembly, hand tighten screws only. When the screws are in place, tighten completely.

# Assembly Instructions

## NIGHTSTAND

PLEASE NOTE: Check that you have received all components and hardware before assembling. If you are missing any parts, contact your retailer.

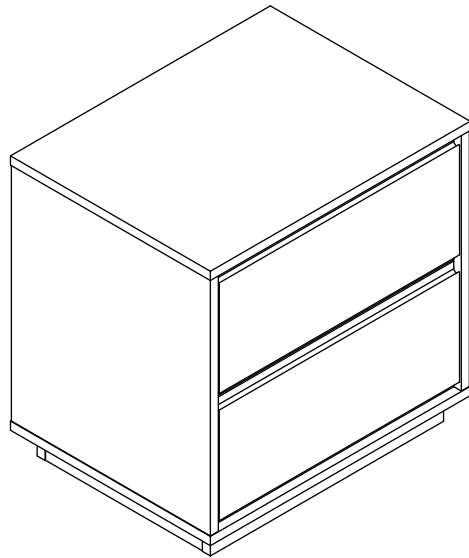









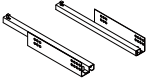

During assembly, hand tighten screws only. When the screws are in place, tighten completely.

# Assembly Instructions

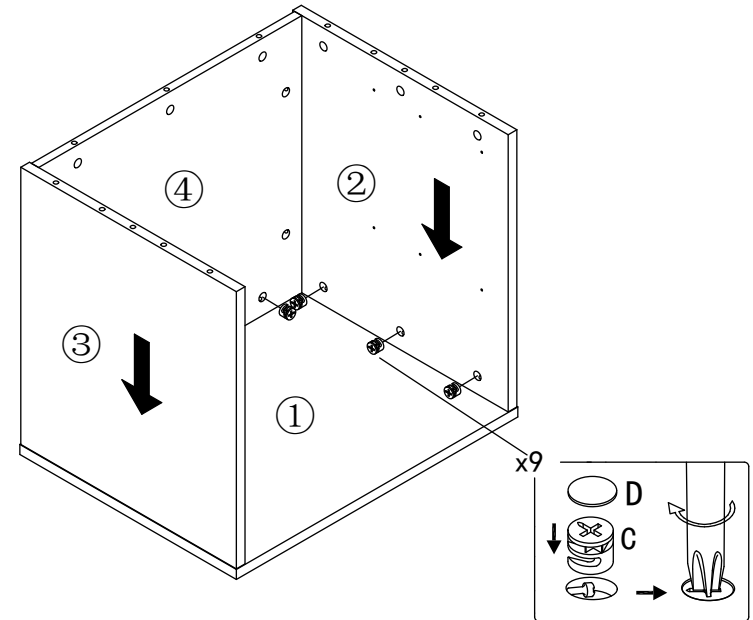
## NIGHTSTAND

PLEASE NOTE: Check that you have received all components and hardware before assembling. If you are missing any parts, contact your retailer.

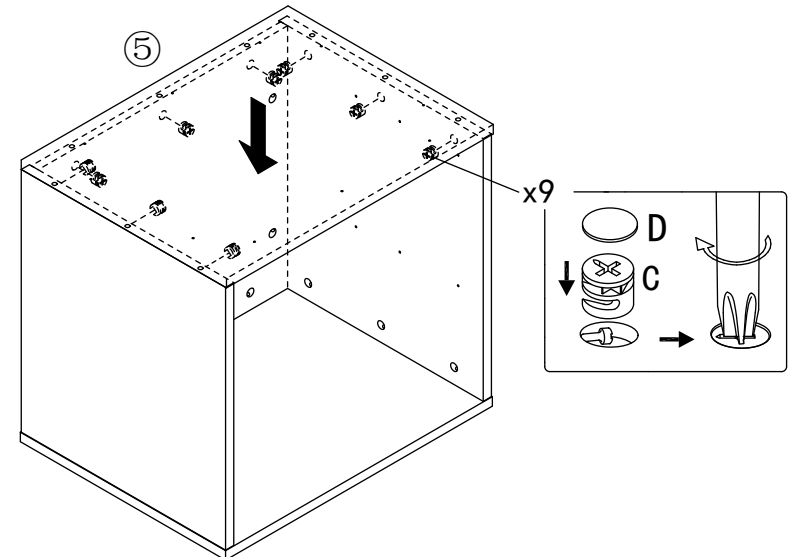


- |   |   |   |   |  |
|---|---|---|---|--|
|   |   |   |   |  |
| A (8 pcs)<br>Ø8x30mm  | B (42 pcs)<br>M7x35mm   | C (42 pcs)<br>M7x35mm   | D (42 pcs)<br>Ø20x1mm   | E (10 pcs)<br>M4x35mm  |
|  |  |  |  |  |
| F (8 pcs)<br>Ø10x3mm  | G (12 pcs)<br>M4x20mm   | H (2 pcs)<br>350mm  | I (16 pcs)<br>M4x15mm   |  |

3.



4.

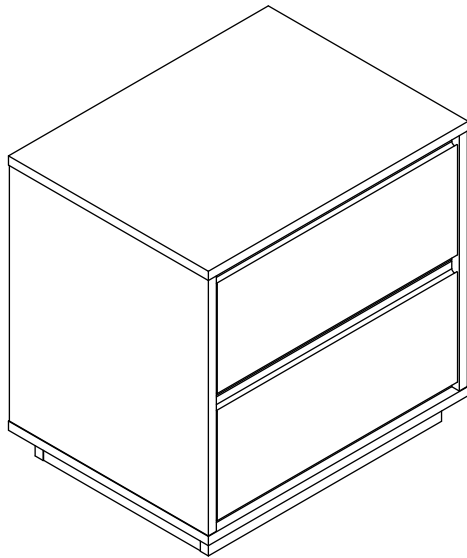


During assembly, hand tighten screws only. When the screws are in place, tighten completely.

# Assembly Instructions

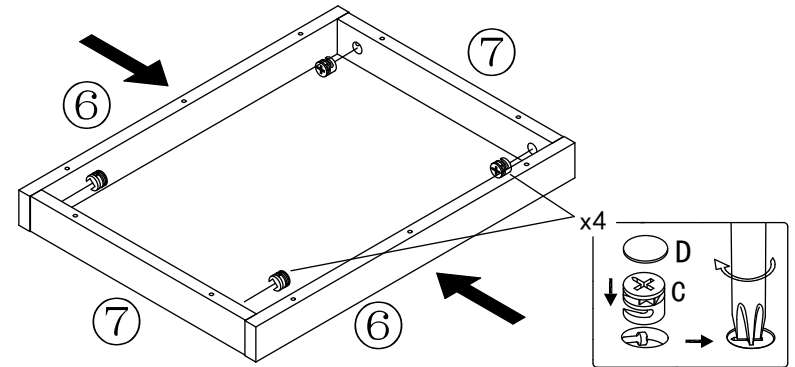
## NIGHTSTAND

PLEASE NOTE: Check that you have received all components and hardware before assembling. If you are missing any parts, contact your retailer.

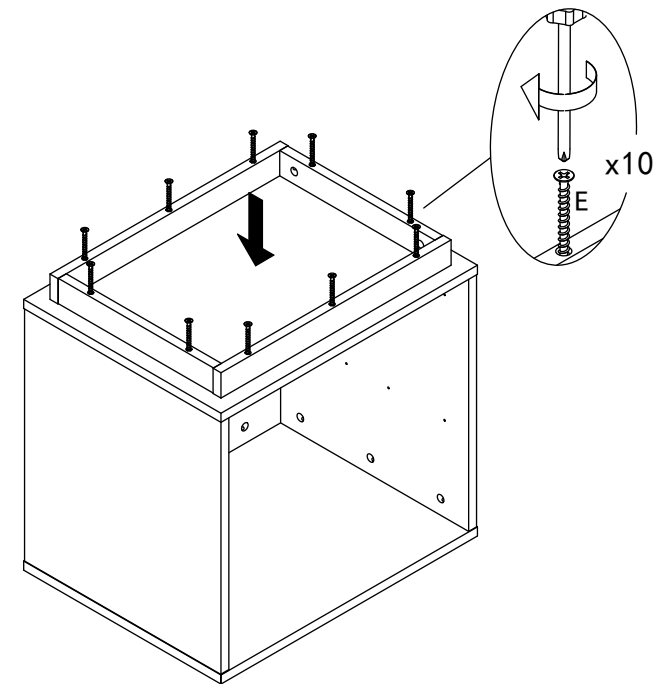


- |                      |                       |                       |                       |                       |
|----------------------|-----------------------|-----------------------|-----------------------|-----------------------|
|                      |                       |                       |                       |                       |
| A (8 pcs)<br>Ø8x30mm | B (42 pcs)<br>M7x35mm | C (42 pcs)<br>M7x35mm | D (42 pcs)<br>Ø20x1mm | E (10 pcs)<br>M4x35mm |
|                      |                       |                       |                       |                       |
| F (8 pcs)<br>Ø10x3mm | G (12 pcs)<br>M4x20mm | H (2 pcs)<br>350mm    | I (16 pcs)<br>M4x15mm |                       |

5.



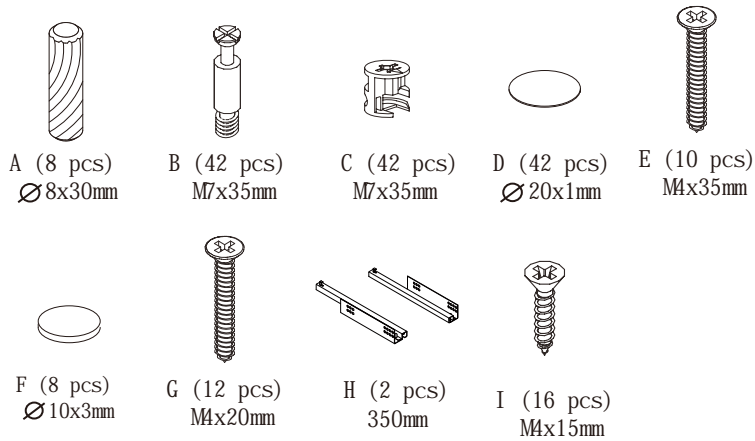
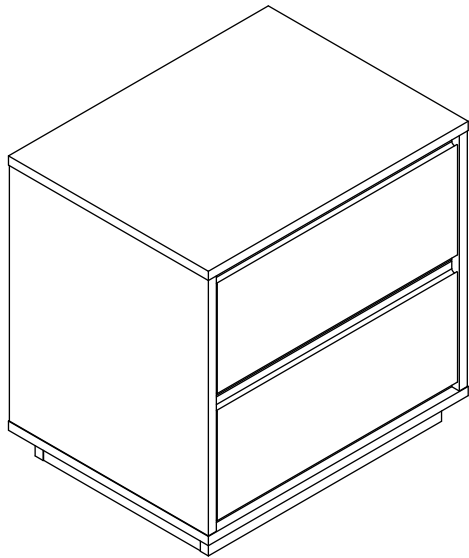
6.



During assembly, hand tighten screws only. When the screws are in place, tighten completely.

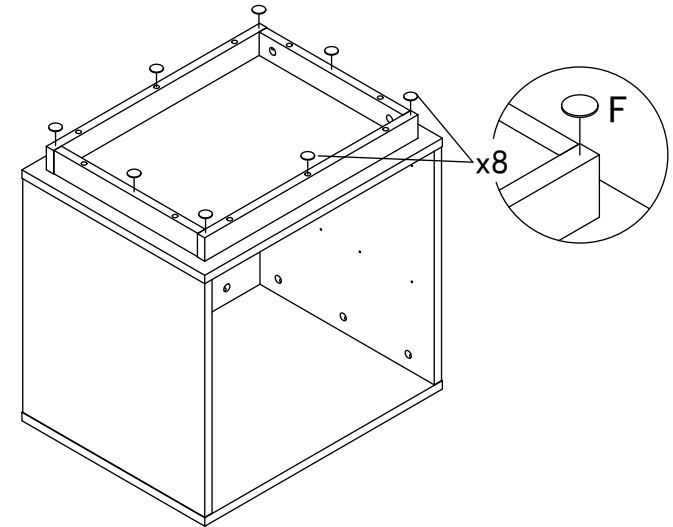
# Assembly Instructions

## NIGHTSTAND

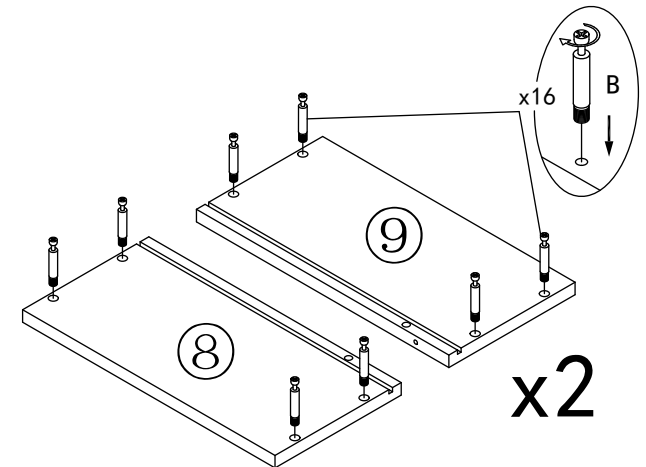


PLEASE NOTE: Check that you have received all components and hardware before assembling. If you are missing any parts, contact your retailer.

7.



8.

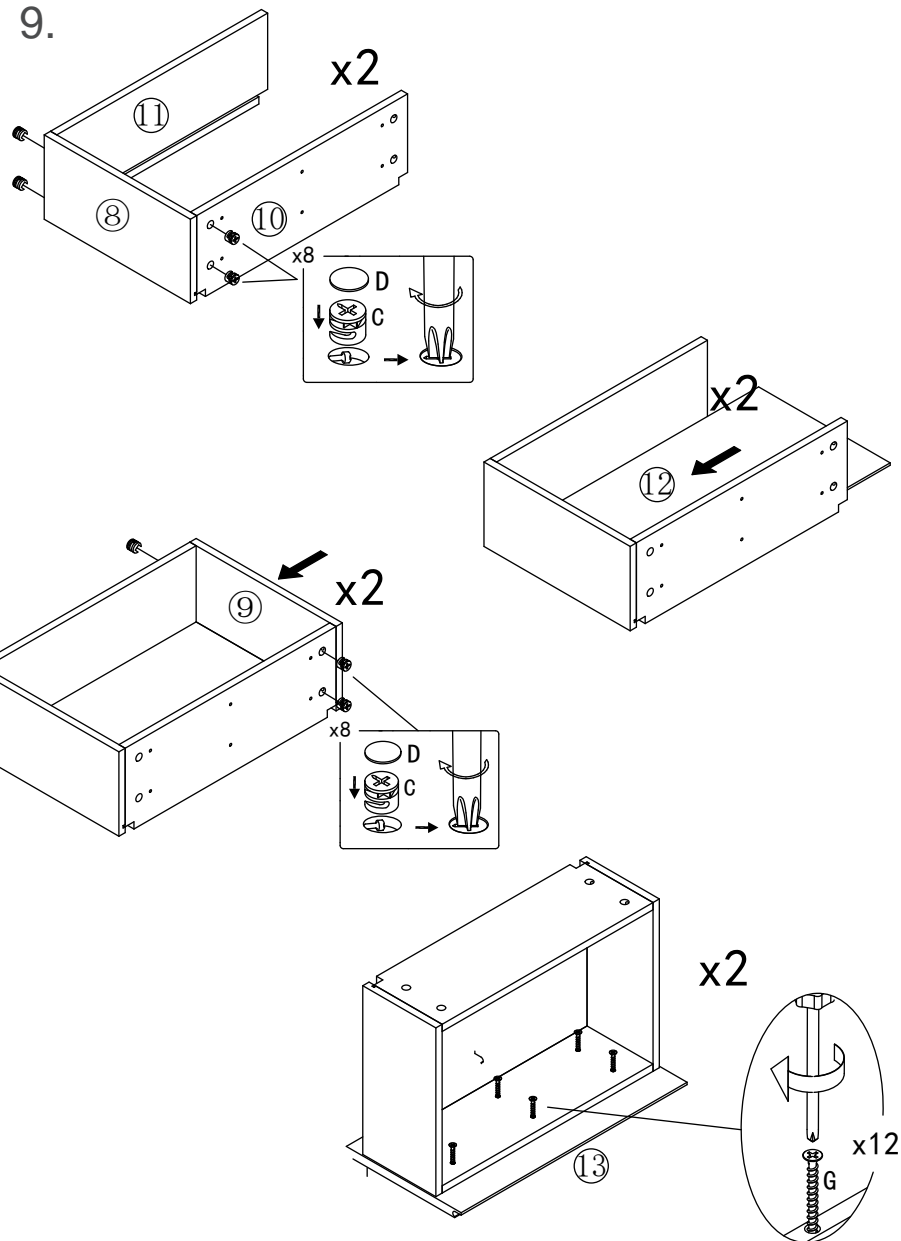
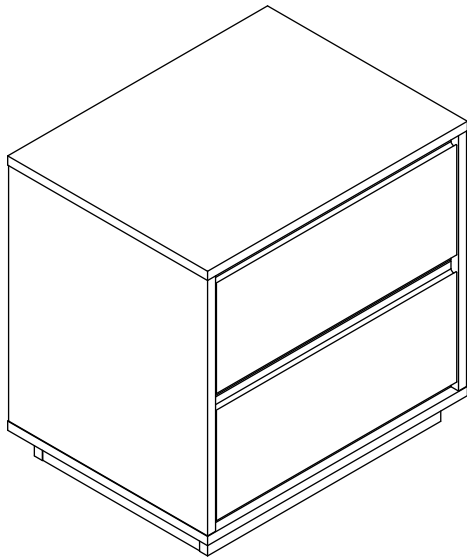



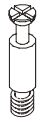


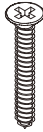


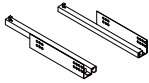

During assembly, hand tighten screws only. When the screws are in place, tighten completely.

# Assembly Instructions

## NIGHTSTAND

PLEASE NOTE: Check that you have received all components and hardware before assembling. If you are missing any parts, contact your retailer.



- |   |   |   |   |  |
|---|---|---|---|--|
|   |   |   |   |  |
| A (8 pcs)<br>Ø8x30mm  | B (42 pcs)<br>M7x35mm   | C (42 pcs)<br>M7x35mm   | D (42 pcs)<br>Ø20x1mm   | E (10 pcs)<br>M4x35mm  |
|  |  |  |  |  |
| F (8 pcs)<br>Ø10x3mm  | G (12 pcs)<br>M4x20mm   | H (2 pcs)<br>350mm  | I (16 pcs)<br>M4x15mm   |  |

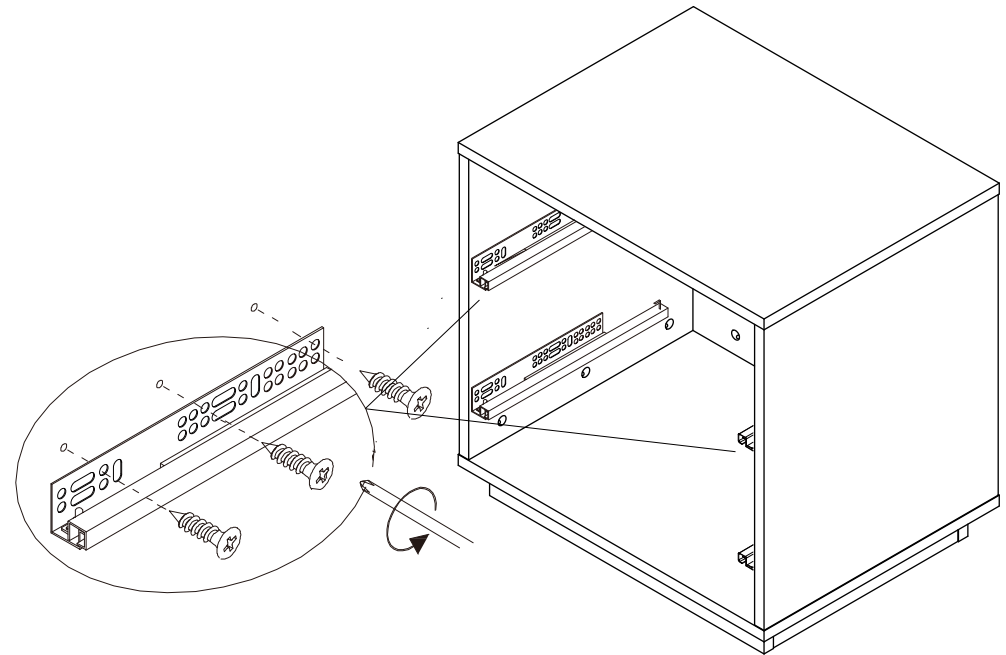
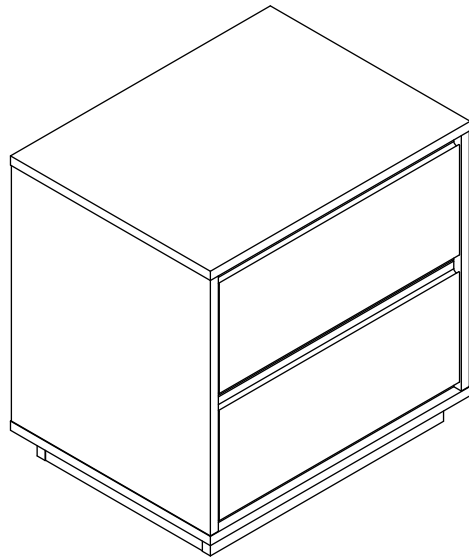
During assembly, hand tighten screws only. When the screws are in place, tighten completely.

# Assembly Instructions

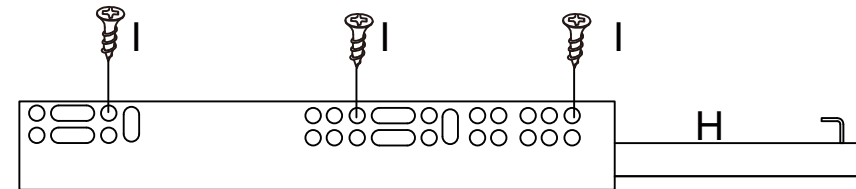
## NIGHTSTAND

PLEASE NOTE: Check that you have received all components and hardware before assembling.  
If you are missing any parts, contact your retailer.

11.



- A (8 pcs)  $\varnothing 8 \times 30 \text{mm}$
- B (42 pcs)  $M7 \times 35 \text{mm}$
- C (42 pcs)  $M7 \times 35 \text{mm}$
- D (42 pcs)  $\varnothing 20 \times 1 \text{mm}$
- E (10 pcs)  $M4 \times 35 \text{mm}$
- F (8 pcs)  $\varnothing 10 \times 3 \text{mm}$
- G (12 pcs)  $M4 \times 20 \text{mm}$
- H (2 pcs) 350mm
- I (16 pcs)  $M4 \times 15 \text{mm}$

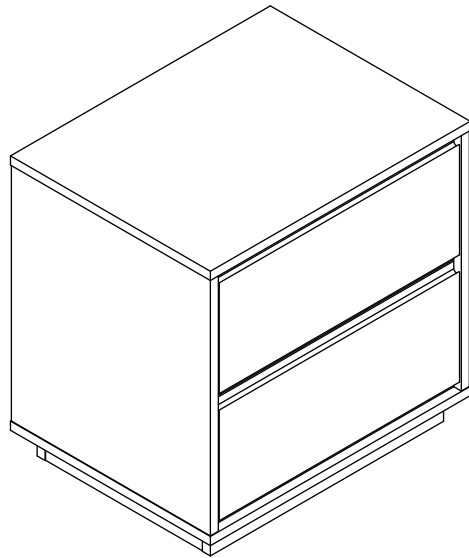


During assembly, hand tighten screws only. When the screws are in place, tighten completely.

# Assembly Instructions

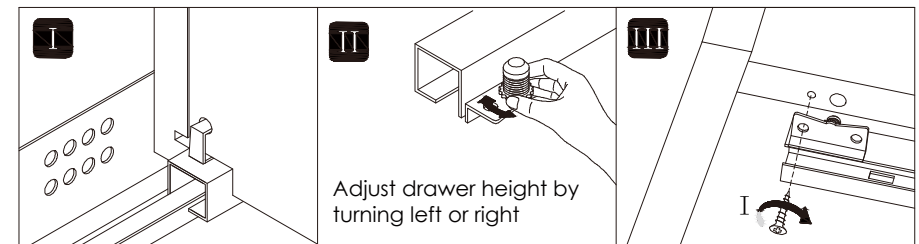
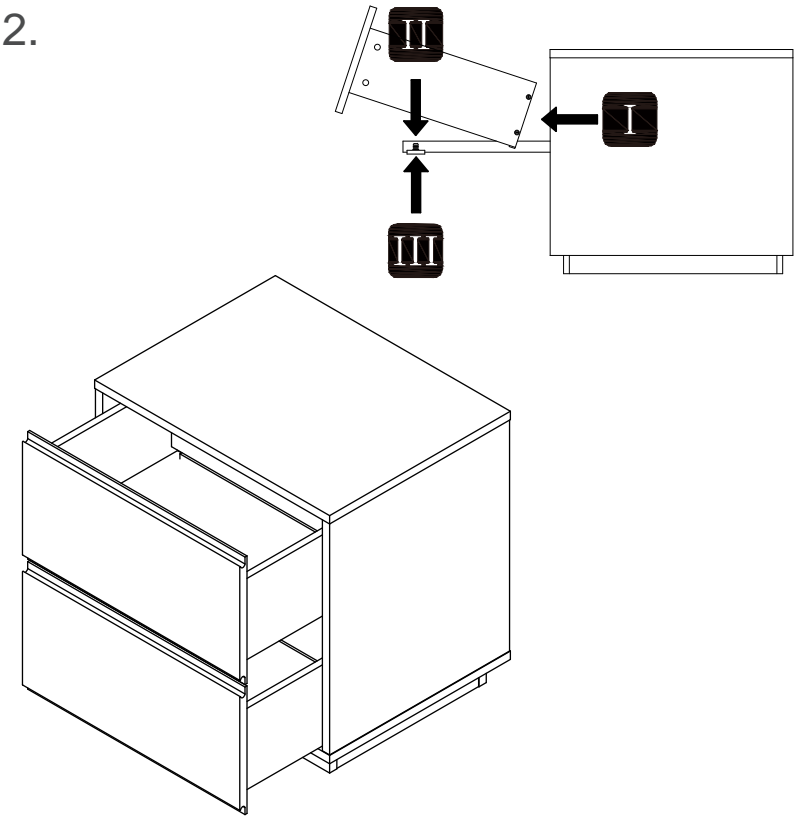
## NIGHTSTAND

PLEASE NOTE: Check that you have received all components and hardware before assembling. If you are missing any parts, contact your retailer.



- A (8 pcs)  $\varnothing 8 \times 30 \text{mm}$
- B (42 pcs)  $M7 \times 35 \text{mm}$
- C (42 pcs)  $M7 \times 35 \text{mm}$
- D (42 pcs)  $\varnothing 20 \times 1 \text{mm}$
- E (10 pcs)  $M4 \times 35 \text{mm}$
- F (8 pcs)  $\varnothing 10 \times 3 \text{mm}$
- G (12 pcs)  $M4 \times 20 \text{mm}$
- H (2 pcs) 350mm
- I (16 pcs)  $M4 \times 15 \text{mm}$

12.



During assembly, hand tighten screws only. When the screws are in place, tighten completely.