

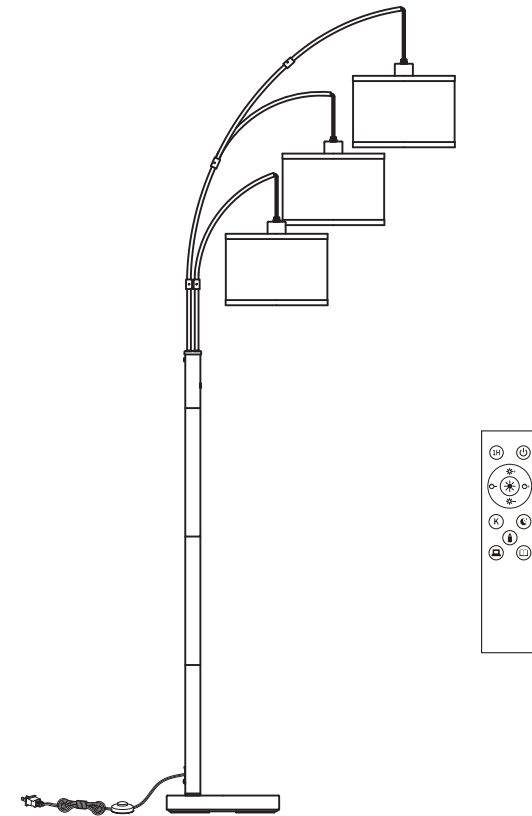
尺寸：A5（展开尺寸：296*210mm 对折尺寸：148*210mm）

材质：105g铜版纸+正反面1C+骑马钉

封面封底背面留白



Video Installation tutorial
<http://service.sunmory.com>



Introduction

Thank you for purchasing our 3 Lights Arc Floor Lamp. Please read the following instructions carefully before use.

Product Features

- 1. Classic fishing style, embellish the space atmosphere of the room.
- 2. Arched floor lamp with solid color finish mixed with a fabric shade combines the best of minimalist design with a modern color palette to bring you a modern minimalist lamp perfect for any space in your home.
- 3. With the lampshade made of linen fabric, it is more ornamental during the day and has highlight transmittance at night.
- 4. With a traditional foot switch, both children and adults can easily switch the lights;
- 5. The lamp is equipped with a remote control bulb, you can control the light switch, brightness and color temperature through the remote control conveniently.
- 6. Our remote control has the code matching function, which allows you to control several lights with one remote control in different scenes.

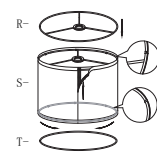
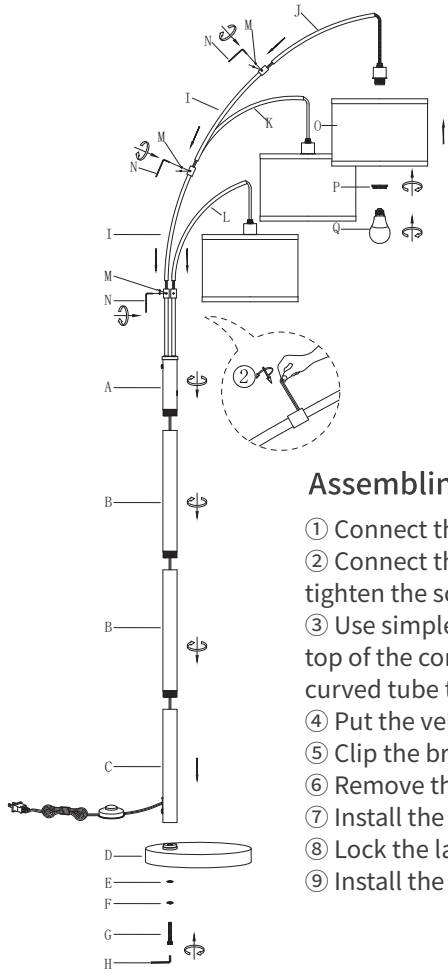
Parameter

Lamp	
Model .	F00079014B
Power For Blub	MAX 60W
Material	Iron+ Fabric
Socket Type	E26
Switch	Foot switch+Remote control
Size For Shade	D10x7 inches
Size For Lamp	28.2 x11x78 inches
Bulb	
Voltage	100-120V
Power	9W
Brightness	810lm
CCT	3000K-6000K
Life	30000h

Cautions

- 1. Please make sure that the voltage is 100-120V, which is standard for US. This product can only be used between 100-120V.
- 2. Unplug before cleaning.
- 3. Since our lamp base uses E26 base, it can be compatible with many types of bulbs! For example, A19/ST64/ST58 and so on.(Bulb is NOT included)

Package List



1. Lamp Stand x 1

2. Base x 1

3. Nut x3

4. Lampshade x3

5. Top Bracket x3

6. Bottom Bracket x3

7. Gasket x1

8. Spring Washer x1

9. M8 Wrench x1

10. Small Screw x18 (6for spare) (Pre-Installed)

11. G5/31 Wrench x1

12. Srcew x1

13. Bulb x3

14. Remote Control+Battery

Assembling

① Connect the straight tube to another straight tube(A->B->C).

② Connect the assembled straight tube to the base(D) and tighten the screws G (Shimmed E&F)with the large wrench H.

③ Use simple wrench(N) to remove the two screws(M) on the top of the connecting the curved tube(I), and connect the curved tube to the lamp holder tube.(Align the arcs.)

④ Put the velcro at both ends of the lampshade(S) together.

⑤ Clip the bracket(R&T) to the lampshade.

⑥ Remove the lamp nut(P) located on the lamp holder.

⑦ Install the assembled lampshade to the lamp holder.

⑧ Lock the lampshade on the lamp holder with the lamp nut.

⑨ Install the bulb to finish the assembling.

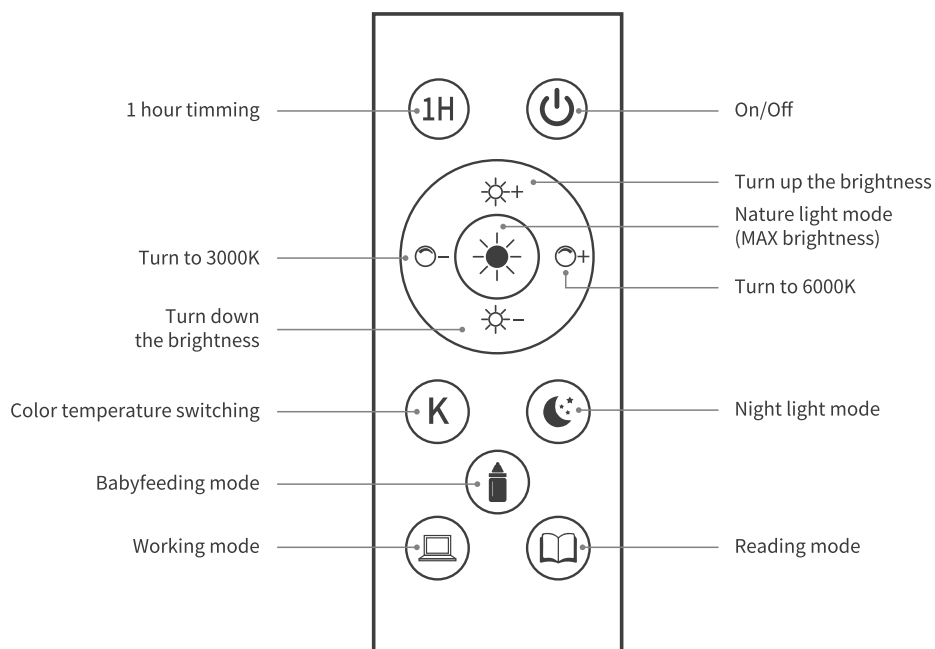
Usage

On/Off: ① Step on the foot switch.

② Press switch button on the remote control.

CCT: Press the color temperature +/- button, short press is for grading dimming, long press is for stepless dimming.

Brightness: Press the brightness +/- button, short press is for grading dimming, long press is for stepless dimming.



Matching

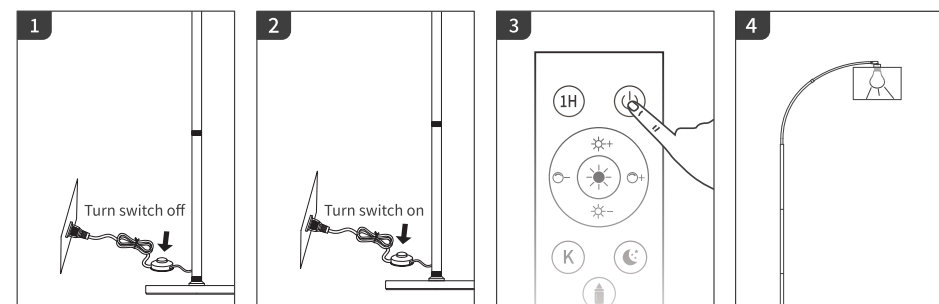
Make sure the remote control matches well with the lamp :

Plug the adapter to the power supply and use the remote to control the lamp. Usually the remote controls the lamp perfectly.

If the remote control doesn't work for the lamp, please re-match them.

Matching process:

1. Disconnect the power supply for more than 10 seconds.
2. Connect the power supply.
3. Press the power button on the remote and hold on within 5s after powering on.
4. When the light flashes, it matched successfully.



Warranty and Our mission

Light the world, warm your heart, which is the goal that we have been pursuing. We'd like to provide you with the best lamps and services. We provide a 36-month warranty for you. If you have any questions or suggestions, please contact us (E-mail: us@sunmory.com) soon, we will do our best to solve the problem and improve ourselves. Wish you enjoy the lamp and our service.