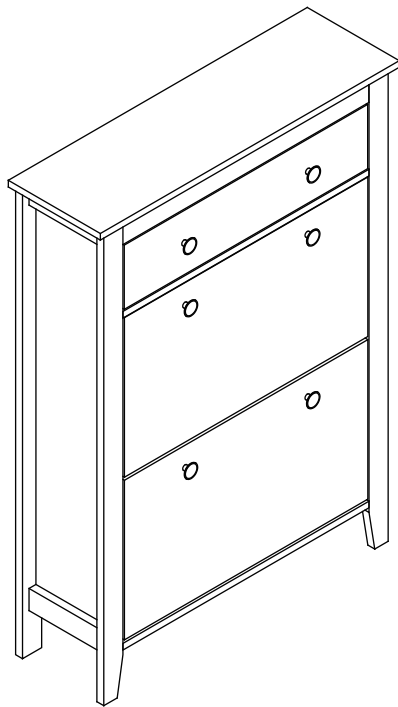


Instruction manual



CONTENTS

Safety and care advice	1
Components – panels	2
Components – fittings	3
Assembly instructions	4
Copyright	16

⚠️ SAFETY AND CARE ADVICE ⚠️

PLEASE READ THESE INSTRUCTIONS CAREFULLY AND KEEP FOR FUTURE REFERENCE

Warning: Please lift with care.

- Check you have all the components and tools listed on pages 2 and 3.
- Remove all fittings from the plastic bags and separate them into their groups.
- Keep children and animals away from the work area, small parts could choke if swallowed.
- Make sure you have enough space to layout the parts before starting.
- Do not stand or put weight on the product, this could cause damage.
- Assemble the item as close to its final position (in the same room) as possible.
- Assemble on a soft level surface to avoid damaging the unit or your floor (use opened out unit carton).



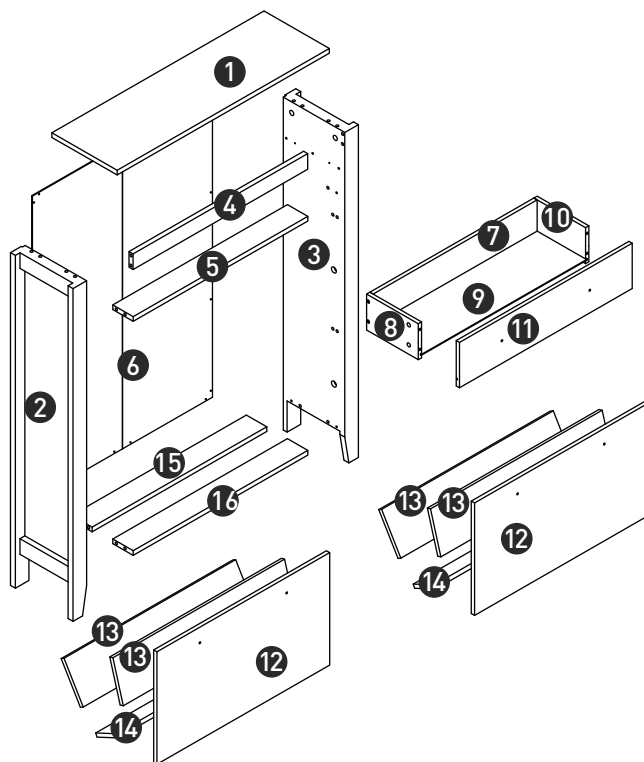
- We do not recommend the use of power drill/drivers **for inserting screws**, as this could damage the unit. Only use hand screwdrivers.
- Safety note:** If there is any chance of this unit being pulled over by children etc. it is recommended that the unit is secured to a wall using suitable fixings (not supplied).
- Dispose of all packaging carefully and responsibly.

CARE AND MAINTENANCE

- Only clean using a damp cloth and mild detergent, do no use bleach or abrasive cleaners.
 - From time to time check that there are no loose screws on this unit.
 - This product should not be discarded with household waste. Take to your local authority waste disposal center.
- Note:** *If required the next page can be cut out and used as reference throughout the assembly. Keep this page with these instructions for future reference*

COMPONENTS — PANELS

Please check you have all the panels listed below:



PANEL LIST

1 Top Panel(SC012 - 01)	x1	9 Drawer Bottom Panel(SC012 - 09)	x1
2 Left Side Panel(SC012 - 02)	x1	10 Drawer Right Panel(SC012 - 10)	x1
3 Right Side Panel(SC012 - 03)	x1	11 Drawer Front Panel(SC012 - 11)	x1
4 Upper Crossing Bar(SC012 - 04)	x1	12 Door(SC012 - 12)	x2
5 Crossing Bar(SC012 - 05)	x1	13 Divider Panel(SC012 - 13)	x4
6 Back Panel(SC012 - 06)	x1	14 Bottom Panel(SC012 - 14)	x2
7 Drawer Back Panel(SC012 - 07)	x1	15 Back Crossing bar(SC012 - 15)	x1
8 Drawer Left Panel(SC012 - 08)	x1	16 Front Crossing bar(SC012 - 16)	x1



COMPONENTS — FITTINGS

Please check you have all the fittings listed below:



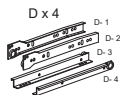
A
Metal cam pin x 14
SC012 - A



B
Metal cam lock Ø15mm x 10
SC012 - B



C
Wooden dowel Ø8mm x 14
SC012 - C



D
Runner x 1
SC012 - D



E
Screw 40mm x 4
SC012 - E



F
Screw 14mm x 32
SC012 - F



G
Handle x 6
SC012 - G



H
Screw 21mm x 6
SC012 - H



I
Metal cam lock Ø13mm x 4
SC012 - I



J
Plastic rack left x 2
SC012 - J



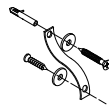
K
Plastic rack right x 2
SC012 - K



L
Drawer stopper x 1
SC012 - L



M
Screw 12mm x 16
SC012 - M



N
Anti-topple device x 2
SC012 - N



O
Plastic stopper x 4
SC012 - O

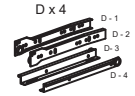


P
Screw 10mm x 4
SC012 - P

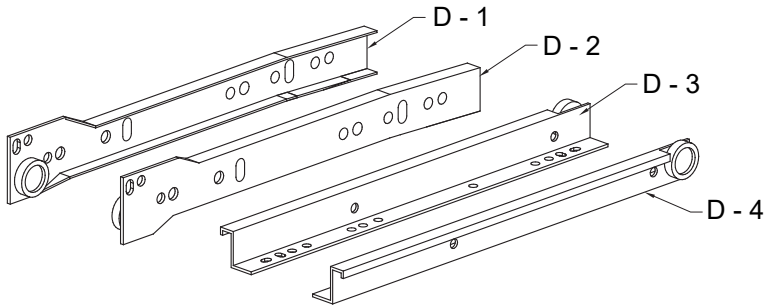


ASSEMBLY INSTRUCTIONS





Step 1

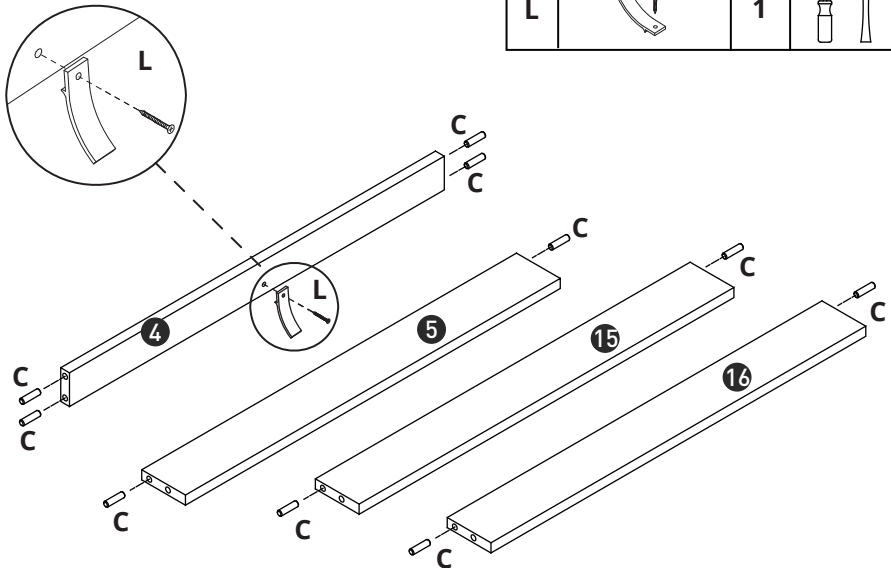
D		1	
---	---	---	--

$$D=(D-1)+(D-2)+(D-3)+(D-4)$$






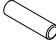

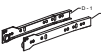
Step 2

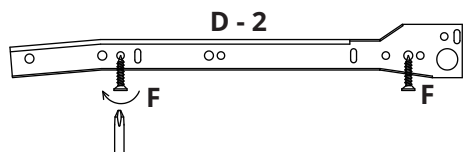
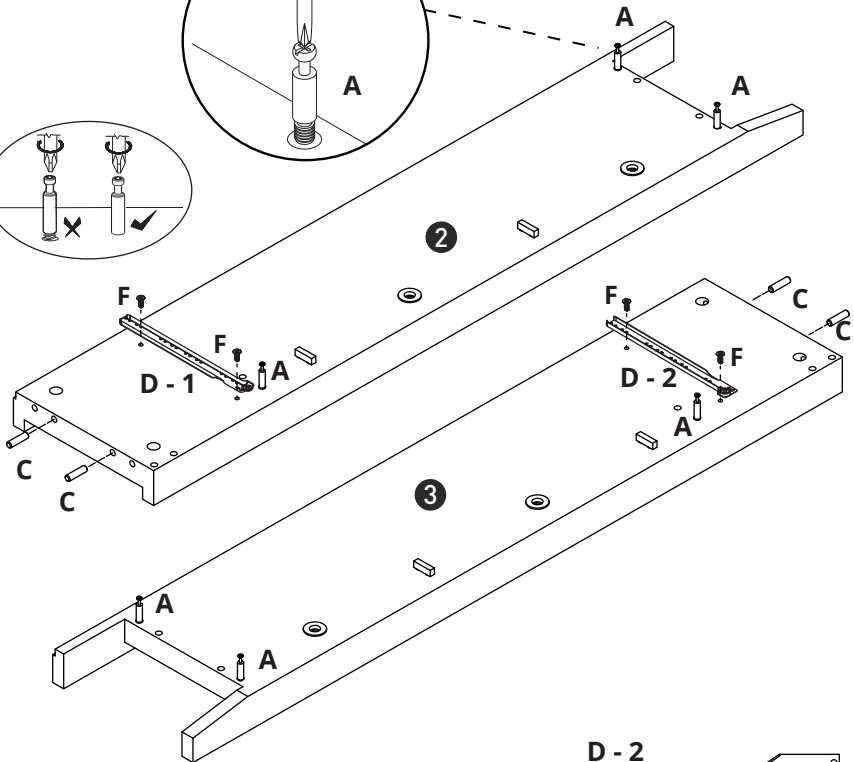
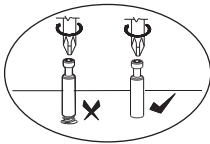
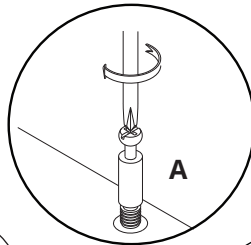
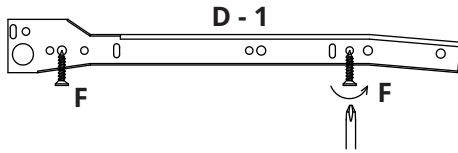
C		10	
L		1	



ASSEMBLY INSTRUCTIONS

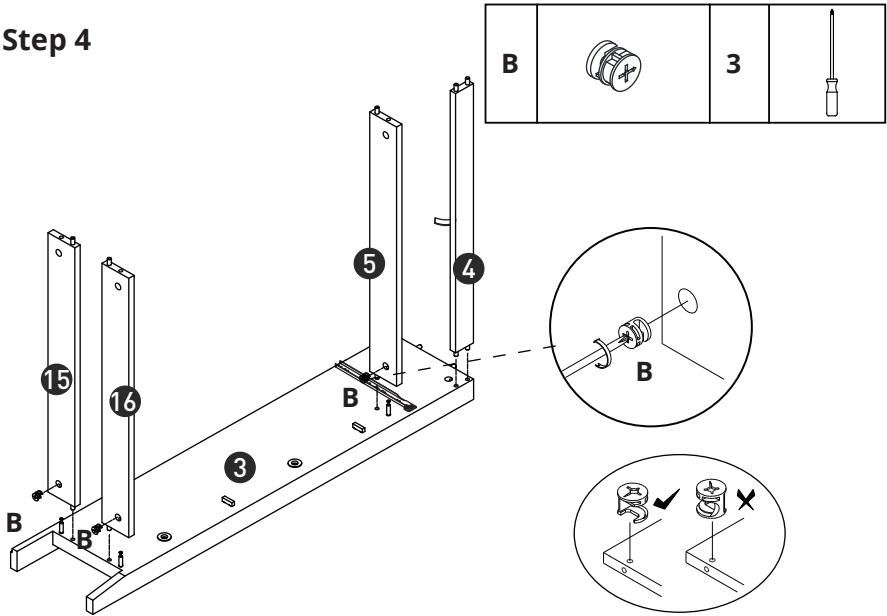
Step 3

A		6	 
C		4	
F		4	
D		2	

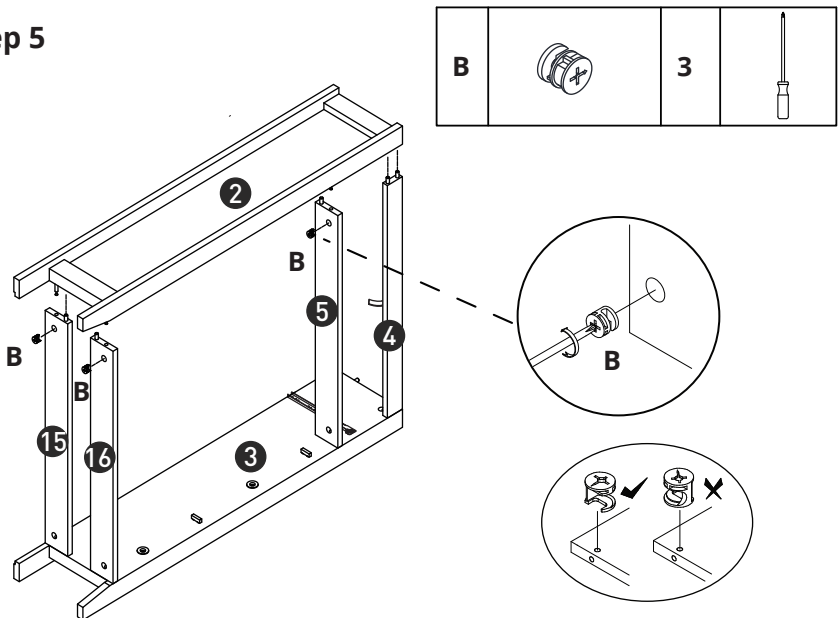


ASSEMBLY INSTRUCTIONS

Step 4

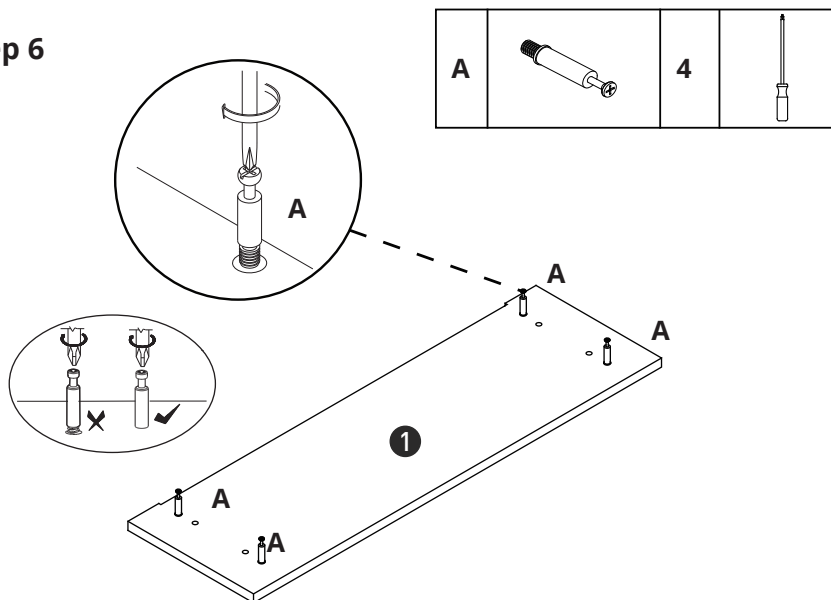


Step 5

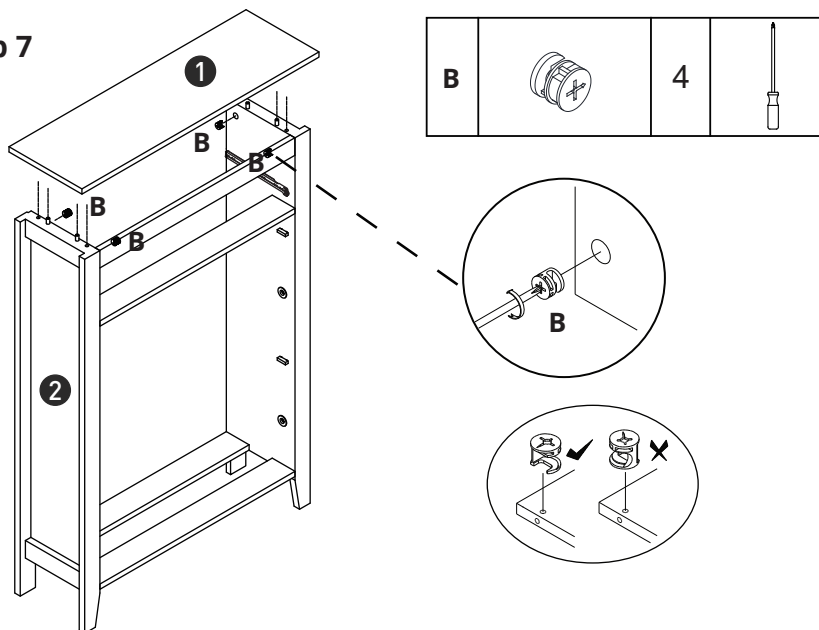


ASSEMBLY INSTRUCTIONS

Step 6







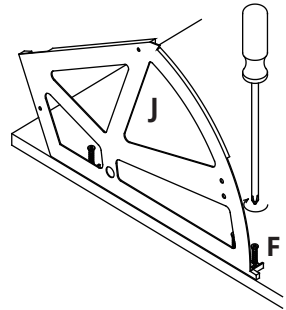
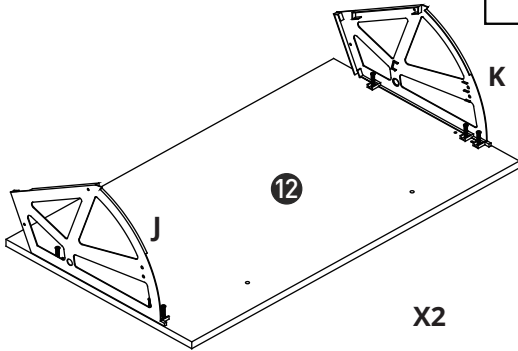
Step 7





ASSEMBLY INSTRUCTIONS

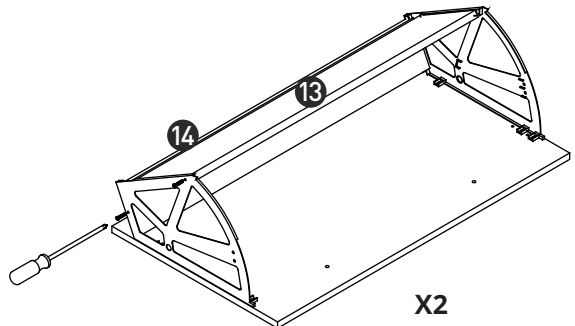
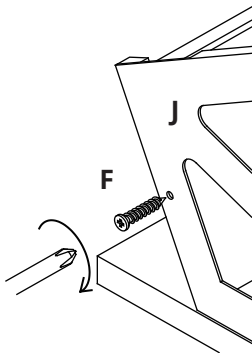
Step 8

F		12	
J		2	
K		2	








Step 9

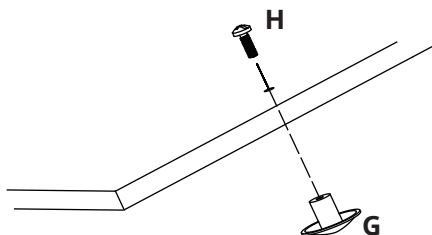
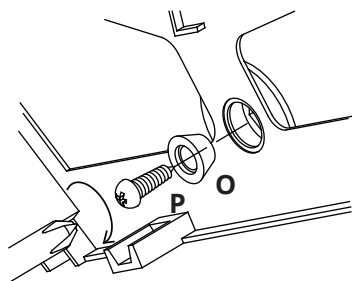
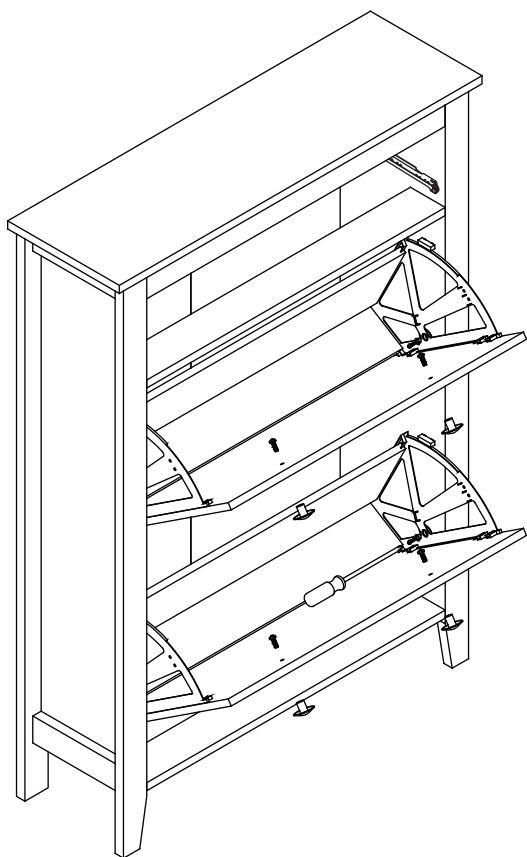
F		8	
---	---	---	---



ASSEMBLY INSTRUCTIONS

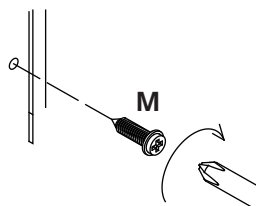
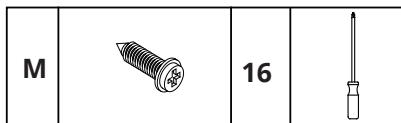
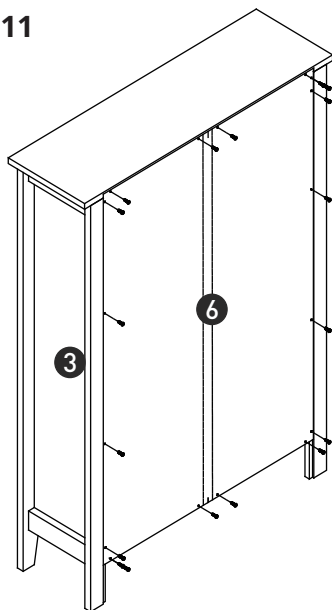
Step 10

G		4	
H		4	
O		4	
P		4	

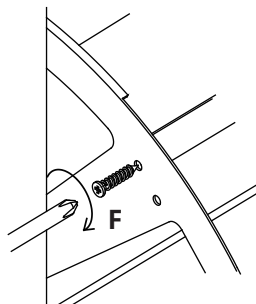
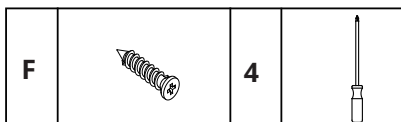
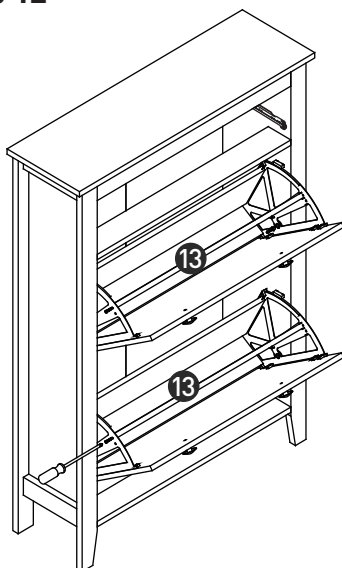


ASSEMBLY INSTRUCTIONS

Step 11

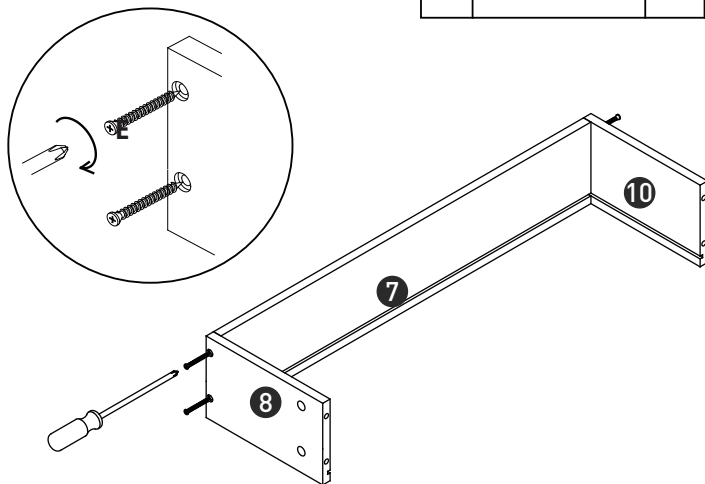
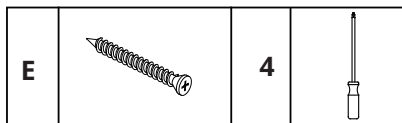


Step 12

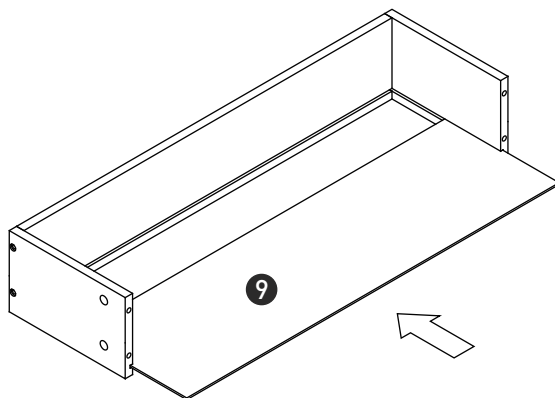


ASSEMBLY INSTRUCTIONS

Step 13





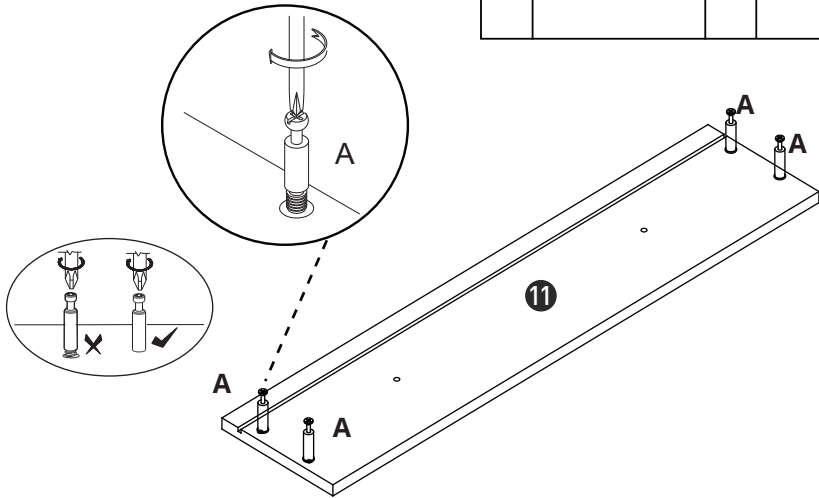
Step 14










ASSEMBLY INSTRUCTIONS

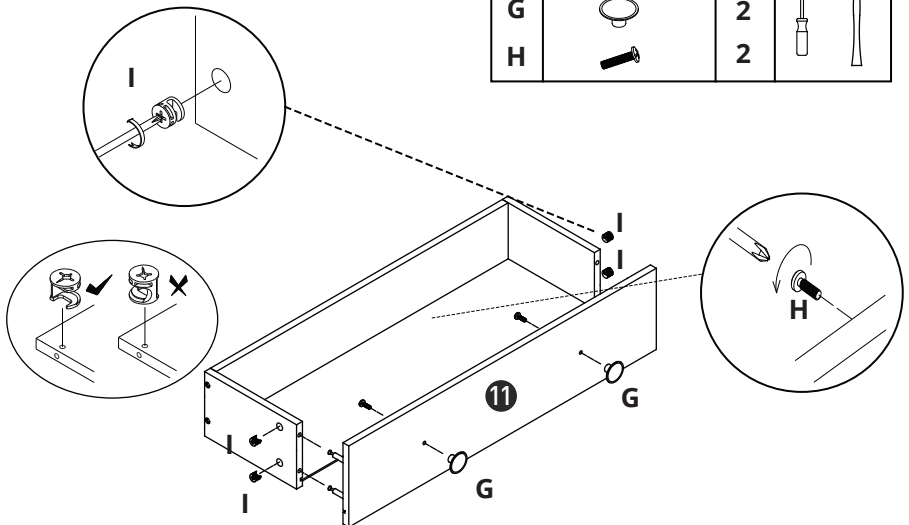
Step 15

A		4	
---	---	---	---



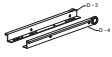


Step 16

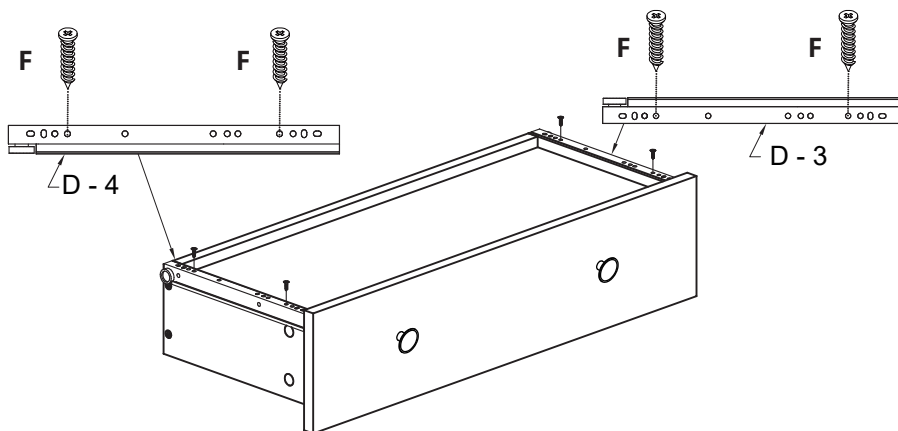
I		4		
G		2		
H		2		



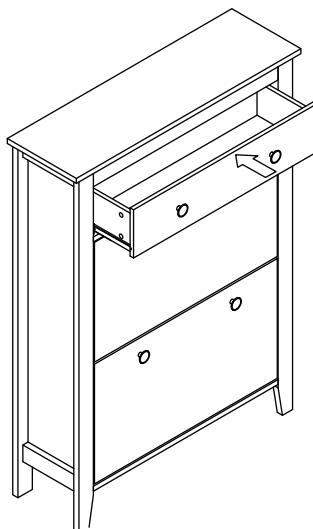
ASSEMBLY INSTRUCTIONS

Step 17

D		1	
F		4	

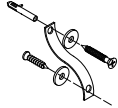



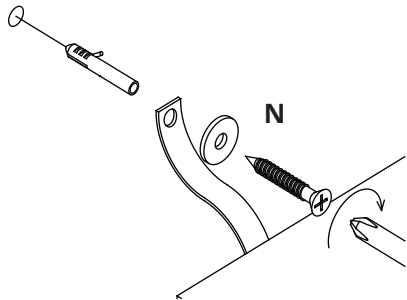
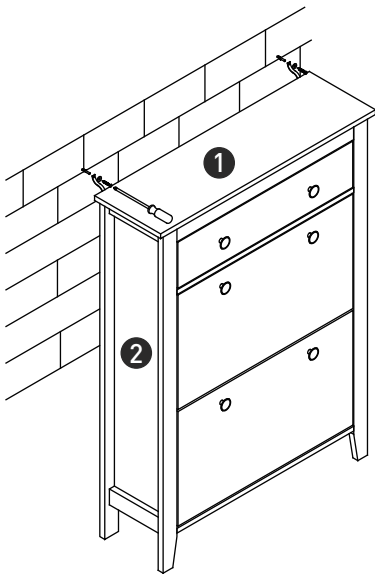
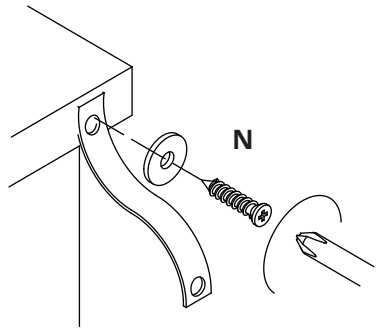
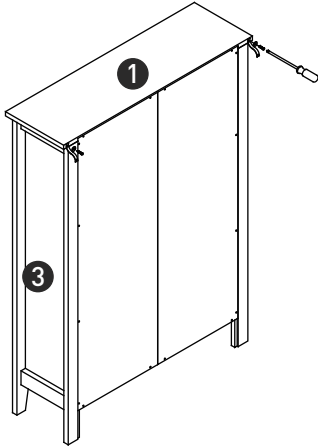
Step 18



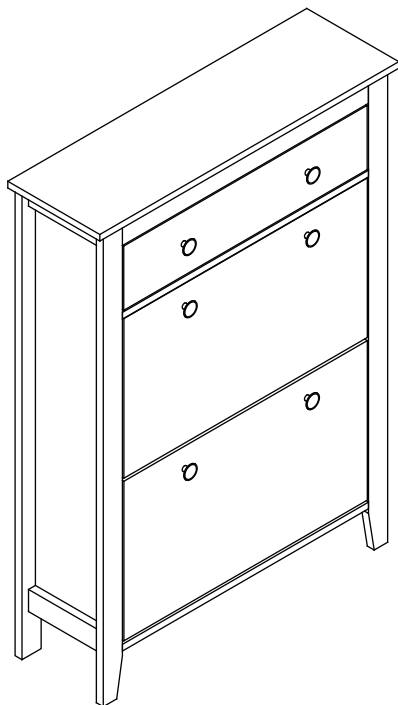
ASSEMBLY INSTRUCTIONS

Step 19

N		2	
---	---	---	---



ASSEMBLY INSTRUCTIONS



Congratulations! Now you have finished assembling the product. There may be some dust or hand marks on your item, we recommend using a standard wood polish to clean this product.

IF YOU FIND A DEFECTIVE PART

We fully stock all parts and components. Any defective part can be quickly replaced. Take note of the defective part number in manual and we will arrange a quick replacement.

COPYRIGHT

All material in this instruction manual is copyrighted
Any unauthorised use may violate worldwide copyright, trademark and other laws.