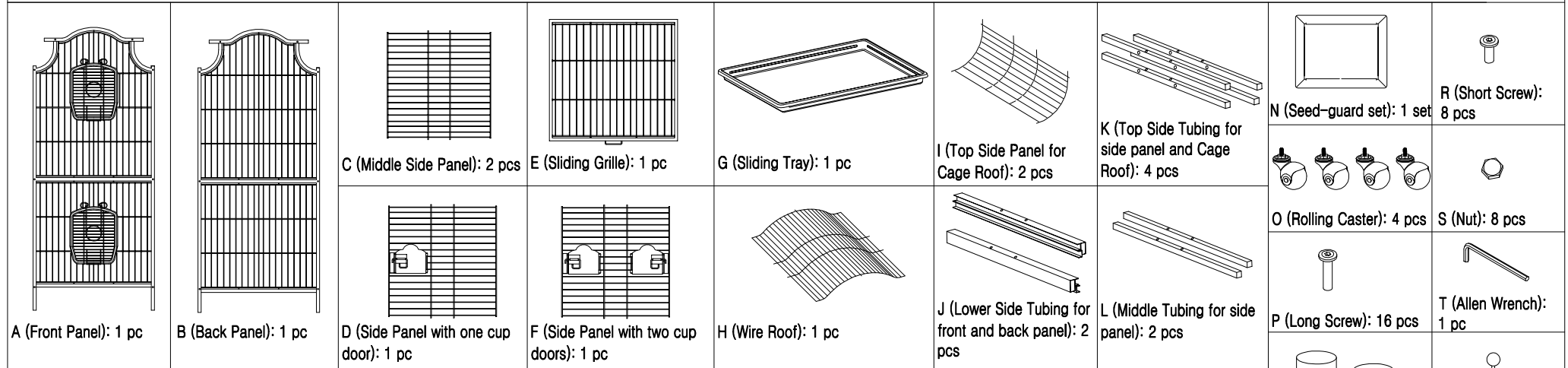


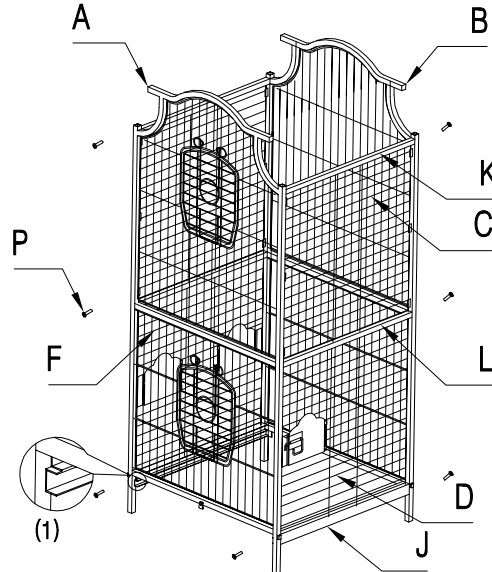


Assembly Instructions



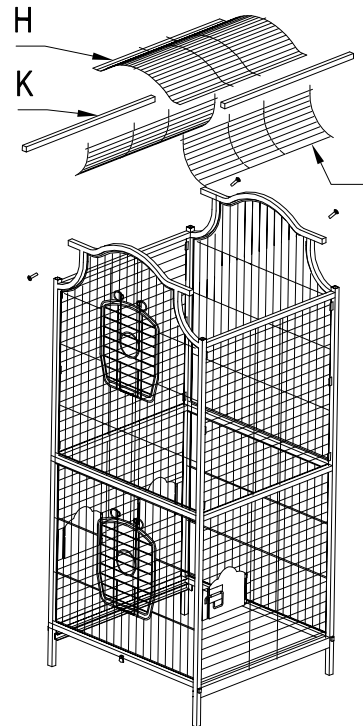
Step 1:

- Assemble part A, B and J with part P. Note: Part J is with two holes and one channel, a) The holes in part J always need to be upward. b) The channel in part J always need to be inward.
- Insert part D, F into part J as shown, and secure part L to part A and B with part P. Note: Part L is with two holes but without channel.
- Insert part C into part L, and secure 2pcs part K to part A and B with part P as shown. Note: a) Part L is with two holes but without channel. b) The holes in part K always need to be inward.



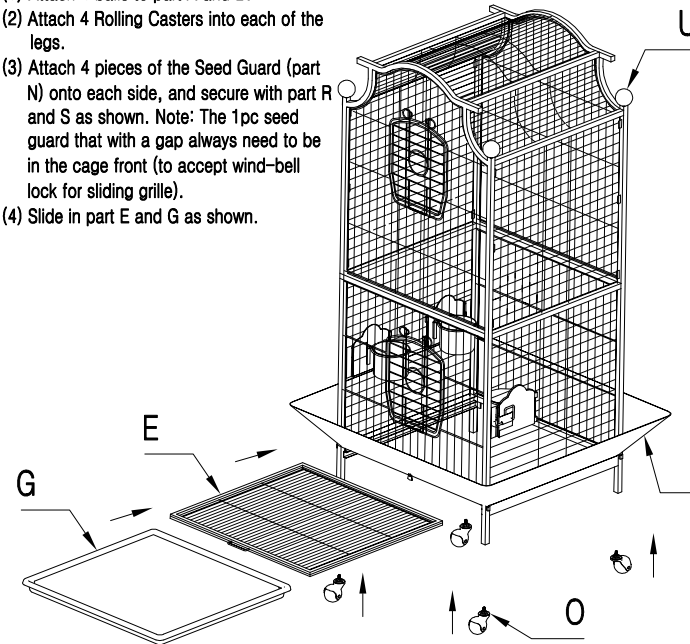
Step 2:

- Insert the extended wires provided in part I and H into the holes of part A and B.
- Secure another 2pcs part K to part A and B with part P. Note: The holes in part K always need to be inward.



Step 3:

- Attach 4 balls to part A and B.
- Attach 4 Rolling Casters into each of the legs.
- Attach 4 pieces of the Seed Guard (part N) onto each side, and secure with part R and S as shown. Note: The 1pc seed guard that with a gap always need to be in the cage front (to accept wind-bell lock for sliding grille).
- Slide in part E and G as shown.



Step 4:

- Put Cup Holder and Cup into position.
- Put Perches into position.

Now, your new cage is ready for use.

