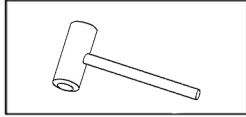


Tools You Will Need: Tools You May Need



Electric Drill



Hammer

Before the Installation

1. Do not throw away packing materials until assembly is complete for small parts may come loose inside the carton during shipment. If parts are missing, please contact us.
2. Assemble this item on a soft surface, such as carpet to protect the finish.
3. Proper assembly of this item requires 2 people.
4. Periodically check to ensure that all connections are tight.
5. It is recommended that installation of the product be done by a qualified licensed furniture assembler.

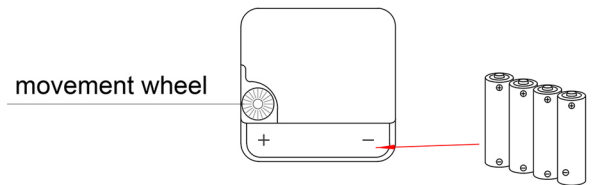
Care and Cleaning

1. To protect the finish, avoid use chemicals and household cleaners.
2. All hot serving dishes should be placed on a pad.
3. Any liquid spilled onto the top should be cleaned up immediately with a damp cloth.

Step 1

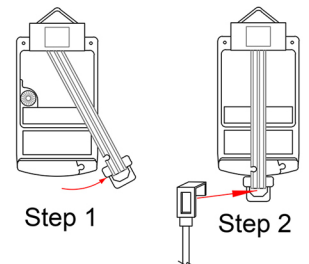
Battery installation:

1. Battery selection, model: AA cell/battery, general size: diameter:14mm, height: 49mm; Please use carbon dry battery (R6P), alkaline battery (LR6) or rechargeable battery is not recommended.
2. When unpacking and taking out the wall clock, do not directly turn the clock face upside down to the ground or the desktop, because it is easy to press the pointer to deform and damage the movement. Please check whether the pointers are deformed: there is no deformation or crossing between the pointers, which can follow the "-" direction of the battery slot on the movement, and the battery is in the same direction, As shown in the figure above; Then remove the pointer protective housing, Adjust the pointer to the local time with the movement wheel.



Pendulum mounted battery:

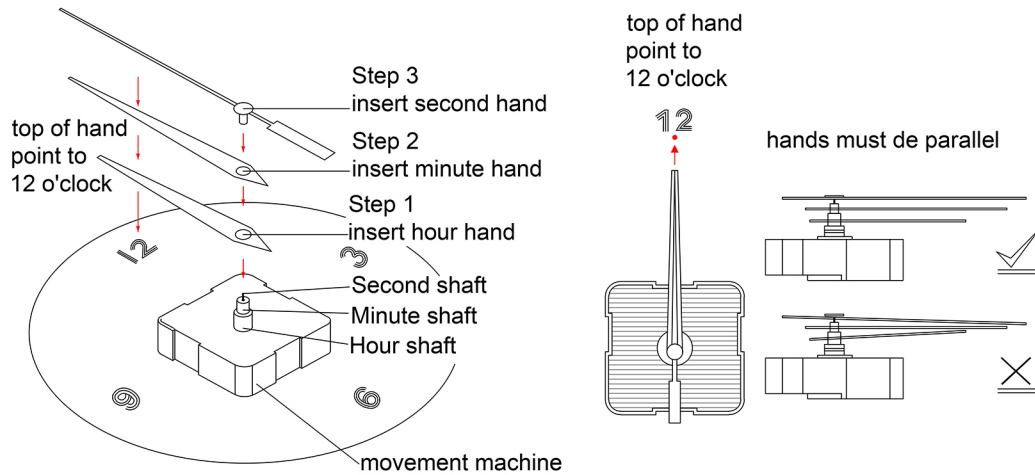
1. Manually remove the buckle on the back of the wall clock See the right figure for specific operation.
2. Then place the clock pendulum in the hanging hole of the pendulum See the right figure for specific operation.



Step 2

Travel time calibration:

1. The movement does not move: The gear on the back of the movement does not rotate. Check whether the positive and negative electrodes of the battery are installed reversely. The battery should be placed in the direction of "-"_+" marked in the battery card slot.
2. The pointer moves and stops, taps and runs again:
 - (1) It may be that the nut fixing the spindle is too tight. Carefully remove the pointer, slightly loosen the nut of the spindle, and then install the pointer. Adjust the pointer to the local time with the movement wheel.
 - (2) It may be that the second hand is inserted too tightly, which causes the second hand plug to rub against the wall of the second core, causing the movement to be unable to operate. Method: Pull out the second hand, run it for 3 days without the second hand, and then check the time. If the time display is accurate, the movement is OK. Insert the second hand again, and be careful not to insert it too tightly.
 - (3) The travel time is too fast: for example, when the clock is at 12 o'clock the hour hand is in the 12 direction. but when the minute hand is in the 1 direction, place the front of the wall clock upward, and do not reverse it; Turn all the pointers to the 11 direction, then turn the movement wheel of the movement, turn the clock to the 12 direction, and then stop. Use your hand to gently turn the minute hand and second hand to the 12 direction, finally install the battery, and use the Adjusting knob of the movement to adjust to the local time.
 - (4) When walking, it is stuck: check whether the pointers are deformed and overlapped. If yes, gently straighten them with your hand to keep each pointer balanced, straight and without crossing. Then use the movement wheel to adjust to the correct time.

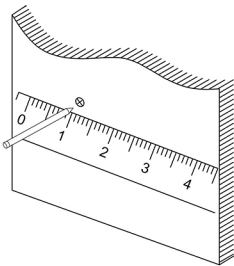


Pointer replacement:

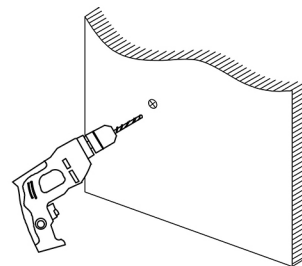
1. Carefully remove the original pointer and prepare a new pointer;
2. First insert the hour hand, with the pointer pointing at 12 o'clock; Then insert the minute hand, with the pointer pointing at 12 o'clock, and finally insert the second hand (except for products without second hand); Gently insert the second hand 1-2mm. Do not press the pointer too hard; As shown in the figure above.
3. Each pointer shall be balanced, straight and without crossing.
4. If the dial has a mask, the mask cannot contact the second hand.
5. Use the movement wheel to adjust to the local time.

Step 4

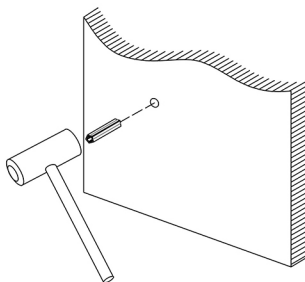
Wall clock installation:



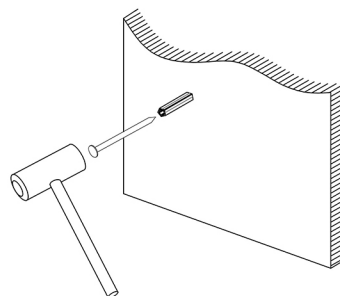
Step 1: Mark the hole position on the wall with a pen.



Step 2: Punch holes at the marked positions with an electric drill, the depth of which is the length of the expanded rubber cap.



Step 3: Plug the expansion rubber cap into the hole.



Step 4: Nail the screw into the expanded rubber cap, with the nail head reserved for 5mm, and hang the product back hook on the screw to finish.