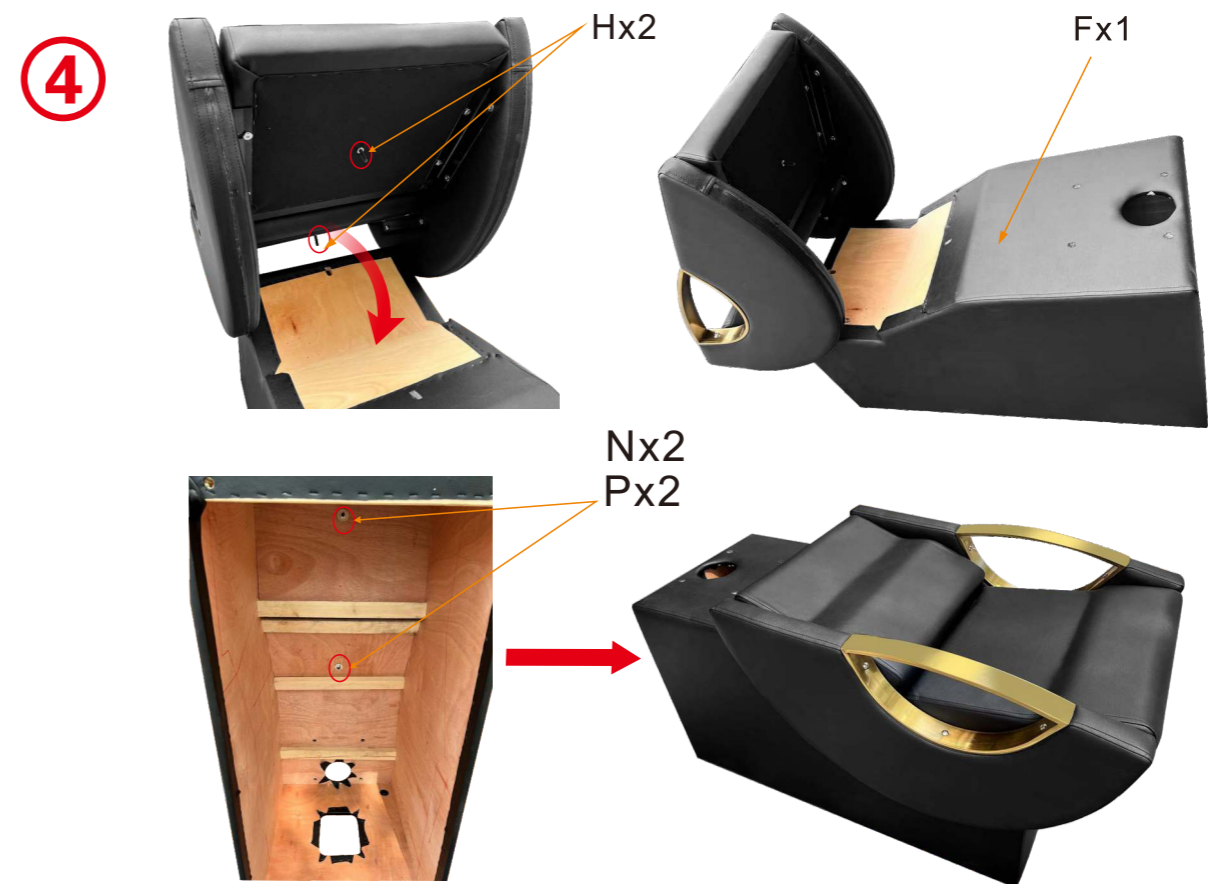
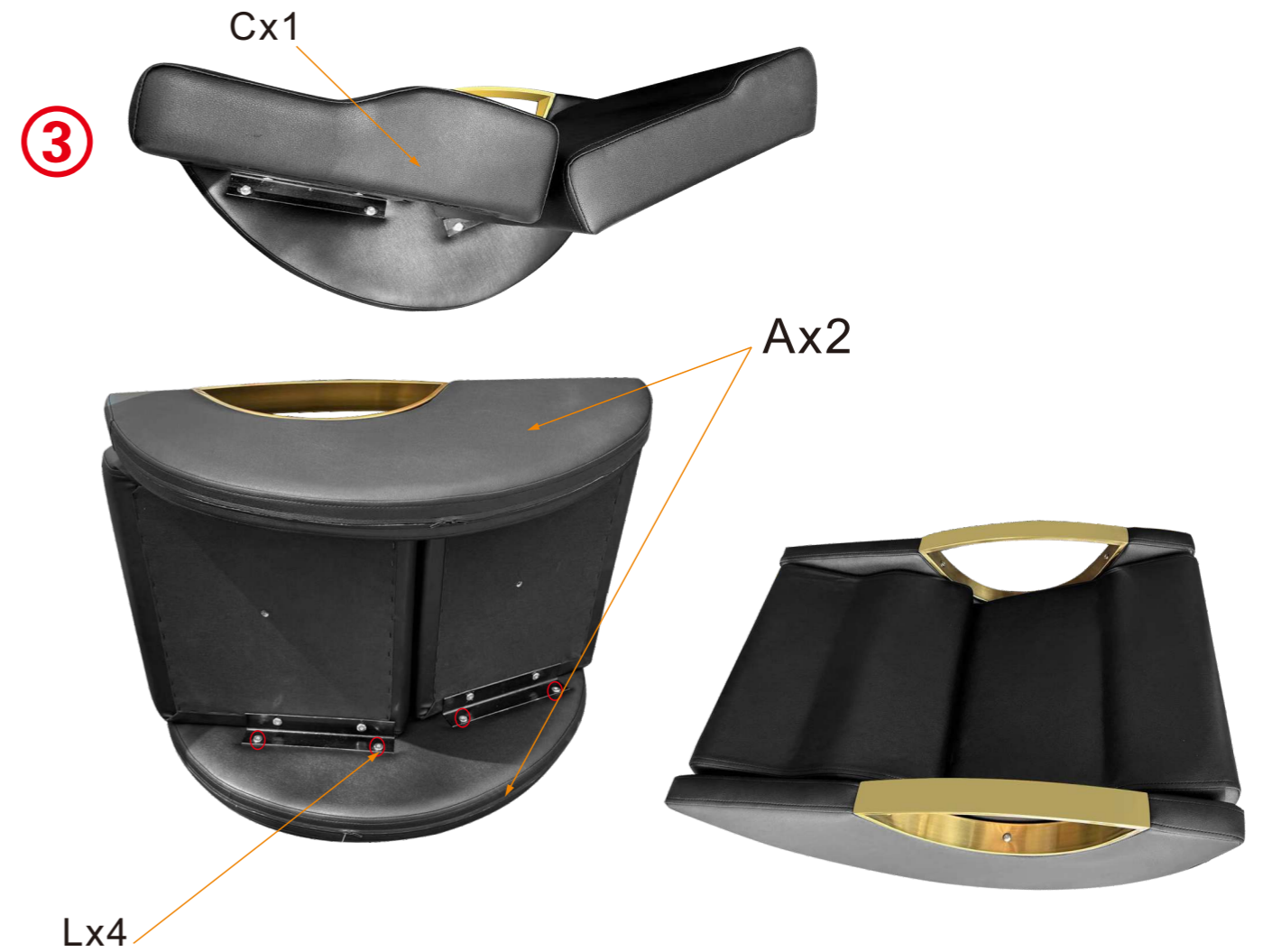
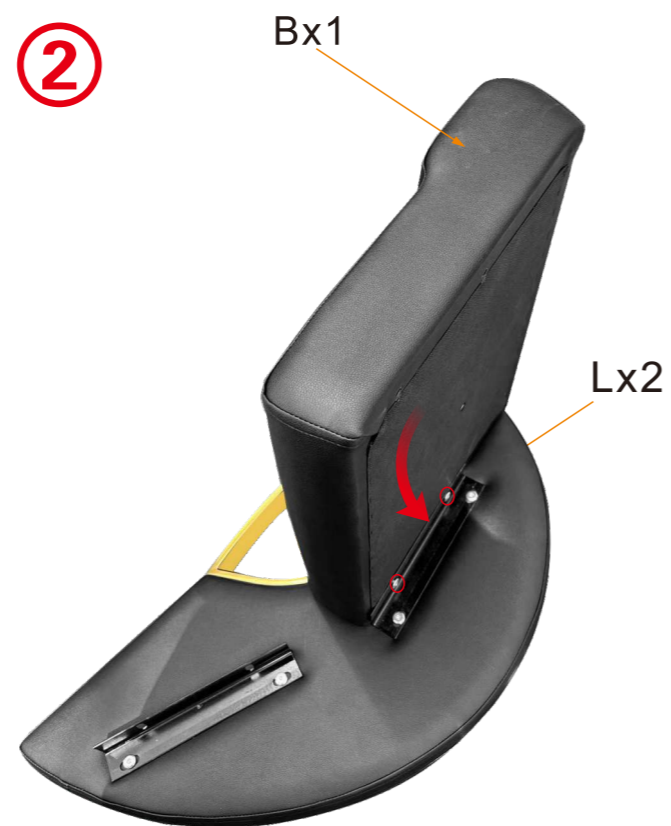
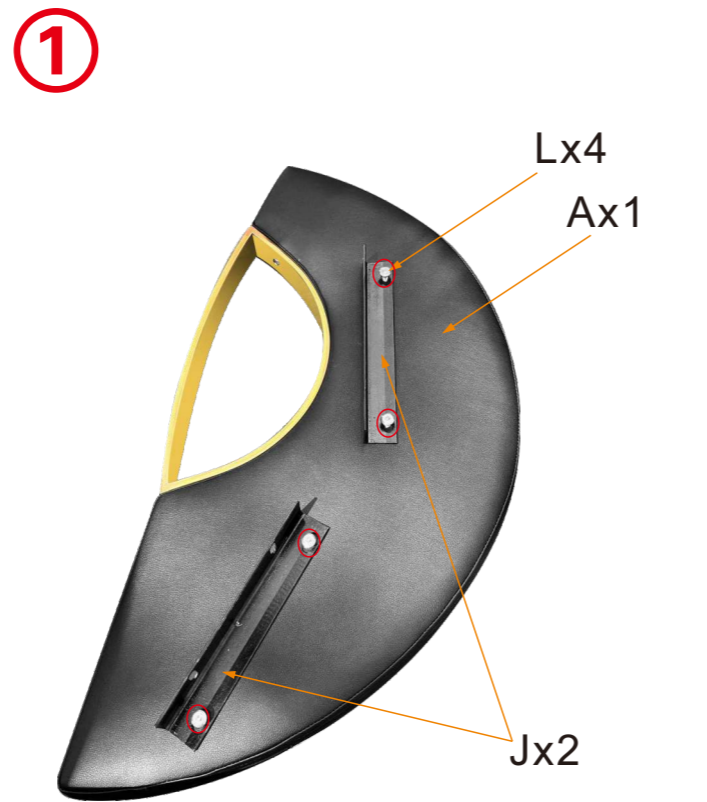
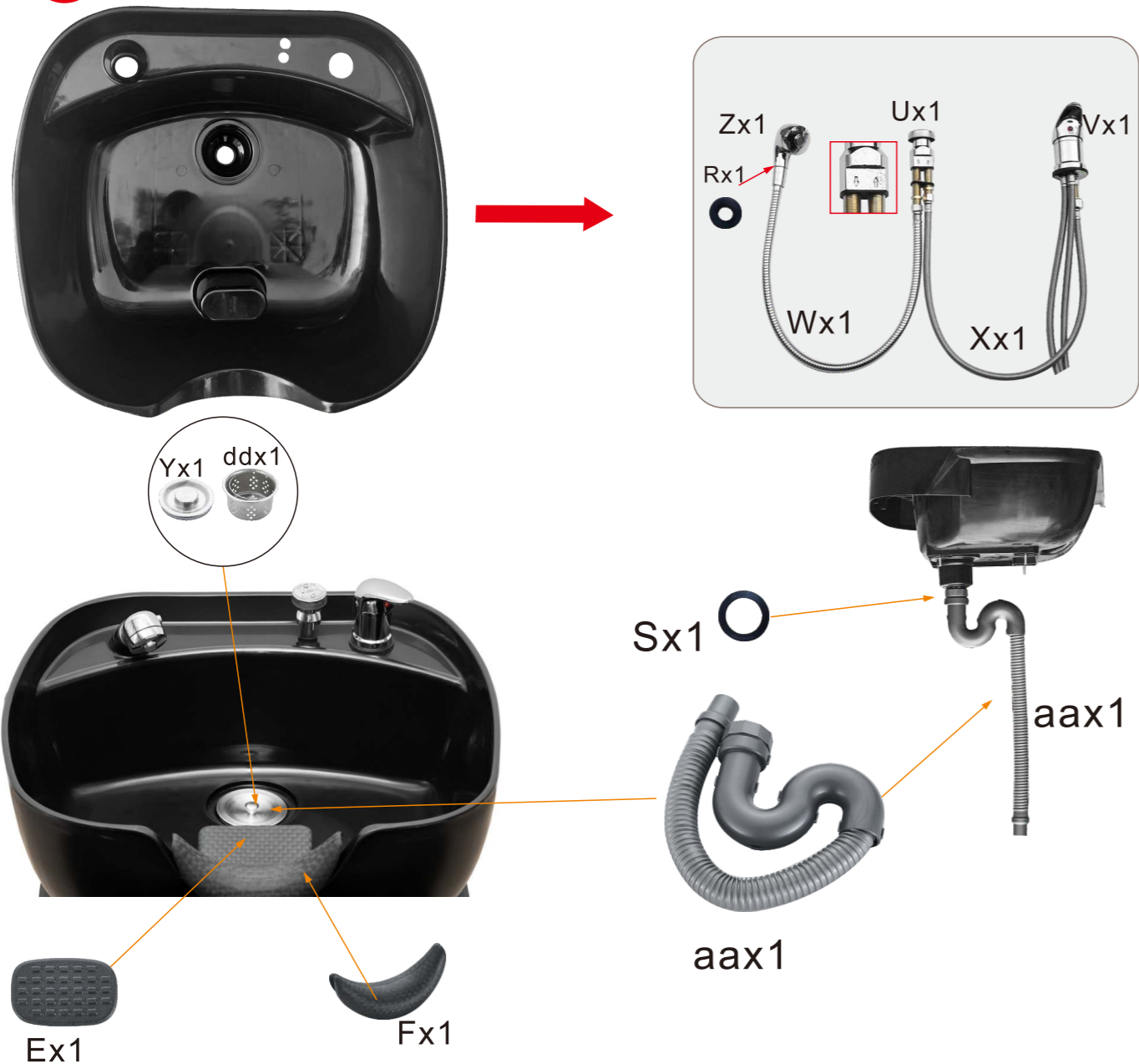


Installation Instructions

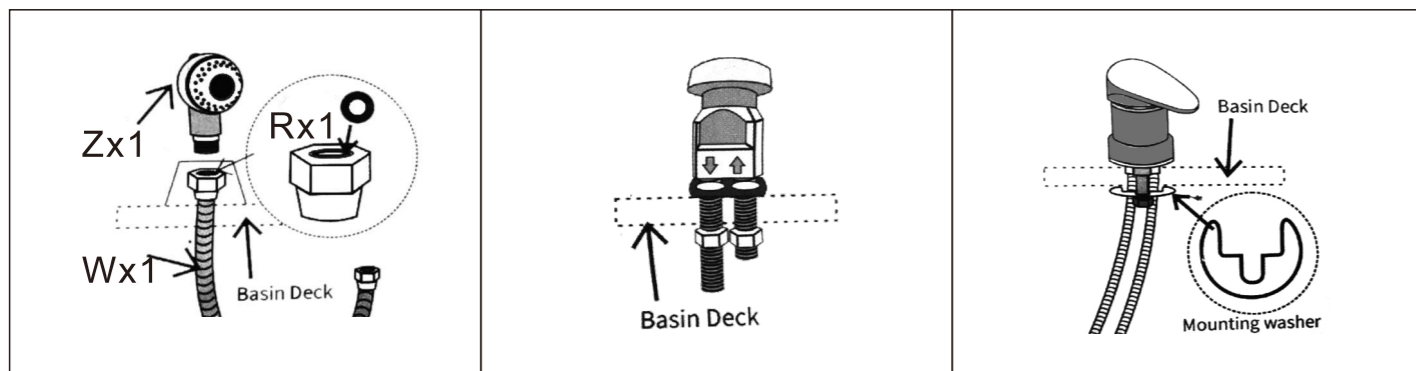
Warm reminder: During the installation process, should not tighten the screws completely, Keep them loose.



5



1. Install the valve(U) on the Basin Deck(G) › You can do it just with your hands.
2. Install the(V) on the basin › You do it with spanner(YY)
3. Inset Rubber washer(R) and connect the Shower Head Pipe(W) with Shower Head(Z), Then connect the end side of Shower Head pipe(W) with the valve(U) which have a down arrow(↓) as picture shows
4. Connect the (V) and the valve(U) which have a UP arrow (↑) with braided Hose(X)



6



Shampoo Bowl and Chair Instruction

[Most important !!!] See the video first! It will save you TWO HOURS.

1. Please DO NOT fix screws tightly before all screws and holes connected.
2. List all the parts, put on the floor for stand by. Watch the installation Video below(Watch the entire video first time)After finished video, then follow the installation videos and manuals, step by step patiently.