

# ASSEMBLY INSTRUCTIONS: Model W17909CH-N Cherry Nightstand

## PREPARATION & HARDWARE



**TIME ESTIMATE:**  
30–45 minutes.

### SURFACE



Assemble on a rug or the shipping cardboard to protect the wood finish.

## INVENTORY CHECKLIST



xN

Cam Bolts



xN

Cam Locks



xN

Wooden Dowels



xN

Leg Bolts (with washers)



Metal Cup Pull



xN

Hex Key/Screwdriver

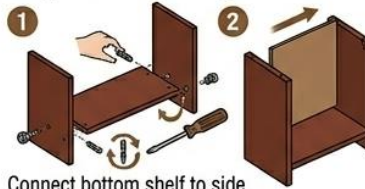
### Step 1: The Side Panels & Glides



Check if drawer glides are pre-installed. If not, screw them into pre-marked holes.

**TIP:** Rotate until shoulder of bolt is flush.

### Step 2: Connecting the Core

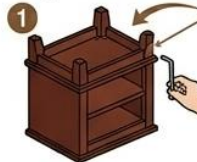


Connect bottom shelf to side panels. Insert & lock cam locks.



Slide back panel into rear grooves. **NOTE:** Finished side faces INWARD.

### Step 3: Attaching the Base & Legs



Most units use a long bolt, flat washer, and spring washer. Tighten with the Allen wrench.

### Step 4: Securing the Top

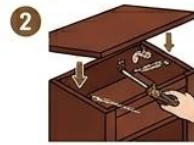


Turn unit back upright. Align top panel cam bolts with holes.

Screw cam bolts into side & top panels

Insert wooden dowels into notches side panel edges.

### Step 4: Securing the Top



Reach inside top opening and tighten cam locks near the top.

### Step 5: Drawer Assembly

#### 1 Sides to Front



Attach drawer sides using cam locks.

#### 2 Bottom Panel



Bottom Panel

#### 3 Back Panel



Screw drawer back using wood screws.

#### 4 Hardware



Hardware

## FINAL TOUCHES



Slide the completed drawer into the top slot. Ensure all connections are secure.



Peeled off any identification stickers and wipe down with a damp cloth.