

Products / Planters / Jardinera

# Jardiniera 10x24x10



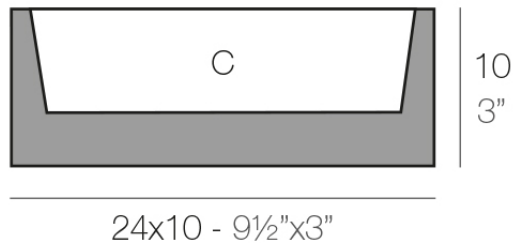
# Info

---

## Description

Pot made of polyethylene resin by rotational moulding. 100% Recyclable. Item suitable for indoor and outdoor use. Available in different finishes.

Weight: 0.4 Kg



JARDINERA Nano 24 x 10 x 10 cm  
 JARDINIÈRE Nano 9½" x 3" x 3"

C = 1 L  
 C = ½ gal

# Finishes

---

## finishes

---

### BASIC

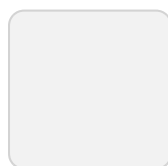
Ref. 41610A



purjai red



orange



ice



notte blue



crema



green



white



black



bronze



steel



anthracite



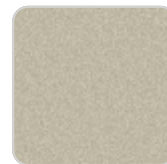
red



khaki



taupe



ecru



beige

### Matt Polyethylene

### LACQUERED

Ref. 41610F



purjai red



white



black



bronze



steel



anthracite



red



khaki



taupe



ecru



beige



champany

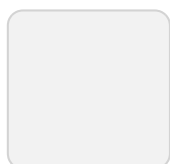
Lacquered Polyethylene

## lighting

---

LIGHT

Ref. 41610W



ice

White internally lit unit with LED technology. Available only in matte ice white finish.

