

7-Light Glass Globe Sputnik Light

Caution: Please turn off power before installation and read the manual carefully, we advise you contact professional electricians to install for safety purpose.

Product Features

Style: Modern/Contemporary/Mid-Century

Material: Metal, Glass

Color: Brass

Base Type: E26-base

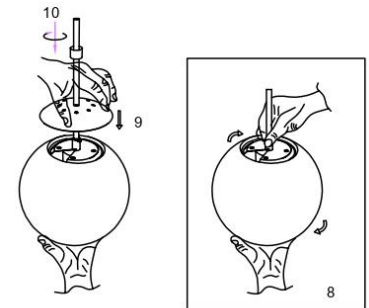
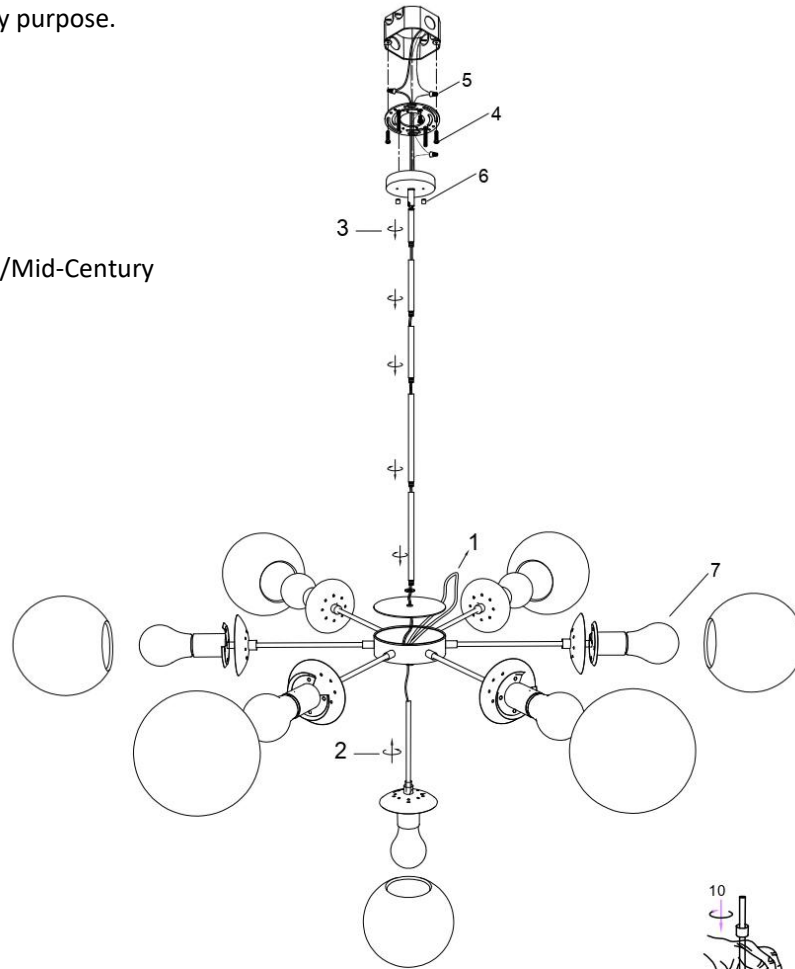
Light Source Included: No

Voltage: 110VAC

Wattage: 40W

Package includes

- 1 x Chandelier
- 1 x Accessory Pack
- 1 x User's Manual



Installation Instructions

1. Insert the lamp wire into the lamp housing for concealment.
2. Tighten the lamp holder onto the lamp housing.
3. Secure the collar ring + loop, hanging poles, and ceiling plate/canopy to the top of the lamp.
4. Use screws to secure the mounting plate to the junction box.
5. Connect the fixture wires to the ceiling wires using wire caps. Ensure that the neutral (white/blue), live (black/brown), and earth/ground
6. Place the ceiling plate/canopy over the mounting plate and tighten the cap nuts securely.
7. Install the light bulbs (bulbs not included).
8. Tilt the glass lampshade at a certain angle and insert it into the notched iron piece.
9. Cover with the metal cap.
10. Twist the iron piece to secure the glass lampshade.

Note: Please use this product accordingly to its intended purpose, do not retrofit or remodeling the product. The warranty does not cover if the failure is caused by the third party product, or natural disasters.