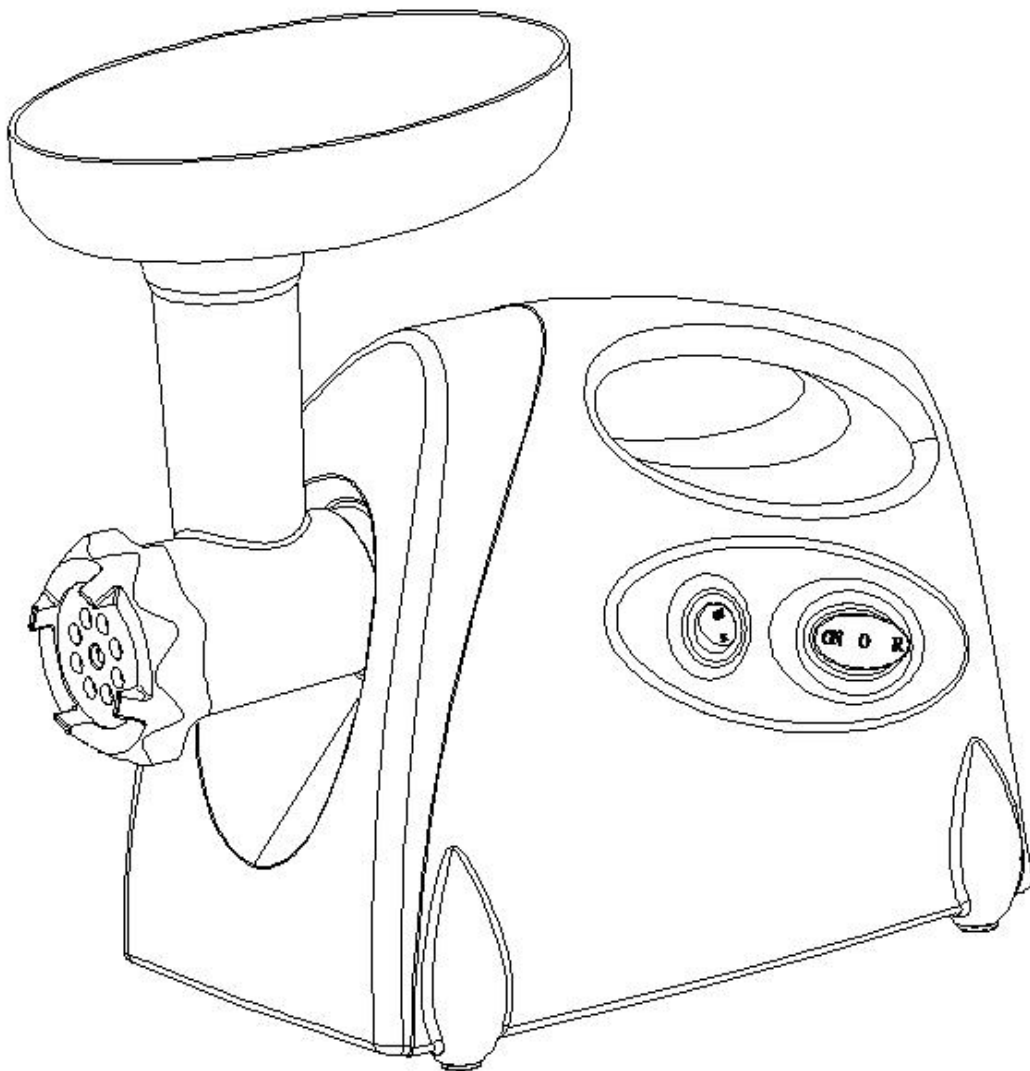


MEAT GRINDER

INSTRUCTION MANUAL

**Please read thoroughly for important safety
and save these instructions**



⚠️ IMPORTANT SAFEGUARDS

Read the operating instructions very carefully before putting the appliance into operation and keep the instructions including the warranty, the receipt and, if possible, the box with internal packing. If you give this appliance to other people, please also pass on the operating instructions.

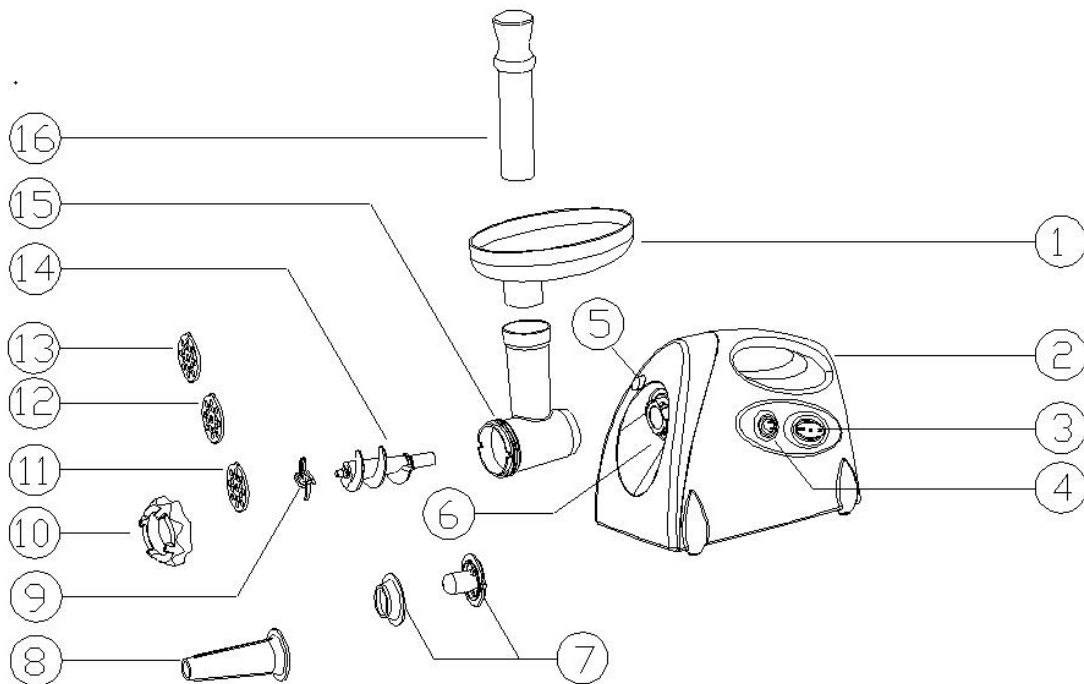
- ◆ Household use only. Do not use for industrial purpose. Do not use the appliance outdoors. Keep it away from sources of heat, direct sunlight, humidity (never dip it in any liquid) and sharp edges. Do not use the appliance with wet hands. If the appliance is humid or wet, unplug it immediately.
- ◆ Switch off the appliance and always disconnect the plug from the power socket (pull on the plug, not on the cable) when the appliance is not in being used, before attaching accessories, cleaning or in case of malfunction.
- ◆ Do not use the appliance without supervision. Always turn the appliance off, when you leave the room. Pull the plug out of the socket. Close supervision is necessary when any appliance is used near children.
- ◆ Regularly check the appliance and cable for damage. Do not use the appliance if it is damaged.
- ◆ Do not attempt to repair the appliance yourself, but refer repairs to an authorized specialist. To avoid danger, faulty power cords must only be replaced by the manufacturer, customer service or a similarly qualified person using an equivalent cable.
- ◆ Only use original accessories.
- ◆ Never feed food by hand. Always use food pusher.
- ◆ Do not fix the cutting blade and cutting plate when using kibbe attachment.
- ◆ Do not grind hard food such as bones, nuts, etc. Do not grind ginger and other materials with hard fiber.
- ◆ Reverse function is prohibited while the appliance is operating (For example switch “ON” knob to “R” knob or on the contrary), wait at least one minute until grinder has come to a complete stop, otherwise it may cause an abnormal noise, vibration or a transitory electric spark in the appliance. It could result easily damage to appliance and make a user frightened.
- ◆ After use, there would be a little food left in the grinder head. This is normal. There might be a bit of black metal powder

adhering to the food ground in the end. Please pick them out and throw away, do not eat them.

- ◆ This appliance is not intended for use by persons (including children) with reduce physical, sensory or mental capabilities, or lack of experience and knowledge, unless they have been given supervision or instruction concerning use of the appliance by a person responsible for their safety.
- ◆ If the supply cord is damaged, it must be replaced by the manufacturer or its service agent or a similarly qualified person in order to avoid a hazard.
- ◆ Observe the following: Special Safely Instructions.
- ◆ Keep packaging out of the reach of children (plastic bag, cardboard box, polystyrene, etc.)
- ◆ Do not allow small children to play with the foil. Danger of suffocation.

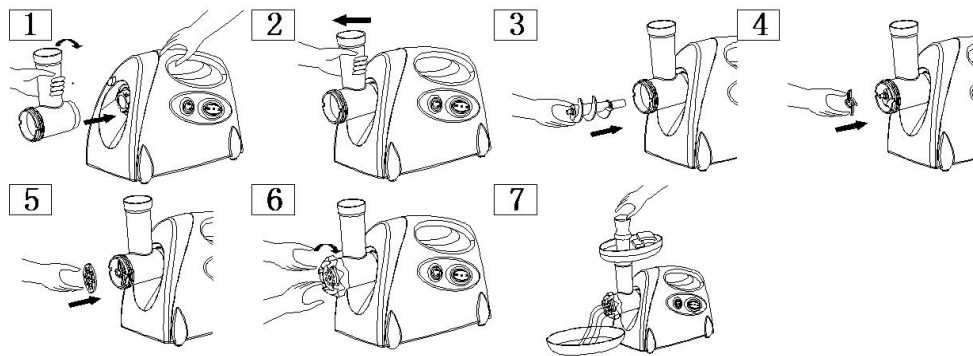
⚠ATTENTION!

Continuous running of meat grinder should be not more than 10 minutes with the following 10 minutes interval for motor cooling

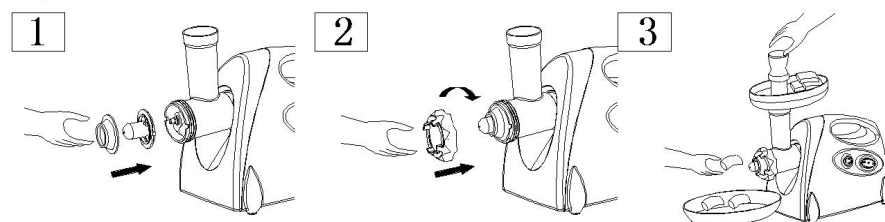


Arrangement of control elements

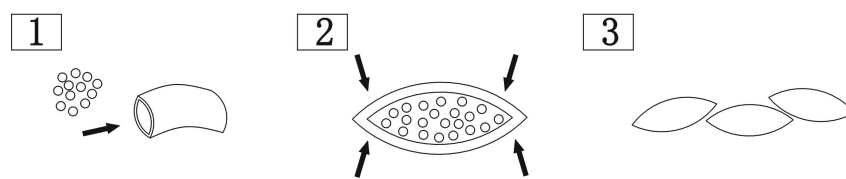
1. Food tray
2. Motor housing
3. Switch ON/O/R (On/Off/Reverse)
4. Safety switch R/ON (Forward/Reverse)
5. Unlock button
6. Scroll housing inlet
7. a + b Kibbe Attachment
8. Sausage attachment
9. Knife
10. Fixing ring
- 11-13. Cutting plate (fine/ medium/ coarse)
14. Scroll
15. Scroll housing
16. Food pusher



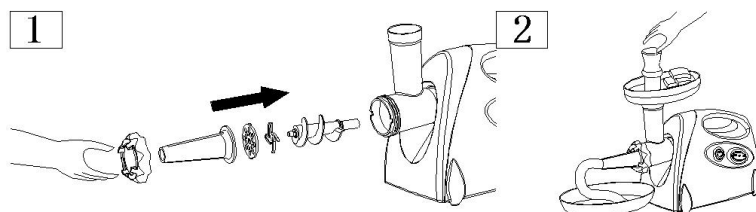
A



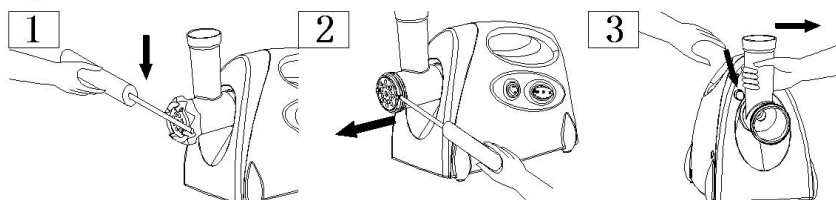
B



C



D



- ◆ Check that voltage indicated on the rating label corresponds the mains voltage in your home.
- ◆ To clean the unit, wipe with a cloth dampened with a dilute neutral detergent or water, then wipe clean with a dry cloth.(except body)
- ◆ Before plugging in, ensure the “ON/O/ R” switch(On/Off/Reverse) is turned to "O" position(Off).

Assembly of the meat grinder

Please also observe our illustrations under “1-7”.

1. Insert the scroll housing into the mounting on the motor.
2. Lock the scroll housing into position with the Unlock button.
3. Insert the scroll.
4. Insert the knife with the sharpened edge outwards onto the shaft of the scroll.
5. Select a cutting plate.

NOTE:

- *Slightly grease the cutting plate beforehand with vegetable fat.
 - *The guides on the cutting plate are located in the recesses on the scroll housing.
6. Support or press the centre of the cutting plate with one finger then screw the fixing ring until tight with another hand. Rotate the catch clockwise. Do not over tighten.
 7. You can now attach the food tray with whatever you want to grind.
 8. The air passage at the bottom and the side of the motor housing should be kept free and not blocked. Locate the unit on a firm place.
 9. Cut all foods into pieces (Sinewless, boneless and fatless meat is recommended, approximate size: 20 mm x 20 mm x 60 mm) so that they fit easily into the Scroll housing opening.
 10. Plug in and turn the “R / ON” switch to "ON" position, then turn the “ON/O/ Reverse” switch to "ON" position.
 11. After use switch the unit off and unplug it from the power supply.

Mounting of the “Kibbe” attachment

NOTE

Tubes of meat or dough paste can be made with the “Kibbe” attachment.

Please also observe our illustrations under “A and B”.

First proceed as described in “Assembling the meat grinder” item 1 to item 3(A).

1. Position the 2-piece Kibbe attachment on the shaft of the scroll.

NOTE

The guides on attachment (A) are located in recesses on the scroll housing.

2. Rotate the catch clockwise.

3. You can now attach the food tray with your meat or dough mixture.

See below “Electrical connection”.

Assembly of the sausage attachment

Please also observe our illustrations under “C”.

1. Position the sausage attachment on the scroll housing.

2. Rotate the catch clockwise.

3. You can now attach the food tray with whatever you want to grind.

See below “Electrical connection/Application instructions”.

Electrical connection

Ensure that the function switch is set to “0”<off>.

Connect appliance to correctly installed and earthed socket 220-240V,50/60Hz.

The switches, the return

The appliance is equipped with a forward and return function. If the scroll should block, you can use the return function, in order to release it.

For your safety, the forward and return functions have been combined with two switches.

Forward: Move the safety switch (4) to “ON” and the switch (3) to “ON”. The appliance is in the “Forward” mode. Switching to the return mode is not possible.

Return: Move the safety switch (4) to “R ” and the switch (3) to “R(Reverse)”. The appliance is in the “Return” mode. Switching to the forward mode is not possible.

Switching off

Move the safety switch (3) to “O” and pull the power plug.

Application instructions

Making sausages

- * You can use either natural or artificial intestines.
- * If you have decided for natural intestines, soak them beforehand for some time in water.
- * Make a knot at the end of the intestine.
- * Push the intestine over the sausage attachment.
- * The sausage mass is pressed through the sausage attachment and the sausage intestine is filled.
- * Make sure that the sausage intestine is filled “loosely”. Since otherwise the intestine could burst because the sausage expands when cooking and or frying.
- * After the first sausage has achieved the require length, press the sausage together at the end of the sausage attachment with your fingers.
- * Until you have acquired routine, you can switch the appliance off after each sausage section.
- * Twist the sausage once or twice around its own axis.

Cleaning and maintenance

- Always pull the power supply plug before cleaning and wait until the appliance has cooled down.
- Do not use a wire brush or other abrasive items.
- Never use sharp or scouring cleaning materials.

⚠ WARNING!

Never immerse the motor housing in water for cleaning.
It could result in an electric shock or fire.

Motor housing

- * Only wipe the motor housing with a damp cloth and dry with a dry cloth after.

Food trav. scroll, scroll housing and all accessories.

△ ATTENTION!

- * Do not clean these parts in the dishwasher.
- * The surfaces could become lackluster.
- * These parts can be cleaned by hand in the wash basin.
- * Rinse with clear water and dry the parts.
- * Wipe all the cutting parts by vegetable oil -wet cloth.