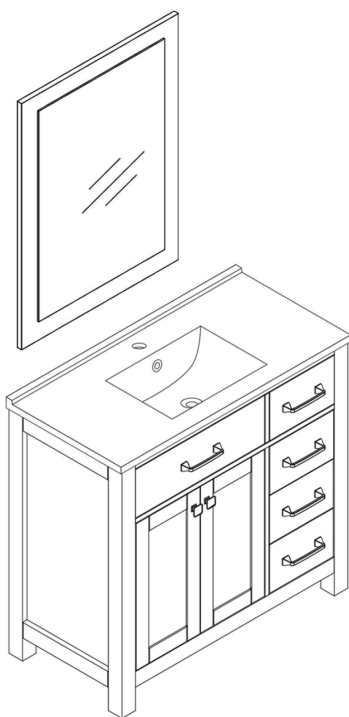
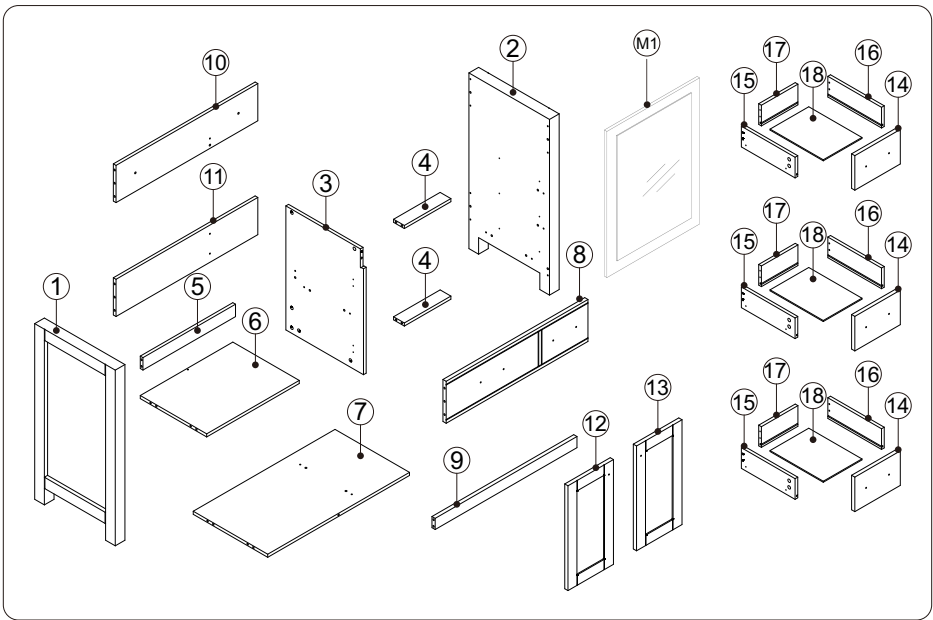














Installation

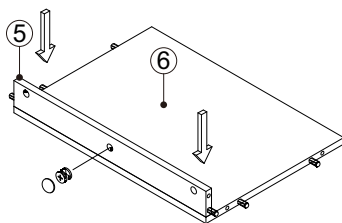
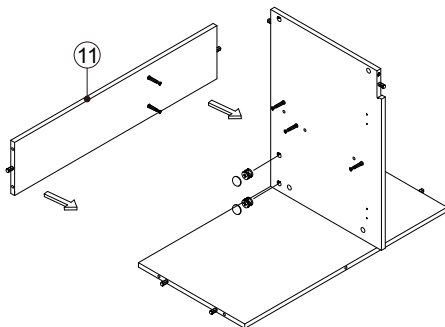
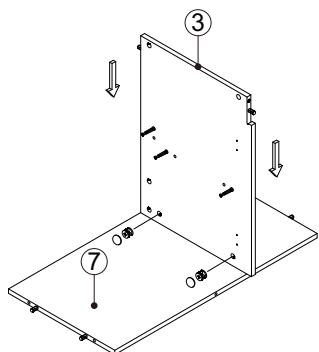


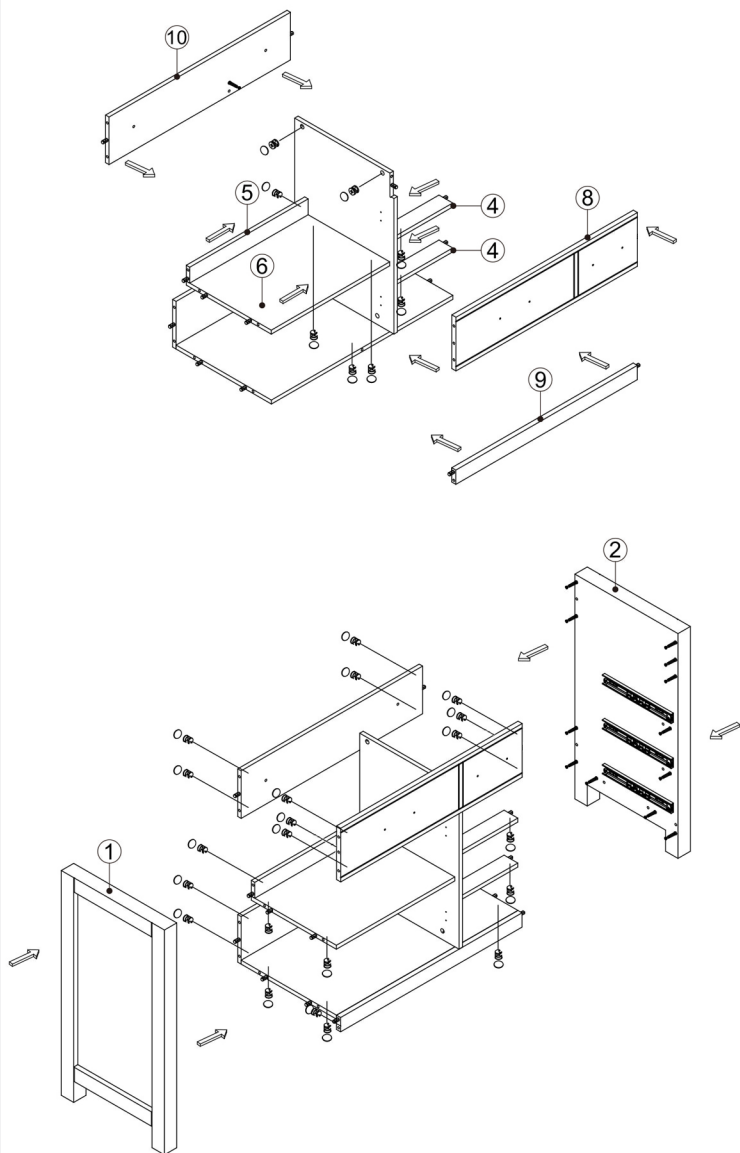


No.	Description	QTY
1	Left Side Board	1
2	Right Side Board	1
3	Connect board 3	1
4	Connect board 4	2
5	Connect board 5	1
6	Shelf	1
7	Bottom board	1
8	Connect board 8	1
9	Connect board 9	1
10	Connect board 10	1
11	Connect board 11	1
12	Door 12	1
13	Door 13	1
14	Drawer front	3
15	Left side board for drawer	3

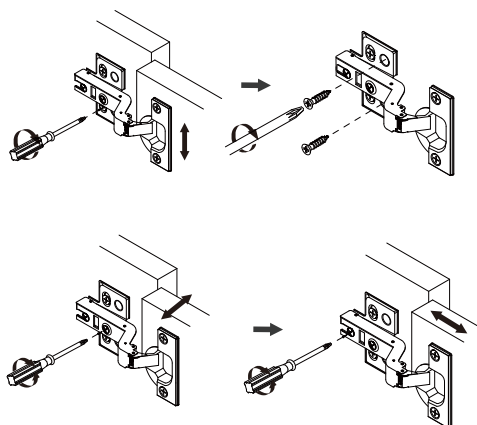
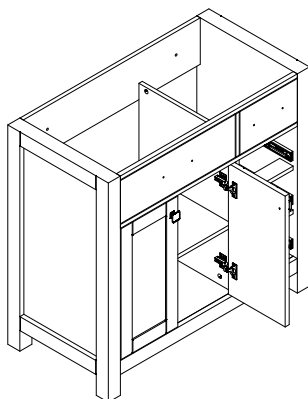
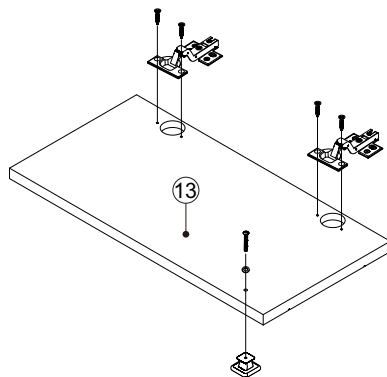
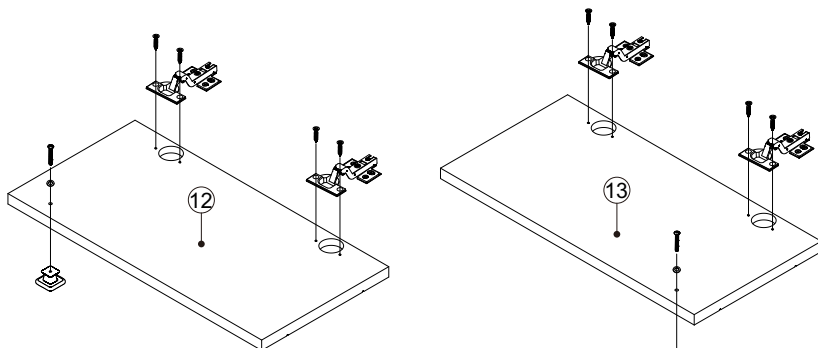
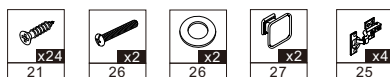
M1	Mirror	1
16	Right side board for drawer	3
17	Back board for drawer	3
18	Bottom board for drawer	3
19	 Three-in-one Connector	50
20	 Wood Plug	24
21	 Screws M4x14	60
22	 Slider	6
23	 Foot nail	4
24	 Screws M4x30	12
25	 Hinges	4
26	 Handle Screws M4x22	12
27	 Handle 27	2
28	 Handle 28	5
29	 Screws For Fix On The Wall M6x60	2
30	 Screws M5x40	2

Step 2



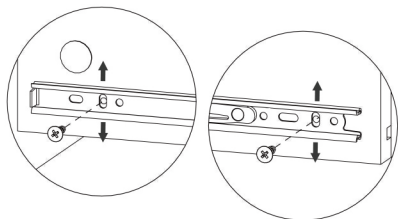
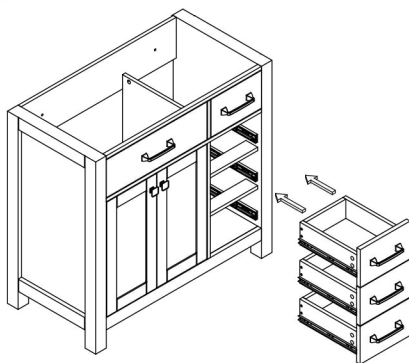
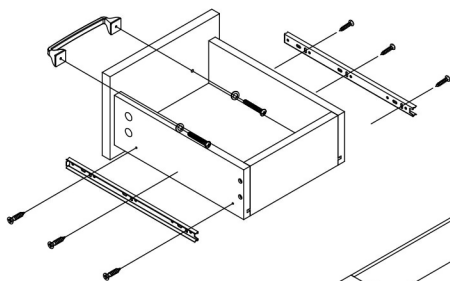
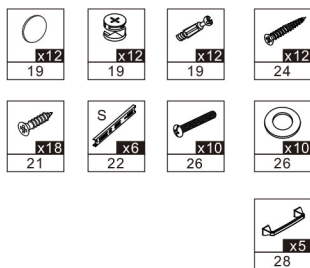
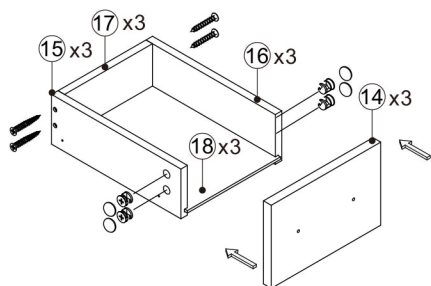


Step3



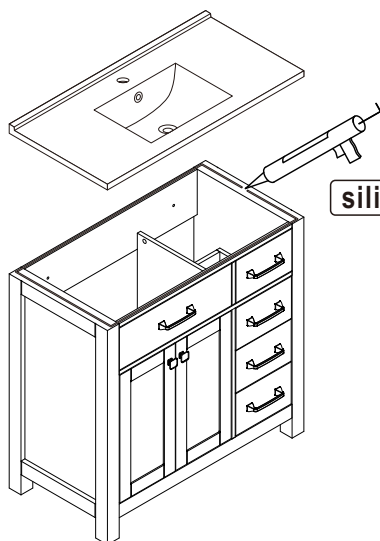
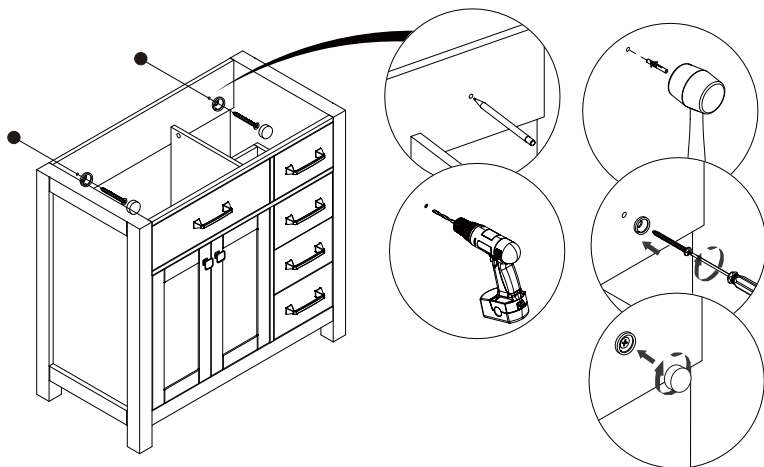
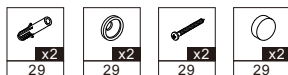
Adjust the screws as shown on the sketch map to ensure all the door gaps are in the same level.

Step4



If the drawers are not in the same level, please adjust the screws in the drawer box.

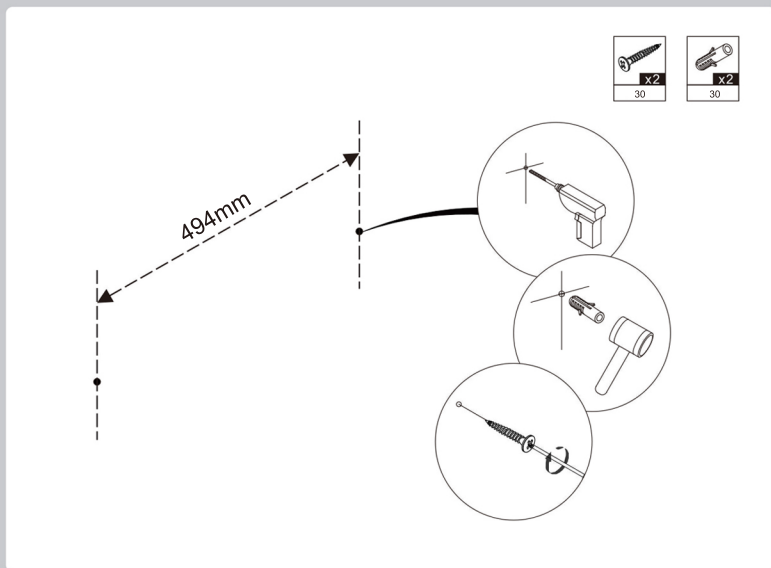
Step5



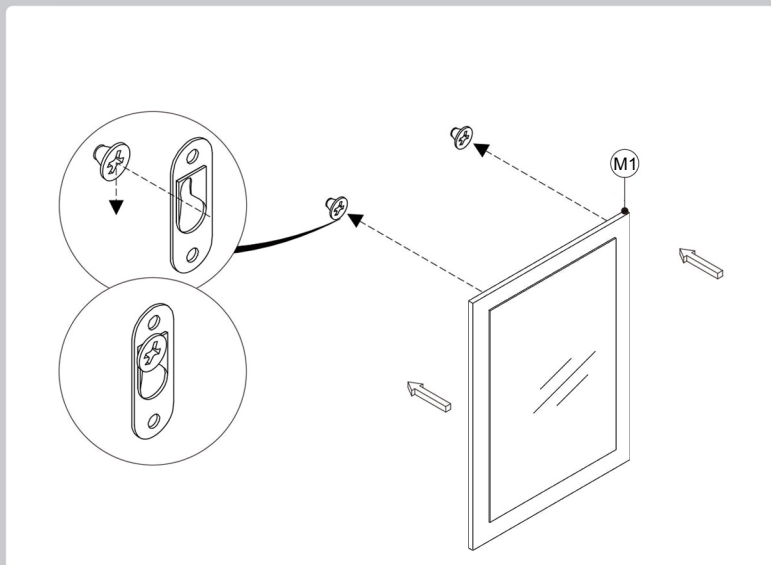
silicone transparent

Set aside for 24 hours.

Step 6



Step 7



Security/ Notice

- Fasten screws loosely during initial assembly. Do not firmly tighten the screws until the item is completely assembled.
- Be aware that some parts are heavy and have sharp edges.
- If any parts are missing, broken, damaged, or worn, stop using this item until repairs are made and/or factory replacement parts are installed.
- Reconfirm that all bolts and screws are secure every 90 days.
- Do not use this item in a way inconsistent with the manufacturer's instructions as this could void the product warranty.

Warranty Guidelines

- Warranty period is determined by the date of shipment for factory direct purchases or date of purchase from an authorized reseller. Please save a copy of your purchase receipt.
- If this product or any associated parts are found to be defective or missing at the time of receipt, will repair or replace, at its option, the defective parts at no charge to the original purchaser. Replacement parts or repaired parts shall be covered for the remainder of the Original Limited Warranty Period. All shipping costs will be the responsibility of the seller.
- Continuous free technical support is provided, including online diagnosis and troubleshooting to users' problems, and coming up with solutions in time. In order to process your claim, please upload a copy of your receipt along with AT LEAST 2 photos of the issue/damaged parts. Otherwise, the supplier reserves the right to refuse replacement parts or credit.
- If a warranty claim is made 30 days after purchase for missing or defective parts, the consumer is responsible for the costs of parts and shipping.