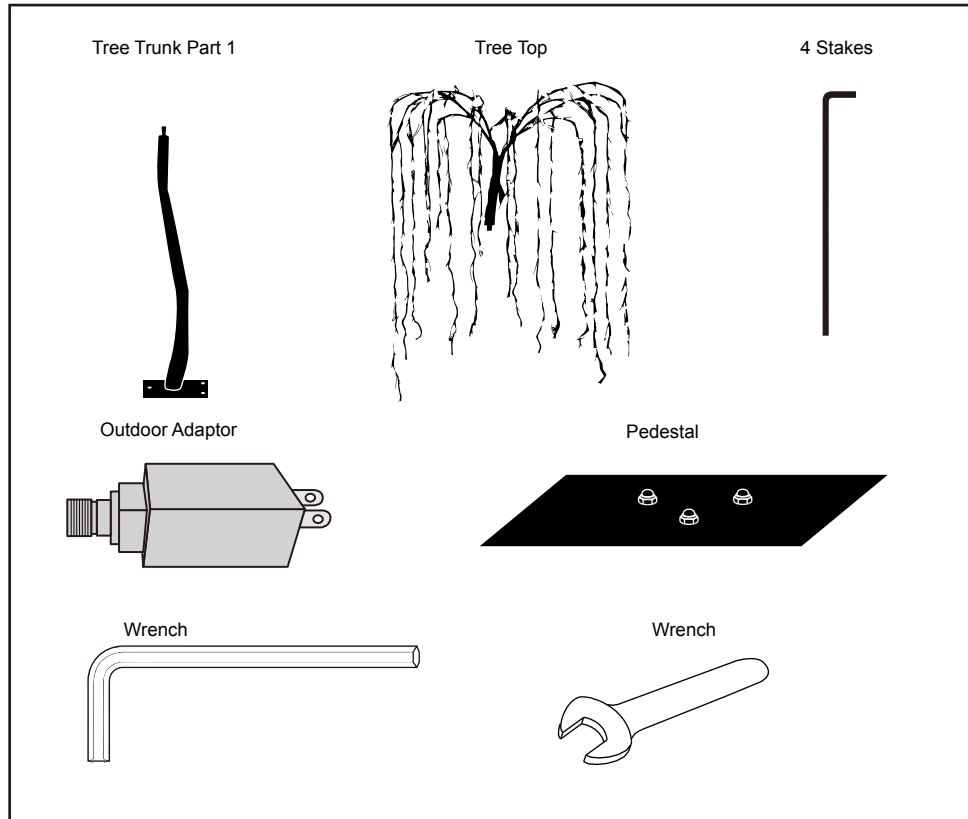


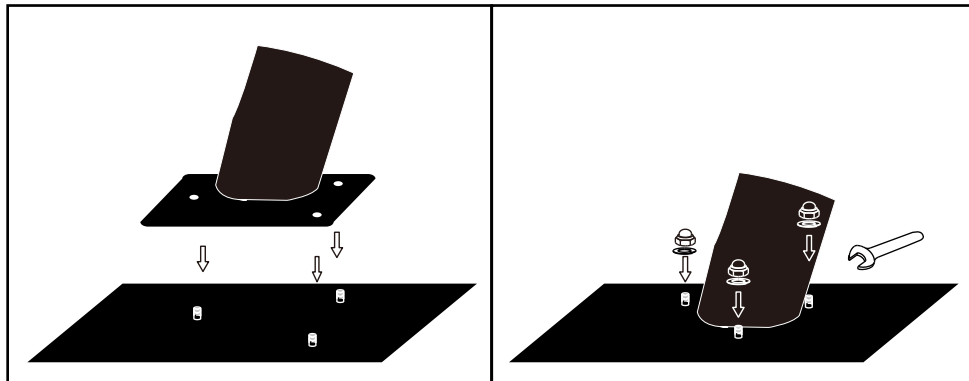
INSTRUCTION

DIRECTION FOR INSTALLATION

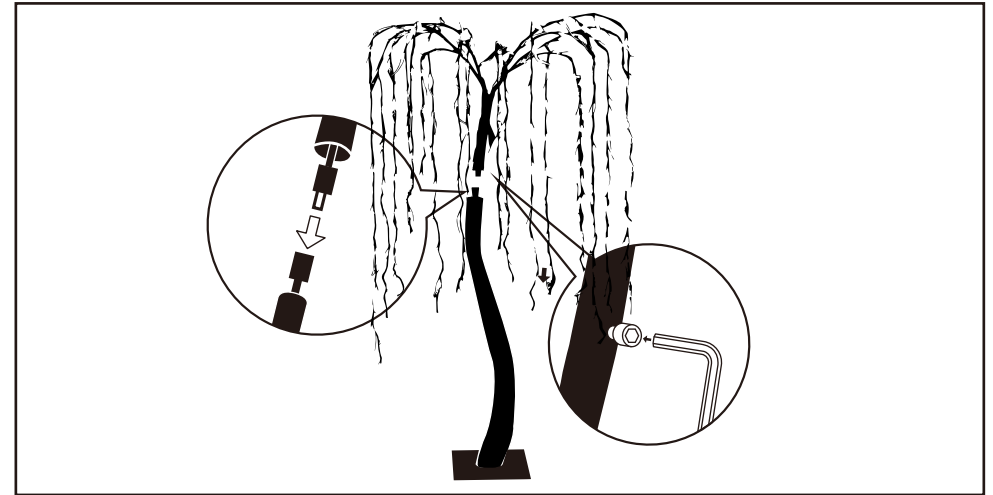
1. Carefully remove product from package;



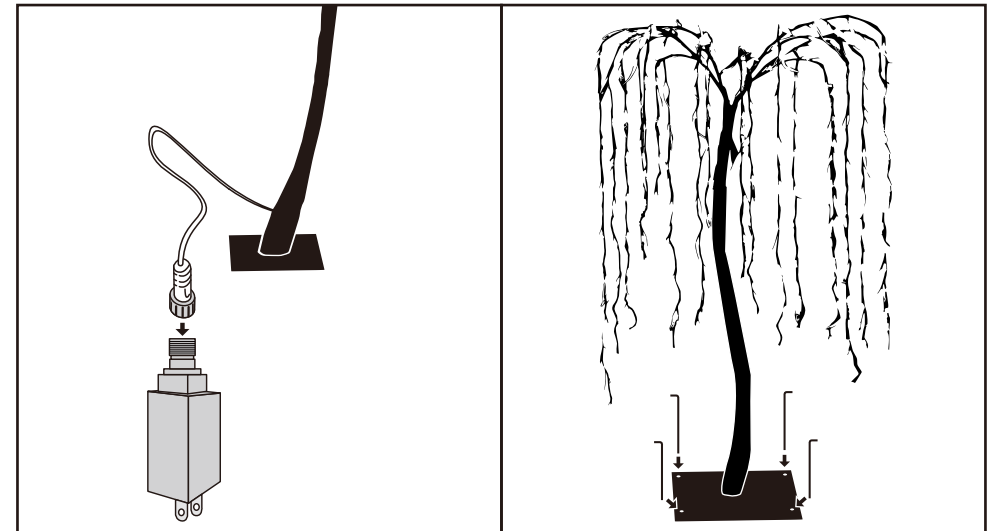
2. Adjust the trunk to fit the nuts on the base and fix it with screws by wrench included.



3. Find the wire joints inside the upper & bottom trunks. Connect up the joints, insert the upper trunk into the bottom one and fix the trunk with the screw preinstalled by Allen wrench.



4. Connect the power adapter and then plug in the outlet. Fix the base by ground stakes.



The tree can be shaped by bending and arranging the branches into desired position to give it a natural appearance!

WARNING!

- This product contains small parts that may cause suffocation if swallowed by children.
- Supervise children when using the lights,
The product is not a toy
- Plastic bags can be dangerous. To avoid danger of suffocation, keep this bag away from babies and children.