




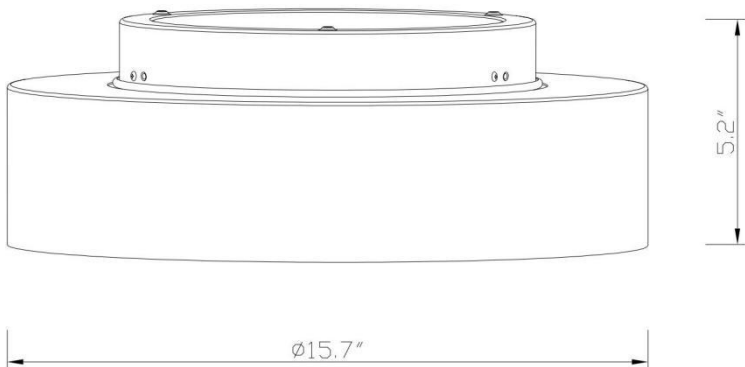
## Introduction

Do not discard any contents until after assembly is complete to avoid accidentally discarding small parts or hardware.

### Package includes

NO	Description		QTY
A	Canopy cover		1
B	Shade		1
C	glass Shade		1
D	Nut		2
E	Green Screw		1
F	Screw		2
G	metal plate		1
H	Wiring cap		3
I	Screw		3

## Product Size



## Specification

Product Name	Flush Mount Lighting
Max Wattage	60 W
Bulb Base	E26
Number of bulbs required	3
Product Size	L15.7" x W15.7" x H5.2"
Product Material	Metal
Base Material	Metal
Shade Material	Glass

## Assembly Instructions

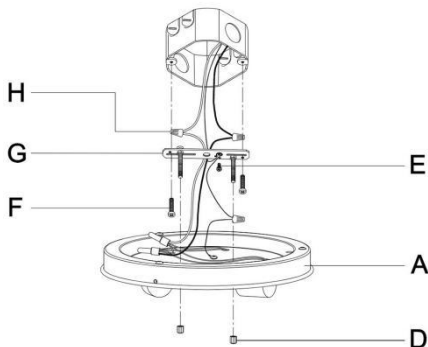
1.Screw the metal plate to the connecting box:

- mount the metal plate G to the connecting box with screws F
- connect the wires use wiring cap H(color corresponds to the color)
- mount the ground wire to the metal plate with screws E

2.Mount the canopy cover to the ceiling:

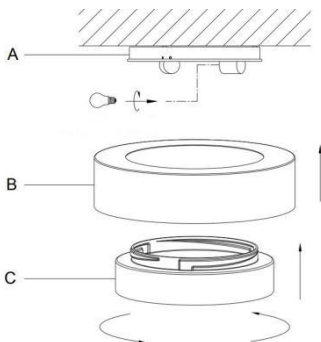
- pass the canopy A through metal plate screws and screw back nuts D(screws remain inserted in the plate).

3. Screws the E26 base light bulbs.(bulbs not include)

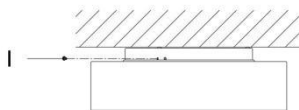


#### 4. Mount the shade:

- put the metal shade B onto the glass shade C.
- position the glass shade as parts without grooves "C" match with holes "I" on the canopy then fit the glass shade into the canopy and slide it to the right to secure the assembling (the nib on the canopy will be locked in the grooves).



- #### 5. Finalize the assembly by gently inserting 3 screws at the edge of the canopy as an extra safety hold of the glass shade (do not force or over-tighten the screws as it may cause the glass shade to break).



Note: To change light bulbs, proceed to the same steps 4 and 5 but reverse.