

The Southshore Difference

✓ Southshore Typical Quilts ✗

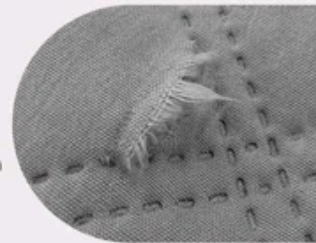


Durable Stitched Quilting

Traditional stitching keeps fill secure and prevents shifting.

Embossed Pattern

Adhesion used to form the pattern may weaken over time.



Quilted Both Sides + Envelope Closure

Fully quilted front and back with a clean envelope finish.

Front Quilted Only

Back side often left plain with no quilting.



Oversized for Better Coverage

Designed larger to provide fuller drape on your bed.

Standard Size Coverage

Smaller sizing may leave less coverage on the bed.



Our Full/ Queen oversized quilt is 98 inches wide x 98 inches long

Standard Queen Size is 86 inches wide x 86 inches long