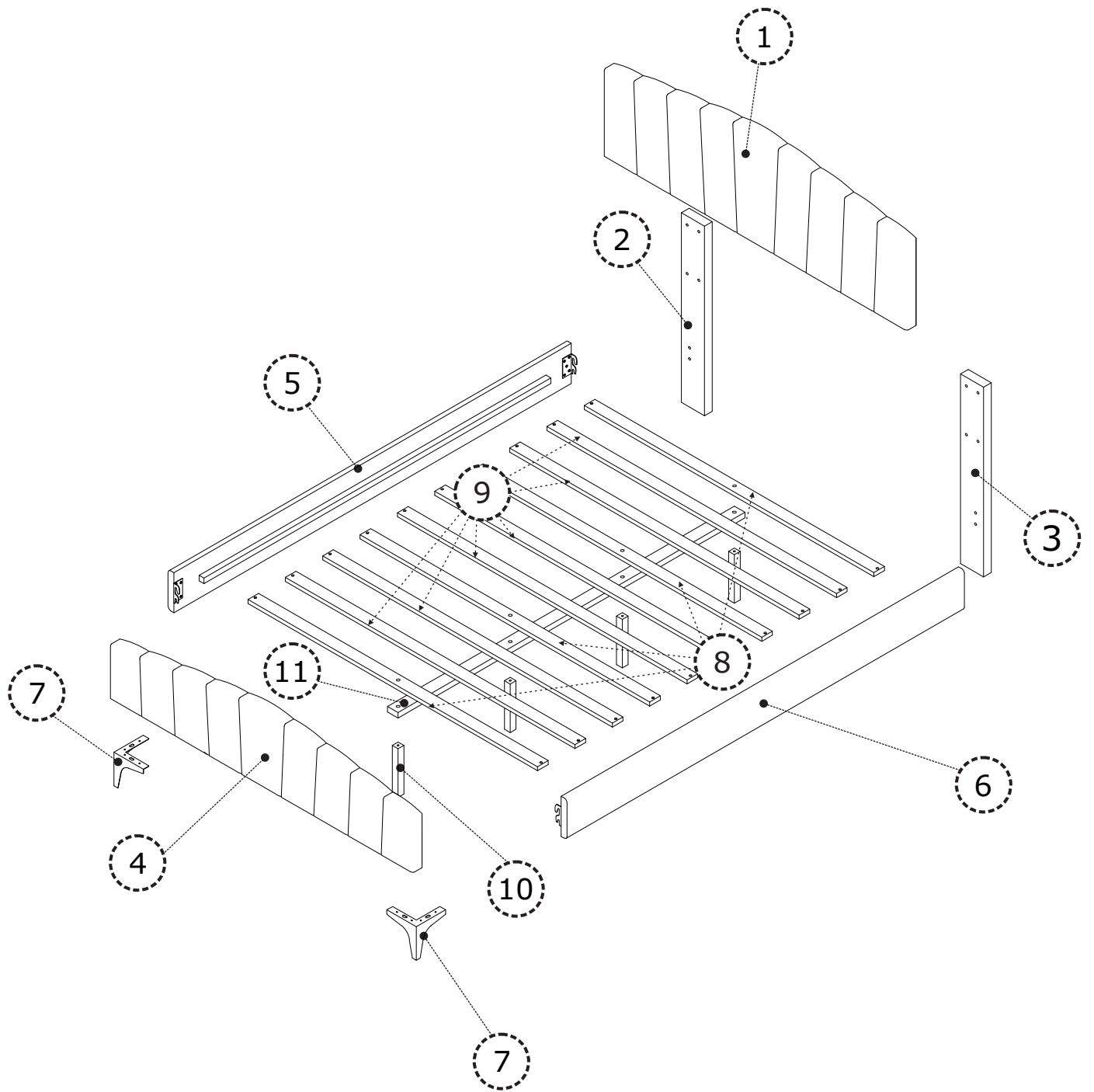


# ASSEMBLY INSTRUCTIONS

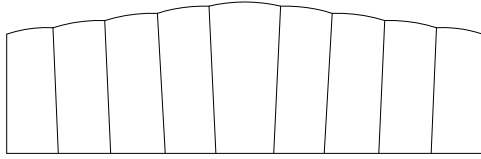


# PARTS

Check that you've received  
all parts listed below.

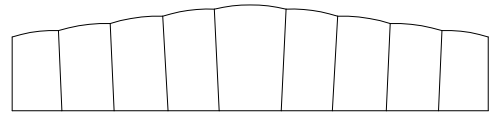
**BOX: 1/2**

1 x 1



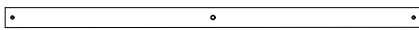
Head Board

4 x 1



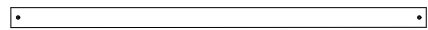
Foot Board

8 x 4



Slats

9 x 6



Slats

10 x 4



Support Legs

# PARTS

Check that you've received  
all parts listed below.

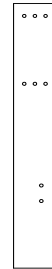
**BOX: 2/2**

2 x 1



Head Leg left

3 x 1



Head Leg Right

5 x 1



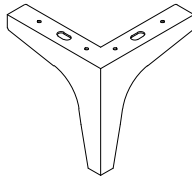
Side Board Left

6 x 1



Side Board Right

7 x 2



Legs

11 x 1



Support Slat








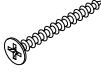
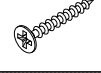

Hardware



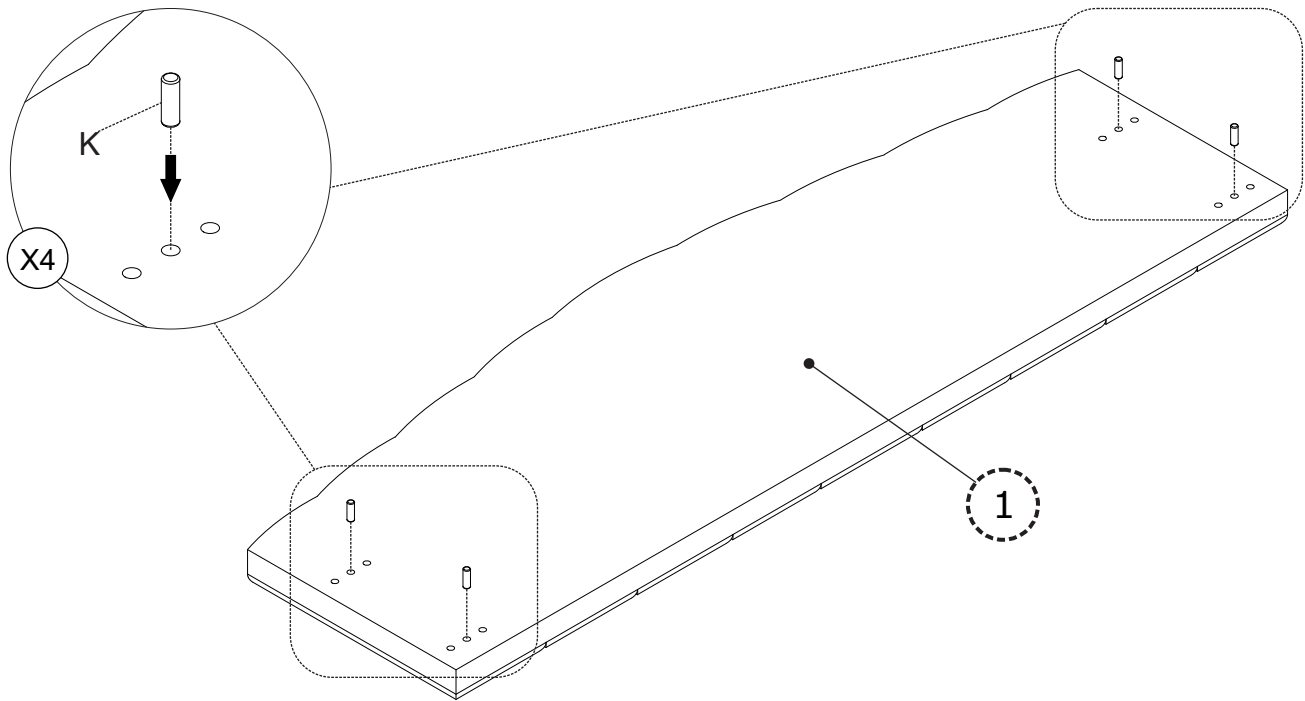
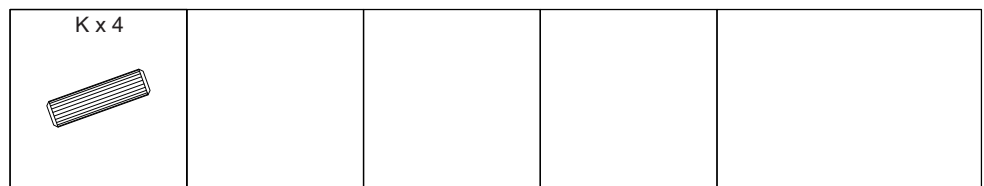
# HARDWARE

Check that you've received all hardware listed below.

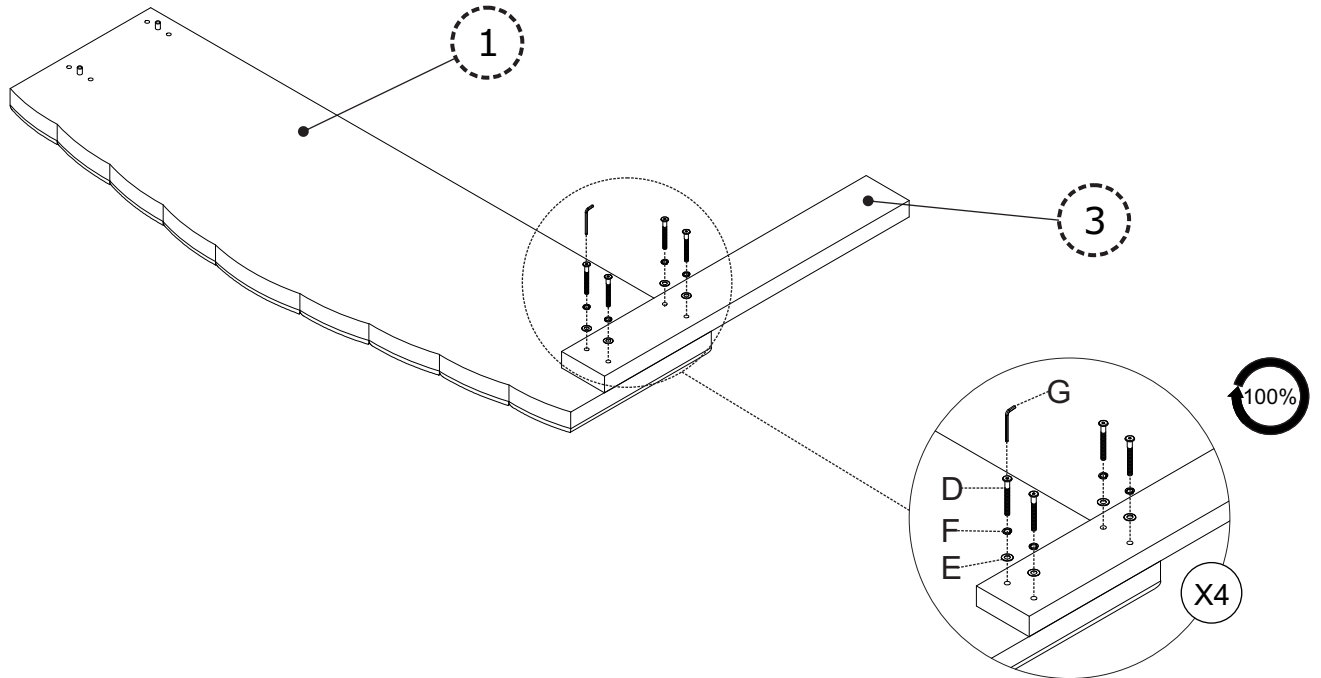
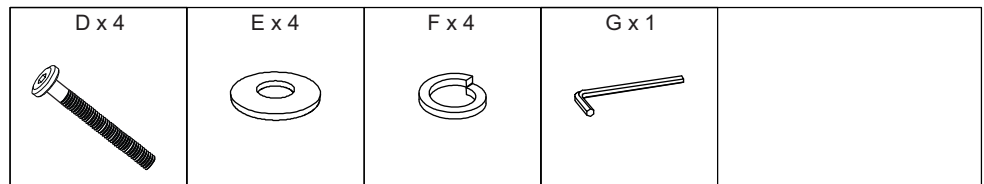
## Hardware List

No.	OUTLOOK	DESC	QTY
(A)		<b>Bolts</b> 5/16"x20 mm	2
(B)		<b>Bolts</b> 5/16"x30 mm	8
(C)		<b>Bolts</b> 5/16"x60 mm	4
(D)		<b>Bolts</b> 5/16"x70 mm	8
(E)		<b>Plain washer</b> Ø19x1.5 mm	22
(F)		<b>Spring washer</b> Ø13x1 mm	22
(G)		<b>Allen key</b> 80x30x4 mm	1
(H)		<b>Screws</b> Ø4x30 mm	20
(I)		<b>Screws</b> Ø4x15 mm	8
(K)		<b>Dowel</b> Ø10 x 30 mm	4

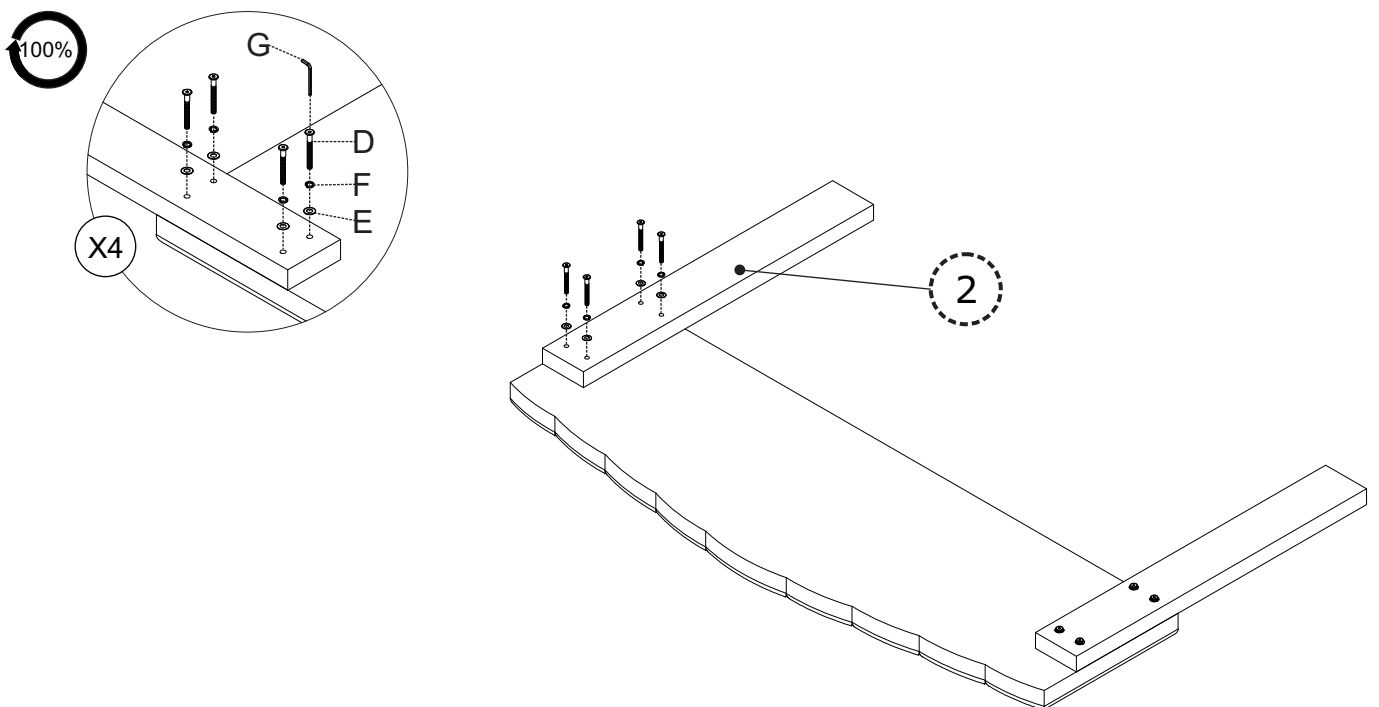
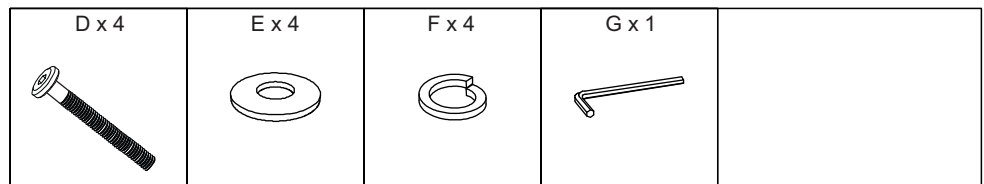
# STEP 1



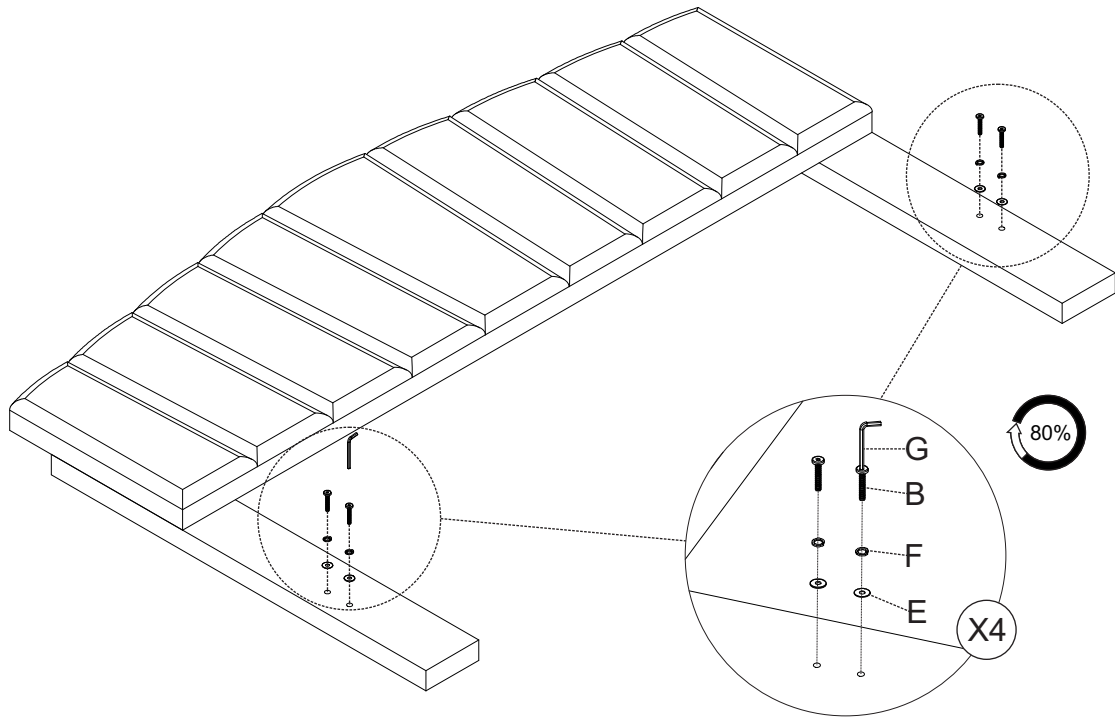
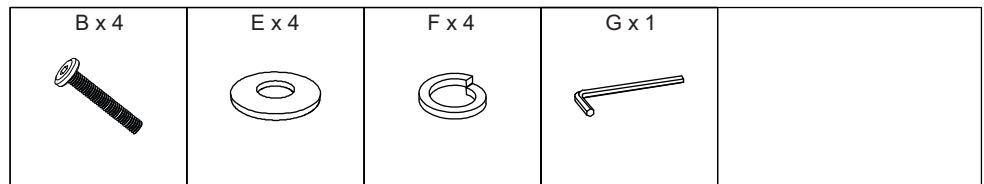
# STEP 2



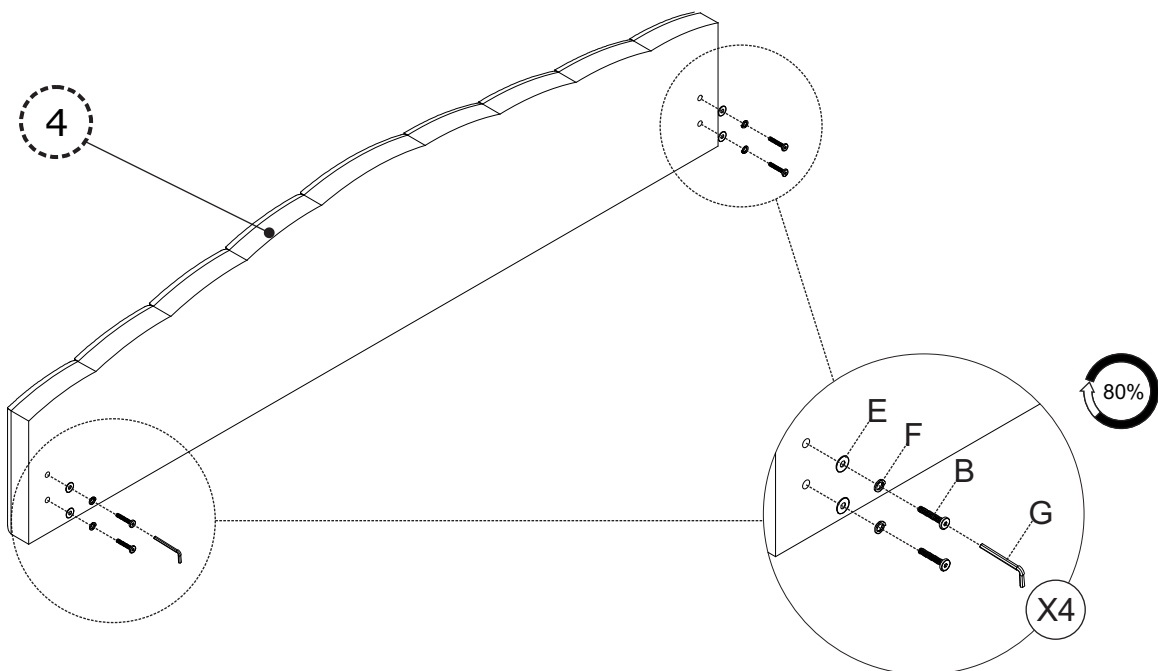
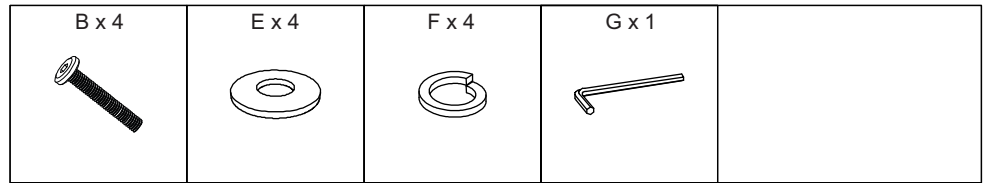
# STEP 3



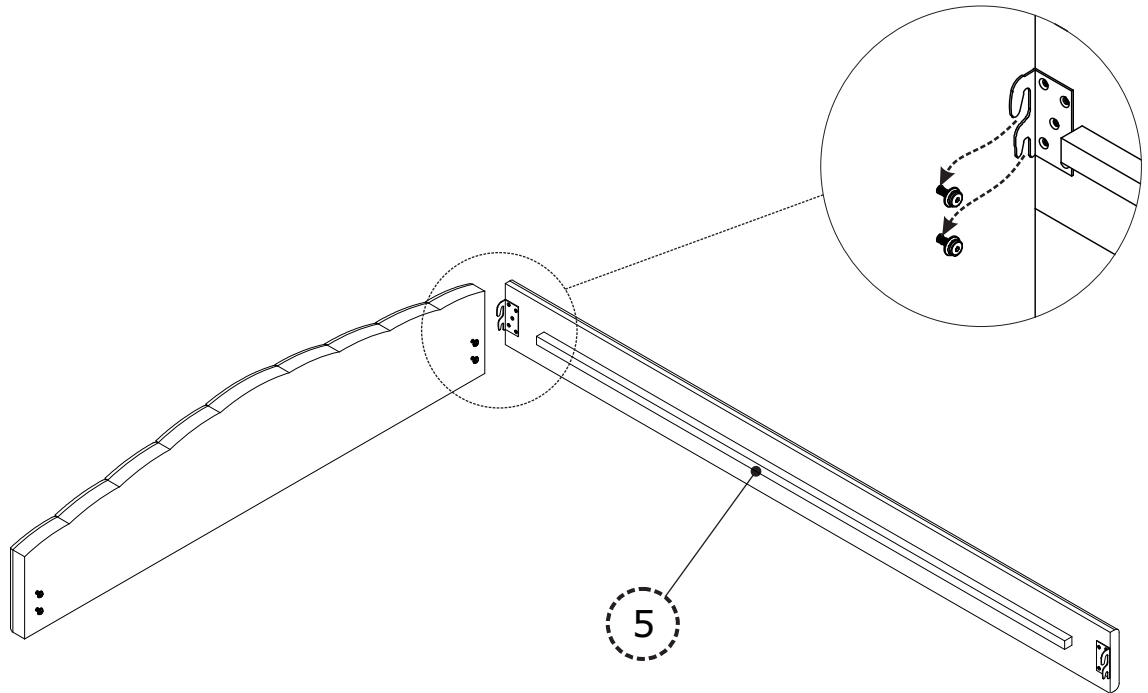
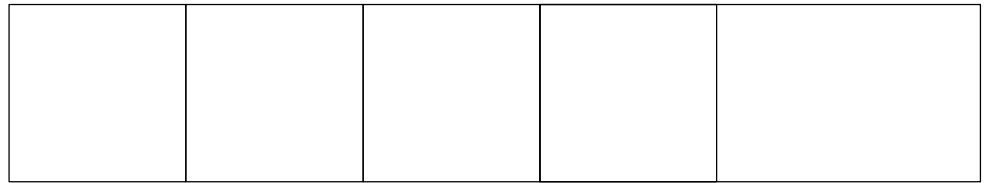
# STEP 4



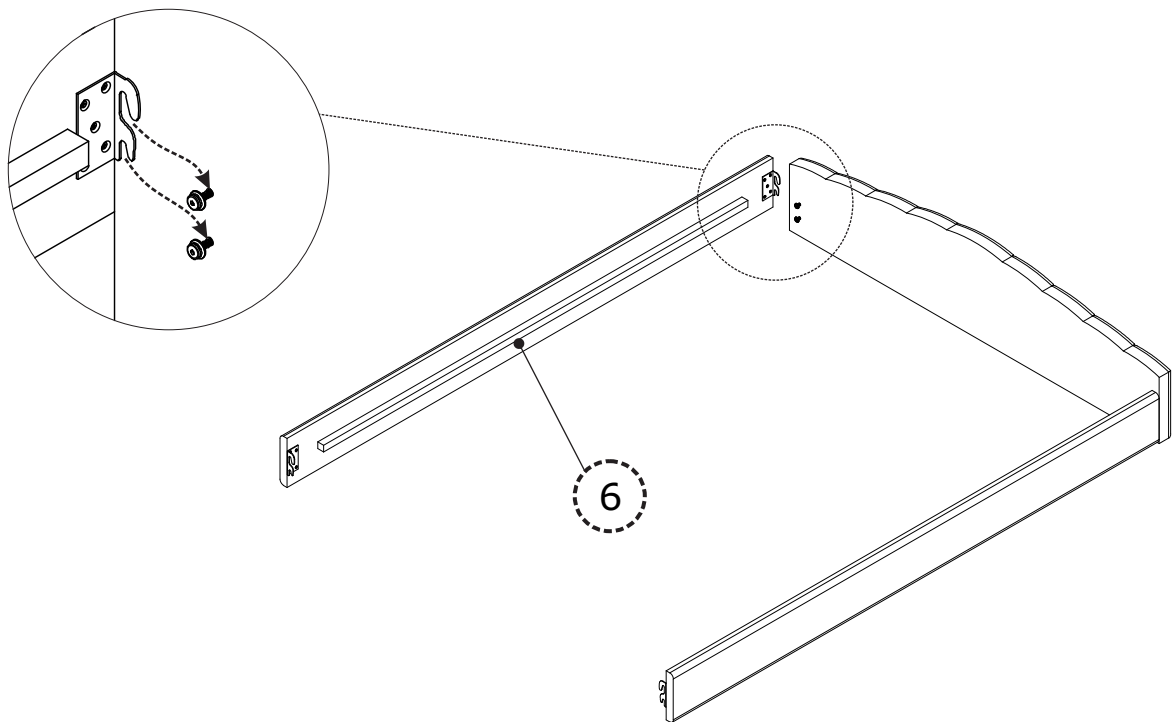
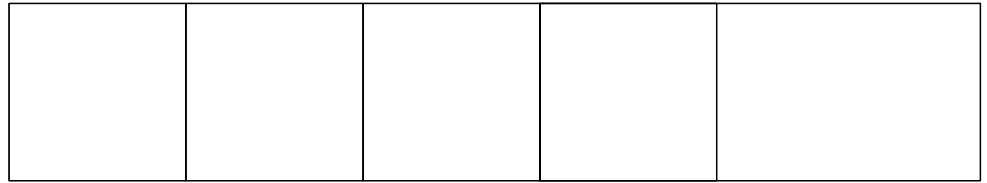
# STEP 5



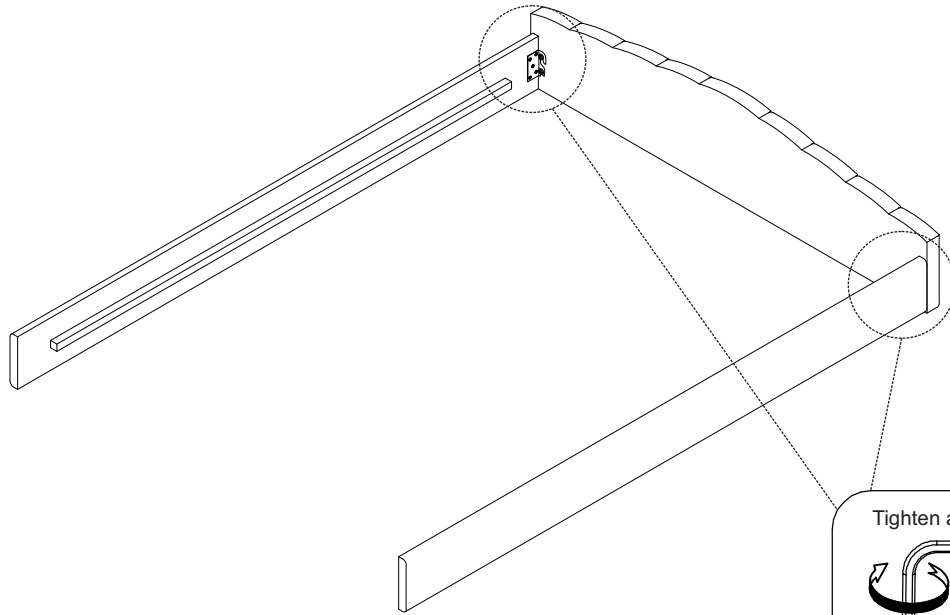
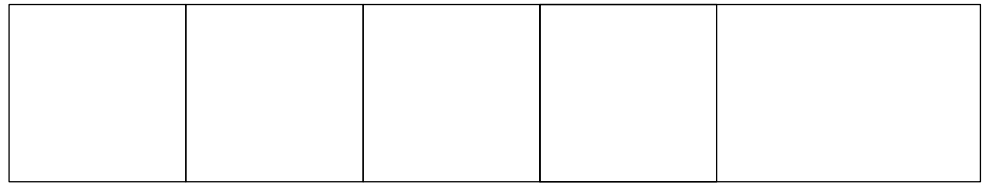
# STEP 6



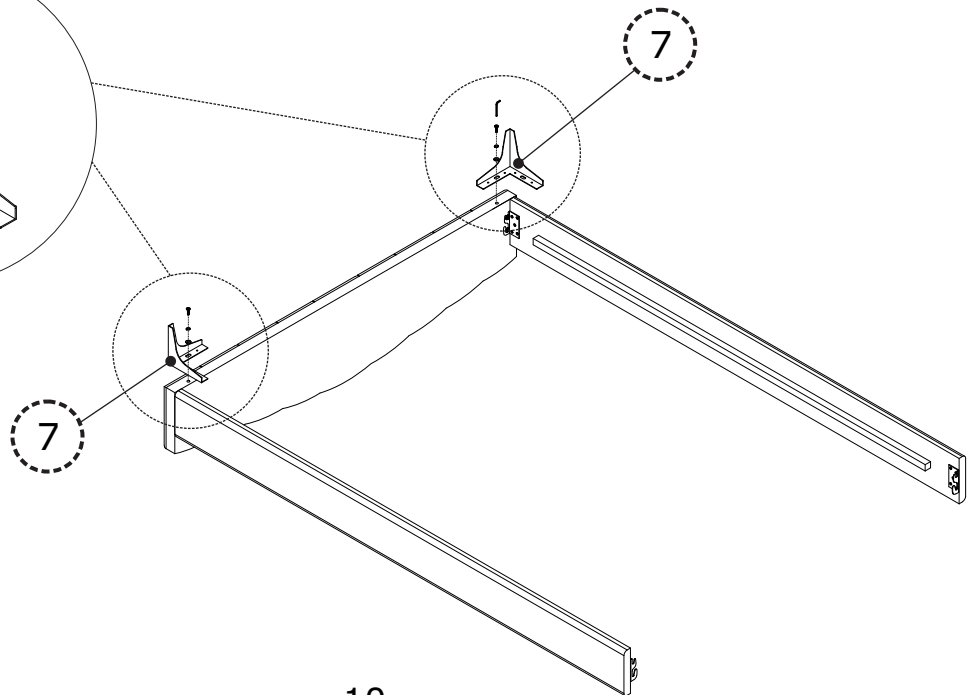
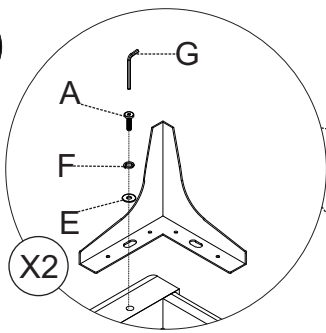
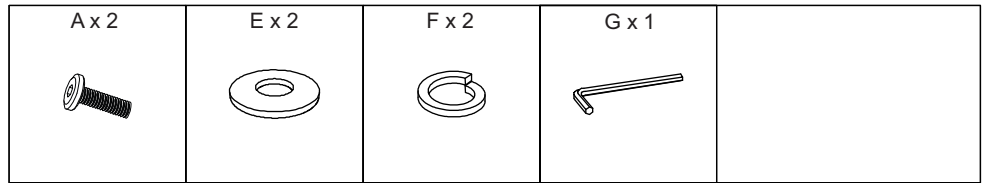
# STEP 7



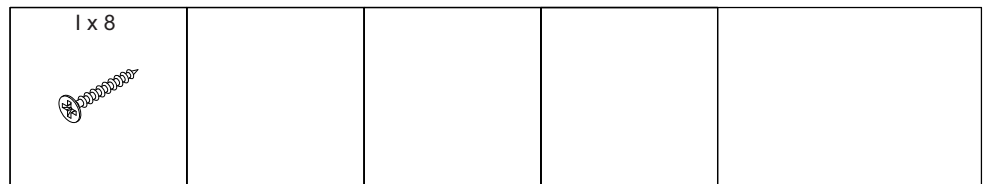
# STEP 8



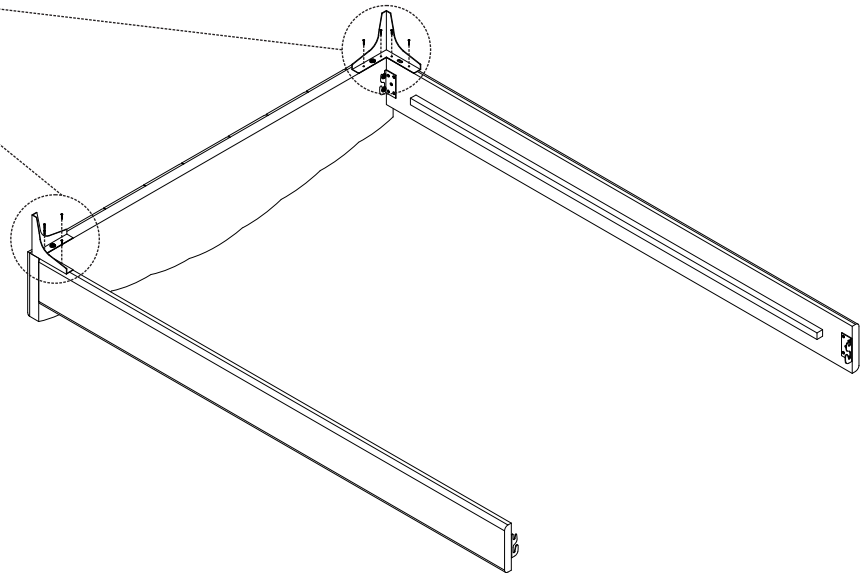
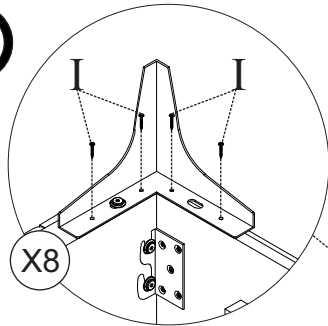
# STEP 9



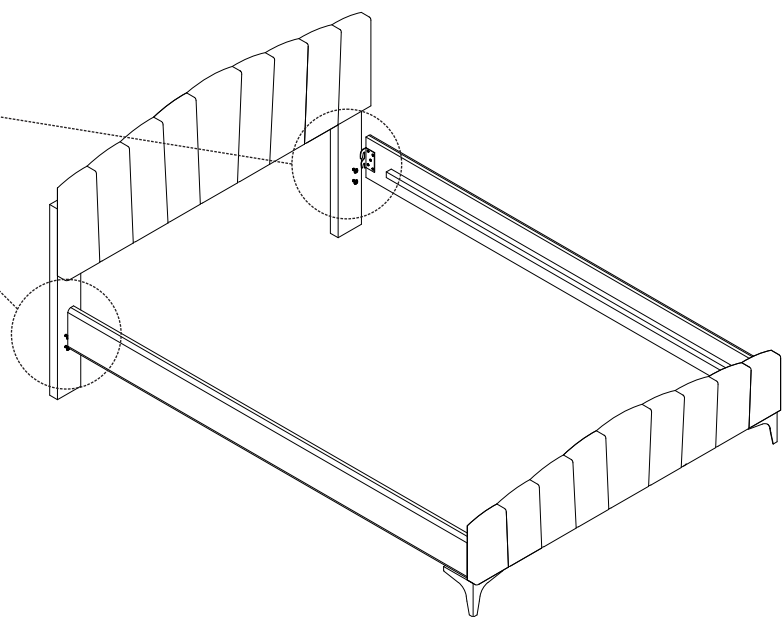
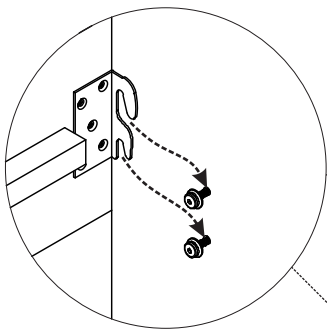
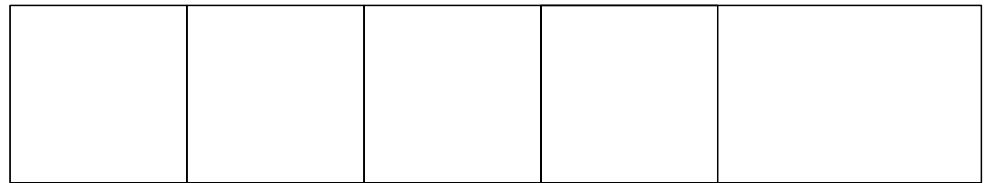
# STEP 10



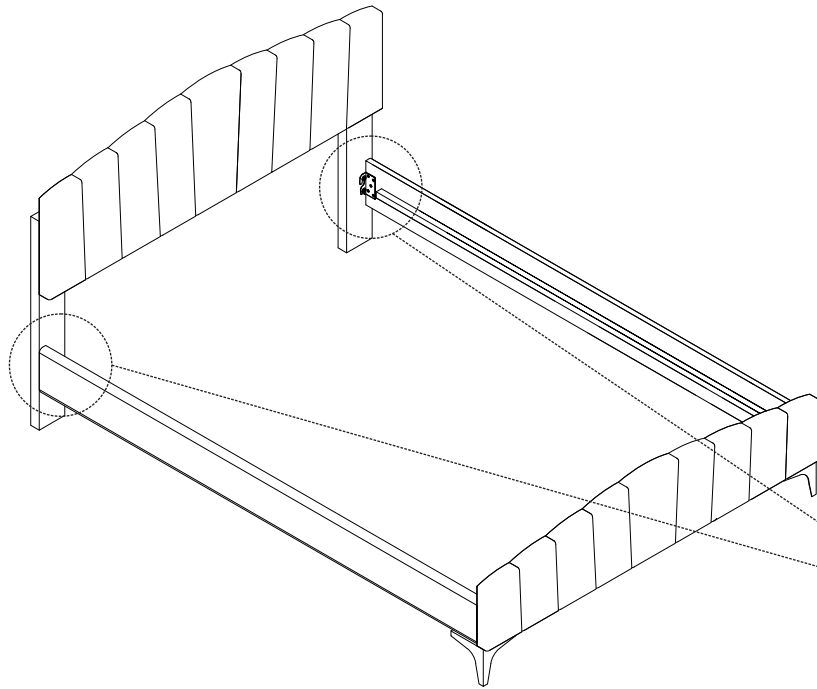
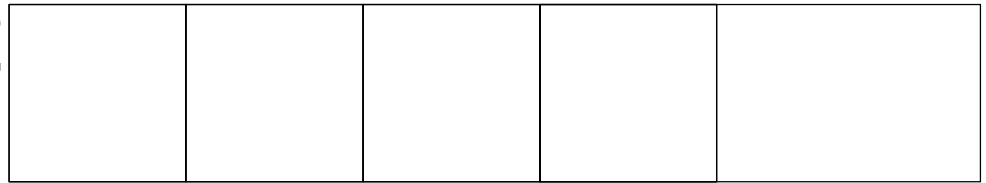
100%



# STEP 11



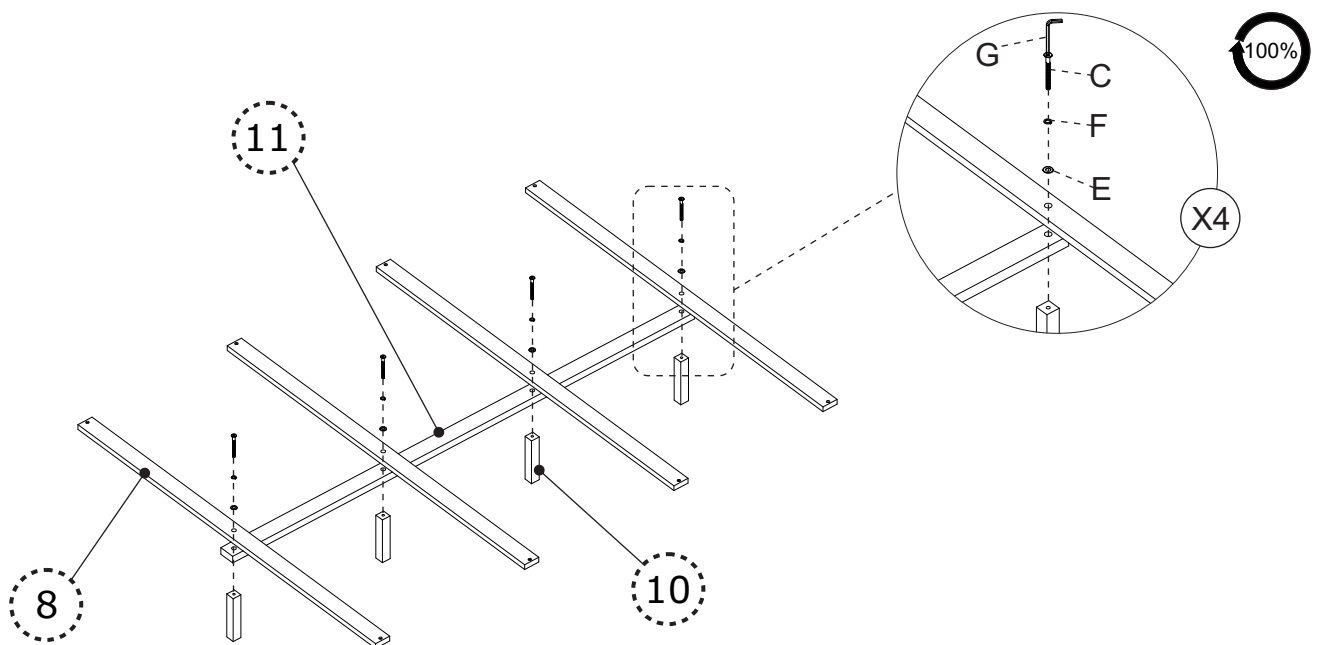
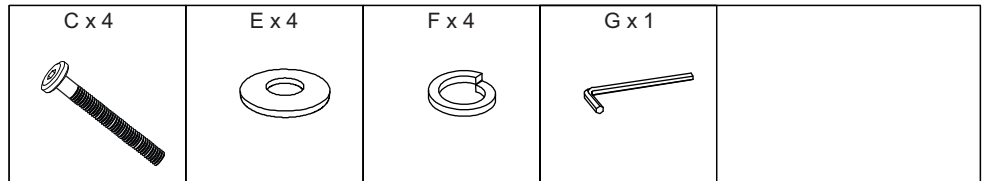
# STEP 12



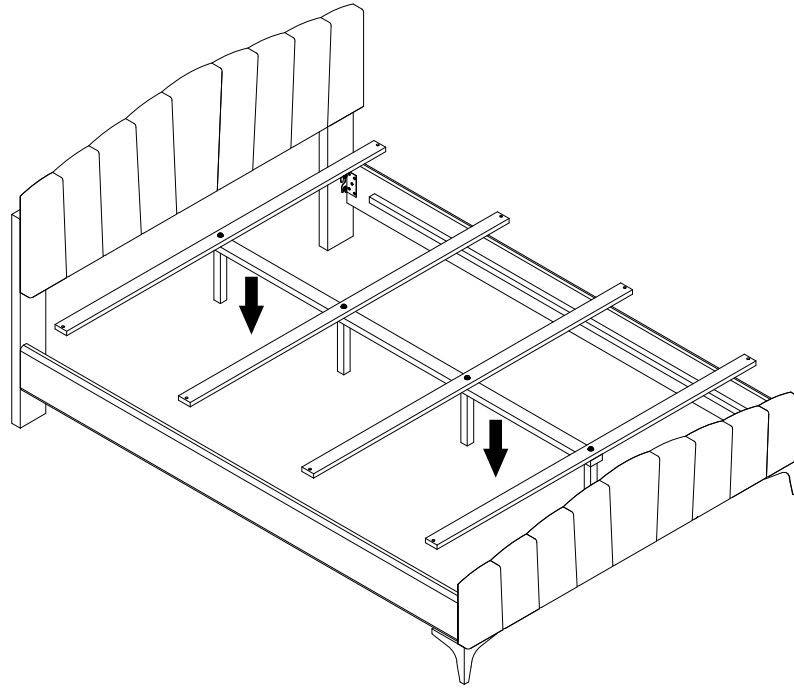
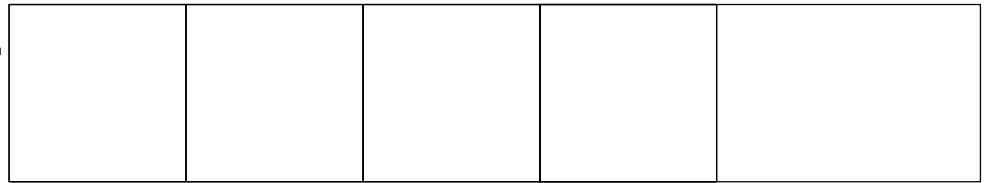
Tighten all screw bolts 100%

100%

# STEP 13



# STEP 14



# STEP 15

