

Knob & Pull Installation

Recommended Tools (Not Included)

Included Items

- Pencil
- Masking Tape
- Measuring Tape or Ruler
- Safety Glasses
- Drill with 3/16" Bit
- Pliers or Cutters
- Screwdriver (Slotted or Phillips)

- Knob or Pull
- Screw(s)
- Breakaway Screw(s)
- Screw Template (Cut out from bottom of this sheet)

HARDWARE PLACEMENT: Position the hardware in a comfortable and aesthetically pleasing manner. We recommend placing your hardware where it looks and functions best for you. For consistent spacing across multiple doors or drawers, measure and note the distance of the screw holes from the vertical and horizontal edges of the door or drawer.

DRILLING: For optimal results, use a sharp drill bit. Drill slowly through the front surface, periodically withdrawing the bit to clear away wood shavings. If feasible, place a block of wood behind the screw mark on the back of the door or drawer to prevent splintering. Remember to wear safety glasses and keep hands clear of the drill bit's path.

BREAKAWAY SCREWS: These are for doors or drawers thicker than 3/4". Insert the screw through the back of the door or drawer. Mark the first non-threaded area of the screw that extends at least 1/4" past the face. Then, remove the screw from the hole.

While wearing safety glasses, firmly hold the screw with pliers. With a second pair of pliers, grip the breakaway screw at the non-threaded area you identified. Gently wiggle the pliers back and forth until the screw breaks.

**Take your time.
Measure twice and drill once.**

HARDWARE INSTALLATION INSTRUCTIONS

Undrilled Cabinet Door Hardware Installation: 1. Determine Where to Place Your Hardware

The placement of your hardware depends on the type of cabinet you're working with - whether upper cabinets, lower cabinets, pantry doors, etc. There are no strict rules, so choose what suits you best.

Generally, for cabinet door hardware, a common placement is 2-1/2" to 3" from the bottom corner for upper (wall) cabinets and at the upper corner for lower (base) cabinets.

For knobs, find your preferred placement and then measure and note the distance of the screw holes from both the vertical and horizontal edges of the door. This ensures consistent spacing across multiple doors.

Tip: To make marking easier, place a strip of masking tape under the template or tape measure for better visibility and easy removal of markings.

For pulls, start by determining the placement for the hole closest to the door's corner. Align that mark with one hole on the included template. Ensure the template is square to the door's edge, then use it to mark the other hole at the appropriate distance. If your pull has holes wider than the template, measure the distance between the centers of the two holes with a tape measure or ruler. Use this measurement as a guide for placing the second hole. Mark the second hole at the same distance from the door's edge as the first hole.

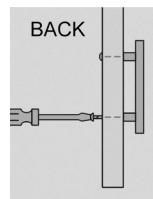
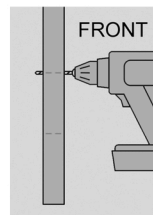
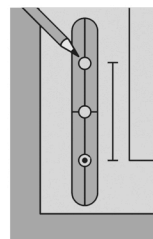
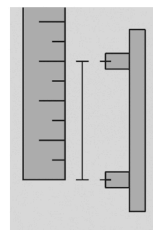
2. Drill the Holes

Hold your hardware up to the marked hole placements to check if any adjustments are needed. Ensure the hardware is on the opposite edge of the door from where the hinges are located. Wear safety glasses. Use a drill with a sharp 3/16" bit to drill through the outside of the door at the screw marks you made. Remove any tape. Insert screws into holes. Screws should extend at least 1/4" past the door face to secure the hardware. Most doors are 3/4" thick or less and can use 1" screws. For doors thicker than 3/4", refer to the note about breakaway screws below the Recommended Tools list.

3. Attach Your Beautiful New Hardware

Align the knob or pull with the drilled holes. Insert the screws through the back of the door into the holes of the hardware to catch onto the threads of the hardware. Tighten the screws using a screwdriver.

Tip: Avoid using a power drill as it can tighten the hardware too forcefully, potentially damaging the door or screws.



Undrilled Drawer Hardware Installation: 1. Determine Where to Place Your Hardware

Hardware is typically centered both vertically and horizontally on the drawer front. However, for fronts taller than 12", hardware can be positioned higher, closer to the top edge. If you've chosen a cup pull, keep in mind that the holes may need to be drilled higher or lower to achieve a vertically centered appearance.

Tip: Place a strip of masking tape under the template or tape measure to mark screw holes for better visibility of placement markings and clean removal.

Measure and mark the vertical and horizontal center of the drawer front in two places. Align the ruler or measuring tape to these marks, then draw a line connecting the vertical center of the drawer front. If you're installing knobs, proceed to Step 2.

For pulls, align the center hole of the provided template with the midpoint mark you made. Then, measure to ensure the template is level with the top edge.

If the pull you've selected has holes wider than the template, measure the distance between the centers of the two holes using a tape measure or ruler. Find the midpoint of this distance and align it with the midpoint mark you made. Mark both holes at the same distance from the top edge. You can then erase the midpoint mark for the pull if it's drawn on the drawer face.

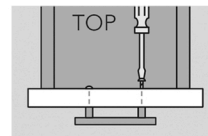
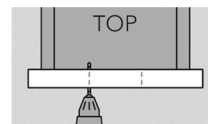
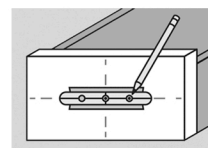
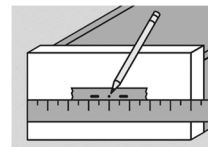
2. Drill the Holes

Hold your hardware up to the marked hole placements to check if any adjustments are needed. Wear safety glasses. Use a drill with a sharp 3/16" bit to drill through the outside of the drawer at the screw marks you made. Remove any tape. Insert screws into holes. Screws should extend at least 1/4" past the drawer face to secure the hardware. Most drawers are 3/4" thick or less and can use 1" screws. For drawers thicker than 3/4", refer to the note about breakaway screws below the Recommended Tools list.

3. Attach Your Beautiful New Hardware

Align the knob or pull with the drilled holes. Insert the screws through the back of the drawer face into the holes of the hardware to catch onto the threads of the hardware. Tighten the screws using a screwdriver.

Tip: Avoid using a power drill as it can tighten the hardware too forcefully, potentially damaging the door or screws.



Common Pull Screw Spacing Template: Punch holes in template to align with the pull's screw holes and center hole. **Make sure printer settings are "Actual Size"*

