

4

3

2

1

NOTES:

1. TO INSPECT ASSEMBLY, FOLLOW FIRST ARTICLE AND IN PROCESS INSPECTION SHEET.

2. PUT THESE ITEMS IN SEPARATE PLASTIC BAGS.

3. TORQUE TO 8 +/-0.5 LB-FT.

4. APPLY THIN COAT OF SILICON GREASE FOR ALL O-RINGS BEFORE INSTALLATION.

5. APPLY LOCTITE 242, IF SCREW DOES NOT HAVE NYLON PATCH.

6. APPLY LOCTITE 680.

7. PULL OUT HOSE AND APPLY SILICON GREASE, BETWEEN HOUSE AND SPOUT, 10" FROM OUTLET TO HOSE.

8. TORQUE SWIVEL NUT TO 19 +/-2 LB-IN.

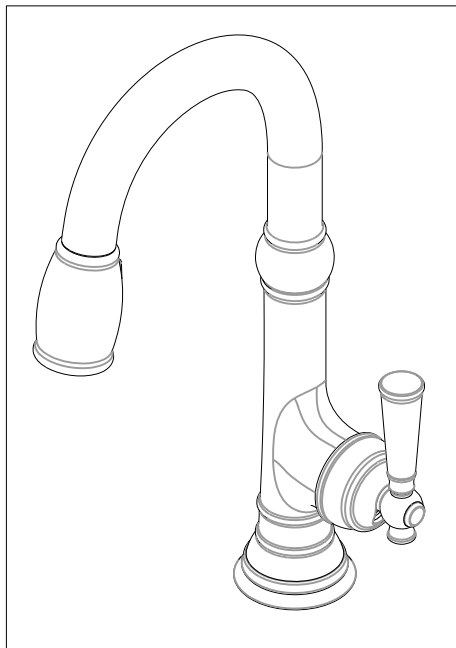
9. TORQUE TO 10 +/-2 LB-FT.

10. TORQUE TO 7 +/-2 LB-IN.

11. PARTIALLY THREAD MOUNTING KIT ONTO SHANK.

12. DO NOT DOCK SPRAY HEAD TO SPOUT WHEN PACKAGING.

13. PLACE ZIP TIE 2" FROM BOTTOM OF SHANK.



BILL OF MATERIAL (CURRENT LEVEL)

| ITEM | PT/ASSY | DESCRIPTION | TYPE | QTY. |
|------|---------|---|----------|------|
| 1 | 2-783 | BASE RING ASM | ASSEMBLY | 1 |
| 2 | 2-785 | MAIN BODY ASM, JACOBEAN | ASSEMBLY | 1 |
| 3 | 13475 | BALL CONNECTOR | PART | 1 |
| 4 | 12751 | SPOUT ADAPTER | PART | 1 |
| 5 | 91712 | SLEEVE | PART | 1 |
| 6 | 91030 | O-RING, #2- 115, EPDM, 65-75 DURO, NSF 61 | PART | 4 |
| 7 | 12494 | SPOUT | PART | 1 |
| 8 | 91544 | MAGNET DOCKING | ASSEMBLY | 1 |
| 9 | 3-417 | SPRAY HEAD, JACOBEAN | ASSEMBLY | 1 |
| 10 | 11877 | HOSE, PULLDOWN SWIVEL | ASSEMBLY | 1 |
| 11 | 1-064 | SINGLE LEVER CARTRIDGE | PART | 1 |
| 12 | 2-781 | CART. RETAINER ASM | ASSEMBLY | 1 |
| 13 | 91568 | RETAINER CLIP | PART | 1 |
| 14 | 1-256 | MOUNTING KIT | ASSEMBLY | 1 |
| 15 | 1-286 | WEIGHT ASM | ASSEMBLY | 1 |
| 16 | 91534 | CARTRIDGE STEM INSERT | PART | 1 |
| 17 | 20-314 | HANDLE LEVER ASM | ASSEMBLY | 1 |
| 18 | 92035 | SCRW, M4 X .7 X 10 PHL FLT HD SS | PART | 1 |
| 19 | 2-778 | CAP ASM | ASSEMBLY | 1 |
| 20 | 12835 | HANDLE HUB | PART | 1 |

| | | | | |
|------|-----|-------------|----------|----------|
| - | T | EN-4185E | 02/16/22 | C.G. |
| - | R | EN-4200B-1 | 07/06/21 | C.G. |
| - | P | EN-4300s | 03/29/21 | R.S. |
| - | N | EN-4167 | 06/08/20 | JMR |
| - | M | EN-3931B | 09/09/19 | V.V. |
| - | L | EN-3413f | 02/26/18 | JM |
| - | K | EN-3413d | 01/10/18 | JM |
| - | J | EN-3034L | 09/11/17 | J.A |
| - | H | EN-3034F | 04/20/17 | J.A |
| - | G | EN-3034 | 04/13/17 | J.A |
| - | F | EN-2500 | 04/22/13 | - |
| - | E | EN-2443o | 04/18/13 | - |
| - | D | EN-2293 | 10/02/12 | - |
| - | C | EN-2211 | 07/06/12 | - |
| - | B | EN-2181 | 06/11/12 | - |
| ZONE | REV | DESCRIPTION | DATE | APPROVED |

COPYRIGHT 2005 BRASSTECH, INC. THESE DRAWINGS AND THE DESIGNS DEPICTED HEREIN ARE THE PROPRIETARY PROPERTY OF BRASSTECH. ANY USE OR REPRODUCTION IS SUBJECT TO THE EXPRESS APPROVAL OF BRASSTECH. UNAUTHORIZED USE IS STRICTLY PROHIBITED. ALL RIGHTS RESERVED.

| | | | |
|-------------------|---|----------------------------------|---------|
| TESTING | - | - | - |
| ASSEMBLY | - | - | - |
| PLATING | - | - | - |
| POLISHING | - | NEXT ASSY | USED ON |
| MACHINING | - | APPLICATION | |
| TOOLING FIXTURE # | | REMOVE ALL BURRS AND SHARP EDGES | |

| | |
|---|-----------------|
| UNITS ARE: INCHES [MM] | |
| TOLERANCES ARE: | |
| FRACTIONS DECIMALS | ANGLES |
| ±1/16" | ±1° |
| .X ±.1 [2.5] | |
| .XX ±.06 [1.5] | |
| (X.XXX) DENOTES CRITICAL DIMS. ALL THREADS ARE CRITICAL | |
| DRAWN | JINSON 03/29/21 |
| CHECKED | R.S. 03/29/21 |
| APPROVED | R.S. 03/29/21 |

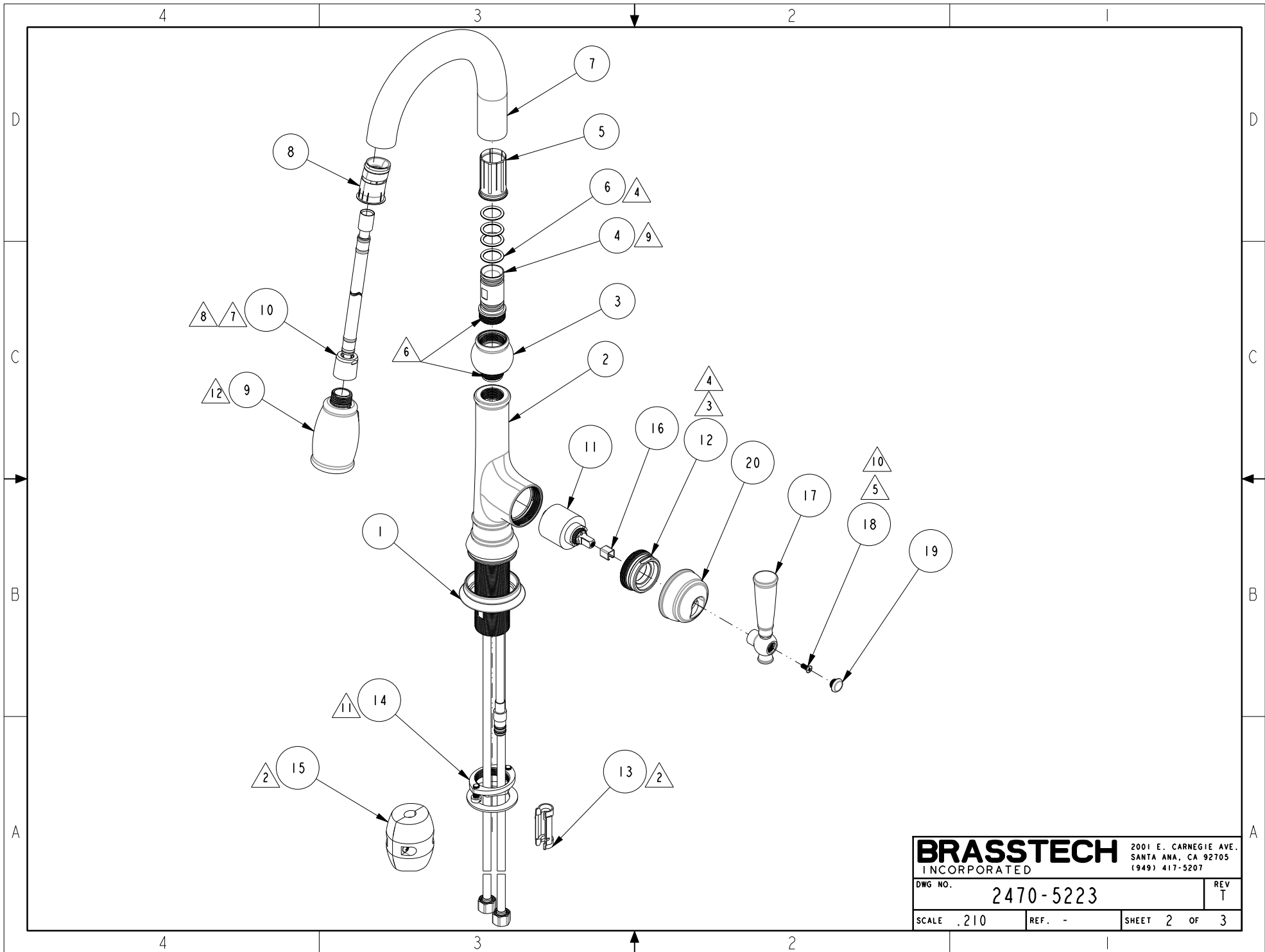
| | | | |
|--|------|---|----|
| BRASSTECH | | 2001 CARNEGIE AVE. SANTA ANA, CA 92705 (949) 417-5207 | |
| INCORPORATED | | | |
| JACOBEAN PULL DOWN - KITCHEN FAUCET | | | |
| DWG NO. | | REV | |
| 2470-5223 | | T | |
| SCALE | REF. | SHEET | OF |
| .250 | - | 1 | 3 |

4

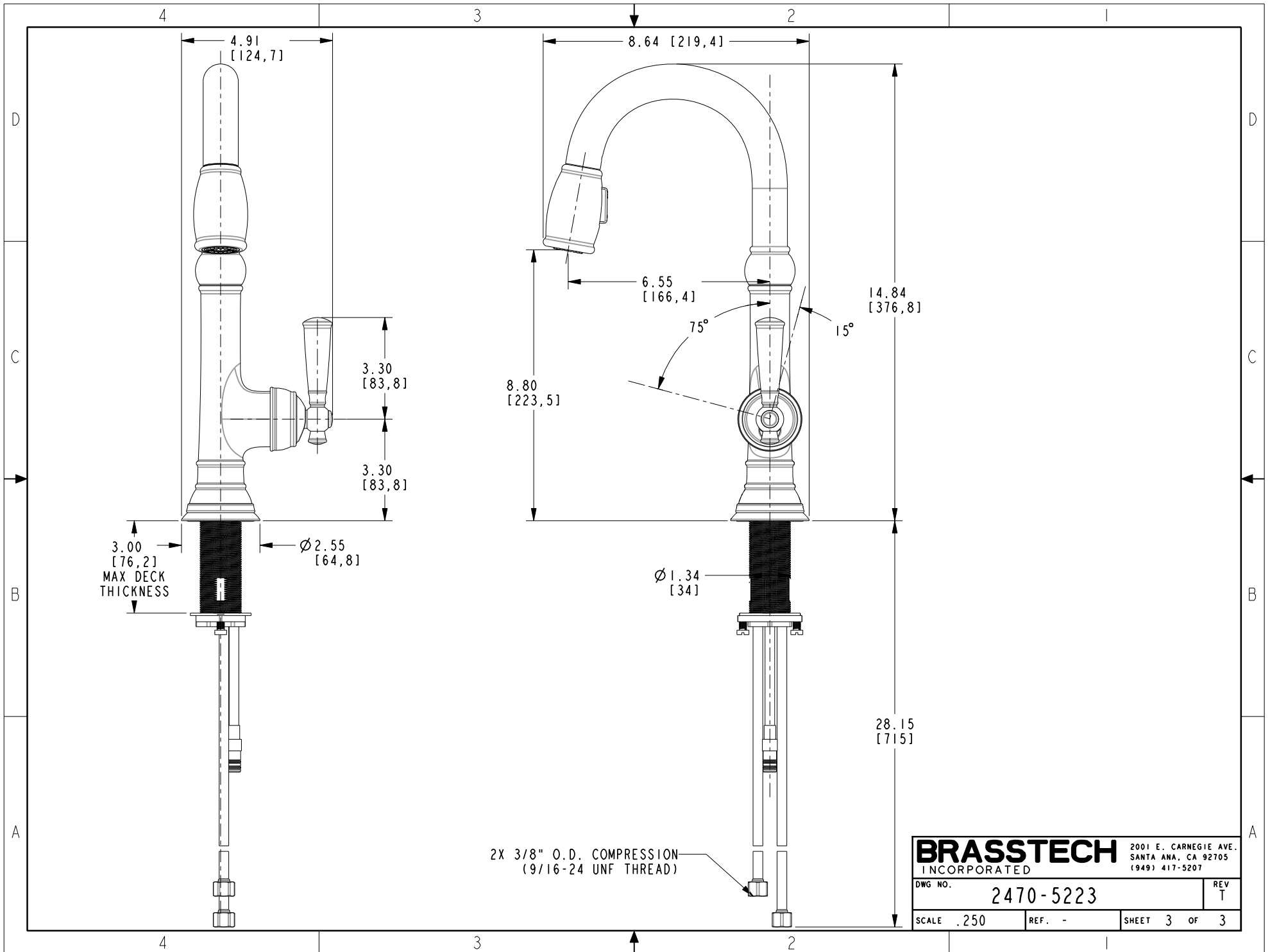
3

2

1



| | | |
|------------------|-----------|-----------------------|
| BRASSTECH | | 2001 E. CARNEGIE AVE. |
| INCORPORATED | | SANTA ANA, CA 92705 |
| | | (949) 417-5207 |
| DWG NO. | 2470-5223 | REV T |
| SCALE .210 | REF. - | SHEET 2 OF 3 |



| | | | |
|------------------|-----------|--|------|
| BRASSTECH | | 2001 E. CARNEGIE AVE. SANTA ANA, CA 92705 (949) 417-5207 | |
| DWG NO. | 2470-5223 | REV | T |
| SCALE .250 | REF. - | SHEET 3 | OF 3 |