

# caracole



## BALANCE DRESSER

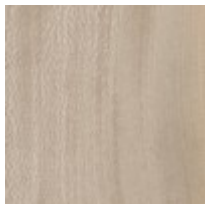
m143-022-031

**COLLECTION:** MODERN PRINCIPLES

**DIMENSIONS:** 69.25W x 20D x 32.25H

Light tones and organic textures in perfect balance exude a refined modern elegance. Soft-to-touch, vinyl wrapped drawers are complemented by Silver Platano wood veneers and a polished travertine stone top. Metal accents and a base in Lucent Bronze add warmth and subtle contrast to its calming, clean-lined form.

### FINISH:

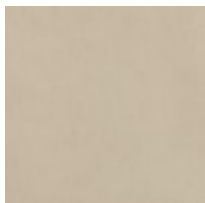


Cremini



Lucent Bronze  
Plated Metal

### FABRIC:



9176-35CC-P  
Performance

