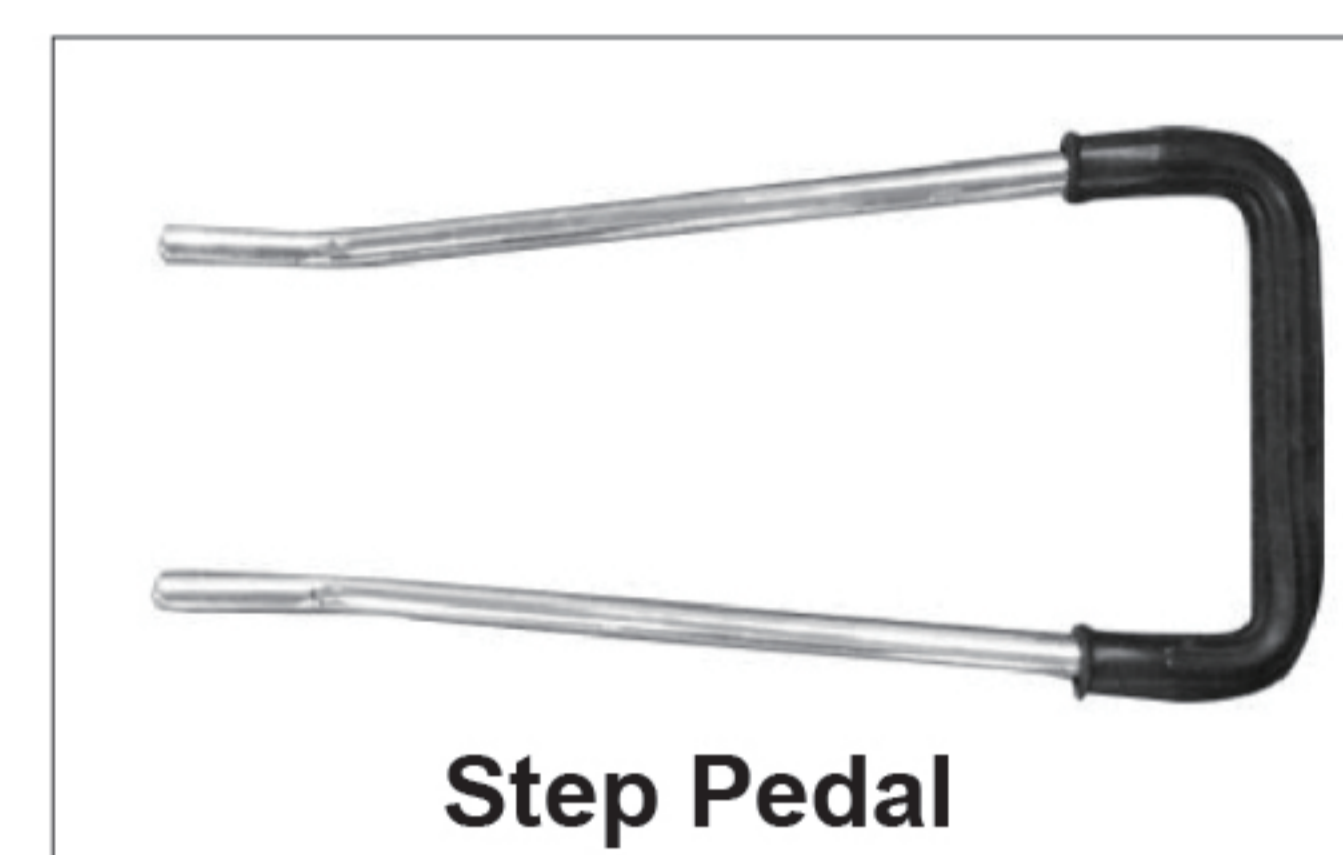
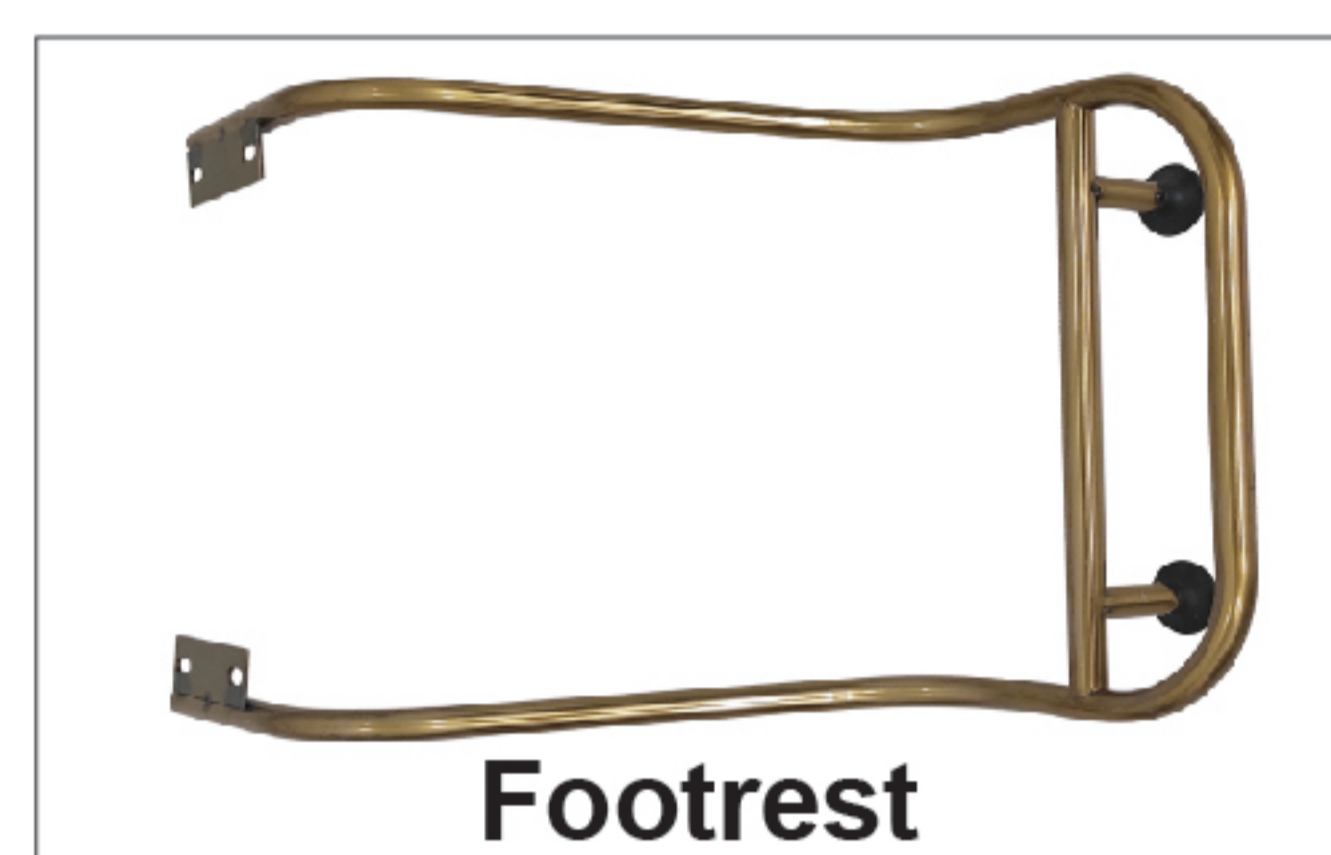
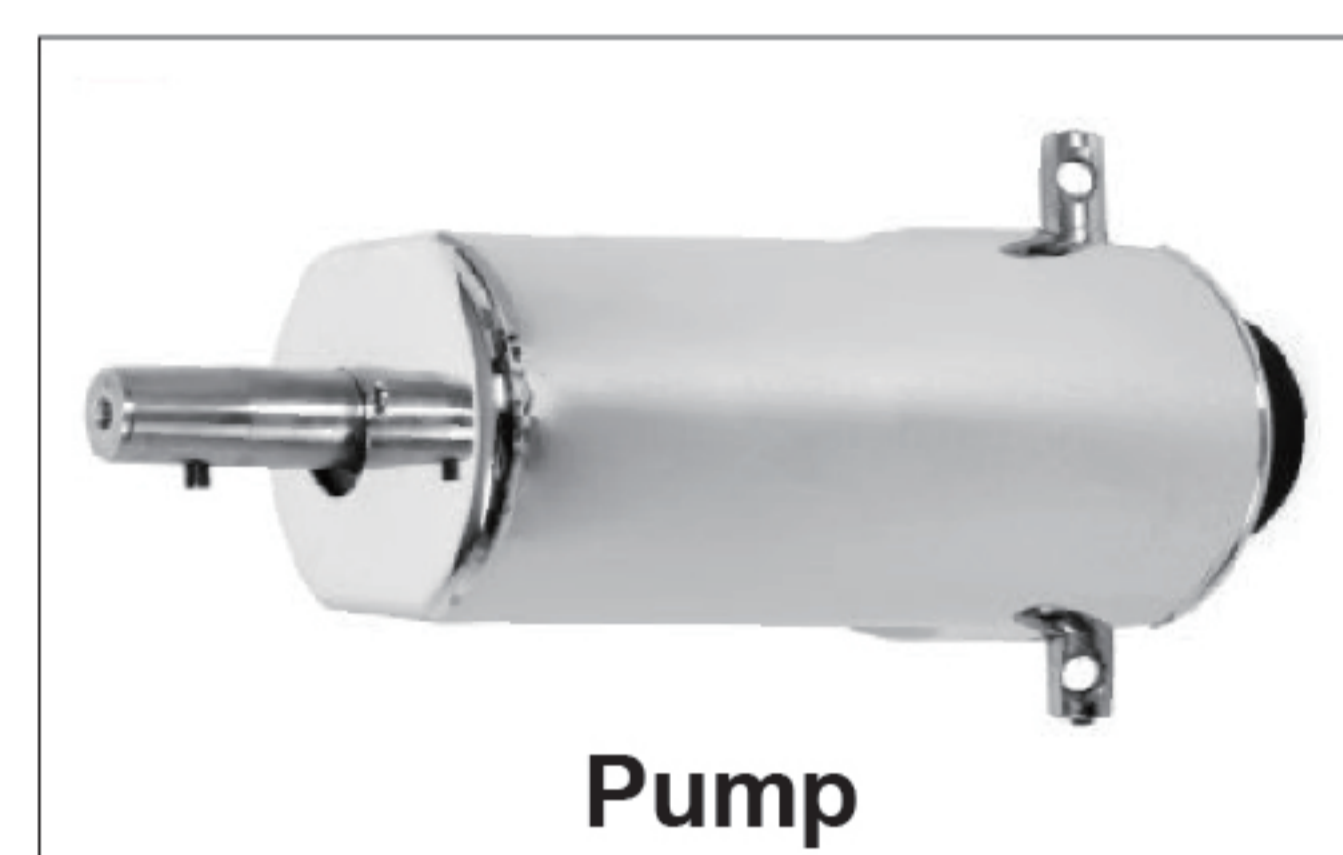
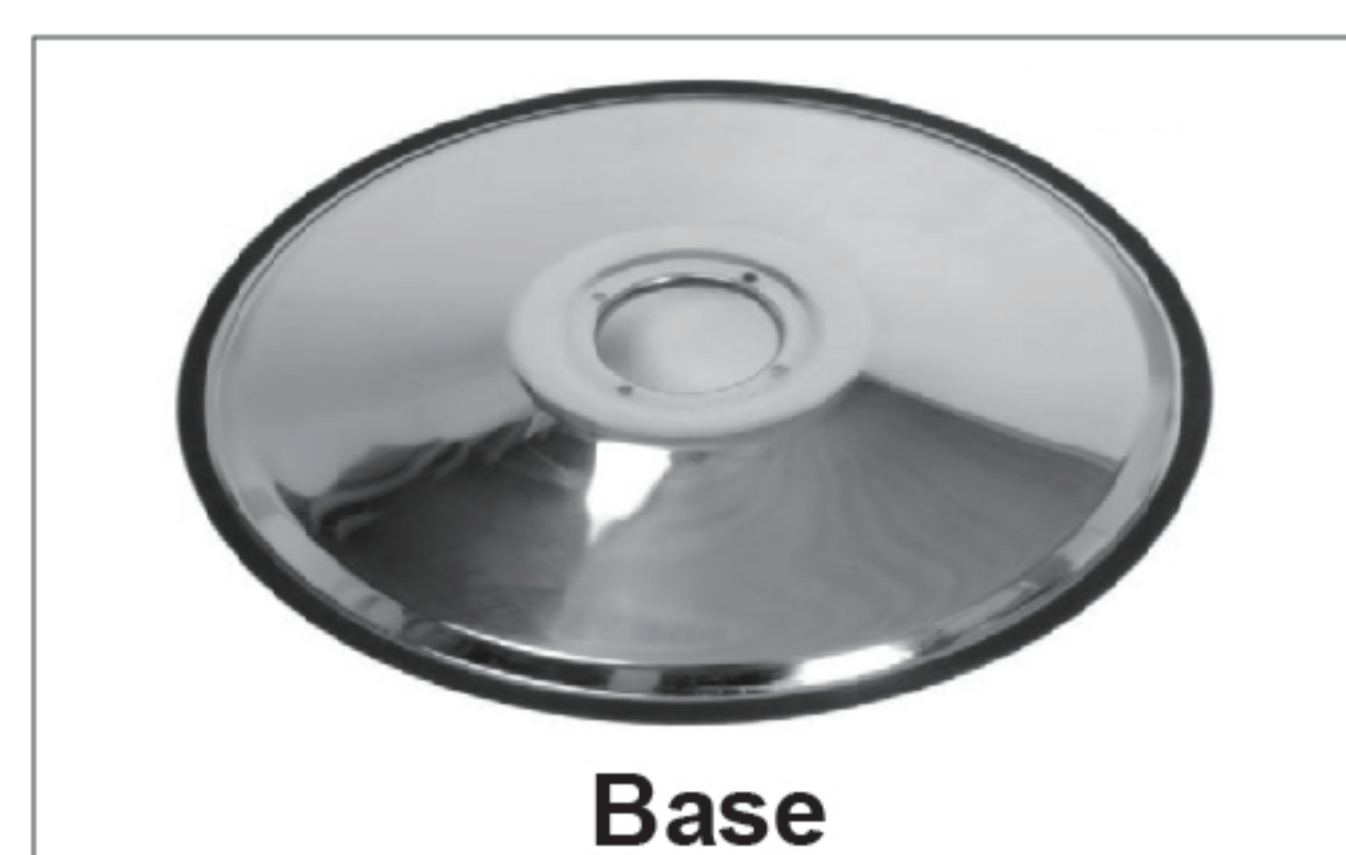
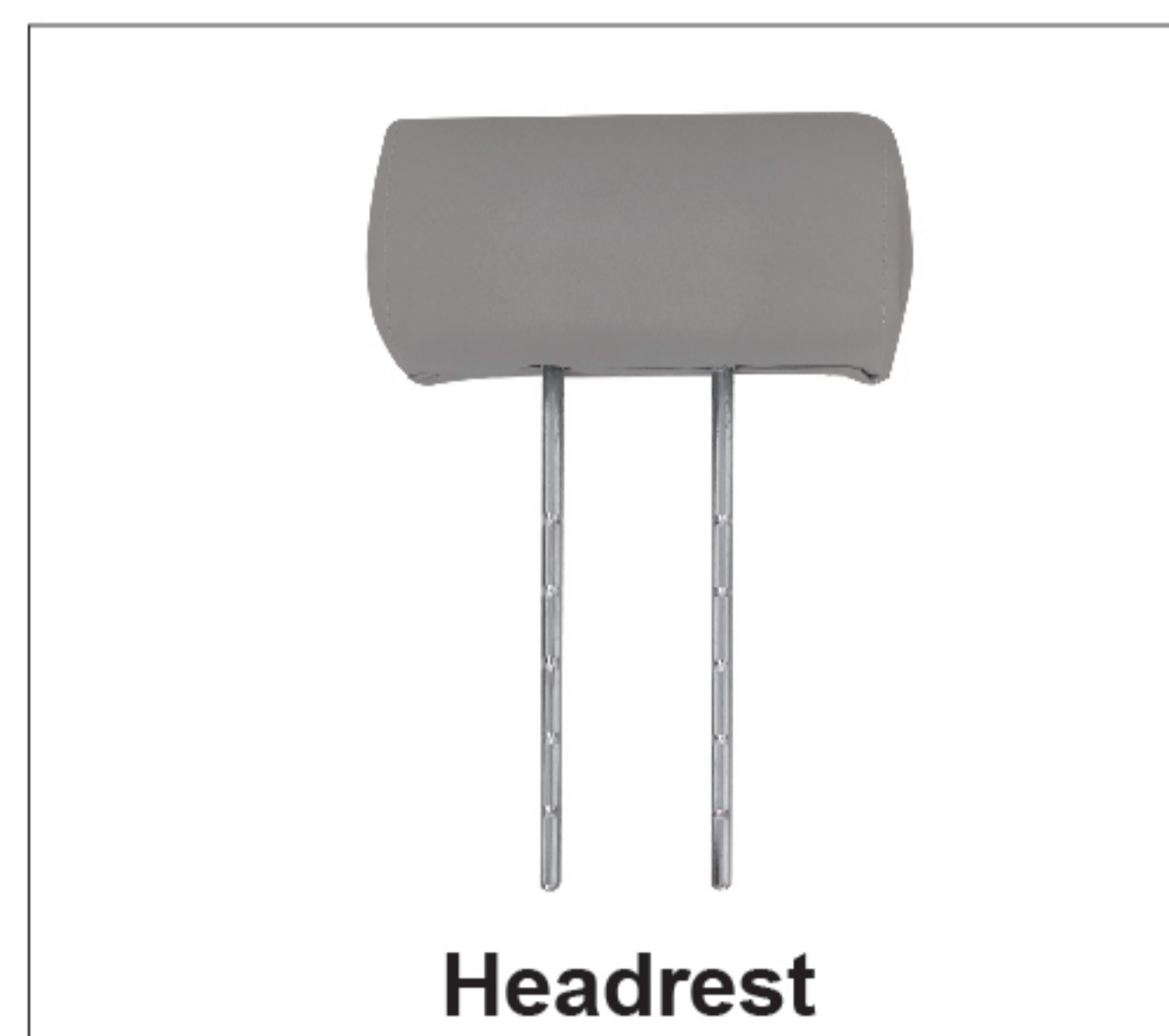


Installation Instructions

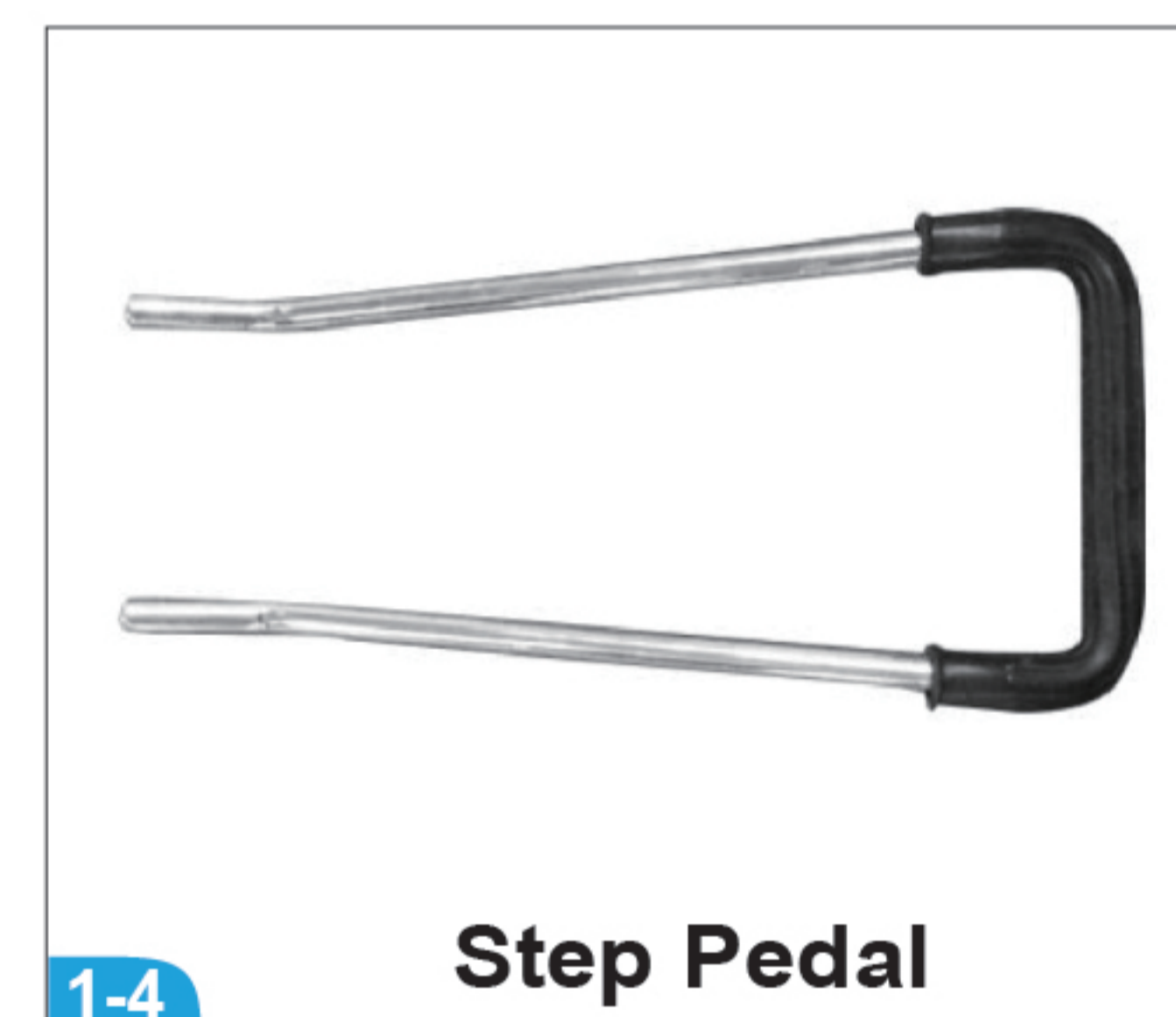
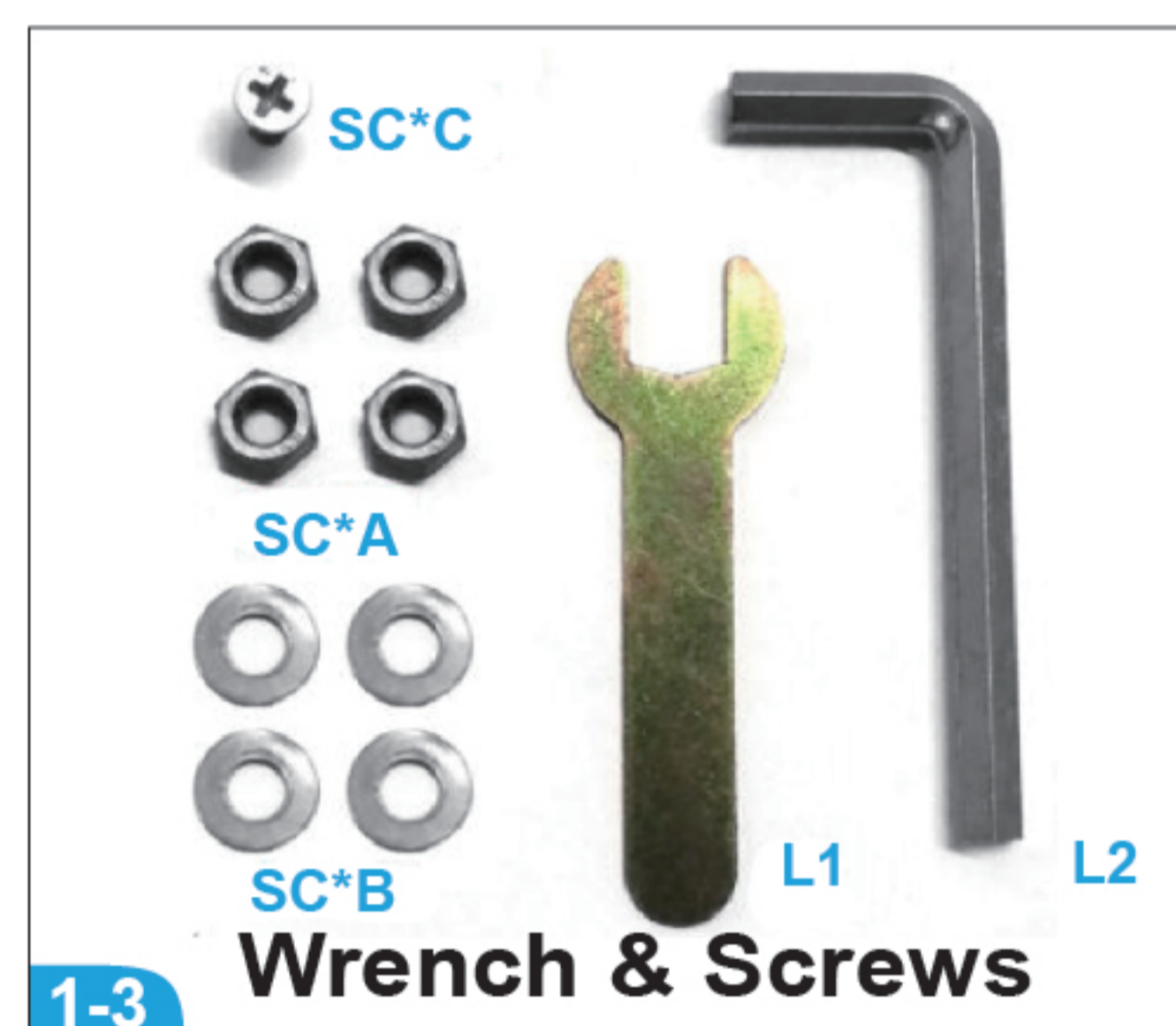
1. Parts Included



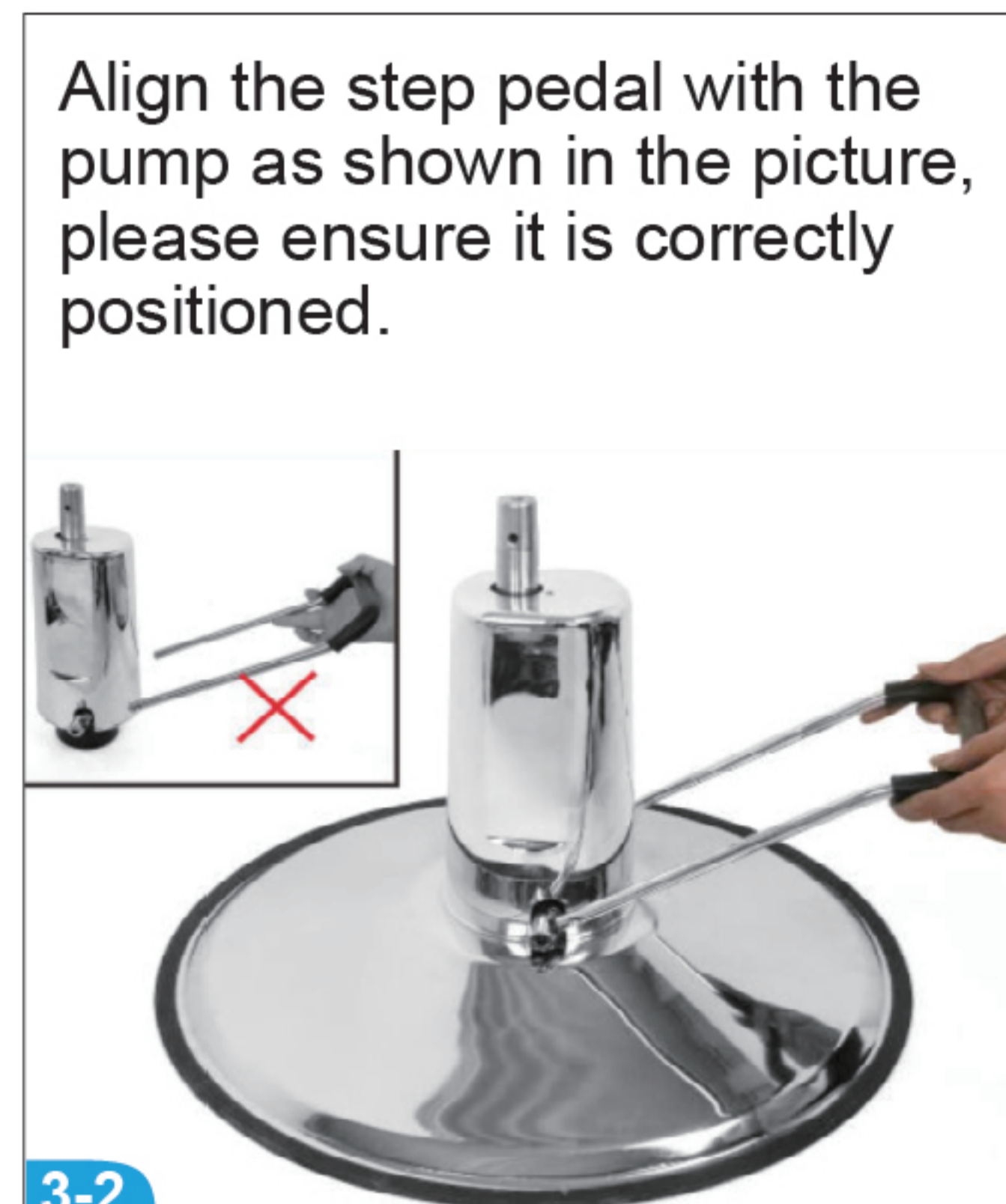
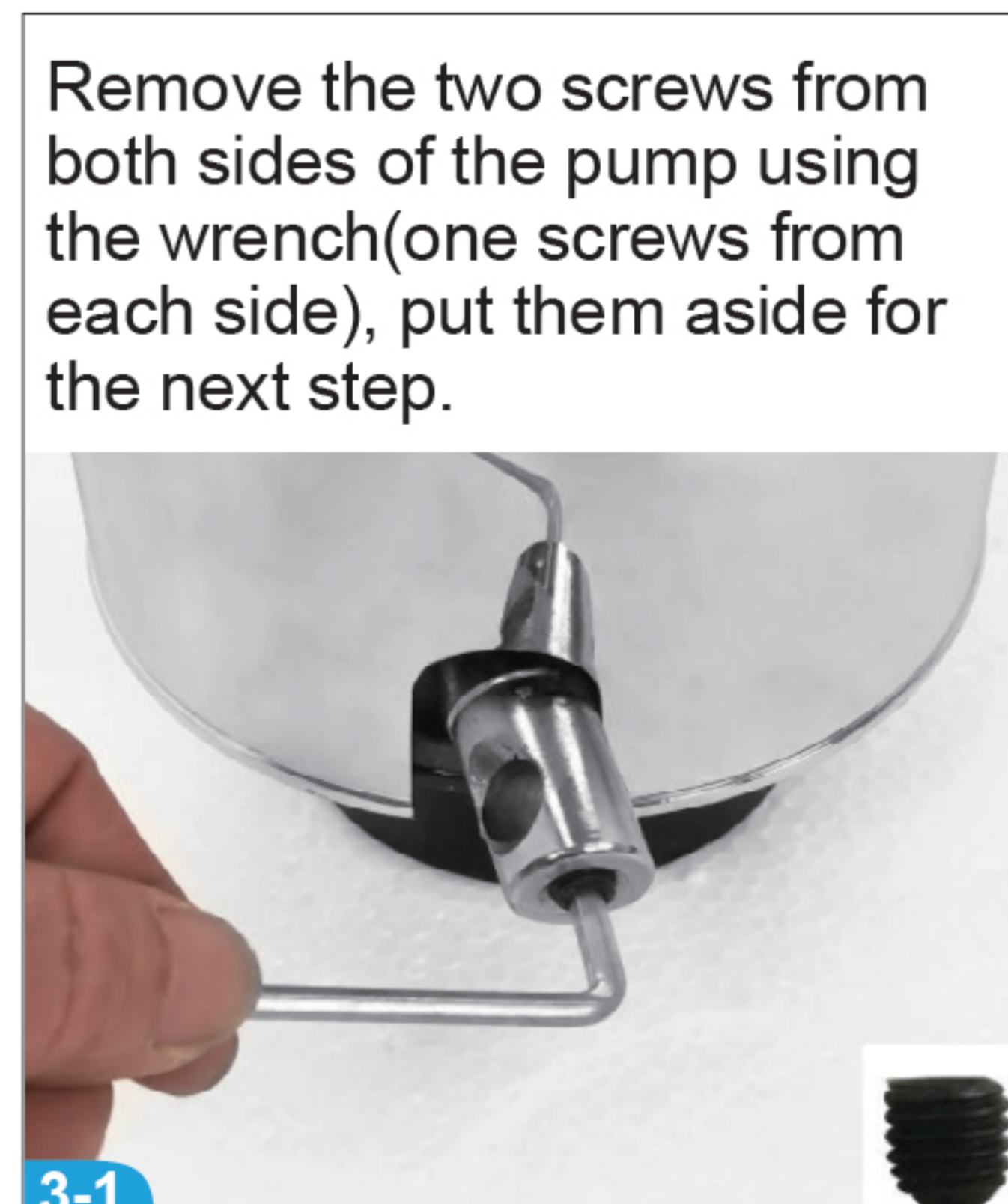
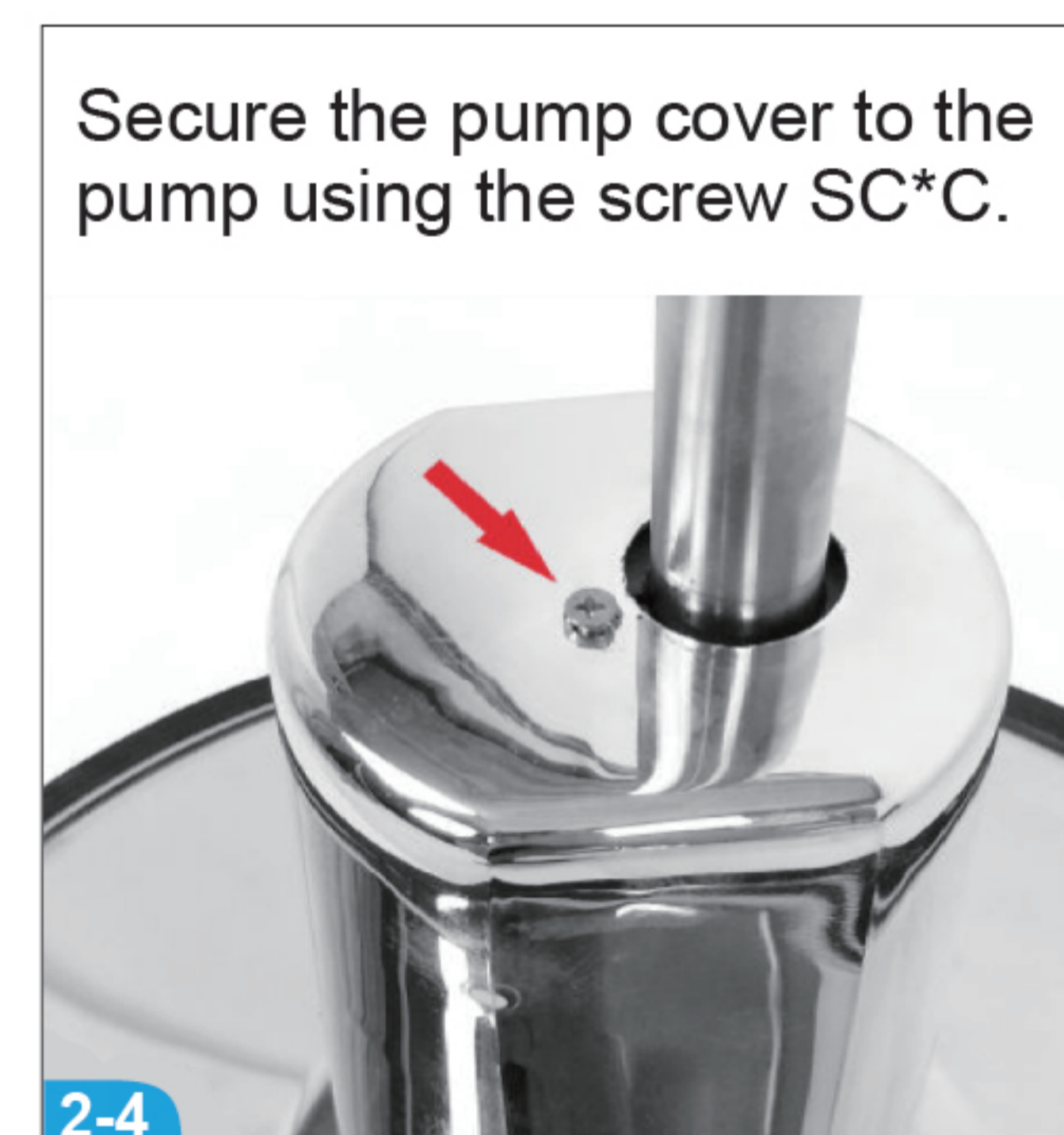
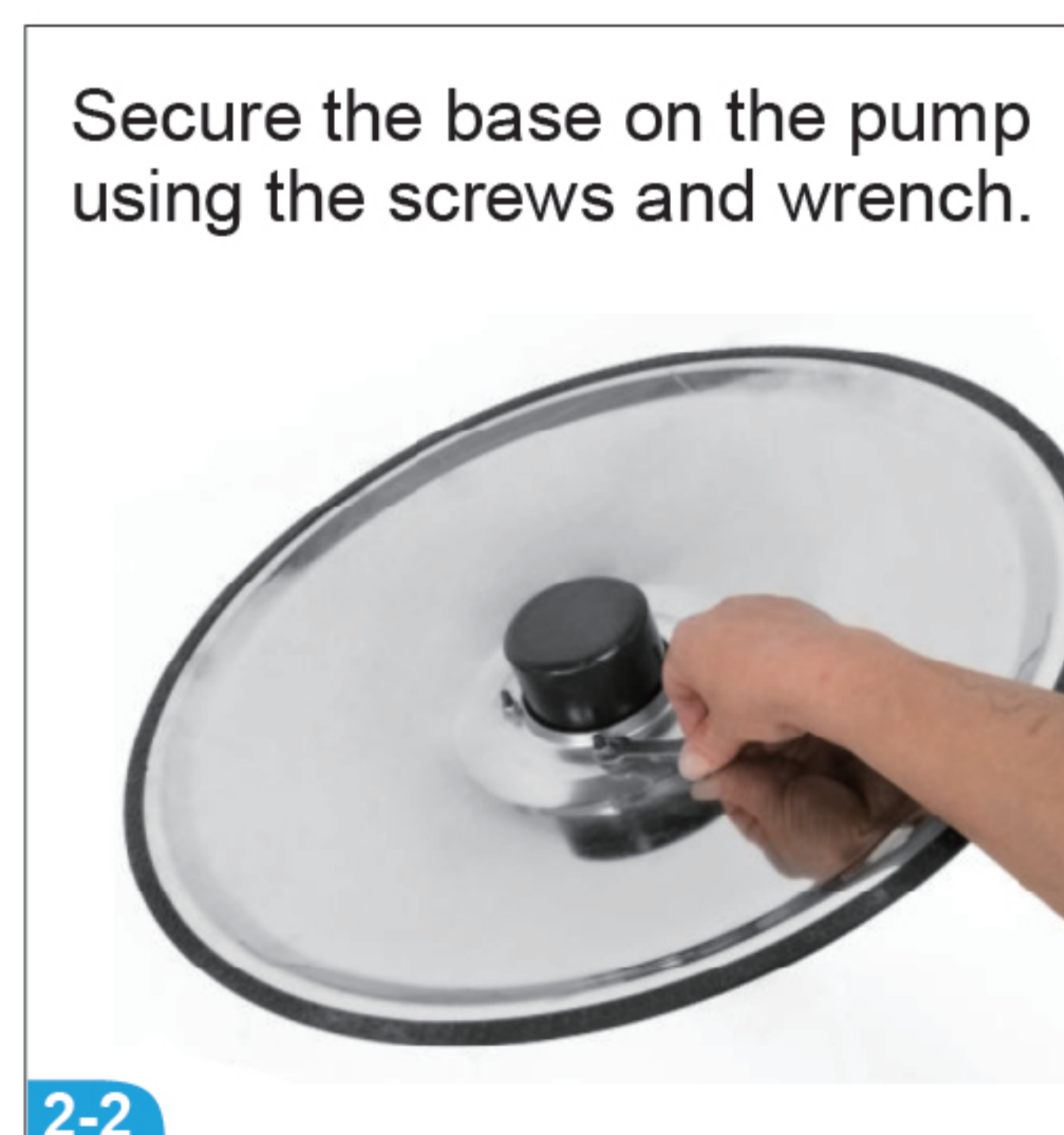
2. Installation Instruction

Please note: the top seat could be heavy, 2 people are recommended for the installation

Step 1. Attach the pump to the base.

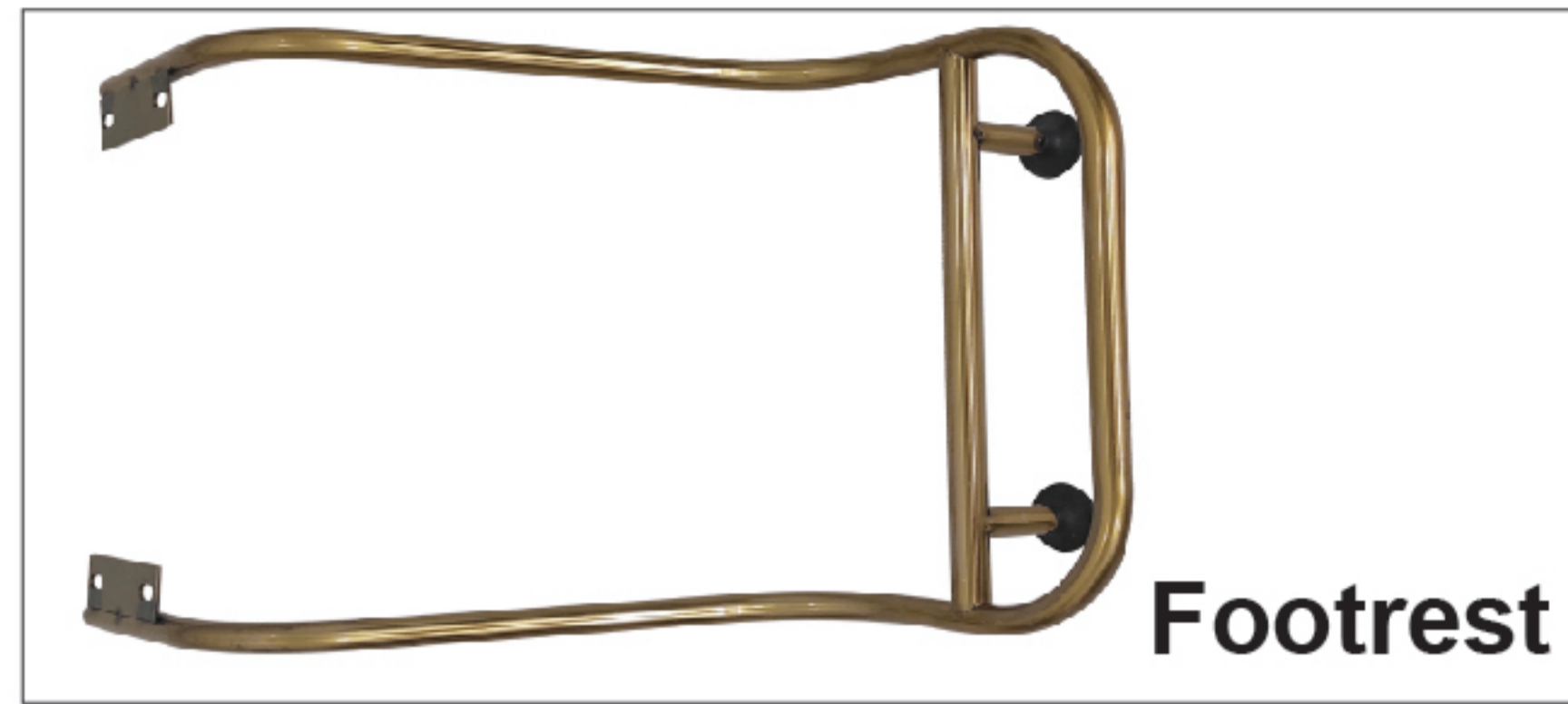


1. Parts you will need for this step.

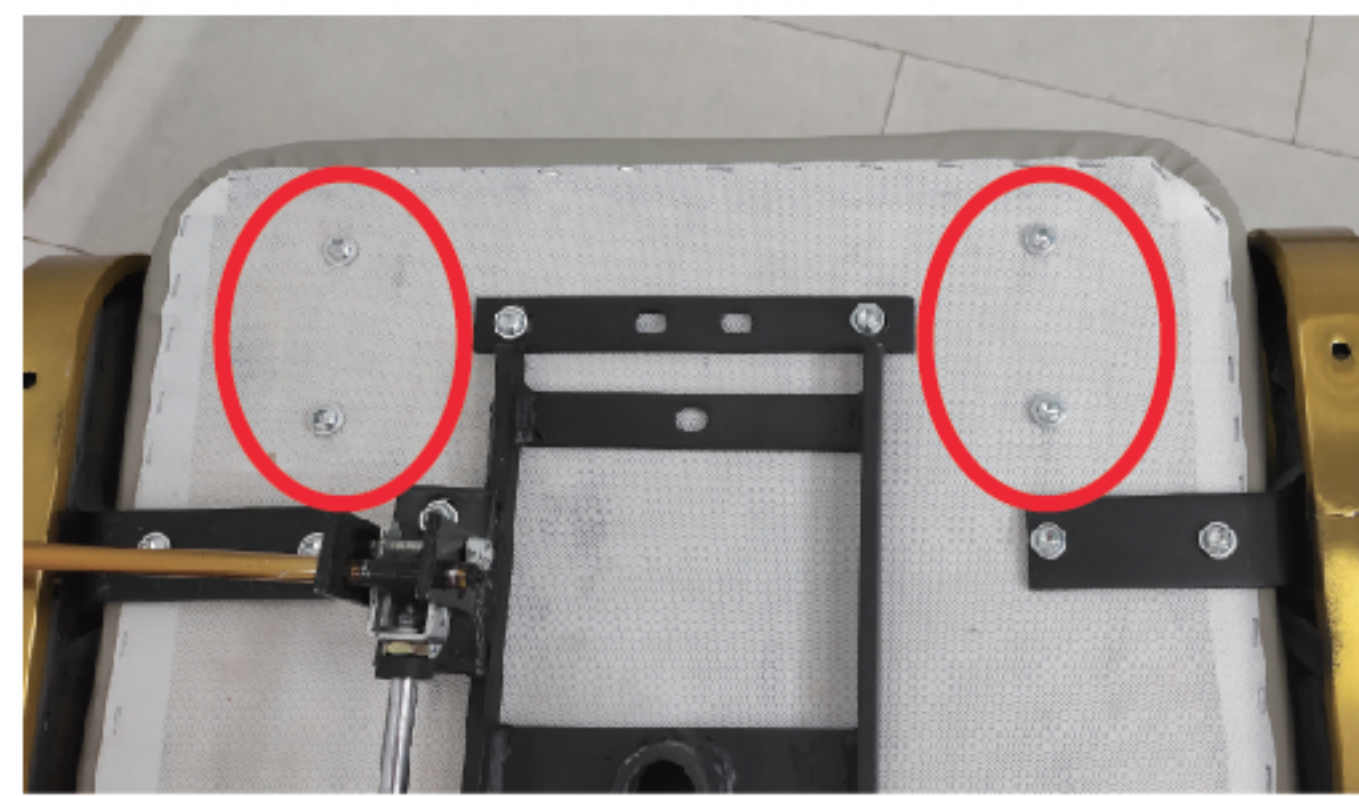


Step 2. Install the footrest

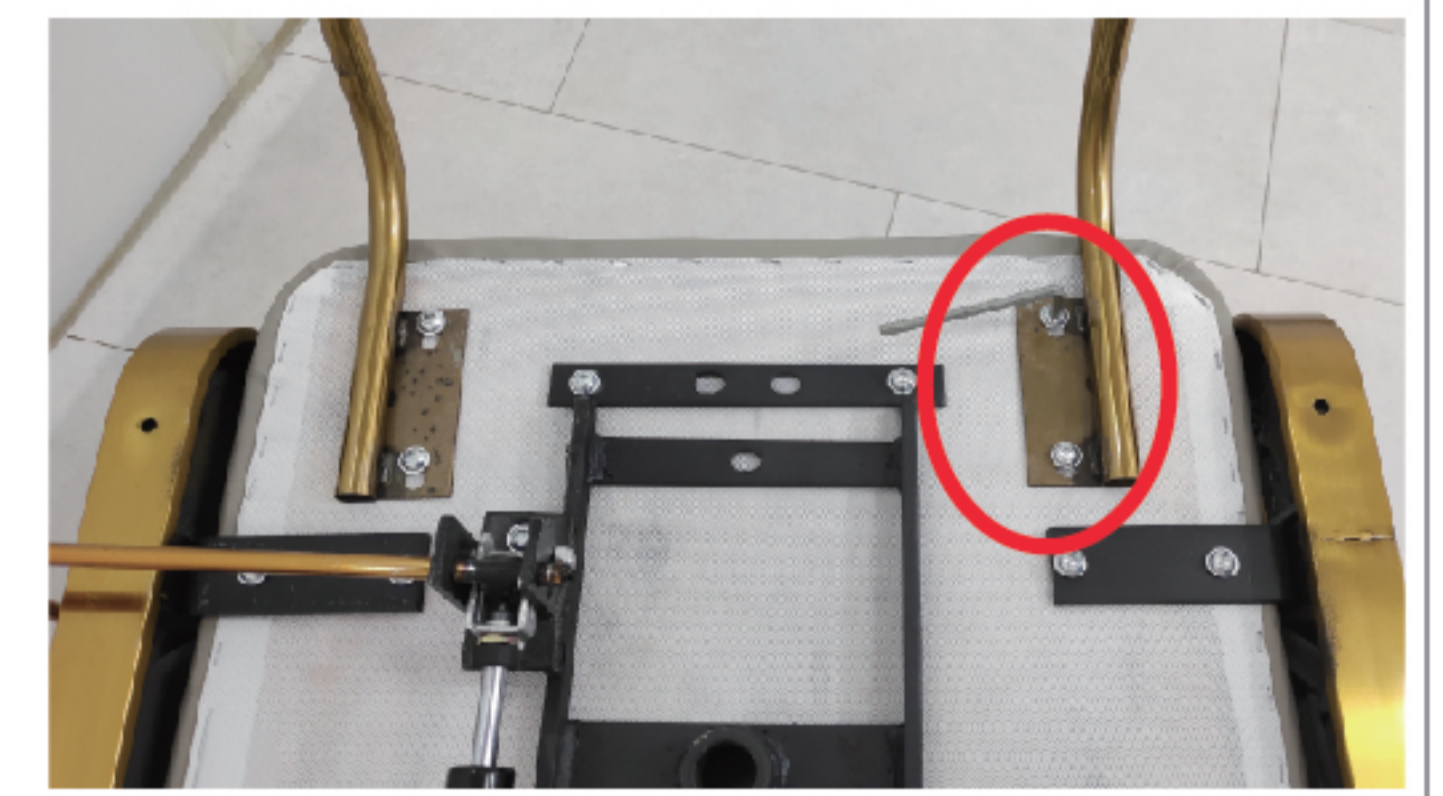
1. Parts you will need for this step.



Turn the seat upside down and use the wrench provided to remove the 4 screws pre-installed on the seat and keep them for the next step.



Align the screw holes on the footrest and seat, and re-tighten the 4 screws removed from the previous step.



Step 3. Install the seat to the pump

Place the seat onto the hydraulic pump (please note the pin on the pump toward the gap of the pump joint).



Step 4. Install the Backrest

1. Parts you will need for this step.



Align the 3 screw holes on the seat to place the backrest on the seat.



Pass the longer end of the wrench through the hole of the sleeve, and then use this tool to tighten the 3 nuts removed from the previous step to fix the backrest.

Step 5. Install the Backrest

Insert the headrest into the backrest.



Installation Completed.

