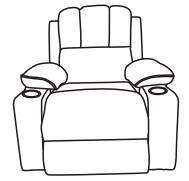


Lift Recliner Assembly Instructions


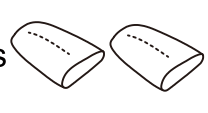

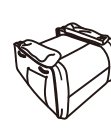


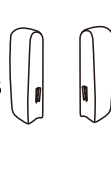


Estimated Assembly Time in Minutes

★ ☆ ☆
 <15 <45 60+

- Your recliner comes packaged in one box.
- **DO NOT** use any sharp objects to open plastic wrapped components as damage to product or components may result.
- Carefully remove all of the components from the packaging and set aside for assembly.
- Assemble on a soft surface to prevent scratching the finish.
- Zip ties are used to secure your recliner cords and avoid damage - do not cut.

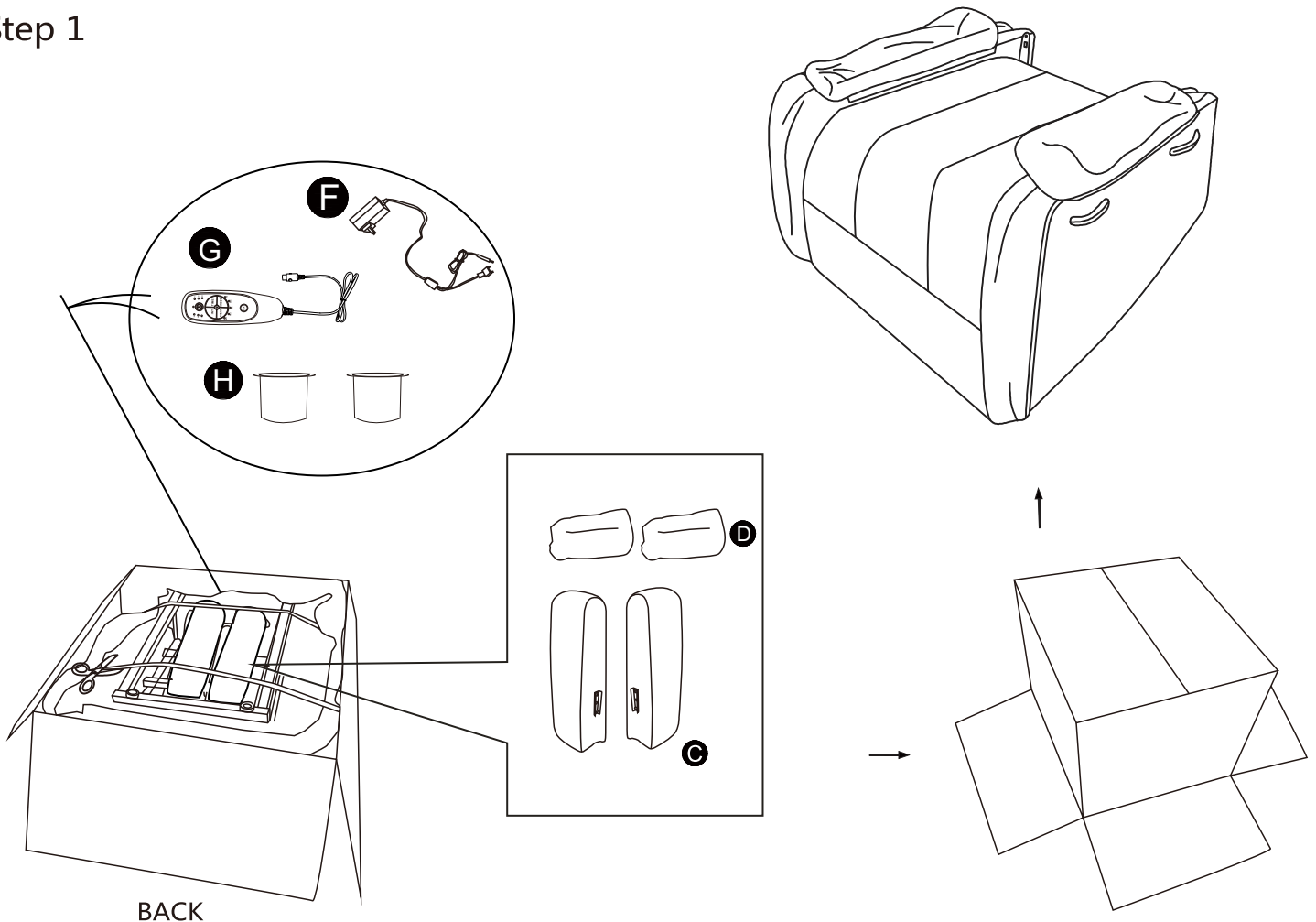


Parts List

A 1 x Back 	D 2 x Arm Pads 	G Remote Control 
B 1 x Seat 	E 1 x Spring Coil Cushion 	H x2 Cup Holder 
C 2 x Back Wings 	F 1 x Power Kit 	 Hardware bag can be found under the seat.

Assembly

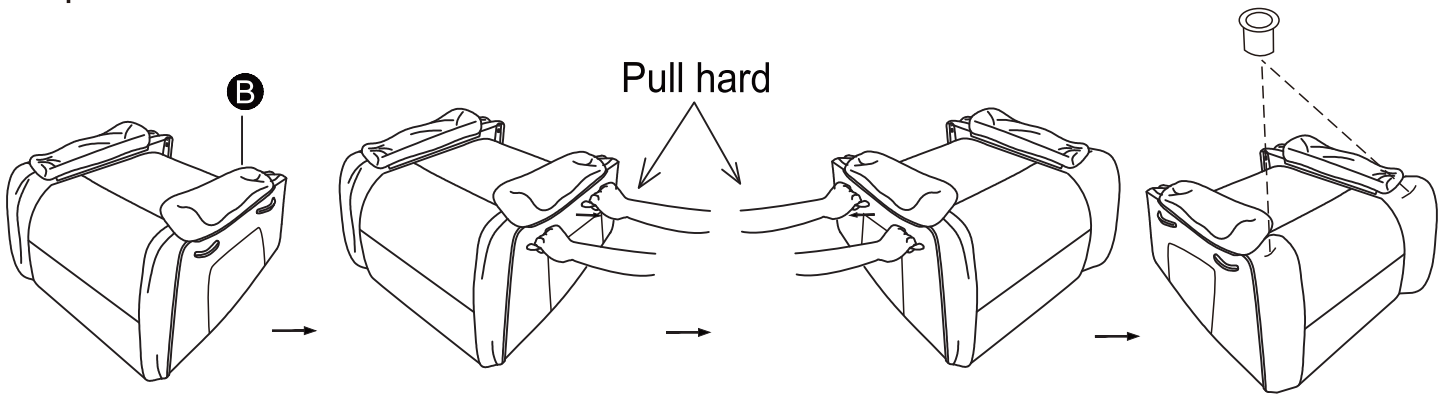
Step 1



BACK

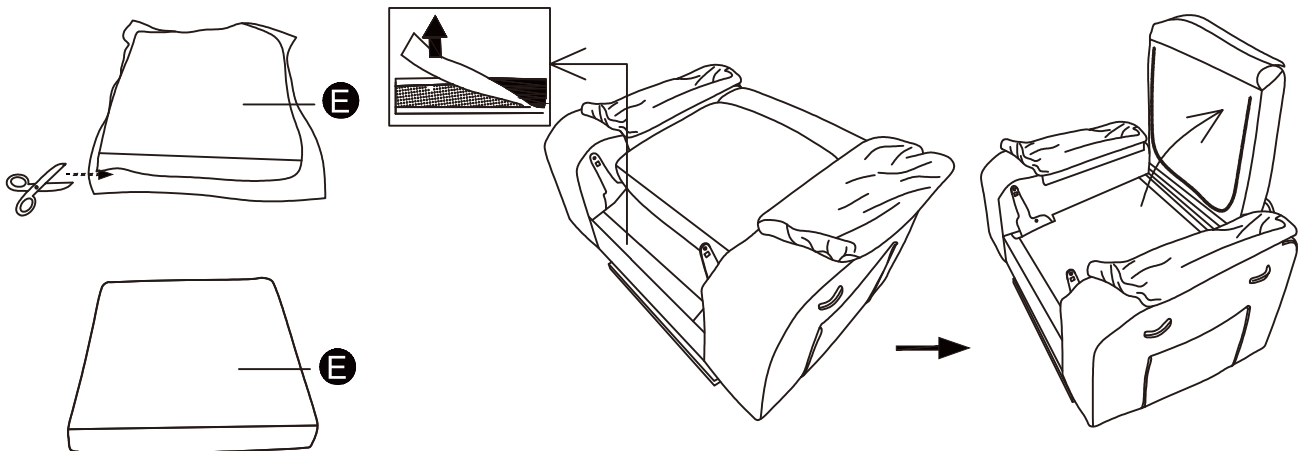
Assembly

Step 2

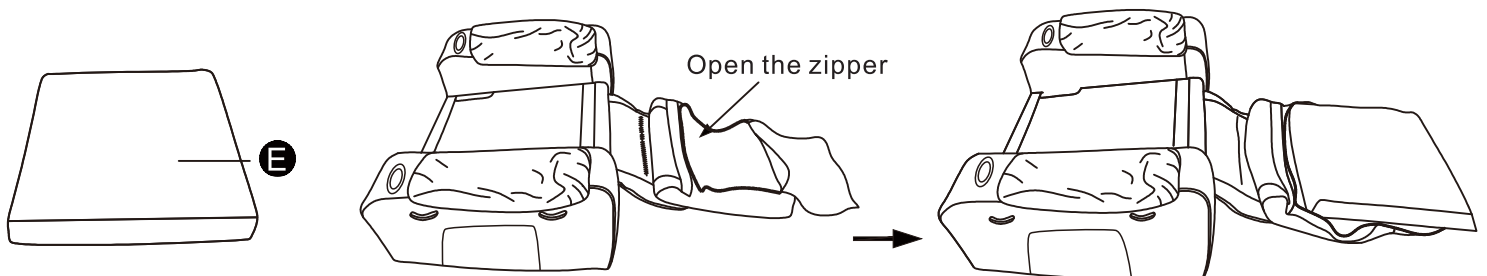


Hold the handle of the arm and pull hard to make it stretch out.

Step 3



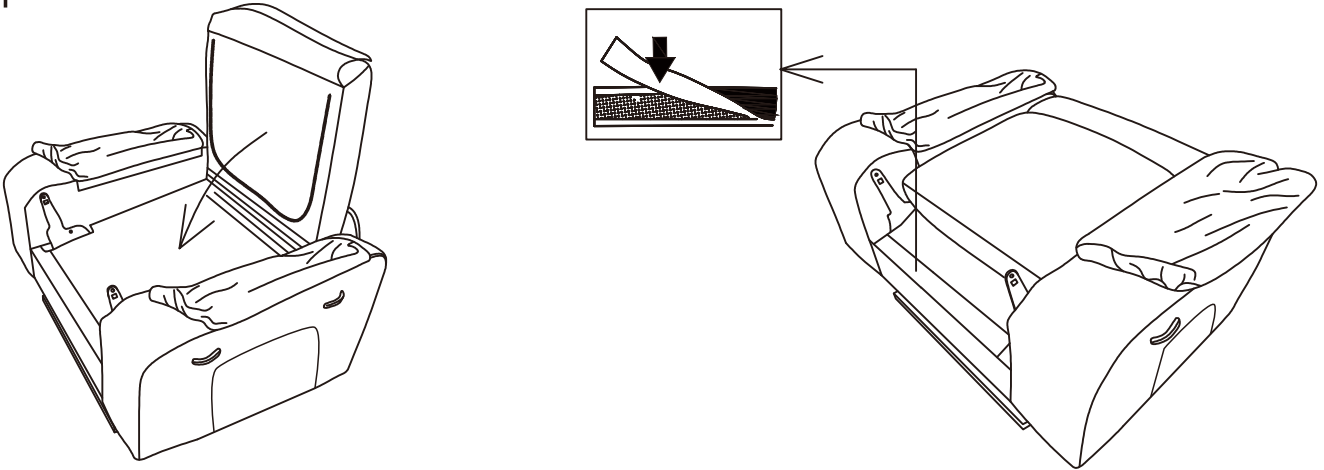
Step 4



Put spring coil pad inside of the seat cushion cover and zipped.

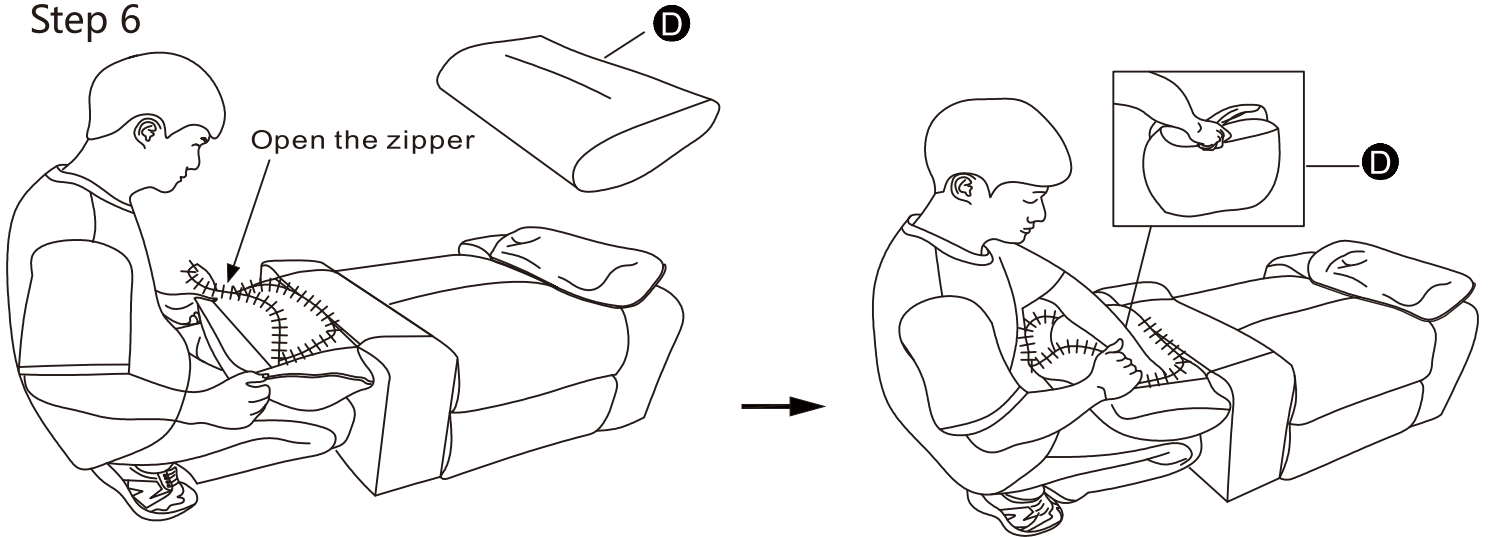
Assembly

Step 5

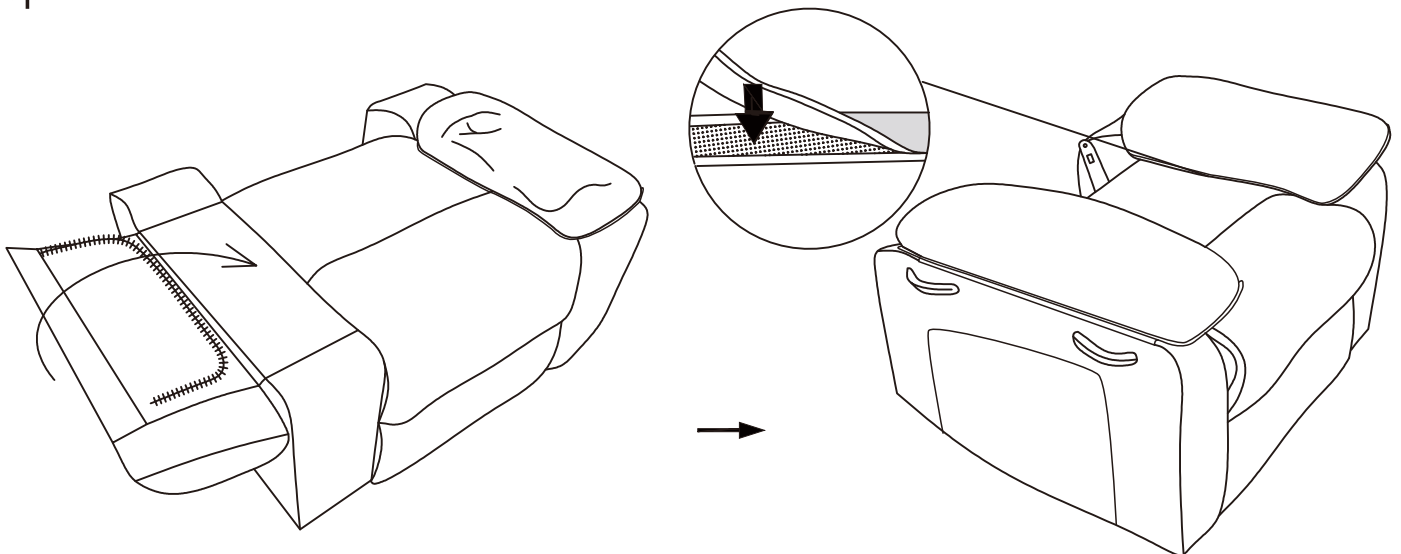


Then put the whole seat cushion on the center of seat base correctly and tighten the velcro.

Step 6

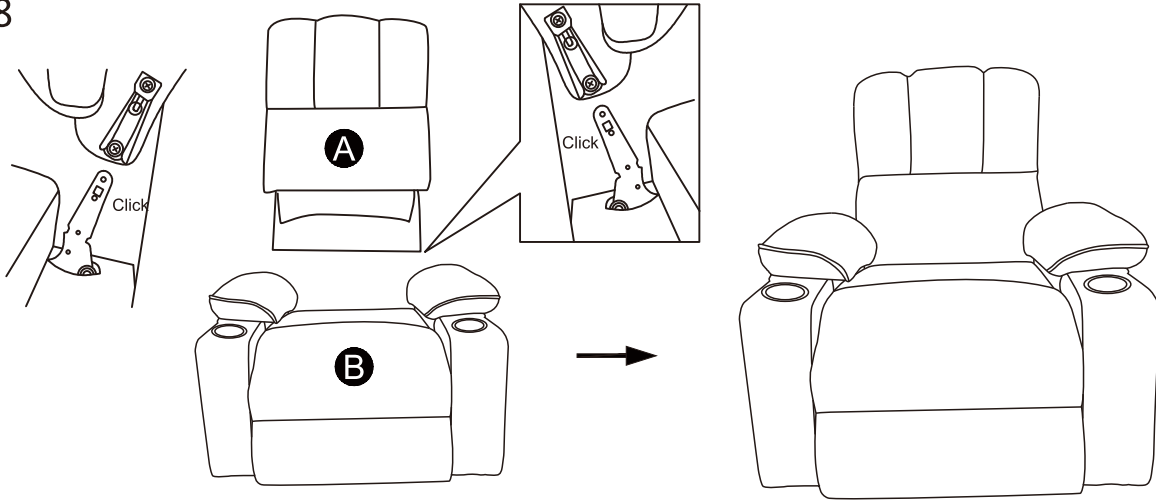


Step 7

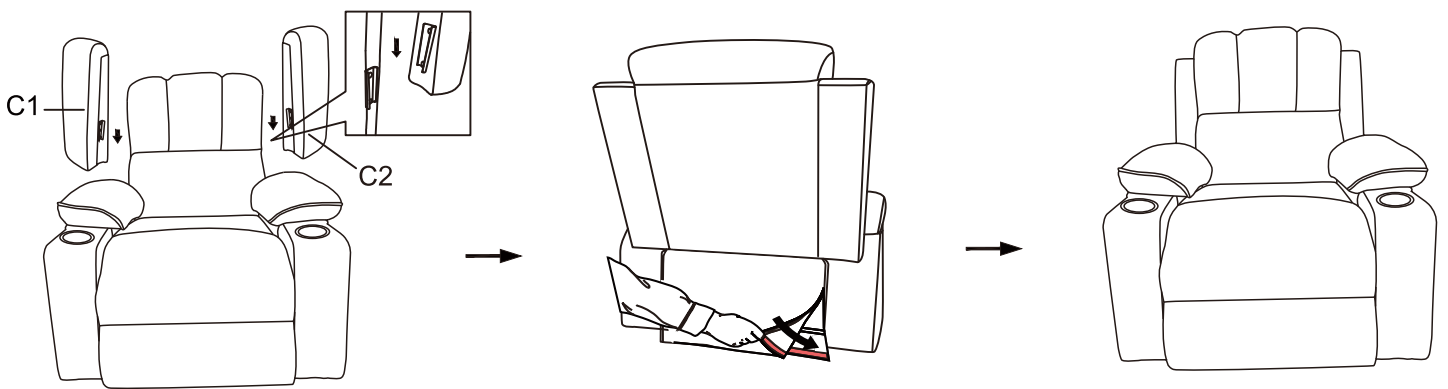


Assembly

Step 8

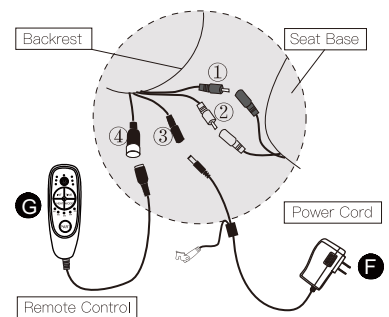
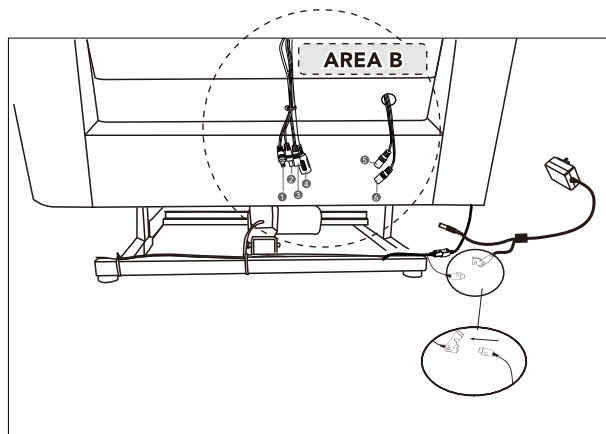


Step 9



Step 10

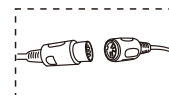
The method of connecting the cables.



AREA B

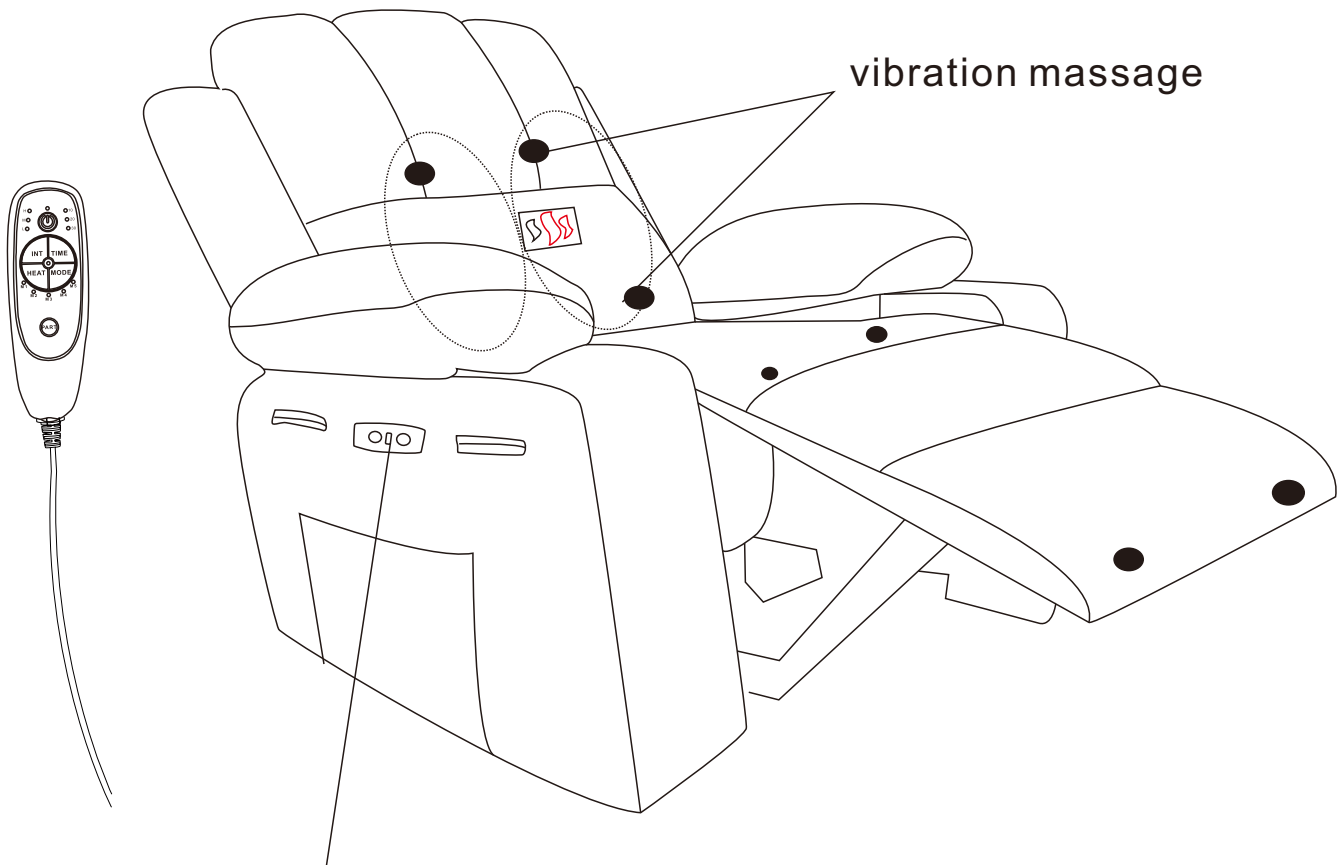
Connect ① ② with wires of same color from the seat base.

Connect ③ with Power cord ⑥ and ④ with Remote control ⑦.



Assembly

Step 11



Notice:

1. Power. Plug the power cord into a power source.
2. Recline the backrest and raise the legrest. Press once the Recline & Legrest button to recline and lift the legrest to the desired position.
3. Press the RST button once to restore the chair state.