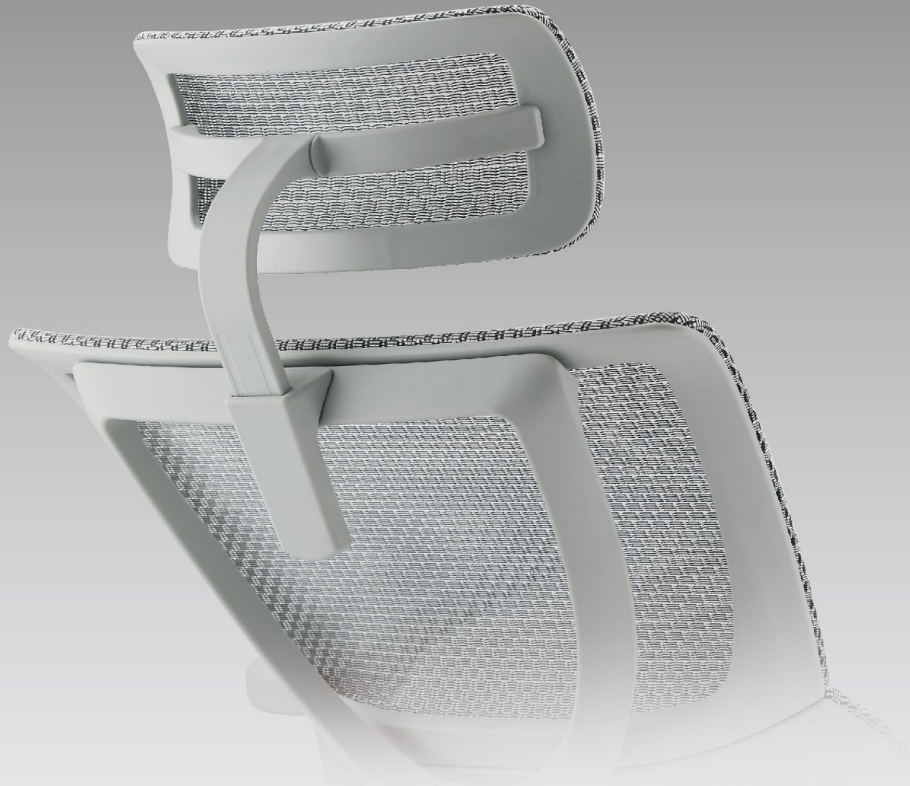


HEADREST ASSEMBLY GUIDE



PARTS



SCREW X 3
(1 AS SPARE)



SCREWDRIVER X 1



HEADREST X 1

ASSEMBLY STEPS

1 Insert a screwdriver into the hole and lift the cover up



2 Align the headrest buckle with the hole on the back of the chair



3 Tighten the screws to secure the headrest

