

SKANSEN

ASSEMBLY INSTRUCTIONS | D172, D175, D176

All NovaSolo products are:

Designed in Denmark.
Made in Indonesia.
Manufactured by: PT. Nova Indonesia.

Imported into Canada and United States by:

Nova Solo Furniture LLC
3651 Lindell Road Suite D319
Las Vegas NV 89103
United States

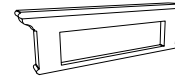
Imported into Australia by:

Nova Solo Australia PTY Ltd.
TC's Transport and Logistics
21 Merola Way, Campbellfield, VIC, 3061
Australia

NOVASOLO

SKANSEN

ASSEMBLY INSTRUCTIONS | D172, D175, D176



(A) 1x Coatrack

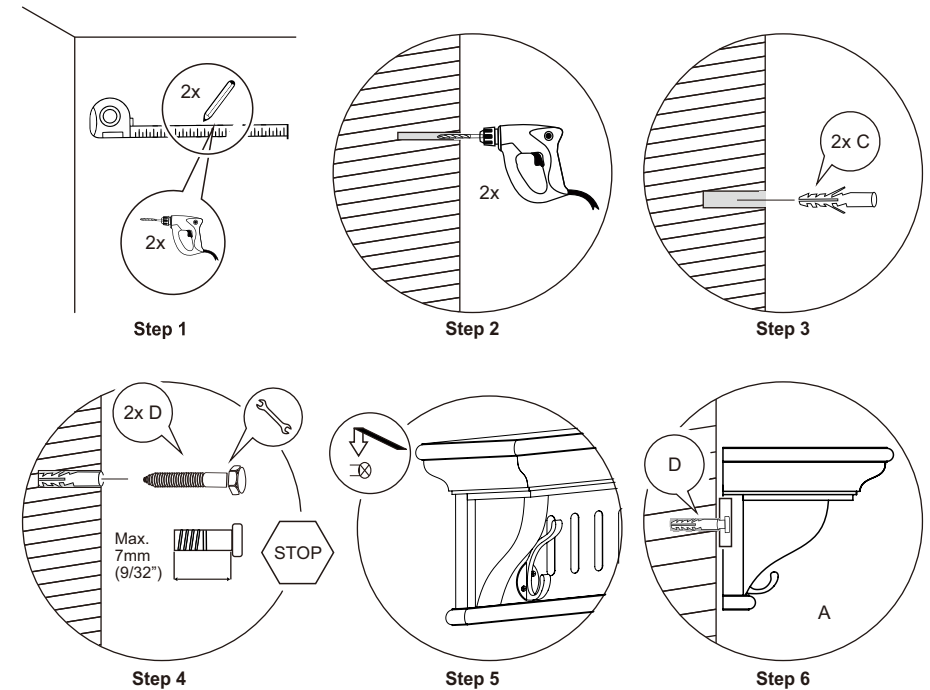
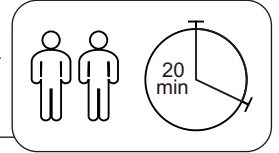
(B) 2 x Wall Brackets Located on Backside of Product

(C) 2x S10 Fischer Plugs

(D) 2x Hex Bolt S10

Prepare for Installation

- Use an 8mm drill bit (not included) for Step 2.
- Use a 16/17mm wrench (not included) for Step 4 to properly tighten Part D.
Note: the Hex Bolt head diameter is 10mm.
- Coatrack must be mounted directly into a concrete wall or stud.



Manufacture Date



Always use the proper tools during assembly and follow the steps in order—DO NOT skip any steps. Carefully check all packing materials for assembly hardware. If any parts are missing, contact the retailer from which you purchased the product to obtain replacements. **DO NOT USE SUBSTITUTE PARTS.** When assembling, tighten screws by hand initially. Once all screws are in place, use the provided tool for final tightening. Periodically check that all hardware (bolts, screws, etc.) is secure. **DO NOT STAND ON THE PRODUCT DURING ASSEMBLY.** If the instructions indicate that assembly requires two or more people, **DO NOT ATTEMPT TO ASSEMBLE IT ALONE**, as this poses a risk of injury.