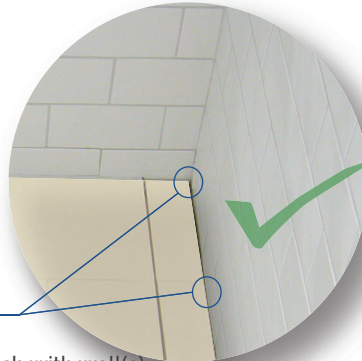


**STANDARD LINEAR DRAIN**

Installed w/ strips of tile between drain and wall(s).



**DUFR LINEAR DRAIN**

Installed flush with wall(s) for a clean finish seamless look.

The DUFR Series of linear drains are designed to meet the classic appeal of the traditional linear drain with the added benefit of close wall installation.

This is achieved with its innovative design by eliminating the slither of tile between the back wall and drain, typically required for bonding the waterproof or the need to float the finish tile for the same aesthetic appeal.



**DUFR-TN: (Backwall Return Flange Only)**  
*\*Ideal for curbed or curbless installation with 1/8" to 3/8" thick wall tile\**

**DUFR-SF: (Three Side Return Flange)**  
*\*Ideal for wall to wall installation with 1/2" to 3/4" thick wall Slab\**  
 - SPECIAL ORDER ONLY

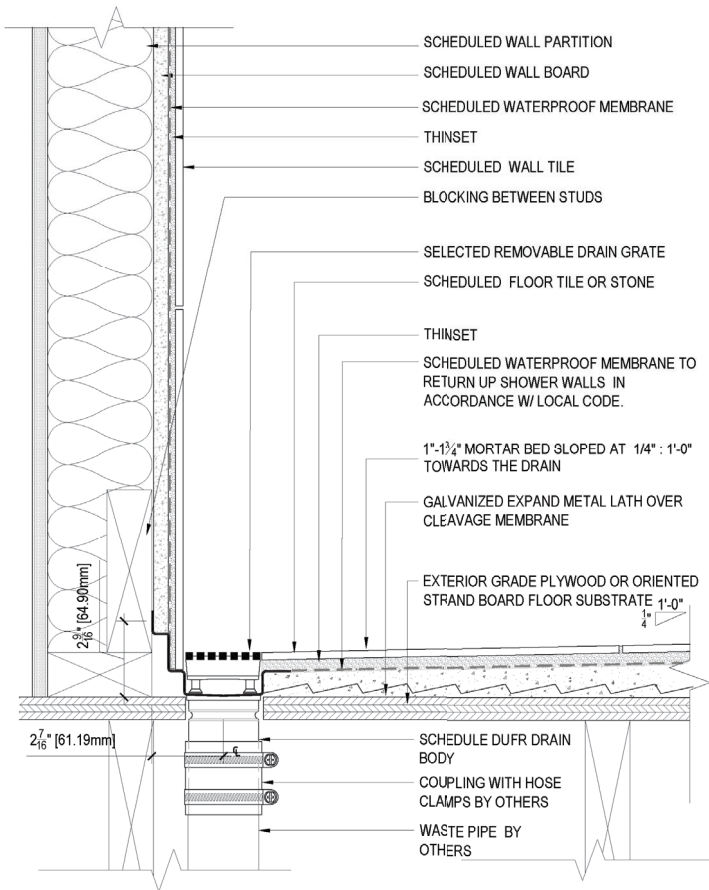
**DUFR-SN: (Backwall Return Flange Only)**  
*\*Ideal for curbed or curbless installation with 1/2" to 3/4" thick wall Slab.*  
 - SPECIAL ORDER ONLY



**SCAN ME**  
FOR INSTALL VIDEO



**SCAN ME**  
FOR CATALOG



1. Verify compliance with local code requirements and the Tile Council of North Americas (TCNA) guidelines for the sub-floor. Ensure the sub-floor is level and completely free from dust and debris.
2. Determine the precise location of the drain outlet. Typically, linear drains span a dimension from the finish face of one stud to the finish face of the opposite stud on the sides, aligned with the stud framing.
3. Mark the desired location and cut out the drainage hole.
4. Apply a layer of cleavage membrane or tar paper over the subfloor.
5. Install a layer of metal lath over the cleavage membrane or tar paper.
6. Secure the specified DUFR linear drain body to the distribution line and the main waste line using couplings and hose clamps, or according to local code requirements for a connection to stainless steel.
7. Install scheduled framing header/blocking and stud above the DUFR drain body, ensuring a secure attachment to the wall studs.
8. Secure scheduled wallboard onto the studs.
9. Spread a primary mortar bed across the predetermined shower area, sloping it towards the drain body at a 1/4-inch slope.
10. Prepare the drain surface by cleaning it with acetone to remove all grease and dust. Wet a soft sponge or rag with acetone and clean the surface in the direction of the grain. Then, use a second rag with soapy water (containing mild detergent) to further clean the drain surface with acetone.

11. Install a waterproofing membrane (liquid or sheet) across the floor/wall areas and over the DUFR drain body flange as follows:
  - a. For liquid membrane installation, follow the manufacturer's recommendations and roll-apply the required layers over the drain flanges and wall boards.
  - b. For Sheet membrane installation, use a liberal amount of urethane sealant across all bonding flange surfaces, press the sheet membrane securely to the bonding flange, and allow the sealant to set as per the manufacturer's recommendation. Then, cut away the excess sealant and membrane from the channel opening.
12. Spread thin-set across the floor/wall area using the trowel spacing size recommended by the tile manufacturer or stone supplier.
13. Install the selected tile or stone across the floor/wall area.
14. Spread grout across the floor/wall area.
15. TIL-Drain Grate Tile Installation:
  - a. Clean the drain and grate of oils and dust using stainless steel cleaner.
  - b. Cut and install a layer of waterproofing membrane inside the tile tray.
  - c. Spread a layer of thin-set inside the tile tray.
  - d. Cut and install the selected tile or stone.
16. Install the drain grate.
17. Wipe clean all surfaces of dust and debris.

Please follow these instructions carefully to ensure a successful and compliant installation.