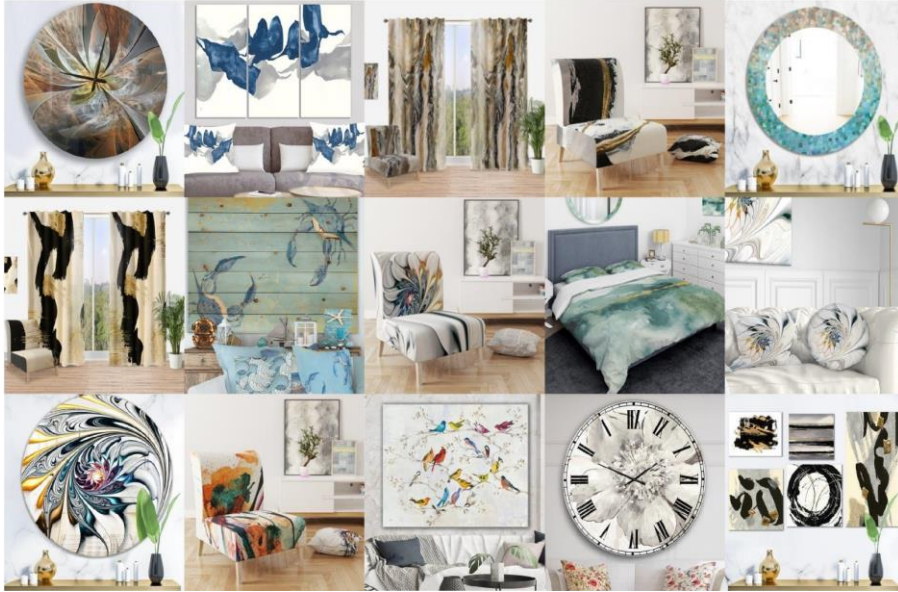


Please read these instructions prior to installing your new clock



DesignArt

DESIGNART METAL WALL CLOCK

Thank you for your order!

Please note that each and every sale of Designart artwork, be it an oil painting, canvas art print, metal art, wood art, designed clock or one of our textile items supports an artist and allows them to live through their passion.

Every Designart creation started with an artists inspiration. A vision of what could be where nothing currently is. The deep desire to express one's own creativity and share it with the world. Through our many product lines, Designart allows artists and designers to express their ideas and creativity across many mediums.



To watch the video tutorial of how to reset your clock, please visit

<https://designartusa.com/pages/videos>



Contact Us:

We are always happy to help! For product related questions, product damages or returns, Please contact us prior to returning to the store or online retailer.

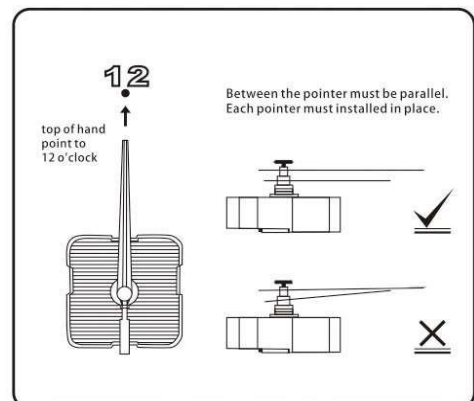
Email: sales@designartusa.com Call: 1-888-604-2215 Mon-Fri 10AM-4PM EST

***IMPORTANT* Due to vibration during shipping, the hands on the clock may move and fall off track.**

Please note that the clock hands must not touch, in order for the clock to keep accurate time. You must have a 2mm - 1/8 inch gap between the 2 clock hand (As shown in photo provided).

If the clock hands have moved during shipping, please read the section troubleshooting on the back of this page.

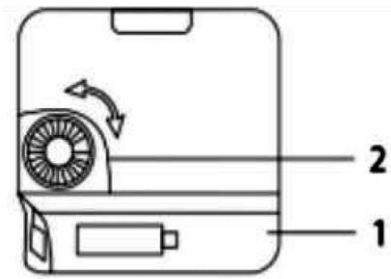
If the clock hands are bent and are unable to straighten, please contact us and we will quickly send you replacement clock hands.



Battery :

4. Insert the Battery into the back of the clock. Pay attention to the +,- direction. The movement may be damage if the battery is not properly inserted.
5. Turn the knob on the left side in a counter clockwise direction to adjust the time.
6. Replace the battery once the battery runs out of power.

Note: Only use standard Alkaline batteries in your new clock. NOTE: do not use rechargeable or extra powerful batteries (such as Duracell Extra Power) as it will damage the clock mechanism.

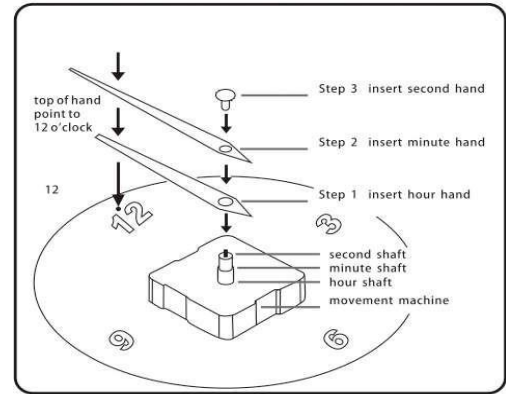


Troubleshooting:

If you notice your clock hands are not moving, please follow these five simple and quick steps below; or watch our helpful video using the link provided :

1. Begin by slowly removing the small pin or screw (holding clock hands).
2. Remove the top hand (largest one) completely off clock.
3. Push the small hand, still on the clock, down until you feel it "click" into place. It should feel secure.
4. Repeat step for the longer hand. It should also click into it's correct place on the track.
5. Once you have put the two hands on securely, install the small pin (that looks similar to a push pin) to secure the hands down. For our Larger clock, it will look like a screw.

Finally, rotate both hands twice, counter- clockwise for a full 360 degrees and set the time.



**** For your Convenience:** We have included an extra pin to hold down the clock hands as it sometimes falls out of place during shipping** -- The additional pin is located in a plastic bag attached to the back of your clock. **

Clock Hanging Instructions:

You will need :



Screw Driver



Measuring Tape

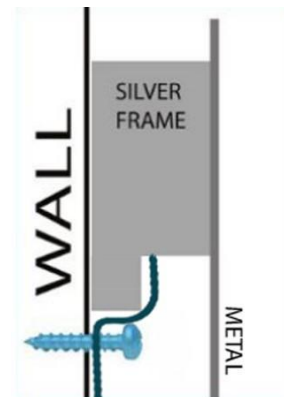


Screws
(included in your order)



Hooks

1. Determine where you would like to hang your new clock. Your clock has the wall hanging bracket built directly into the actual wood frames.
2. The top part of each frame is designed with a lip, which you will hang over the included screws. We recommend using 2-4 screws, depending on the size of your clock Set the time by manually moving the clock hands. Once you have set the correct time, insert the included battery in the back of the clock. The clock should start ticking as soon as the battery is installed.



WARNING - DISCLAIMER : Your metal artwork has sharp edges and/ or corners that can cause bodily injury. If you choose to hang your new metal artwork over a bed, sofa, sitting area or anywhere that the artwork could fall on a person and cause injury, please leave at least 8 inches in between the artwork and your furniture/person. While the majority of our customers hang this metal artwork on their walls for years without any issues and artwork falling down and causing damage is rare, we prefer to advise our customers to the possibility. While Designart Inc diligently inspects every piece of artwork we create prior to it being packaged and use the highest-grade materials in our creation process, household temperatures, humidity, manipulation or other factors may affect the adhesive over time. While DesignArt Inc will certainly replace any defective item, your use of this metal artwork is at your sole risk as DesignArt Inc expressly disclaims all warranties of any kind regarding property damage, bodily injury or any and all other damages that may result by the use of this metal artwork.

For product related questions, product damages or returns, Please contact us prior to returning to the store or Online retailer. Email: sales@designartusa.com Call: 1-888-604-2215 Mon-Fri 10AM-4PM EST