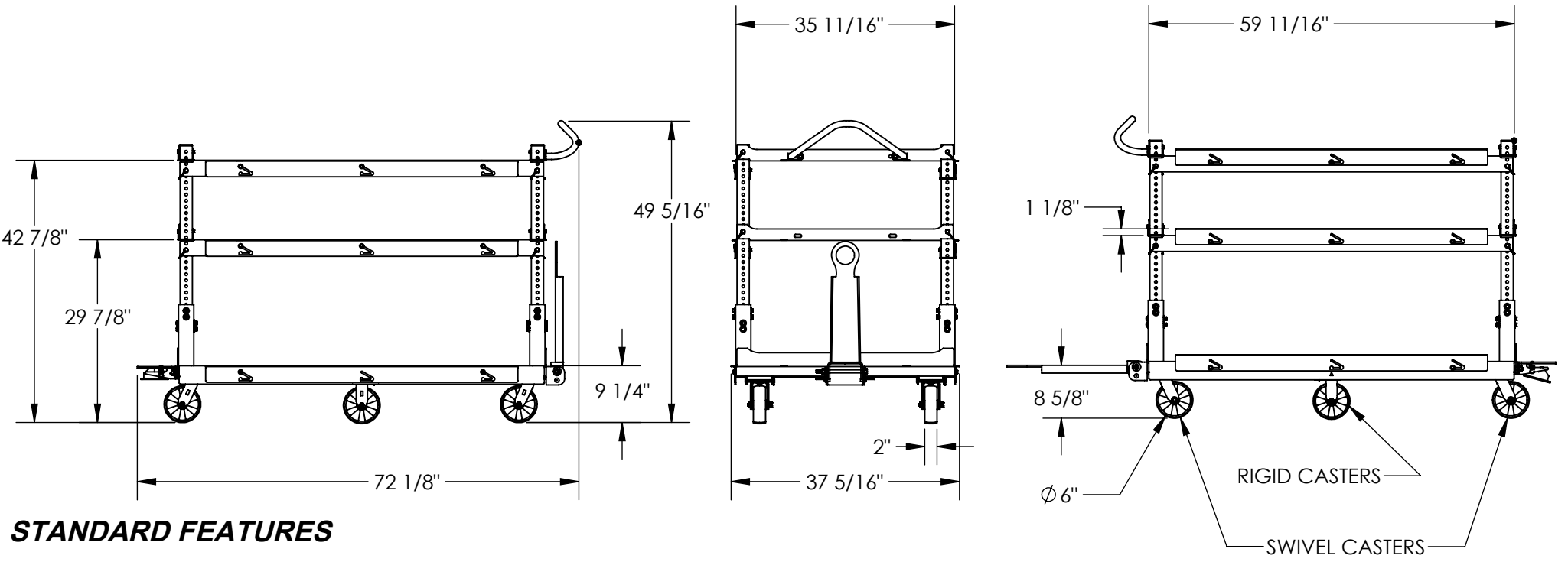


APPROX WEIGHT: 429.91 lbs.  
DOES NOT INCLUDE WEIGHT OF POWER OR PACKAGING!!!

# ADJUSTABLE ERGO CART - AEC-3660-3-GFN

\*\*\* ANY ADDITIONS, DELETIONS, OR OMISSIONS MUST BE CORRECTED ON THIS DRAWING AS THIS DRAWING WILL BE CONSIDERED ALL INCLUSIVE \*\*\*  
ALL GRAPHICS PROVIDED ARE FOR REFERENCE ONLY. IF CERTAIN DIMENSIONS ARE CRITICAL PLEASE VERIFY THOSE DIMENSIONS WITH YOUR SALESPERSON

ALTERNATE VIEW WITH ALL  
MOVING PARTS IN THEIR  
RESPECTIVE FINAL POSITIONS



## STANDARD FEATURES

MODEL NUMBER IS AEC-3660-3-GFN  
OVERALL WIDTH IS 37 5/16"  
USABLE WIDTH IS 35 11/16"  
OVERALL LENGTH IS 72 1/8"  
USABLE LENGTH IS 59 11/16"  
OVERALL HEIGHT IS 49 5/16"  
FOUR GLASS FILLED NYLON Ø6" X 2" SWIVEL CASTERS  
TWO GLASS FILLED NYLON Ø6" X 2" RIGID CASTERS

MAX CAPACITY IS 3000 LBS  
- 1800 LBS IN BOTTOM SHELF  
- 600 LBS/EACH IN MIDDLE & TOP SHELF  
STEP-ON RELEASABLE HITCH  
SEMI-AUTOMATIC LOCKING TOW  
ADJUSTABLE SHELVES WITH RETAINABLE LIP

APPROVAL

I, THE UNDERSIGNED, AGREE THAT THE PRODUCT AS REPRESENTED SATISFIES DESIGN AND DIMENSION REQUIREMENTS. I ALSO ACKNOWLEDGE MY DUTY TO CONFIRM PRODUCT AND INSTALLATION COMPLIANCE WITH ALL APPLICABLE FEDERAL, STATE AND LOCAL REGULATIONS AND STANDARDS.  
**ANY MODIFIED UNITS ARE NON-RETURNABLE**  
[ ] As drawn [ ] As marked  
Signed: \_\_\_\_\_ Date: \_\_\_\_\_  
Printed Name: \_\_\_\_\_  
LEAD TIME WILL START UPON RECEIPT OF SIGNED APPROVAL DRAWING

## SPECIAL FEATURES

NONE

FOR INTERNAL USE ONLY PROJECT SIGN OFF	
SALES	
ENG.	
FAB.	
POWER	

DIMENSION TOLERANCE ± 1/4"

DISTRIBUTOR'S NAME:		P.O.#
VESTIL MANUFACTURING		X
DRAWN BY: SJA		W.O.#
DATE: 06/20/2016		X
REFERENCE: X	SCALE: 1:24	SALES: X
QUOTED LEAD TIME: X	QUOTE # X	FILE NAME:
		16-007-429