

CONTENT

Introduction	2
Safety Precaution	2
Parts Diagram.....	3
Installation Instructions.....	3-4
Air Outlet Installation Method.....	5
Installation.....	5-8
Operation	8-9
Maintenance	10-11
Trouble-Shooting	12
Environmental Protection	12

Introduction

Thank you for choosing this cooker hood.

- This instruction manual is designed to provide you with all required instructions related to the installation, use and maintenance of the appliance.
- In order to operate the unit correctly and safely, please read this instruction manual carefully before installation and usage.

Safety Precaution

- Never let the children operate the machine.
- The cooker hood is for home use only, not suitable for barbecue, roast shop and other commercial purpose.
- Clean the cooker hood according to the instruction manual and keep the unit from danger of burning. There is a fire risk if cleaning is not carried out in accordance with the instructions.
- Please keep the kitchen room with good ventilation before connecting this appliance; please check that the power supply cord is undamaged. A damaged supply cord must be replaced by qualified service personnel only.
- Regulations concerning the discharge of air have to be fulfilled.
- This appliance can be used by children aged from 8 years and above also the persons with reduced physical, sensory or mental capabilities or lack of experience and knowledge if they have been given supervision or instruction concerning use of the appliance in a safe way and understand the hazards involved. Children shall not play with the appliance. Cleaning and user maintenance shall not be made by children without supervision.
- If the supply cord is damaged, it must be replaced by the manufacturer, its service agent or similarly qualified persons in order to avoid a hazard.



CAUTION:

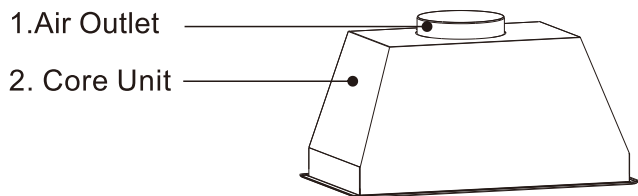
Accessible parts may become hot when used with cooking appliance.

Electrical Shock Hazard

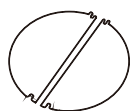
Only plug this unit into a properly earthed outlet.

If you have doubts, seek advice from a suitably qualified engineer.

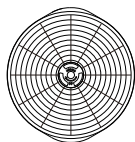
Parts Diagram



Parts Supplied



Dampers



Charcoal Filters
(Please refer to the model list on the last page)



× 14

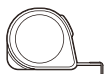
St4 × 30

(2 screws extra)

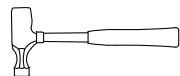
Tools Required



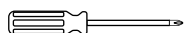
Pencil



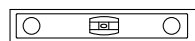
Measuring tape



Hammer



Screwdriver



Level



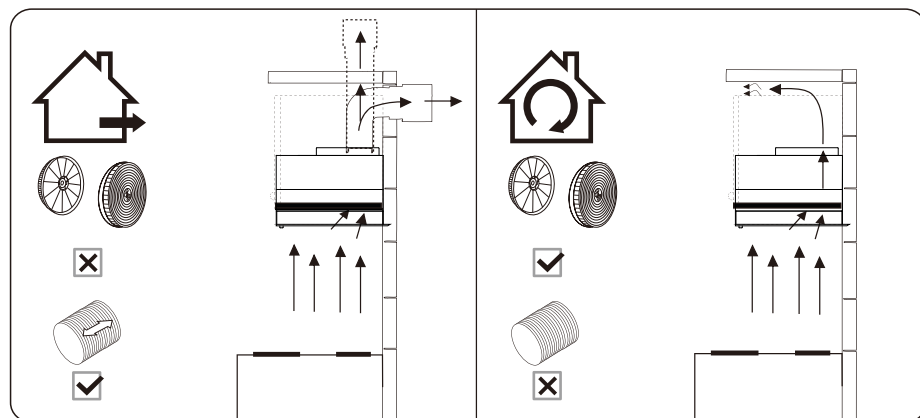
Electric drill



Duct Tape

Installation Instructions

Preparation for installation:

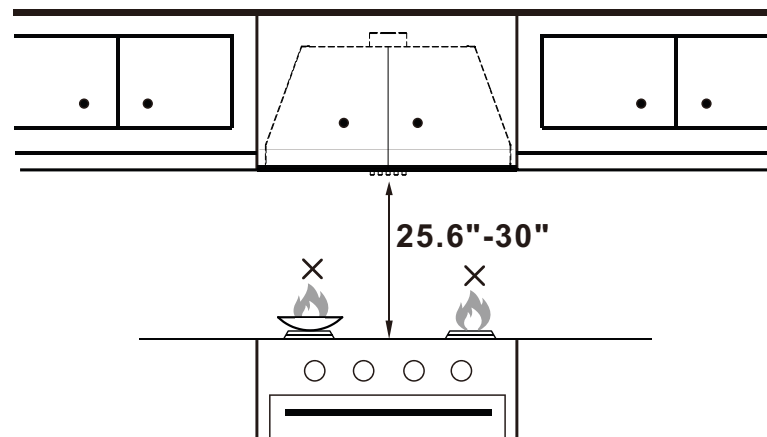


DUCTED OPTION

RECIRCULATION OPTION

a.If you have an outlet to the outside, your cooker hood can be connected as above picture by means of a pipe (with an interior diameter of 150mm). If you don't have an outlet to the outside, you can go with recirculation mode by using charcoal filters.

Installation Requirements

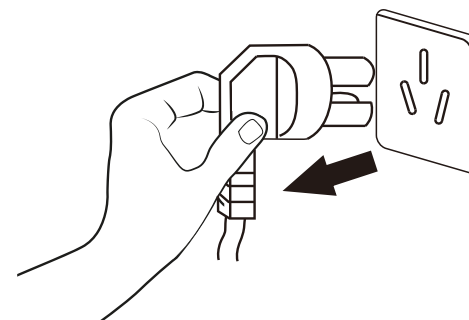


The cooker hood should be placed at a distance of 25.6"-30" above the cooktop for the best effect.



Note

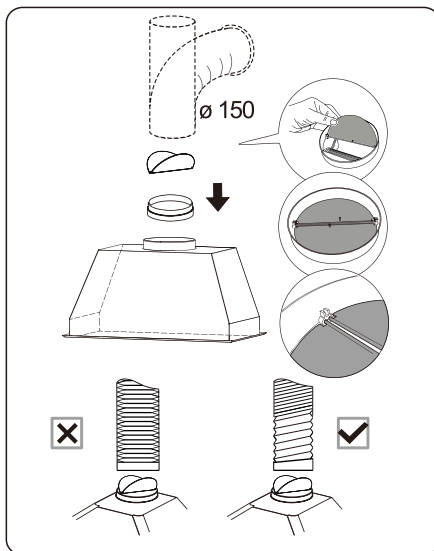
No open flames directly approach to the range hood.



Before installation, turn the unit off and unplug it from the outlet.

Note: The power cord is 43 in . It is not recommended that user replace the power cord or cut the power cord.

Air Outlet Installation Method



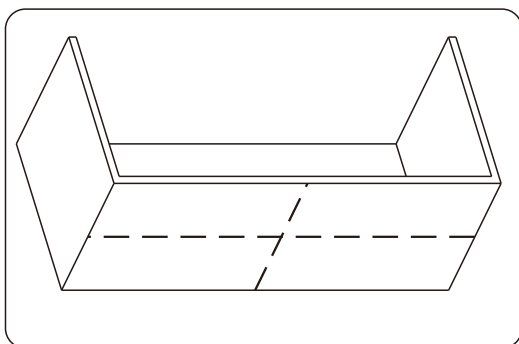
Installation method for 150mm diameter pipe: insert the one-way-valve as the pic and fix the pipe.

Attention: The bump of the one-way-valve must be upward.

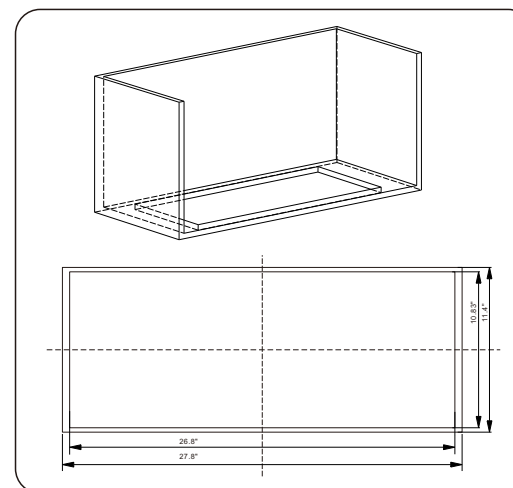
Installation

Note Please connect the power supply to test and confirm that the power is on before installing this Built-in or Insert range hood.

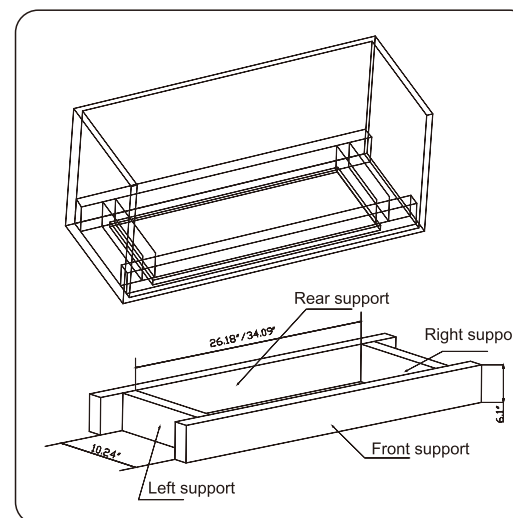
Refer to the installation instructions:



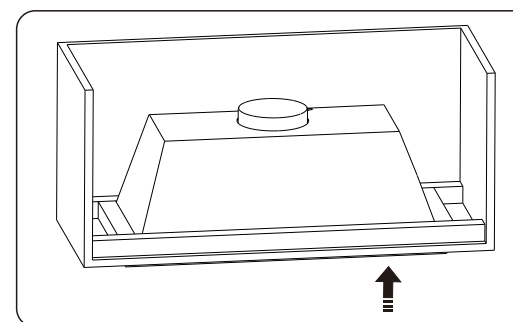
Determine and mark the horizontal line and perpendicular line on the base of the cabinet.



Cut out the opening where the insert will be installed.

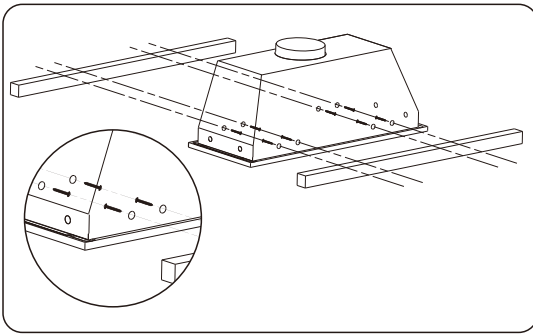


The hood has to be installed inside the cabinet. It should be installed a front and rear stud support. It would be better if there is space enough for installed the left and right support.

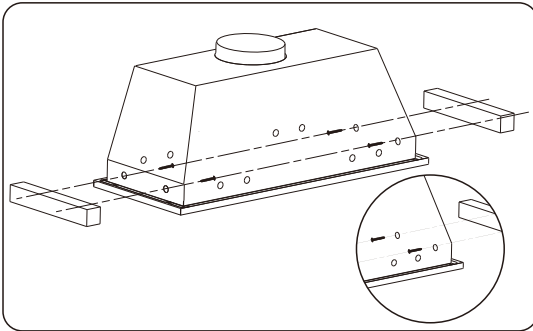


Determine and make all necessary cuts in the wall or ceiling for the ductwork.

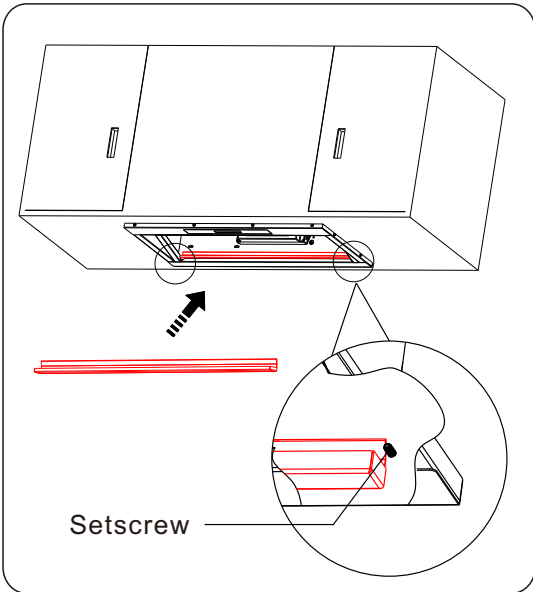
Note Install the duct work before installing the insert.



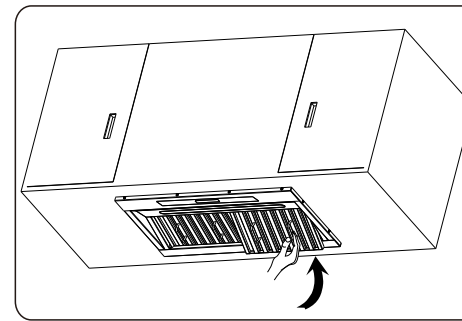
There are 8 holes on the front and rear surface of hood, and the range hood is fixed with 4X30 screws (8 holes)



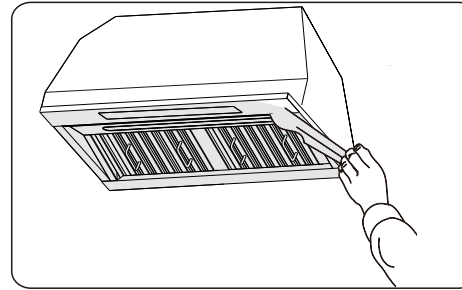
There are 4 holes on the left and right surface of hood, and the range hood is fixed with 4X30 screws (4 holes)



After the main unit installed, we need to install the internal oil cup as per pic shows. (PS: There are 2 setscrews on both side)



Install the both baffle filters.
Installation finished.



CAUTION:
BEFORE USE
Please remove the white/blue protective film on the range hood.

Operation

HOW TO USE YOUR RANGE HOOD

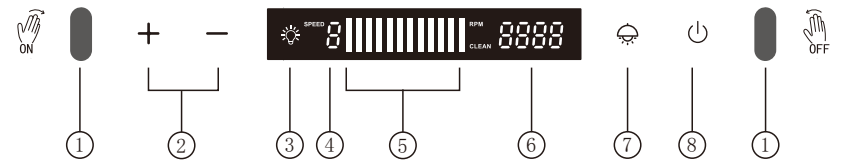







Figure 6


- ① Sensors of gesture switch.
- ② Press “+” or “-” to increase or decrease fan speed level to your desired setting. The fan speed level is 1~3.
- ③ Indicator light on.
- ④ The running fan speed levels
- ⑤ Indicator of running status. The LED lights turn on one by one from left to right, and then turn off one by one from left to right, and so on. The speed of LED lights on increases with the increase of fan speed level.
- ⑥ timer

Set the time: When range hood is in the off state, press  for 3 seconds, the light indicator will be on, the "+" and "-" buttons will flash, and the "hour" on the display screen will flash. Touch "+" and "-" to set the "hour" (12 hours system). Touch  to confirm and enter the "Minute" setting. Touch "+" and "-" to set the "Minute" (press for a long time to quickly adjust). After setting is completed, touch the  to confirm, or while no operating system will automatically confirm within 10 seconds.



- ⑦ Touch this button once to turn on the light and again to turn off the light
- ⑧ On/Off button: When range hood is off, touch this button, the range hood will enter the standby mode and screen display "0". In the standby mode, touch this button turn off the range hood and the display screen will display time.

Delay off function: This range hood has delayed off function.

Touch  in the power-on state, the indicators will flash, the delay time will be displayed (5 minutes by default), and the countdown will start. At this time touch  again to shut down the range hood directly. Range hood will be off after the countdown end.

Touch  for 3 seconds to end the delayed off process.

How to set delayed off time:

In the off state, touch  for 3 seconds, and the screen will display "5:00" and flash. At this time, touch the "+" and "-" button to set the delayed off time (1-60 minutes). Then touch  to confirm the setting or automatically save setting after 10 seconds of no operation.

How to control the range hood by gesture: You can change the fan speed levels or turn on/off range hood with gestures without touching it.

In the off mode, move use your hand from the left to the right to change the speed level from 1-3 in circularly. (Hand should be at a distance of 11 to 15cm from the front of the control panel)

In the running state, move your hand from the right to the left, and the unit starts to turn off after a delay of 3 minutes, and the display screen flashes with 3:00. The unit will turn off when the countdown time end. In the process of delayed off, move your hand from the right to the left again to directly turn off the unit.

CAUTION: To complete an effective control action, the hand must completely brush two gesture sensors at one time.

Maintenance

Before cleaning turn the unit off and pull out the plug.

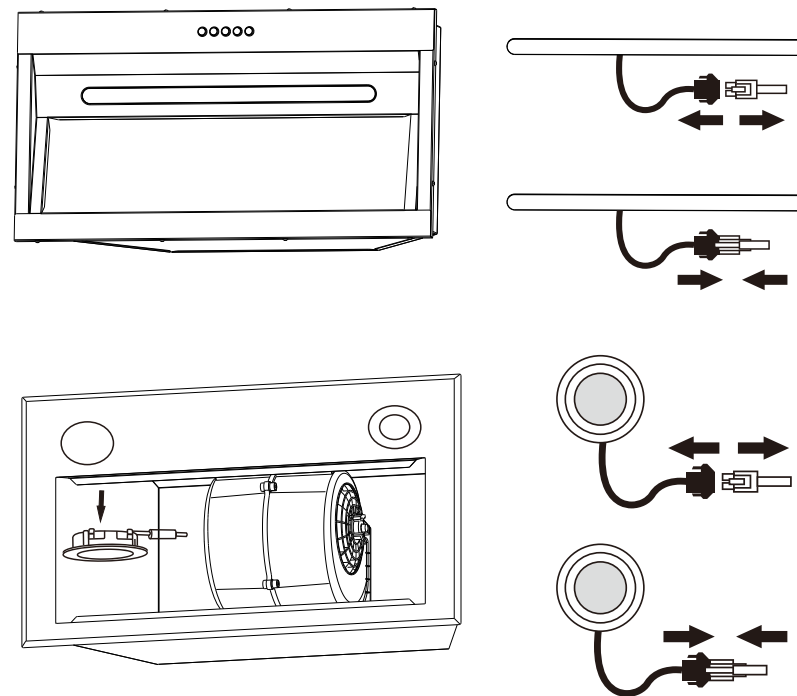
I. Regular Cleaning

Use a soft cloth moistened with hand-warm mildly soapy water or household cleaning detergent. Never use metal pads, chemical, abrasive material or stiff brush to clean the unit.

II. LED Light Replacement

Turn the unit off and unplug the appliance.

CAUTION: LAMP UNIT MAY BE HOT!
WAIT UNTIL THE UNIT IS COOL. BEFORE attempting to replace the LED lamps make sure the unit is powered off and UNPLUGGED.

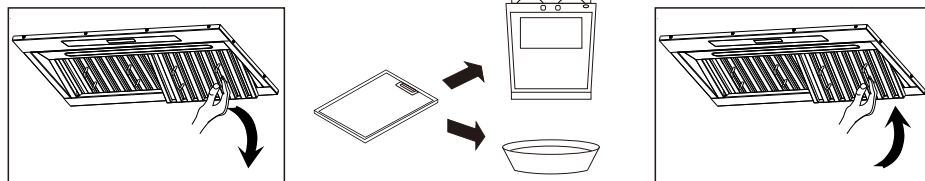


III. Filter replacement

Clean the filters once a month by hand or in a dishwasher (30 °C). Do not use any acid or corrosive detergents. Do not use any abrasive detergents! Do not use anyalkaline dishwasher-detergents! (pH more than 7). Do not put the filter in the dishwasher together with tableware. Filters which are blocked with food debris do not carry a guarantee. Dry the filters properly before you reinstall them.



1 MONTHS



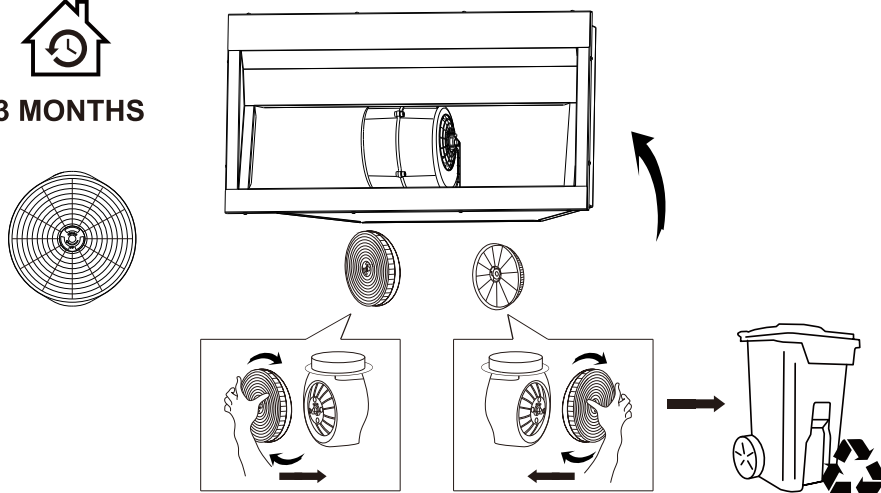
MAX.65 C

VI. Charcoal filters life time: Suggest changing to new one every 3 months (According to different kitchen condition, the life time of charcoal filters might be longer or shorter than 3 months).

Installation: Fix charcoal filters into the unit and turn it in as below picture shows. Repeat the same on the other side.



3 MONTHS



Important Notice:

1. Make sure the filter is securely locked. Otherwise, it would loosen and cause abnormal noise and danger.
2. Using charcoal filters would reduce the air flow of the range hood.

Trouble-Shooting

Problem	Posilble cause	Solution
Light on, but fan does not work	The fan blade is jammed.	Switch off the unit and repair by qualified service personnel only.
	The motor is damaged.	
Both light and fan do not work	Light is burnt out.	Replace the LED light with correct rating.
	Power cord is loose.	Plug into the power supply again.
Serious Vibration of the unit	The fan blade is damaged.	Switch off the unit and repair by qualified service personnel only.
	The fan motor is not fixed tightly.	
	The unit is not hung properly on the bracket.	Take down the unit and check whether the bracket is in proper location.
Suction performance not good	Too far distance between the unit and the cooktop.	Readjust the distance between 25.6"-30".

Environmental Protection

1. While unpacking, the packaging materials (polythene bags, polystyrene pieces, etc.) should be kept away from children. CHOKING HAZARD!
2. Old and unused appliances must be sent for disposal to the responsible recycling centre. Never expose to open flames.
3. Before you dispose of an old appliance, render it inoperative. Unplug the appliance and cut off the entire power cord. Dispose of the power cord and the plug immediately.
4. Dispose of any paper and cardboard into the corresponding containers.
5. Dispose of any plastics into the corresponding containers.
6. If suitable containers are not available at your residential area, dispose of these materials at a suitable municipal collection point for waste-recycling.
7. Receive more detailed information from your retailer or your municipal facilities.



Materials marked with this symbol are recyclable.
Please contact your local authorities to receive further information.