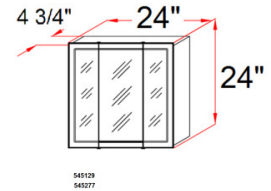
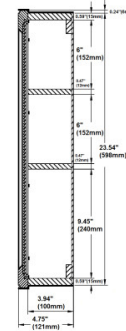
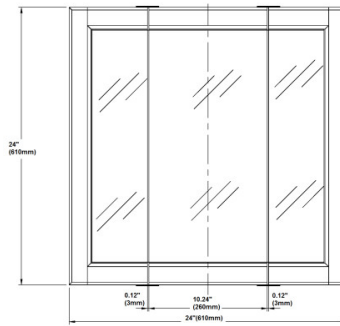


Tri-View Medicine Cabinet Mirror 24"

MISC CABINETS

Honey Oak



SPECIFICATIONS

MATERIAL CONSTRUCTION:	Wood	FACE FRAME MATERIAL:	Oak
ASSEMBLY REQUIRED:	No	SIDES MATERIAL:	MDF
TOOLS NEEDED FOR INSTALLATION:	Electric Drill, Screwdriver	BOTTOM MATERIAL:	Particle Board
ASSEMBLED DIMENSIONS:	24" H x 24" L x 4.75" D	BACK PANEL MATERIAL:	MDF
WEIGHT:	23.19 lbs.	BACK BRACE MATERIAL:	Particle Board
NUMBER OF DOORS:	3	GLASS STYLE:	Flat Panel
DOOR MATERIAL:	MDF	LIGHTED:	No
NUMBER OF SHELVES:	2	QTY OF LAMPS:	N/A
ADJUSTABLE SHELVES:	No	POWER SOURCE:	None
SHELF MAX WEIGHT CAPACITY:	10 lbs.	MOUNTING HARDWARE INCLUDED:	No
SHELF WIDTH:	20.87"	MOUNTING TYPE:	Surface
SHELF THICKNESS:	0.47"		
SHELF MATERIAL:	Particle Board		

WARRANTY: 1-Year limited warranty
CARB COMPLIANT: CARB Phase 2
TSCA TITLE IV COMPLIANT: Yes



TYPE:
JOB:
ORDER CODE:
APPROVALS: