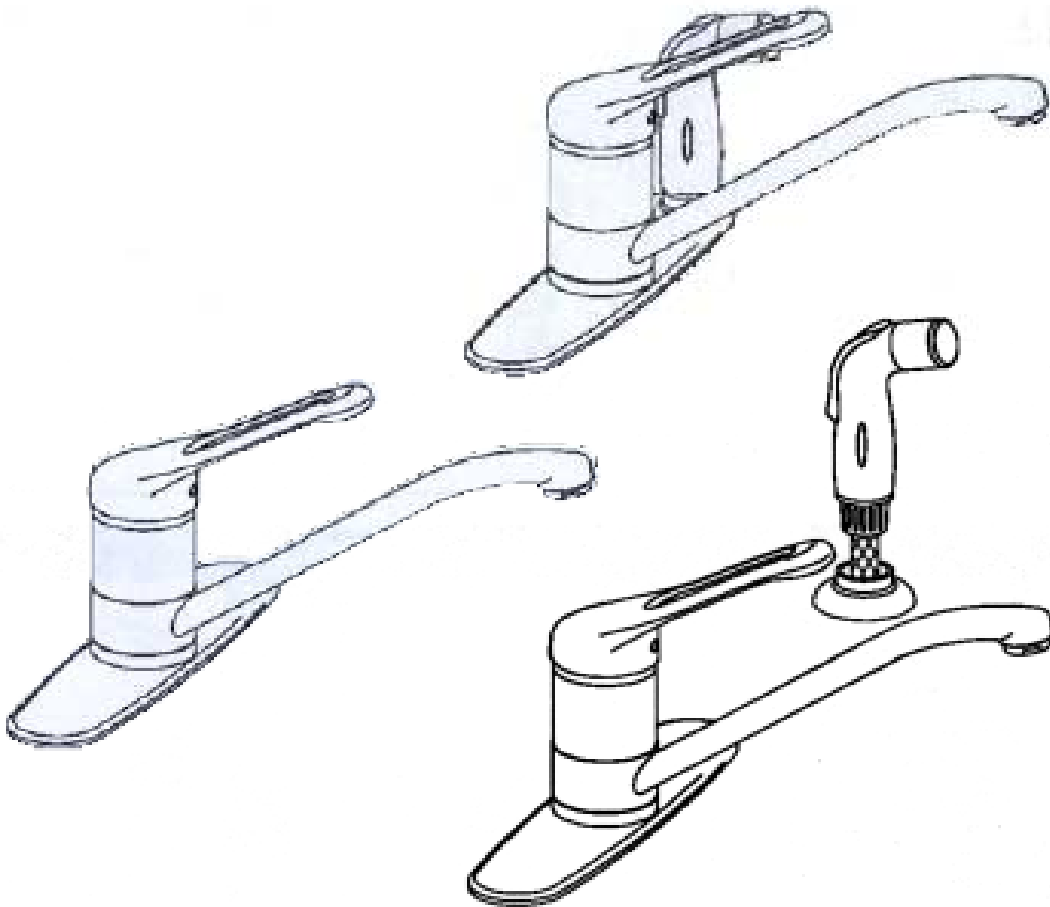


INSTRUCTIONS FOR INSTALLATIONS
MODELS GI-574 23-574



LATOSCANA
by Painsi

GB GENERAL REQUIREMENTS:

Water Supply	Recommended	Max.	Min.
Hot Water Temperature	150F (-65°C)	175F (-80°C)	60F (-15°C)
Working Pressure	45psi (-3 bar)	75psi (-5bar)	7 psi (-0.5 bar)

In case of working pressure higher than 75 psi (5 Bar) it is advisable to install a pressure reducer. This set is not compatible for use with automatic low-pressure water heaters. Before proceeding with the assembly it is advisable to purge the hot and cold water piping to prevent accumulation of dirt and residues which could cause malfunctioning of the mixer.

IMPORTANT: the hot water must be connected to the pipe on the left and the cold water to the pipe on the right.

INSTALLATION:

FIG. 1: Connect the supply pipes -1- to the base of the mixer.

FIG. 2: If the sink has three holes use the 8" plate with or without the hole for the douche.

FIG. 3: Insert the mixer into the hole of the sink after placing the o-ring -2- into the special seat.

FIG. 4: Fit on the threaded shank -3- the gasket -4-, the flange -5-, then block the mixer in position with the screw nut -6-.

FIG. 5: If the mixer has a deviation device with lateral douche continue the installation by inserting the douche support -8- and blocking it into position with the lock-nut -9-, then insert the flexible tube for the douche. If using the two-hole plate do not use the 8.1 washer.

FIG.6: Connect the douche -10- to the flexible pipe -7-. Connect the flexible pipe to the threaded shank -3- after inserting the gasket -11-.

Test the functioning of the mixer: when turning the water on, the jet flows from the spout/aerator; press the push-button to deviate the flow back to the spout; press on the rear of the push-button to return the flow to the original position.

Test the functioning of the mixer: when turning the water on the jet flows from the spout/aerator; press on the front side of the push-button to deviate the flow back to the aerator; press on the rear of the push-button to return the flow to the original position.

MAINTENANCE

FIG. 7: REPLACEMENT OF THE CARTRIDGE OR DEVIATION DEVICE

If it becomes necessary to replace the cartridge or the deviation device remove the plate -12- unscrew the grub screw -13- and remove the lever -14-. Unscrew the cap -14- and the lock nut -16-. Remove the cartridge -17-. Lift out the deviation device -18- located on the base of the cartridge seat. Proceed in reverse to reassemble the whole unit making sure to clean the surface in which the cartridge washers are to be inserted.

FIG.8: It's a good idea to periodically clean the aerator/spout to avoid accumulation of dirt and residues which could in time reduce the flow capacity. To disassemble the aerator unscrew the gasket -21- and clean the filter -20- of all residues. To reassemble it proceed in reverse making sure to correctly insert the washer -19-. Clean the mixer only with water and a soft cloth. It is absolutely NOT advisable to use solid or liquid detergents, or in any case soaps of any kind because they could damage the treated surfaces.

FIG. 9: Unscrew the base washer -27- remove the o-ring -26- the antifriction ring -25- pull out the spout -24- and the antifriction ring -23- **WARNING:** the "GACO" rim gaskets -22- are very delicate and therefore it's best not to try to remove them except to replace them completely. Just clean them and possibly add a slight layer of lubricant. To assemble the unit proceed in reverse making sure to place all the parts as indicated in the picture. Finally, before assembling it on the sink mixer, make sure the spout can rotate easily in all directions.

F CONDITIONS GÉNÉRALES POUR L'UTILISATION:

Alimentation	Recommandée	Maximale	Minimale
temperature eau chaude	150F (-65°C)	175F (-80°C)	60F (-15°C)
Pression d'écoulement	45psi (-3 bar)	75psi (-5bar)	7 psi (-0.5 bar)

En cas de pressions d'écoulement supérieures à 75 psi (5 BAR) il est conseillé d'installer un réducteur de pression. Cette robinetterie n'est pas compatible avec l'emploi de chauffe-bains instantanés à basse pression. Avant le monta-

MODELS GI-574 AND 23-574

Fig. 1

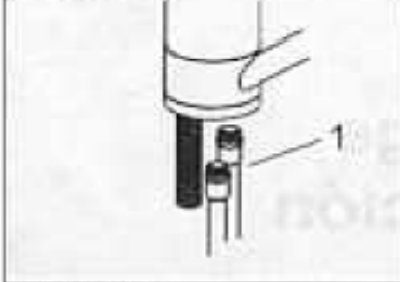


Fig. 2

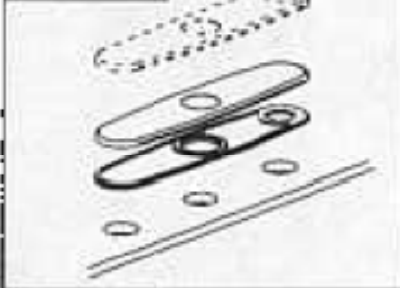


Fig. 3

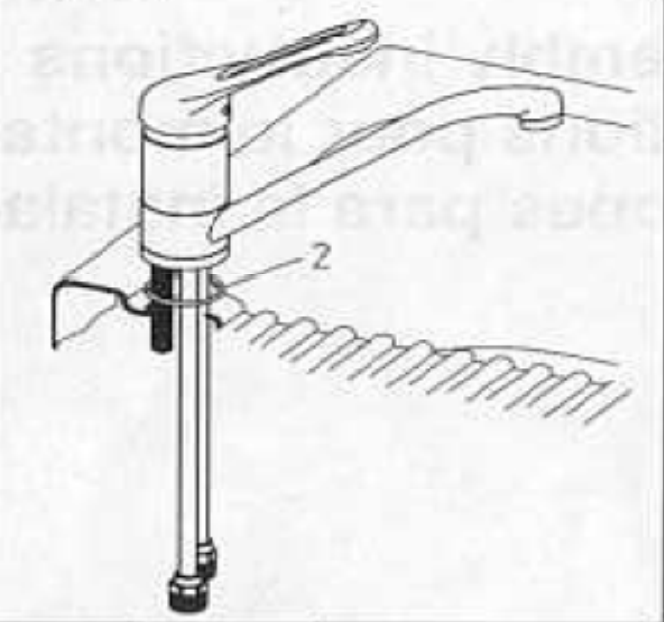


Fig. 4

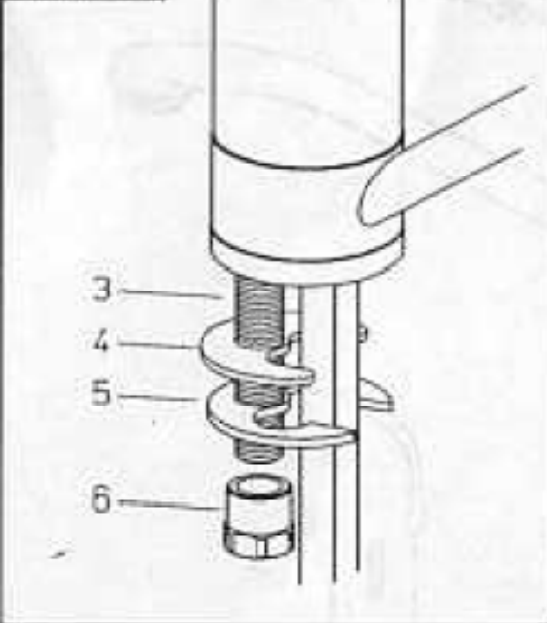
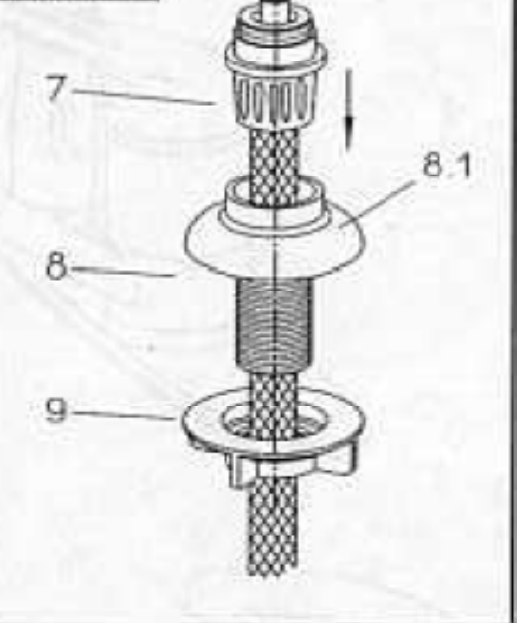
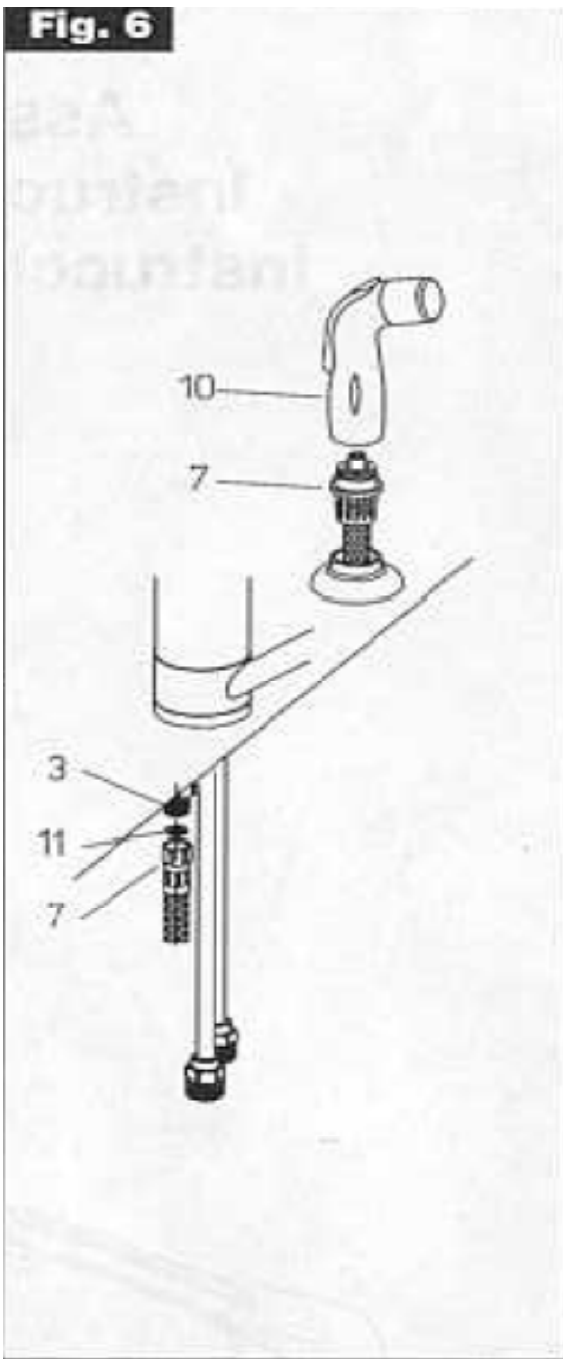


Fig. 5



MODELS GI-574 AND 23-574



MODELS GI-574 AND 23-574

MAINTENANCE - MAINTENANCE - MANUTENCIÓN

Fig. 7

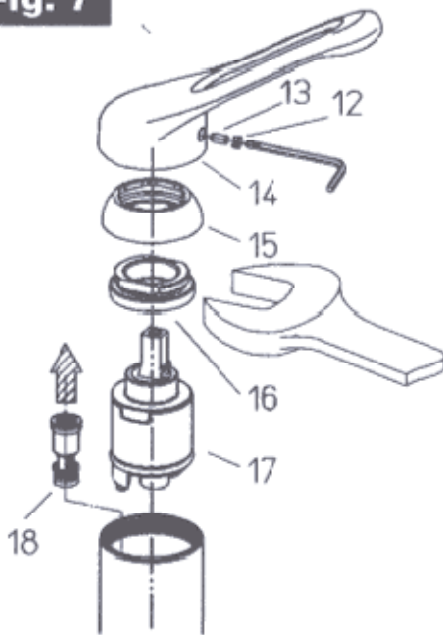


Fig. 8

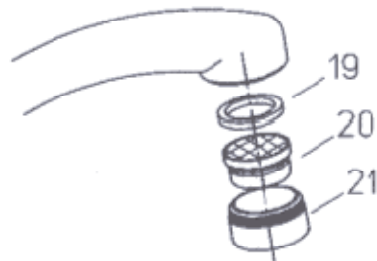
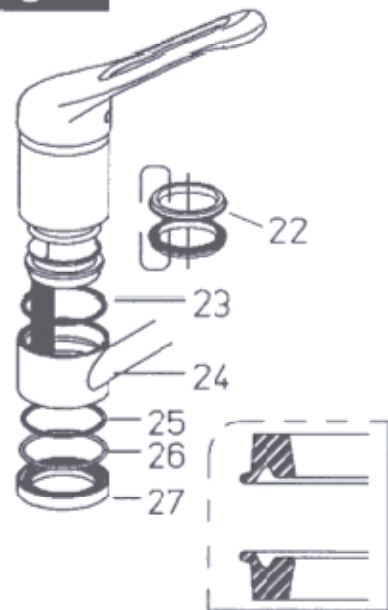


Fig. 9



MODELS GI-574 AND 23-574