








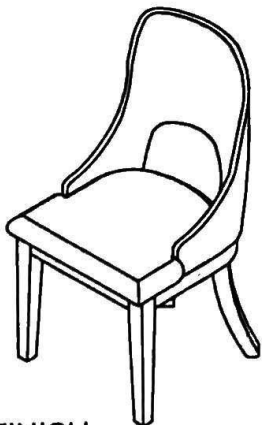
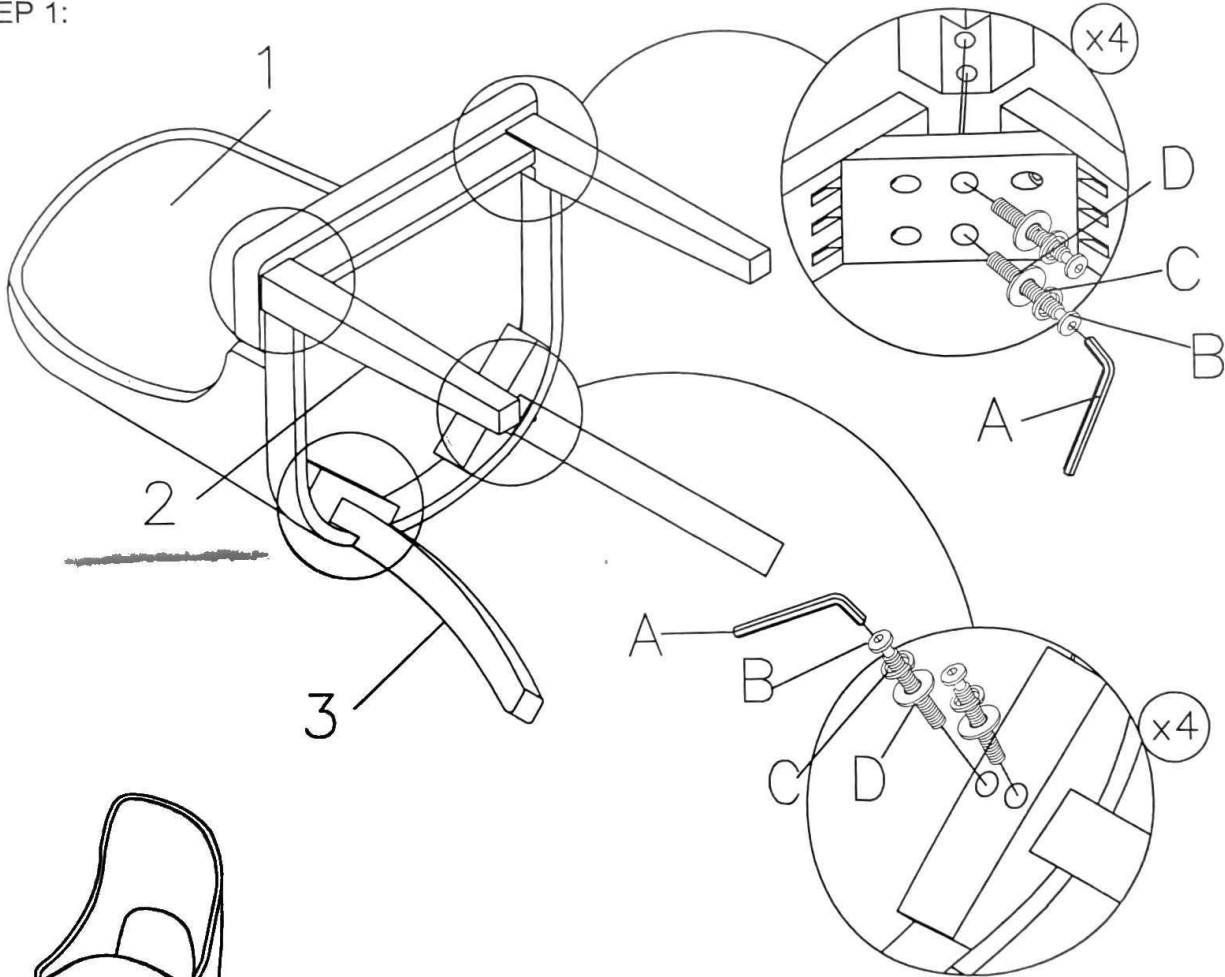
# Assembly Instructions

## ITEM NO.:11030

Thank you for purchasing this quality product. Be sure to check all packing material carefully for small parts that may have come loose inside the carton during shipment. (Note: Loosely thread all screws/bolts first. Once the item is assembled then completely tighten.)

PARTS LIST:				HARDWARE LIST:				
No.	Description	Sketch	Quantity	No.	Sketch	Description	Size	Quantity
1	Back frame assembly		1 pc	A		Allen Wrench	4*60mm	1 PC
				B		Bolt	φ6**50mm	8 PCS
				C		Lock Washer	φ6*13mm	8 PCS
				D		Flat Washer	φ6*19mm	8 PCS
2	Front Legs		2 pcs					
3	Back Legs		2 pcs					

### STEP 1:



**FINISH**