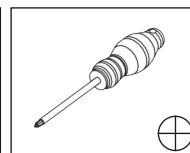
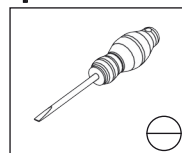
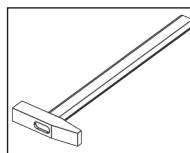
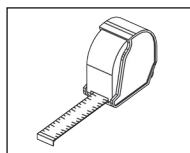


Tools required:



- Proper assembly of this item requires **2 people**.
- Do not throw away packaging materials until assembly is complete.
- Assemble this item on a **soft surface**, such as cardboard, towel, carpet. It should-protect finish.
- Keep plastic packages and other parts **away from children and infants**.
- All connections should be tight.
- Until starting assembling please read whole instruction.
- If You notice that the package is damaged don't assembly.



Parts in the packaging

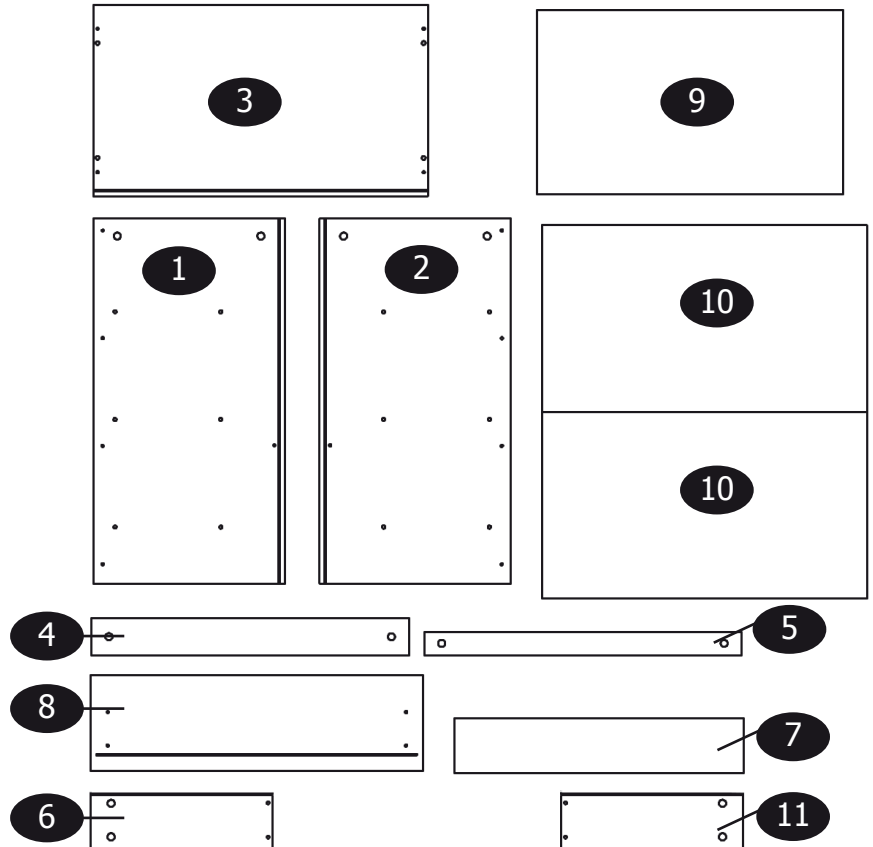
- Before starting work please make sure You have all the parts.

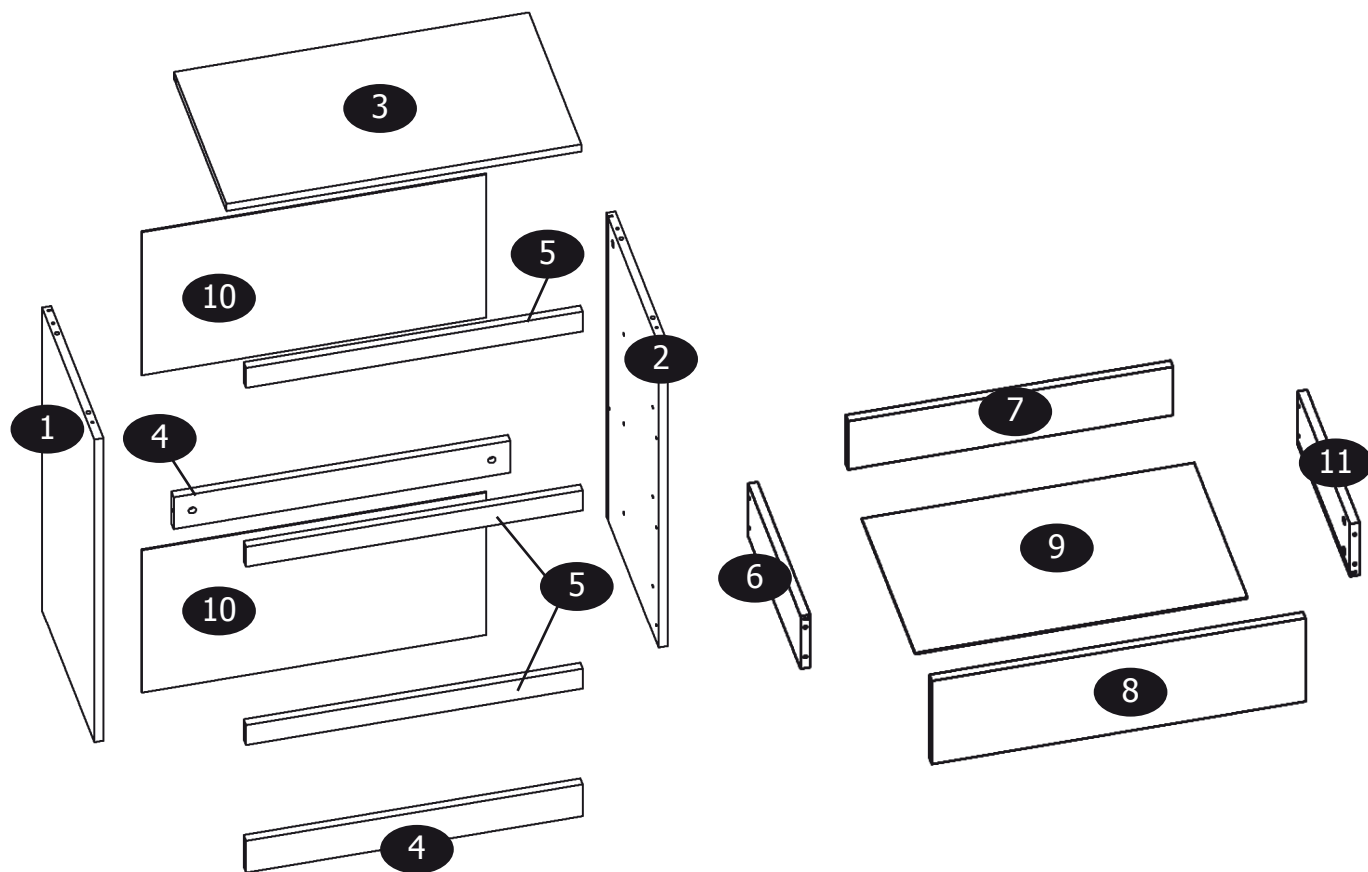


K1 1 x	F2 12 x	S1 24 x
J1 3 x	E1 16 x	T1 4 x
M3 20 x	N1 20 x	Z1 30 x

Other elements

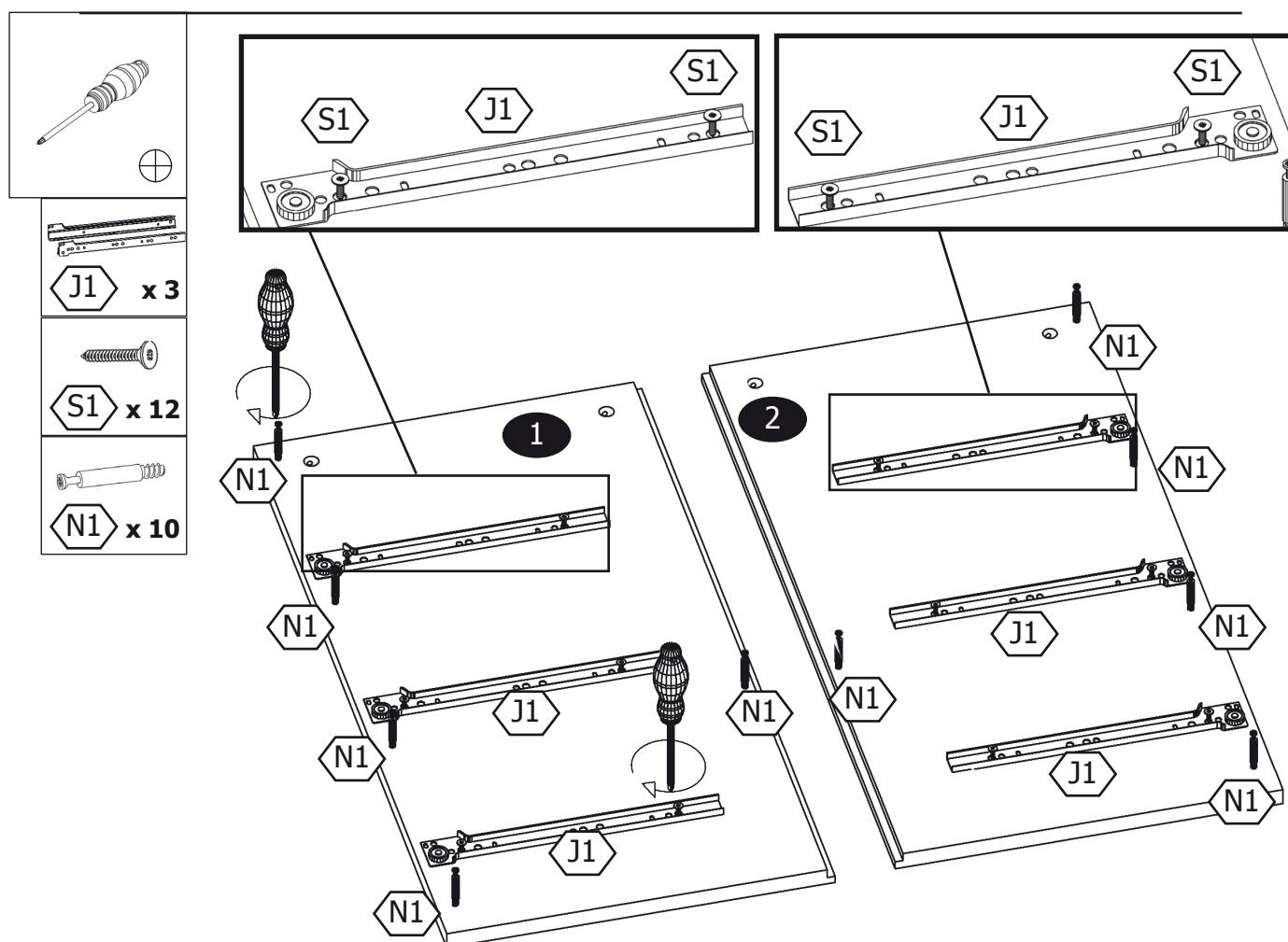
- 1 x 1
- 2 x 1
- 3 x 1
- 4 x 2
- 5 x 3
- 6 x 3
- 7 x 3
- 8 x 3
- 9 x 3
- 10 x 2
- 11 x 3



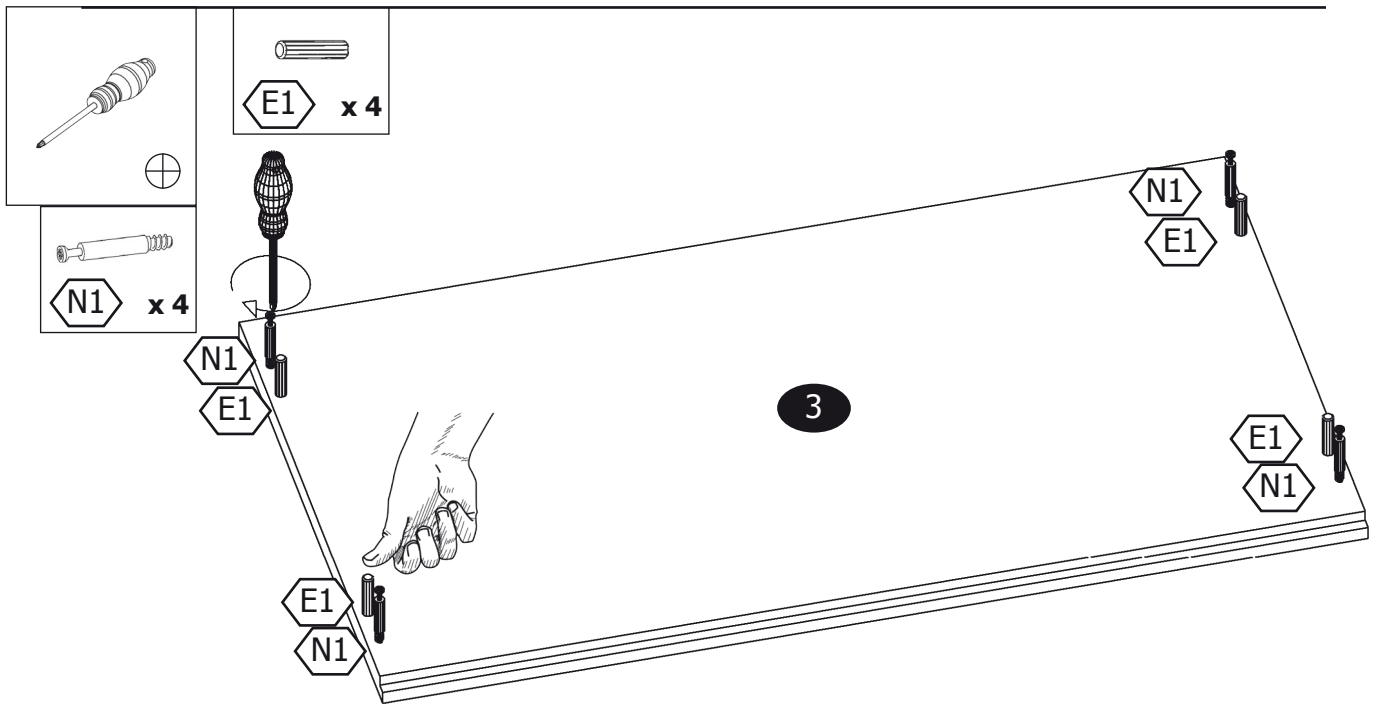


ASSEMBLY

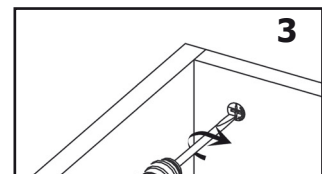
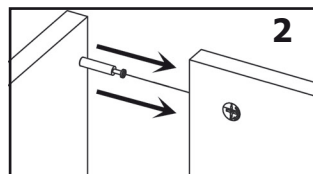
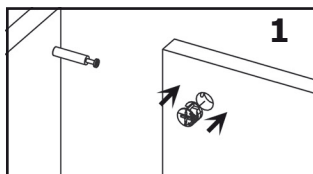
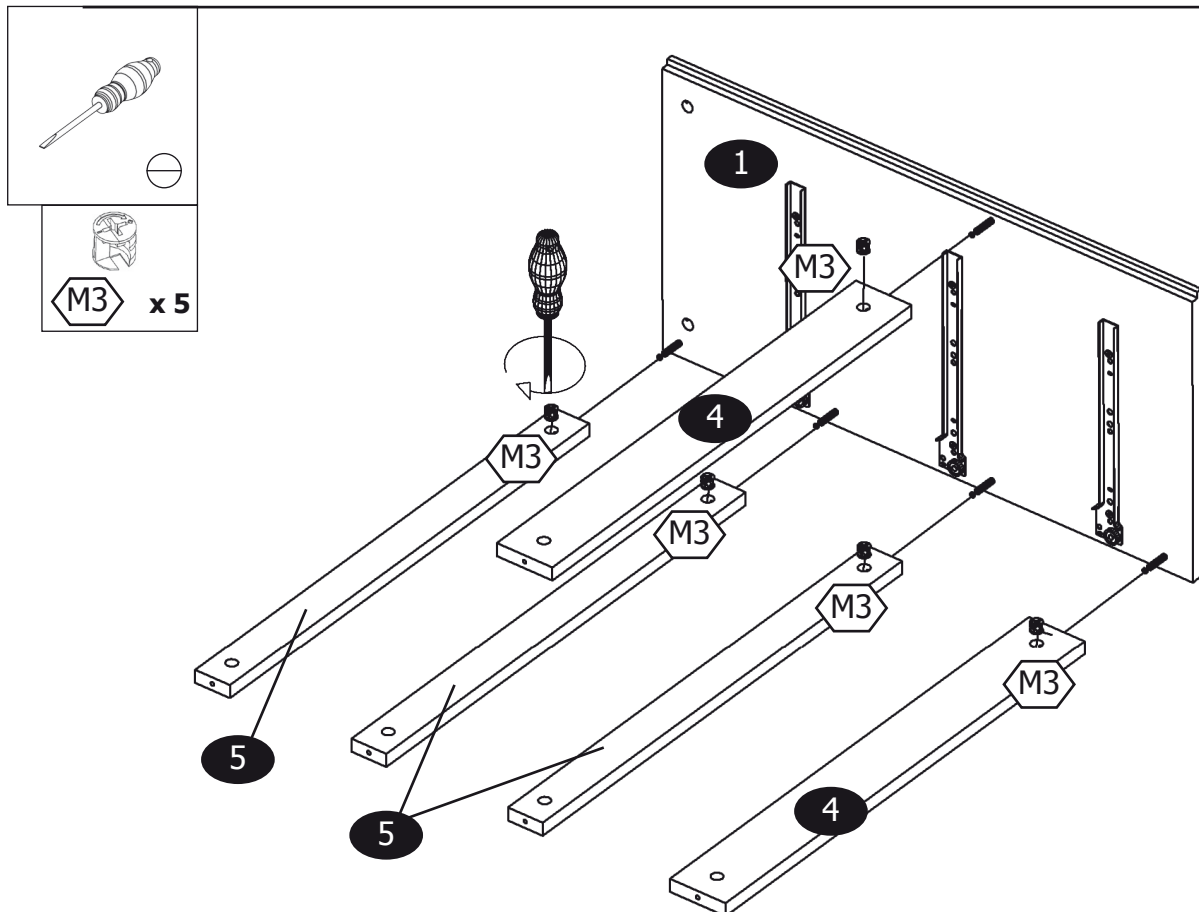
1



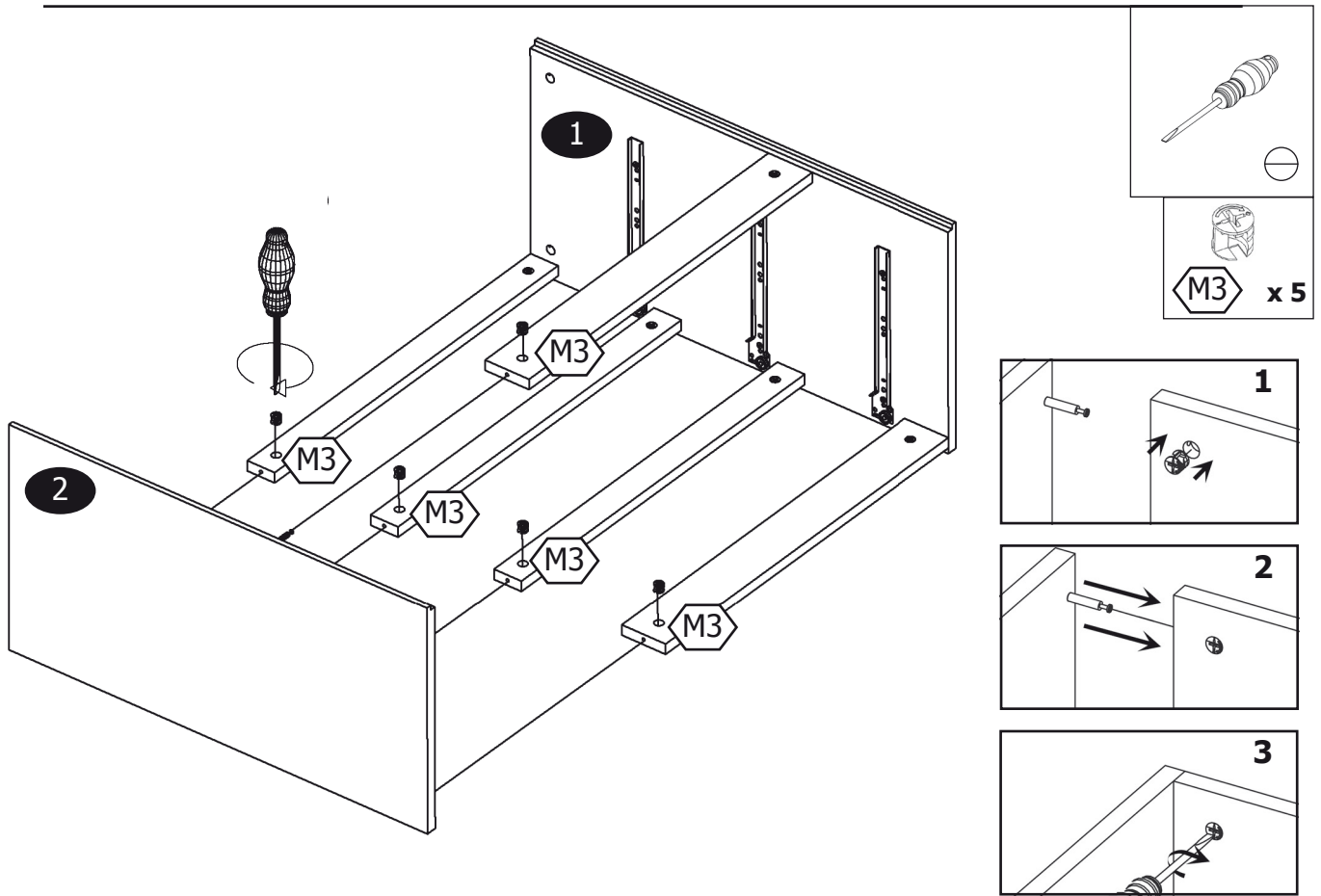
2



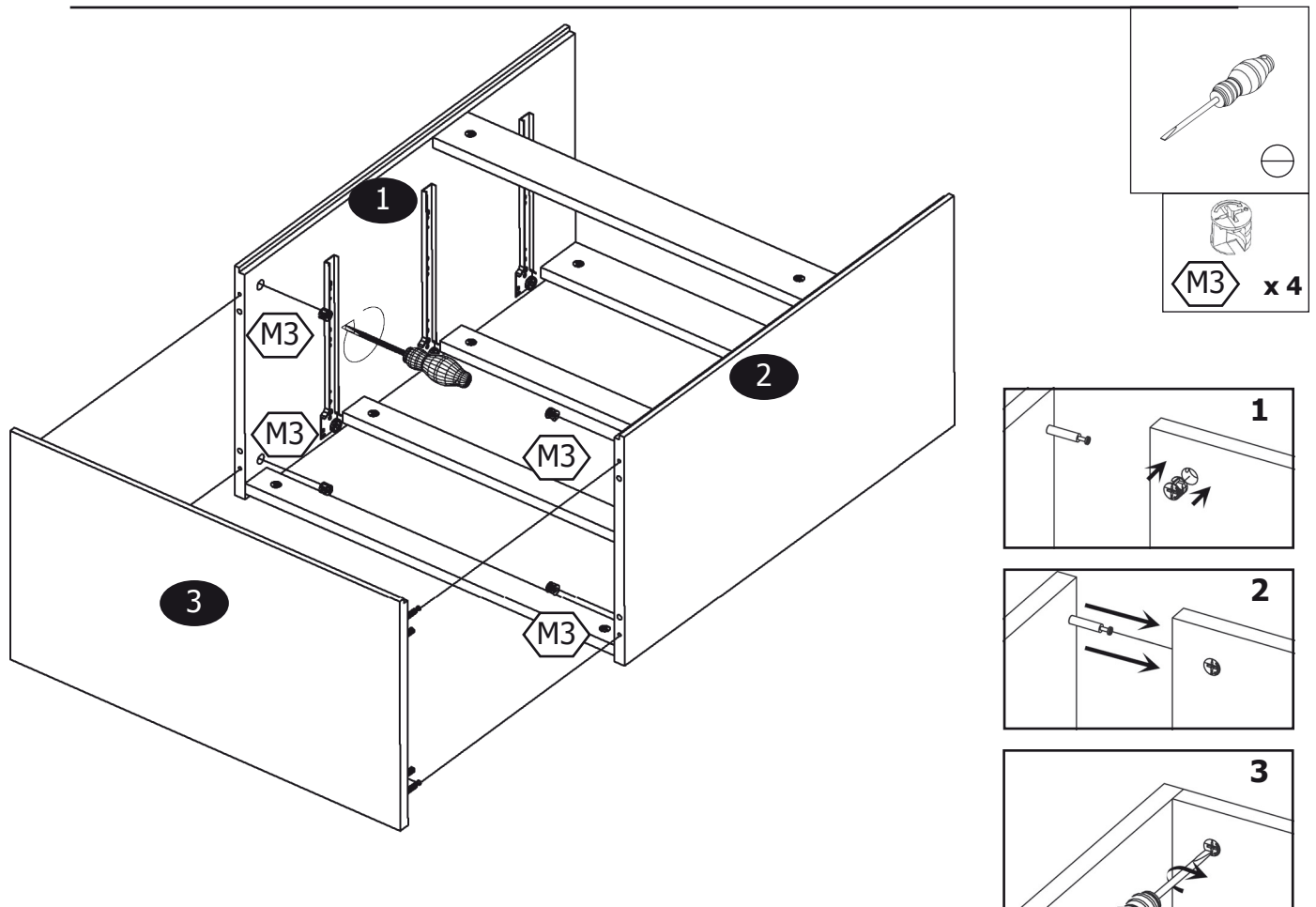
3



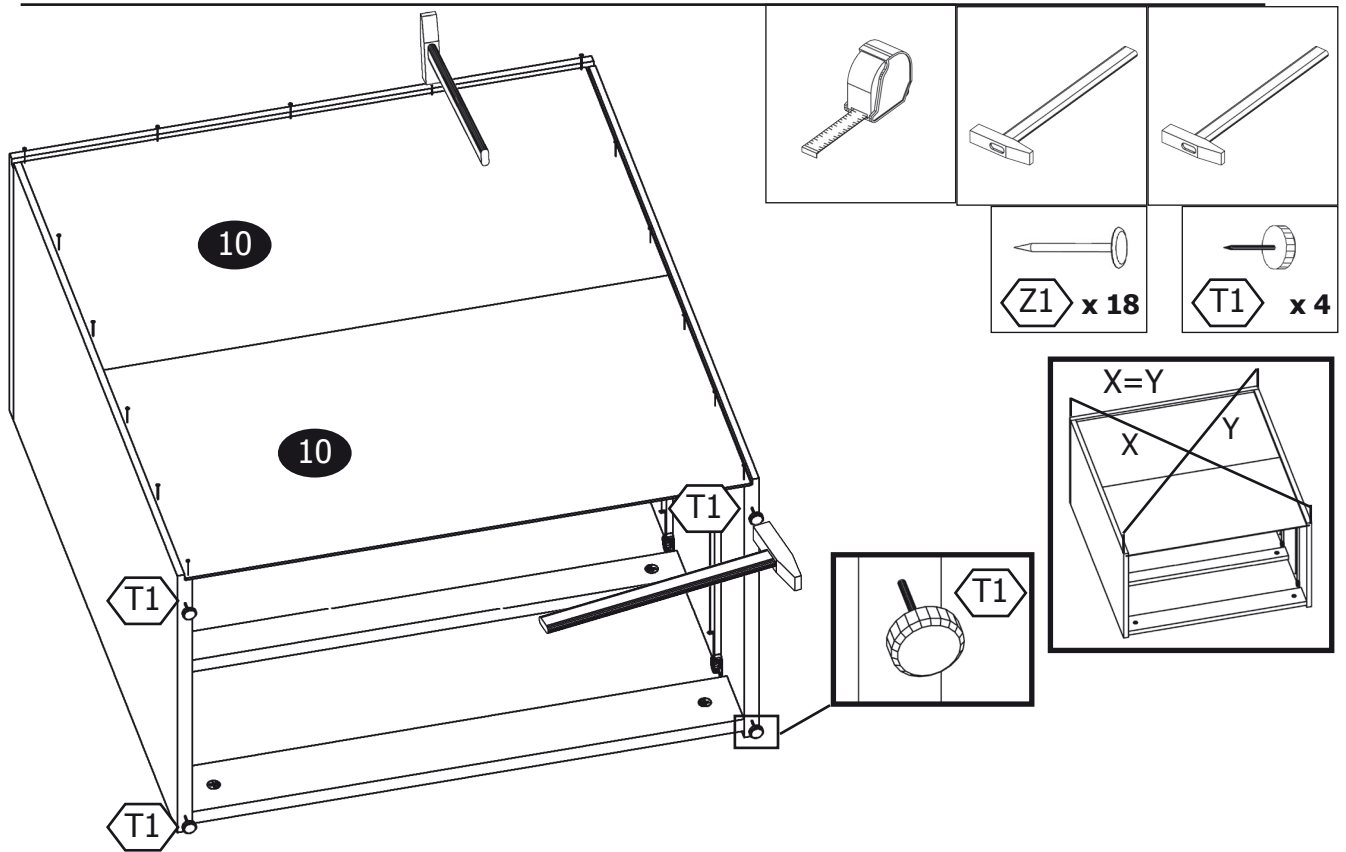
4



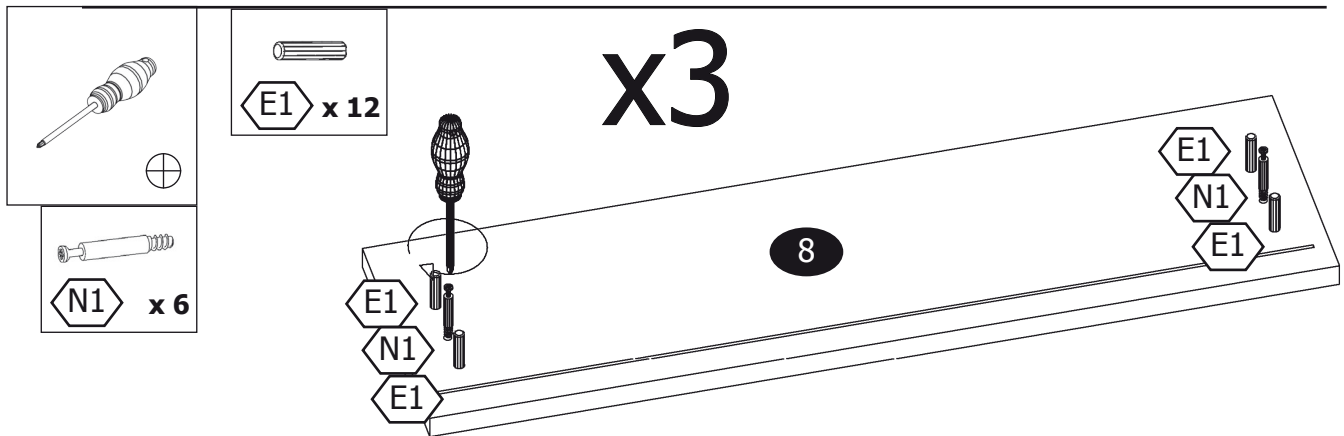
5



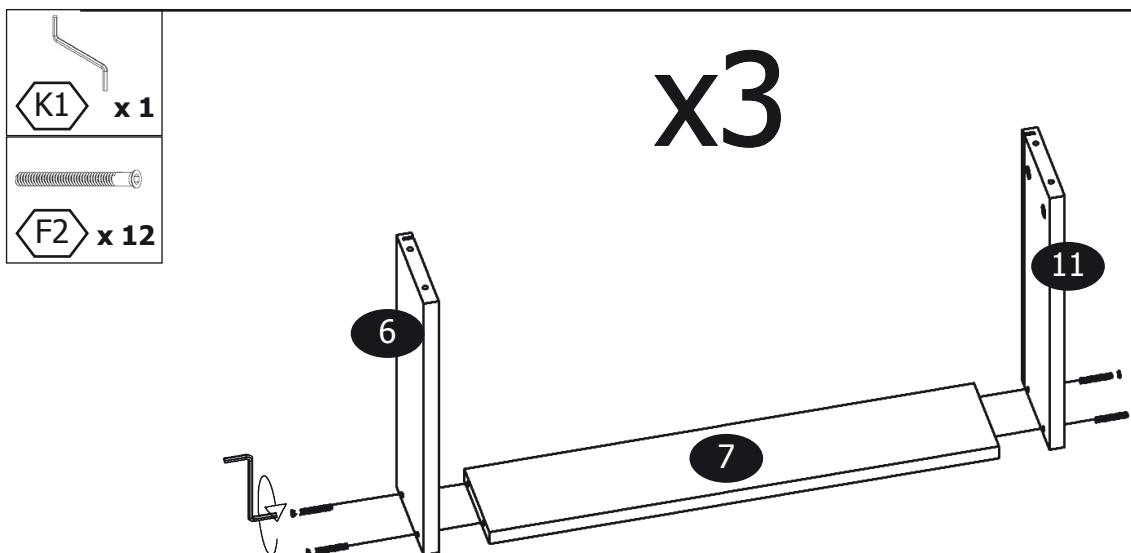
6



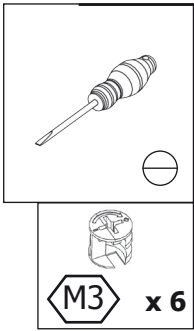
7



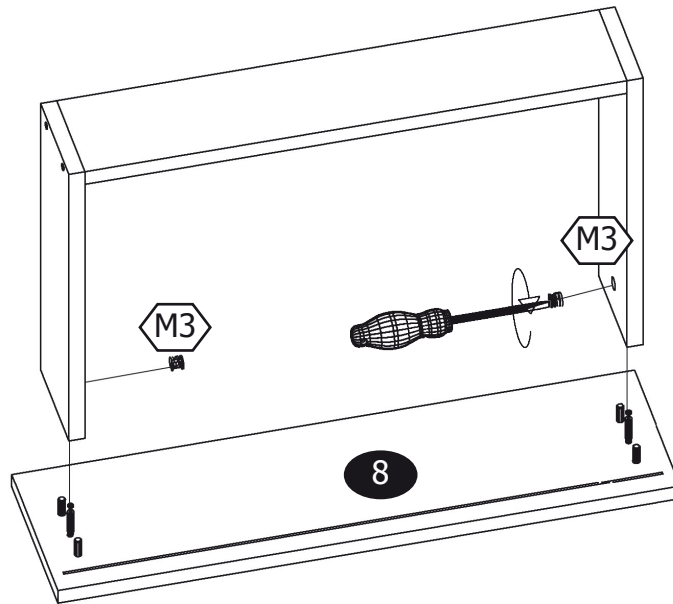
8



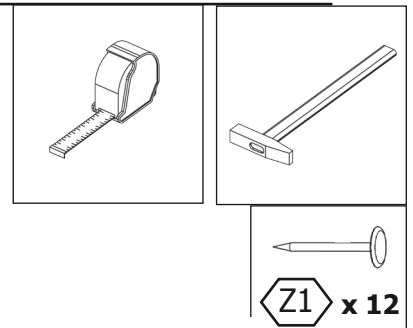
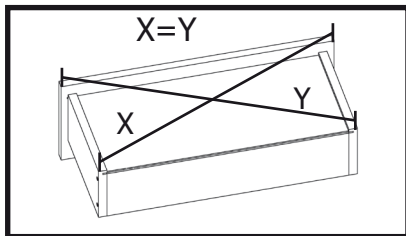
9



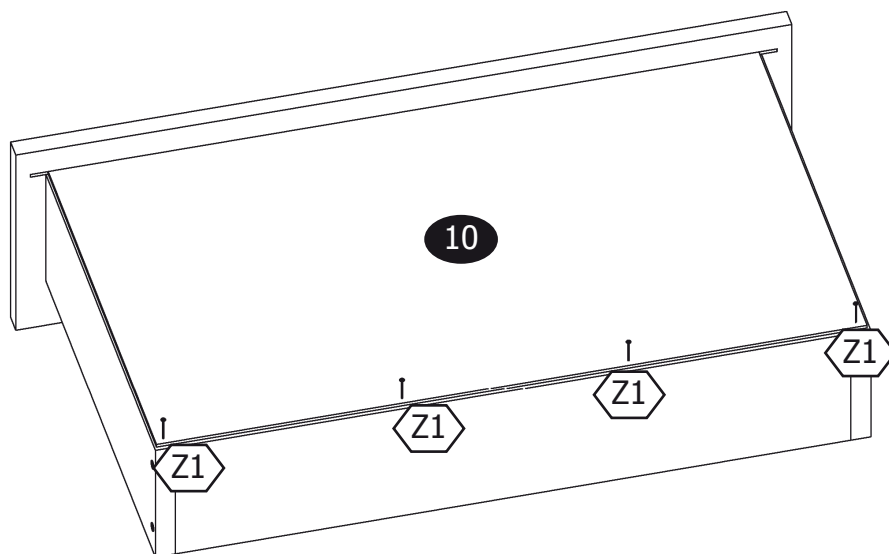
x3



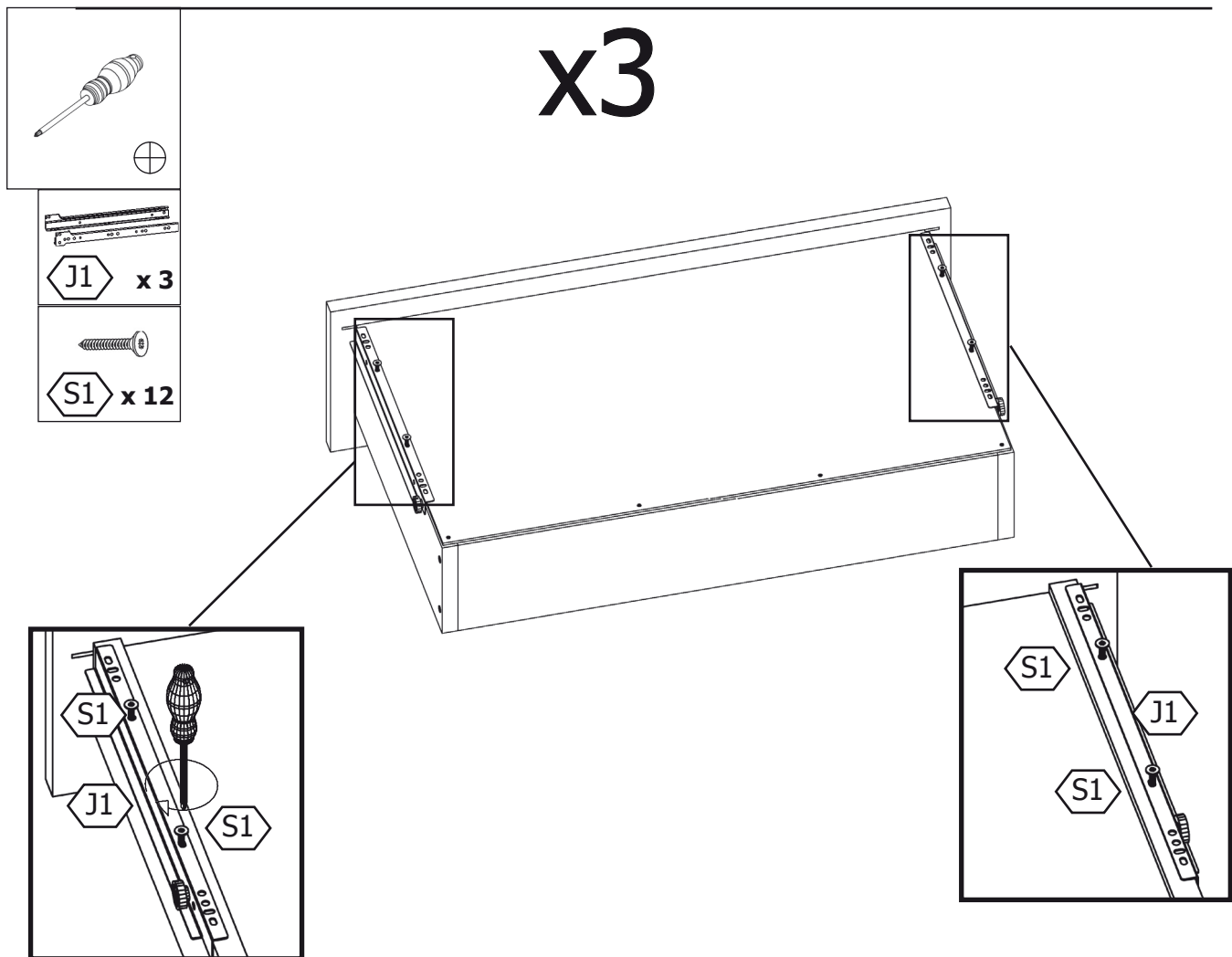
10



x3



11



12

